

2014 Montana Agricultural Outlook

George Haynes

**Department of Agricultural Economic & Economics
MSU Extension**

**Data Source: National Agricultural Statistics Service
Montana Field Office**



MONTANA
STATE UNIVERSITY

EXTENSION

Mountains & Minds

2013 “80% Recap”

■ Crops

- All wheat & barley prices – down 15% or more
- All wheat production
 - Winter wheat production – down 3%
 - Spring wheat production – up 9%
 - Barley production – up 7%
- Sugar Beets – good yield, low sugar, low price

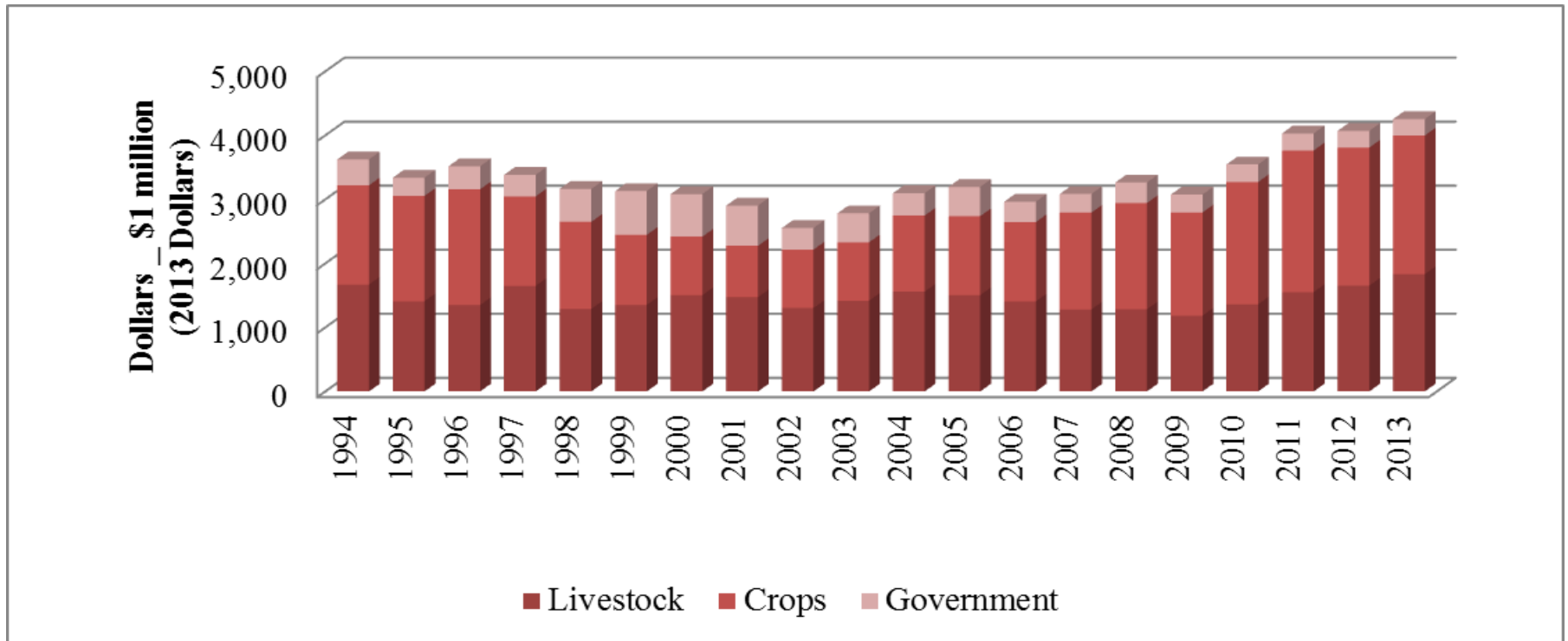
■ Cattle

- Cattle and Calf Prices – strong
 - Cow/calf producers are in the *right place*
- Cow Herd – stable (to slight increase)



Montana

Gross Revenue Estimates



7% increase from 2012 – US net farm income up by 6%

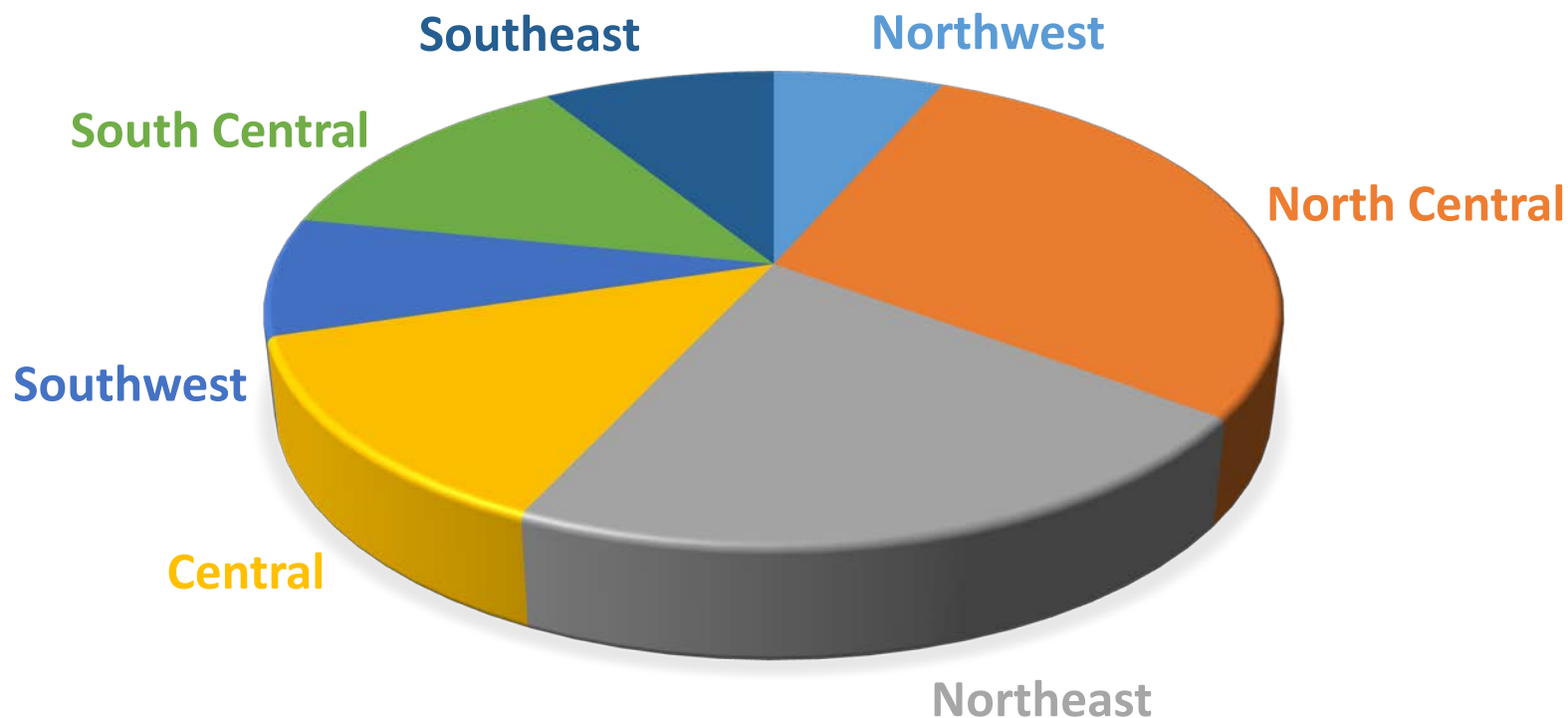


MONTANA
STATE UNIVERSITY

EXTENSION

Mountains & Minds

Share of Gross Revenue by Region



Northwest – 6%, Central – 13%, North Central – 29%; 2010 estimates

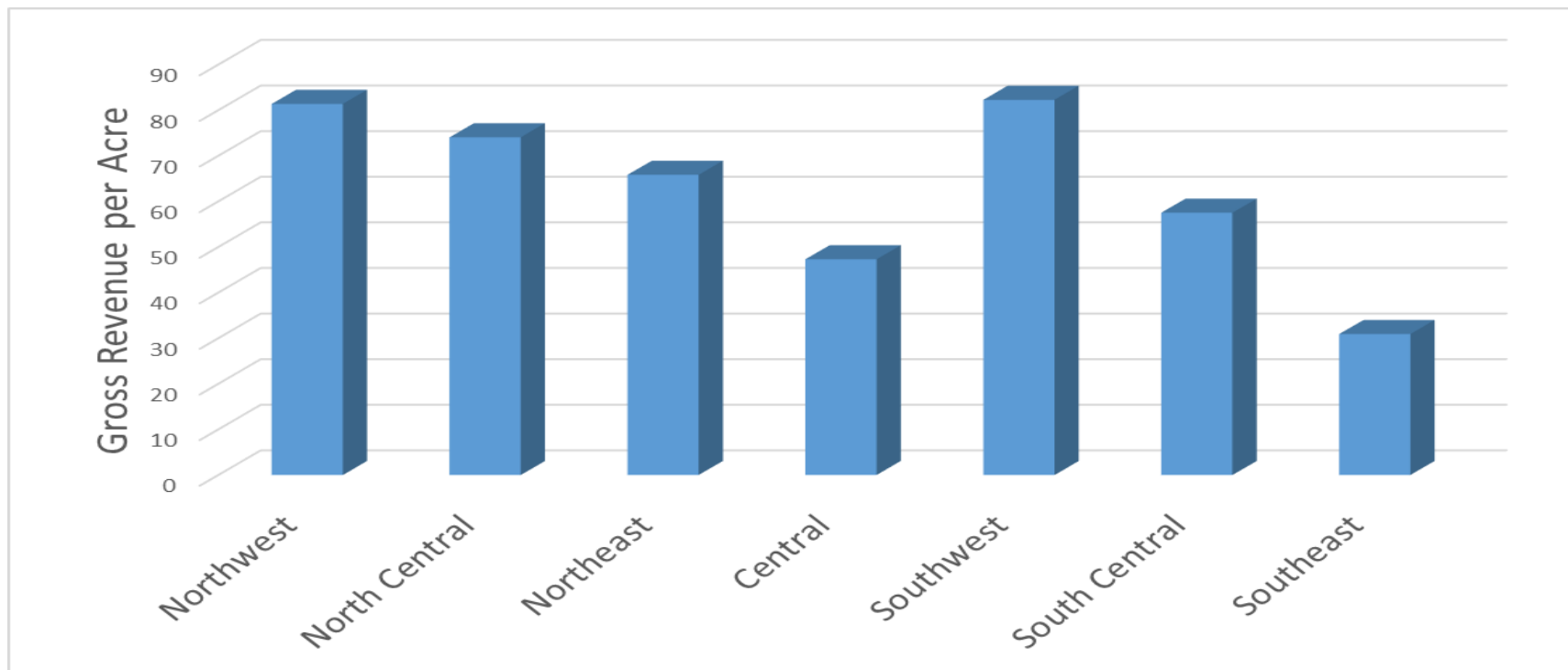


MONTANA
STATE UNIVERSITY

EXTENSION

Mountains & Minds

Gross Revenue per Acre by Region



Northwest - - 2nd highest gross revenue/acre in Montana (\$81/ac.) Flathead - \$186/ac.; 2010 estimates



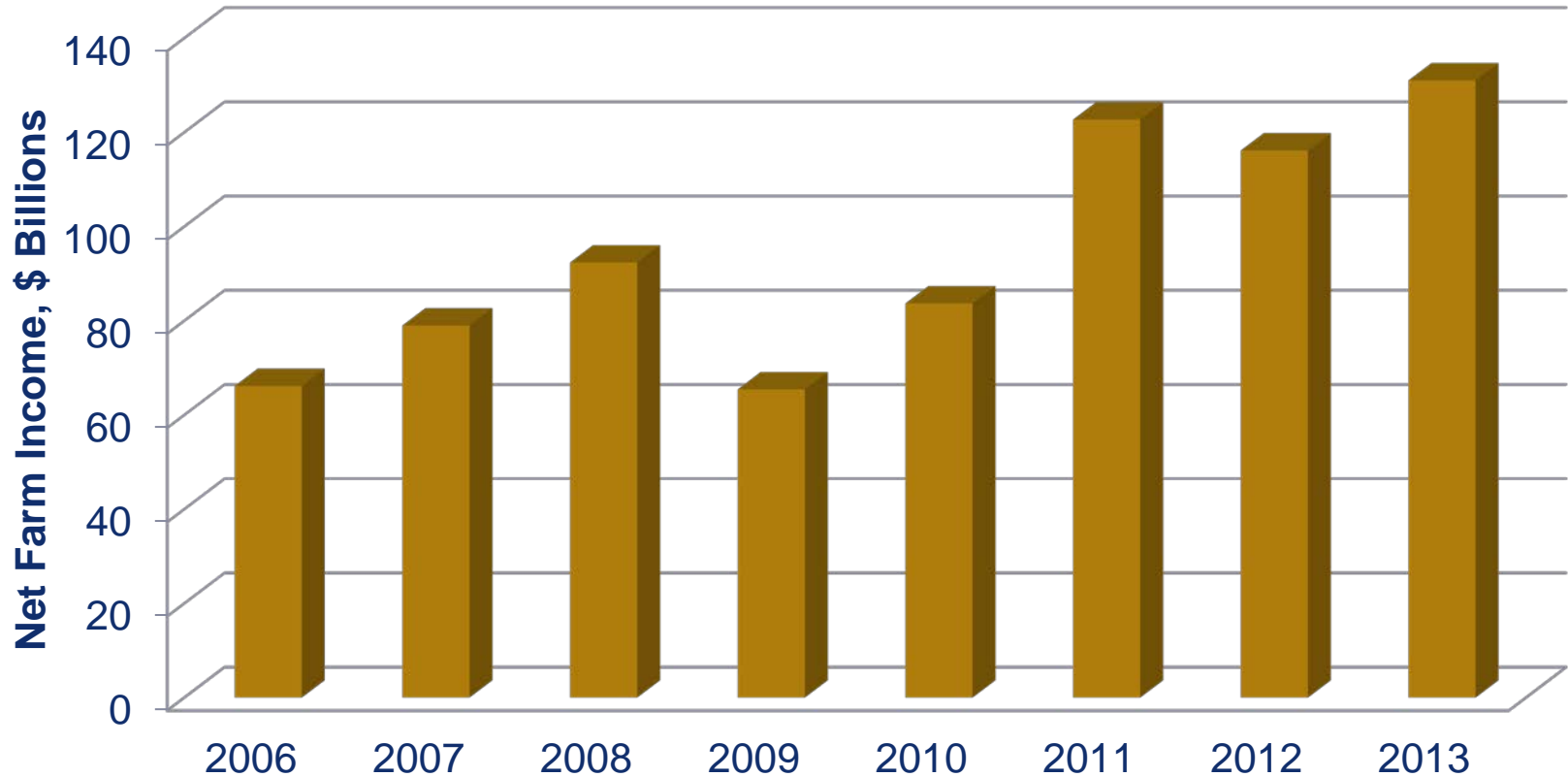
MONTANA
STATE UNIVERSITY

EXTENSION

Mountains & Minds

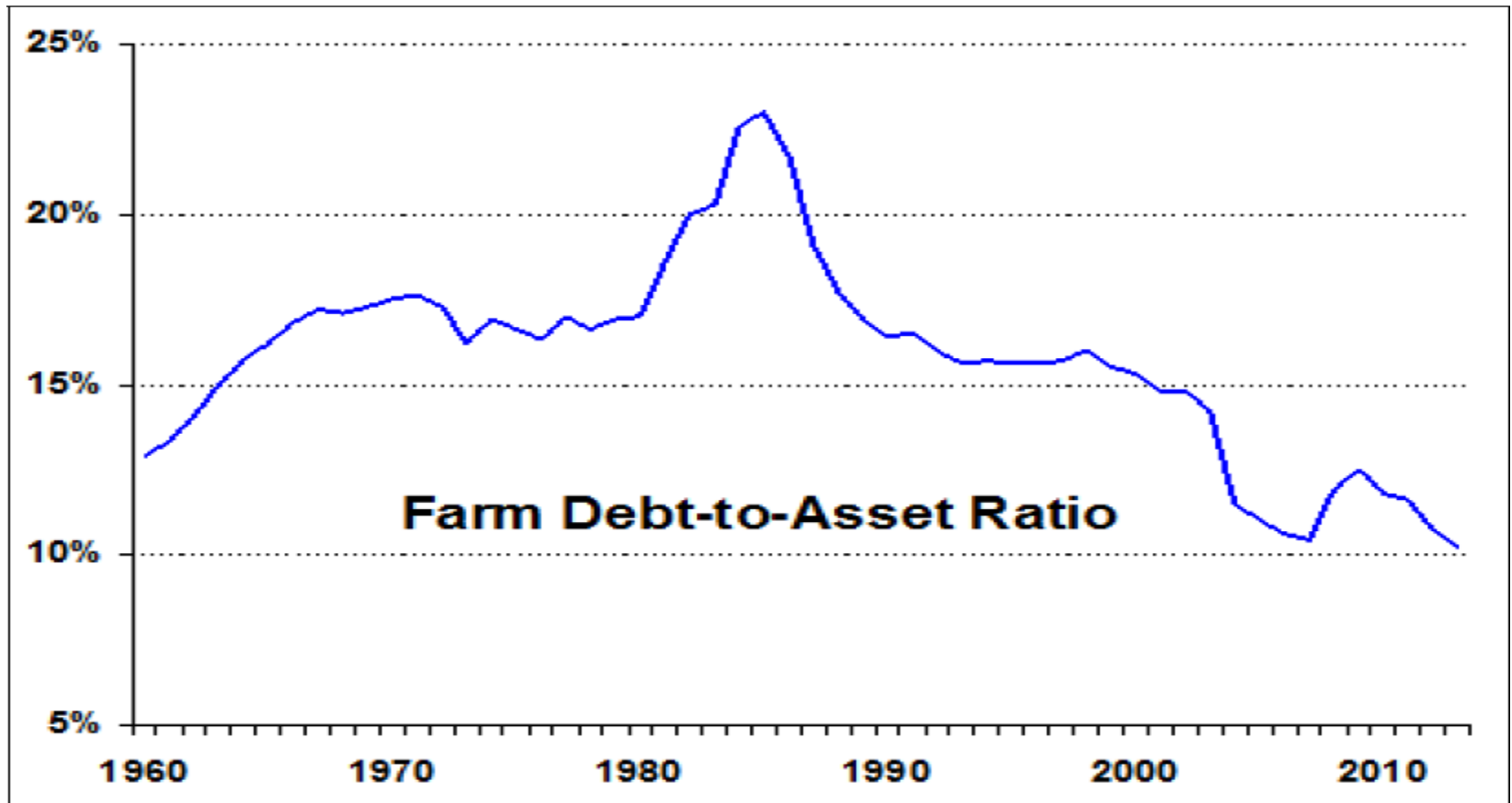
Income Statement

U.S. Net Farm Income



Balance Sheet

U.S. Farm Debt:Asset Ratio

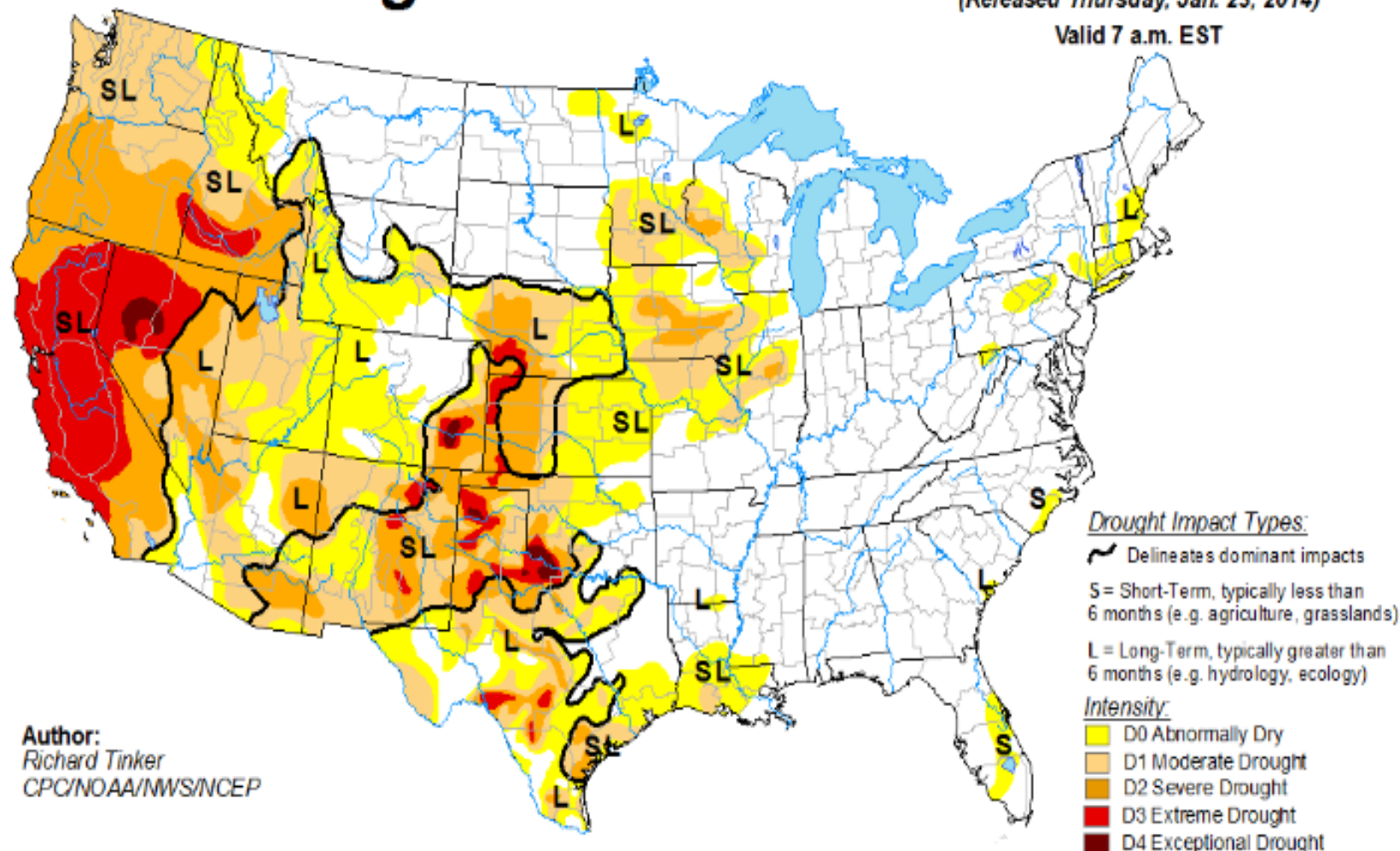


U.S. Drought Monitor

January 21, 2014

(Released Thursday, Jan. 23, 2014)

Valid 7 a.m. EST



Author:
Richard Tinker
CPC/NOAA/MWS/NCEP

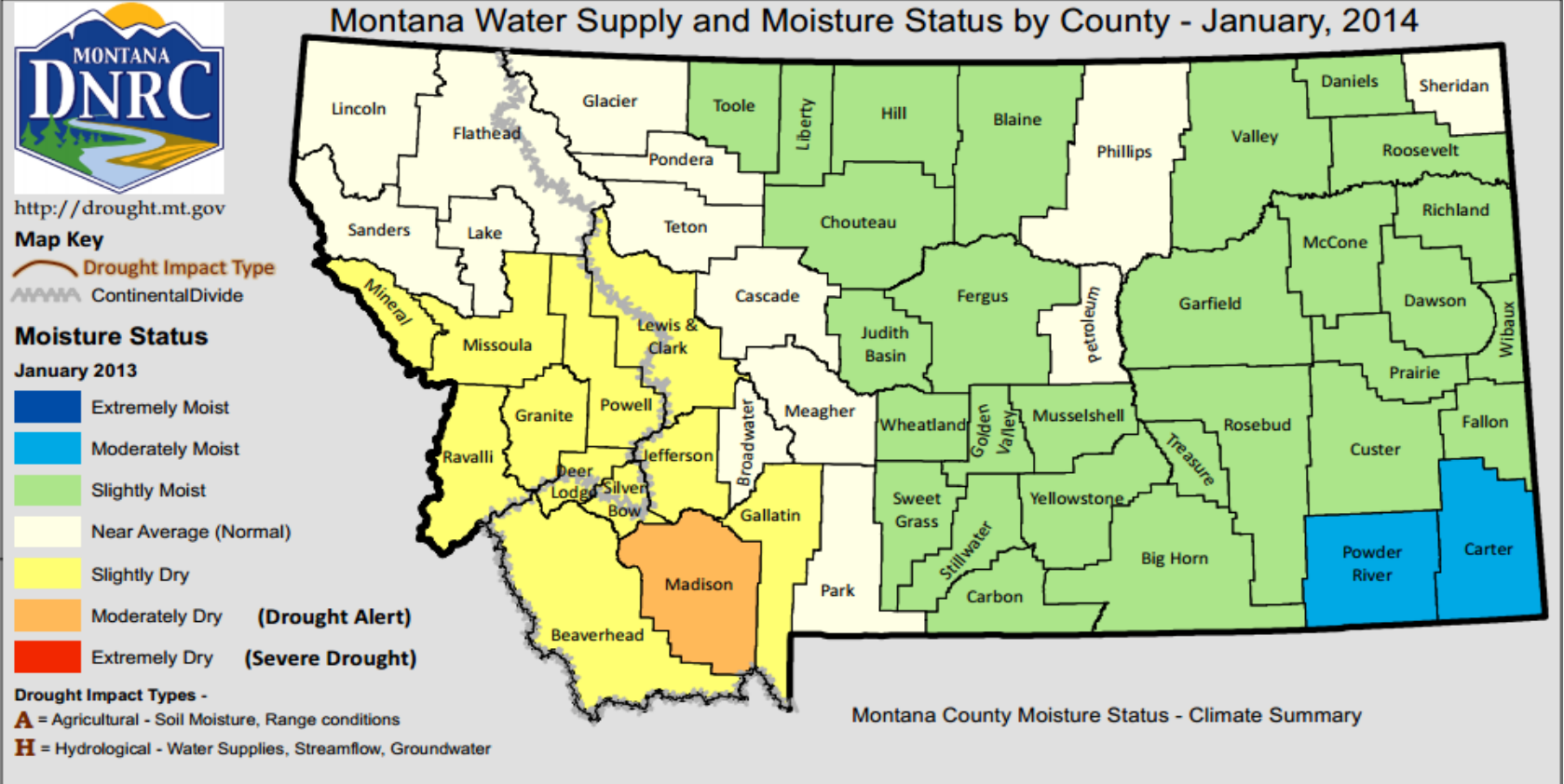


MONTANA
STATE UNIVERSITY

EXTENSION

Mountains & Minds

Drought Status – January 2014



CROPS (*GRAIN, HAY & PULSES*)



MONTANA
STATE UNIVERSITY

EXTENSION

Mountains & Minds

Global Wheat Market Shares

Country	2012/2013	shares	2013/2014	shares
	mmt	%	mmt	%
Australia	22.1	3.2	25.5	3.6
Canada	27.2	4.0	29.5	4.2
China	121.0	17.8	121.0	17.2
EU-27	133.1	19.5	142.9	20.3
India	94.9	13.9	92.5	13.1
FSU-12	77.2	11.3	107.0	15.2
U.S.	61.8	9.1	57.5	8.2
Other	143.5	21.1	129.5	18.4
Total	680.7	100.0	705.4	100.0

Source, WASDE-522, September 2013



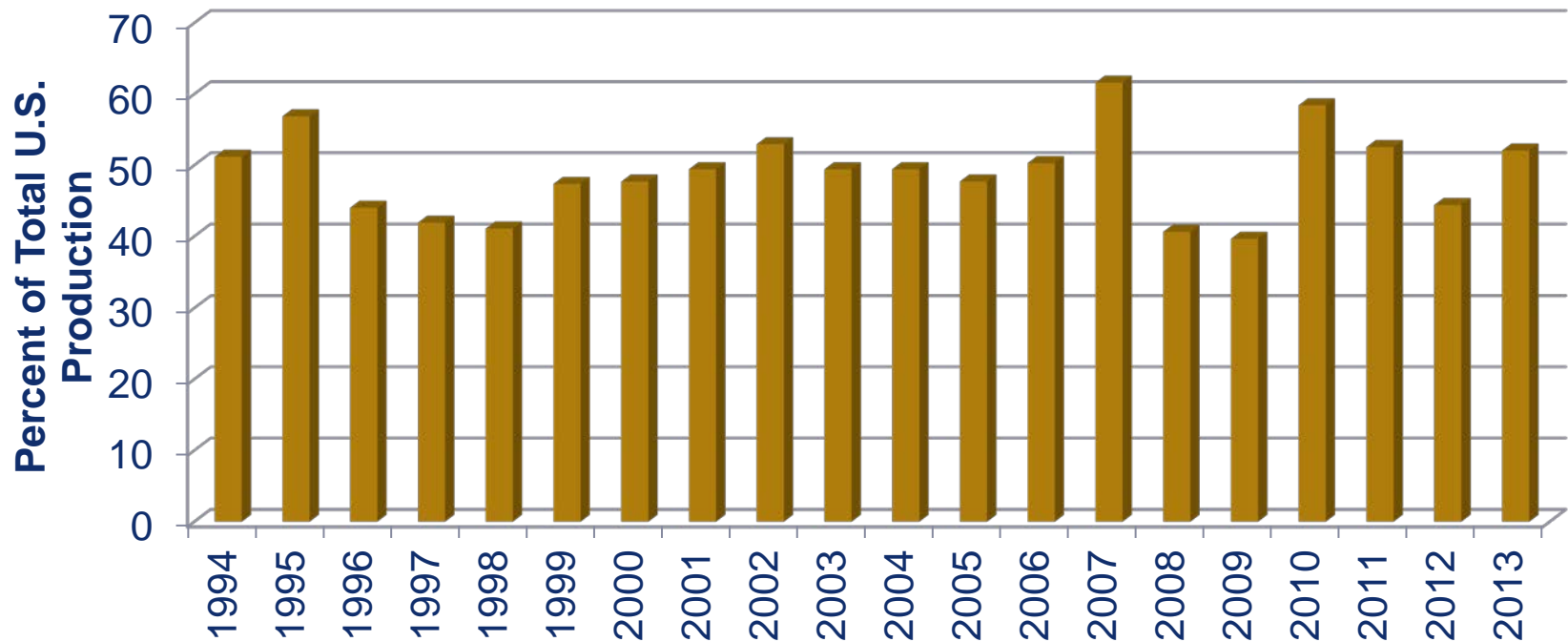
MONTANA
STATE UNIVERSITY

EXTENSION

Mountains & Minds

U.S. Wheat Exports

percent of total U.S. production



Total U.S. Exports = 1.0 b. bushels in 2012/2013 and 1.1 b. bushels in 2013/2014 – optimistic with increased sales to Brazil, EU and Russia

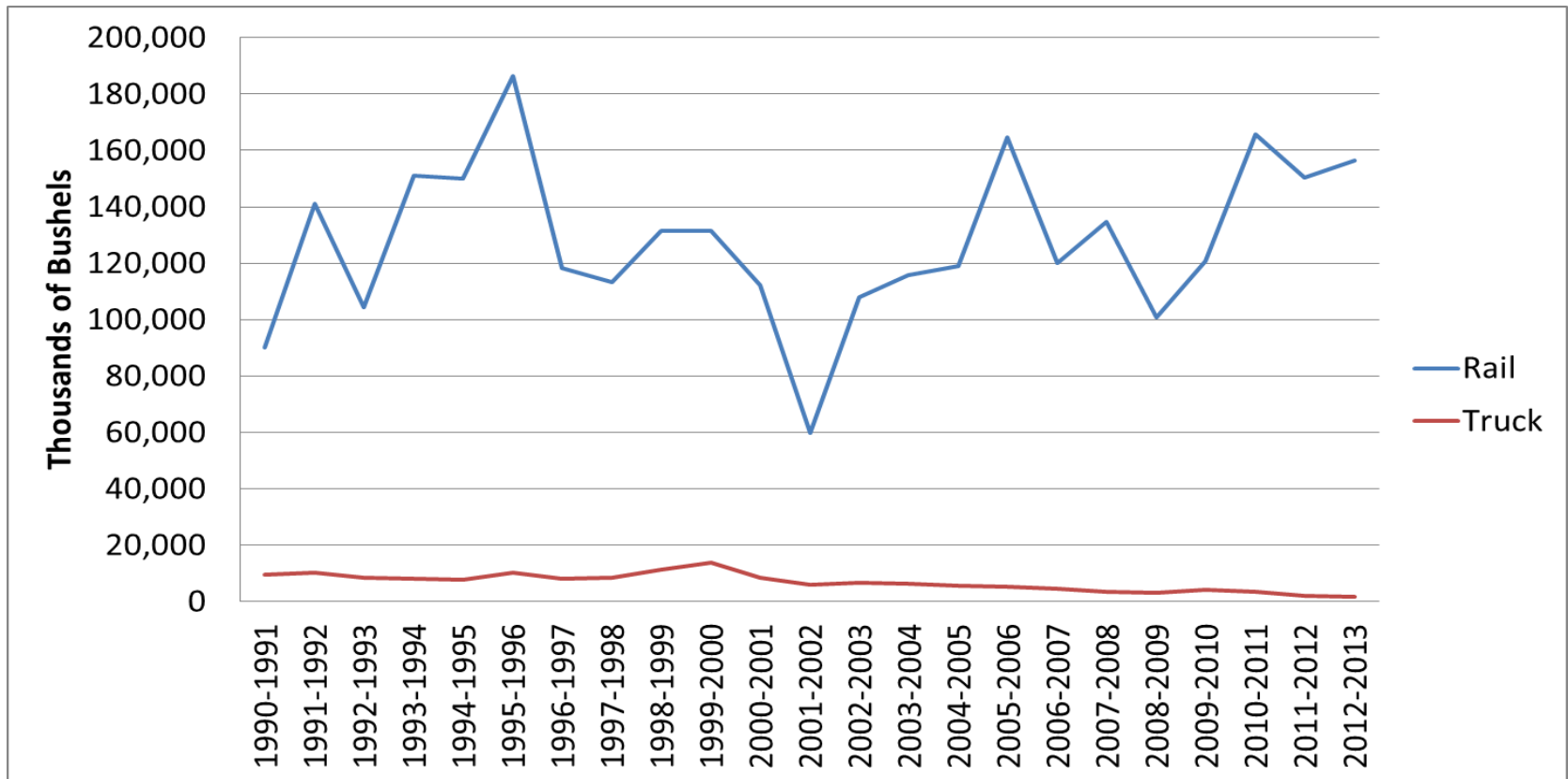


MONTANA
STATE UNIVERSITY

EXTENSION

Mountains & Minds

Montana Wheat Exports



NASS, wheat and barley shipments out of Montana – export 75% of total production

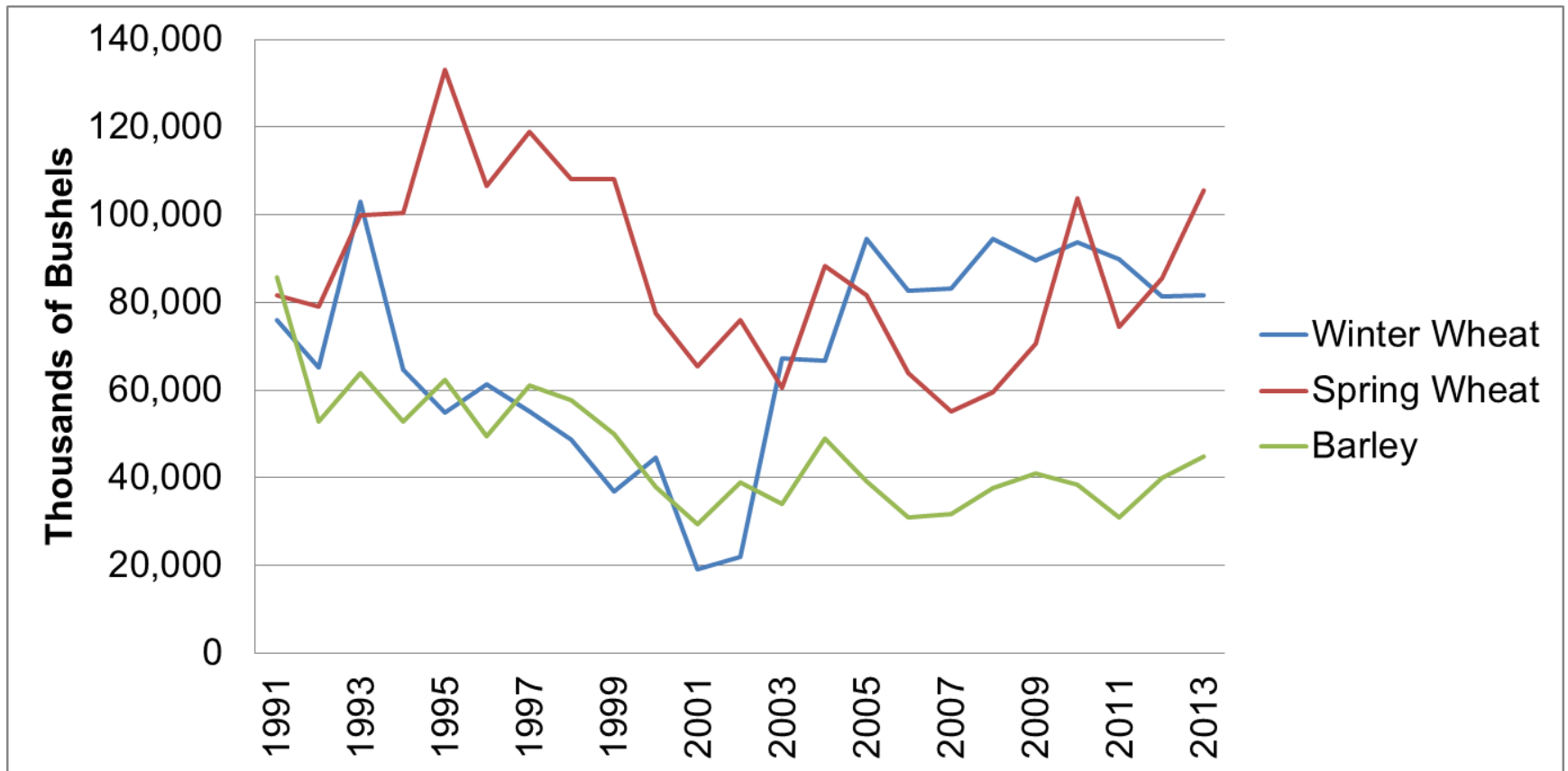


MONTANA
STATE UNIVERSITY

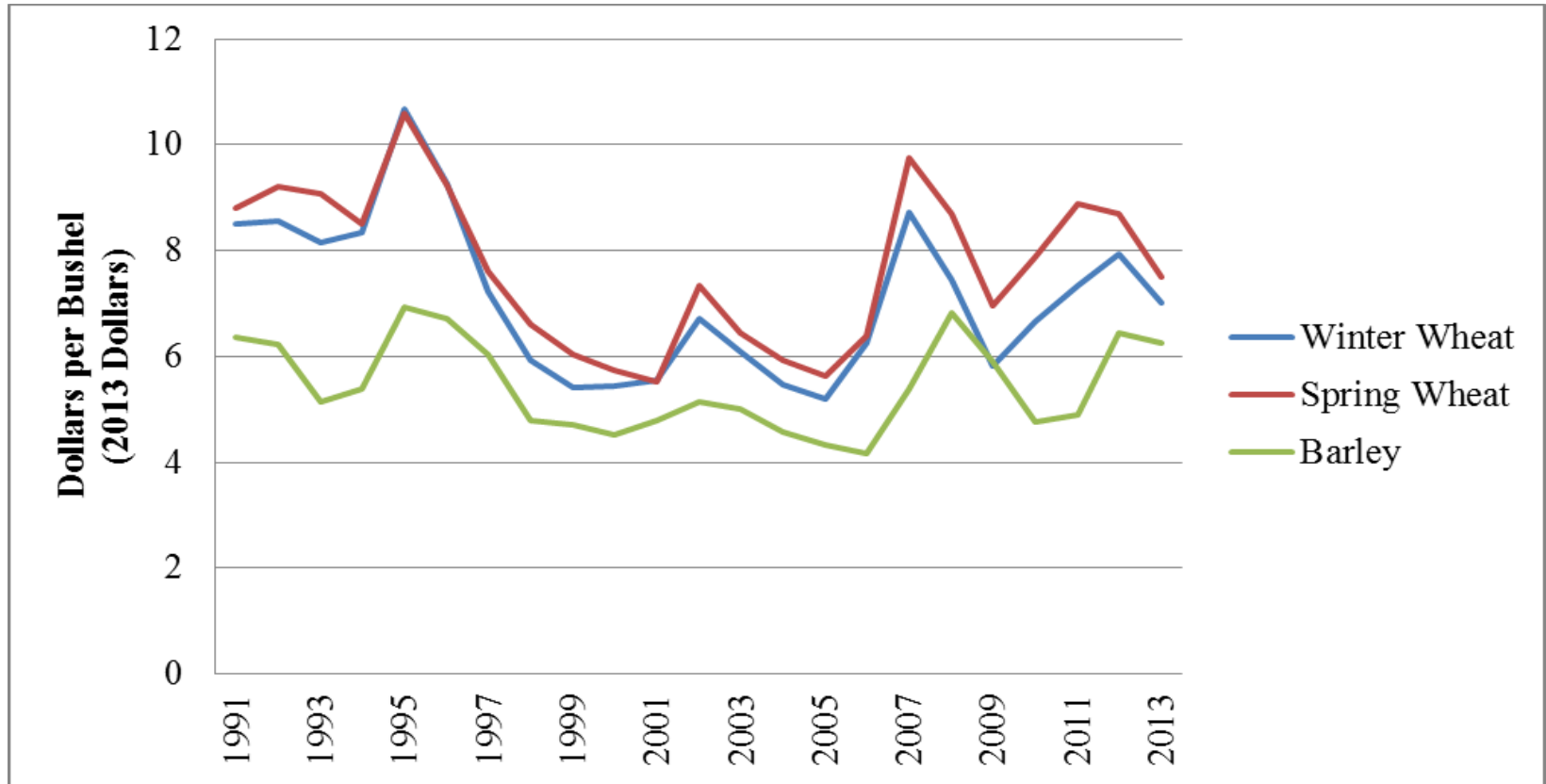
EXTENSION

Mountains & Minds

Montana Grain Production (2013)



Montana Grain Prices (2013 dollars)



Prices – 12/2013: WW – 6.10; SW – 6.65; BAR – 6.25; MBAR – 9.50

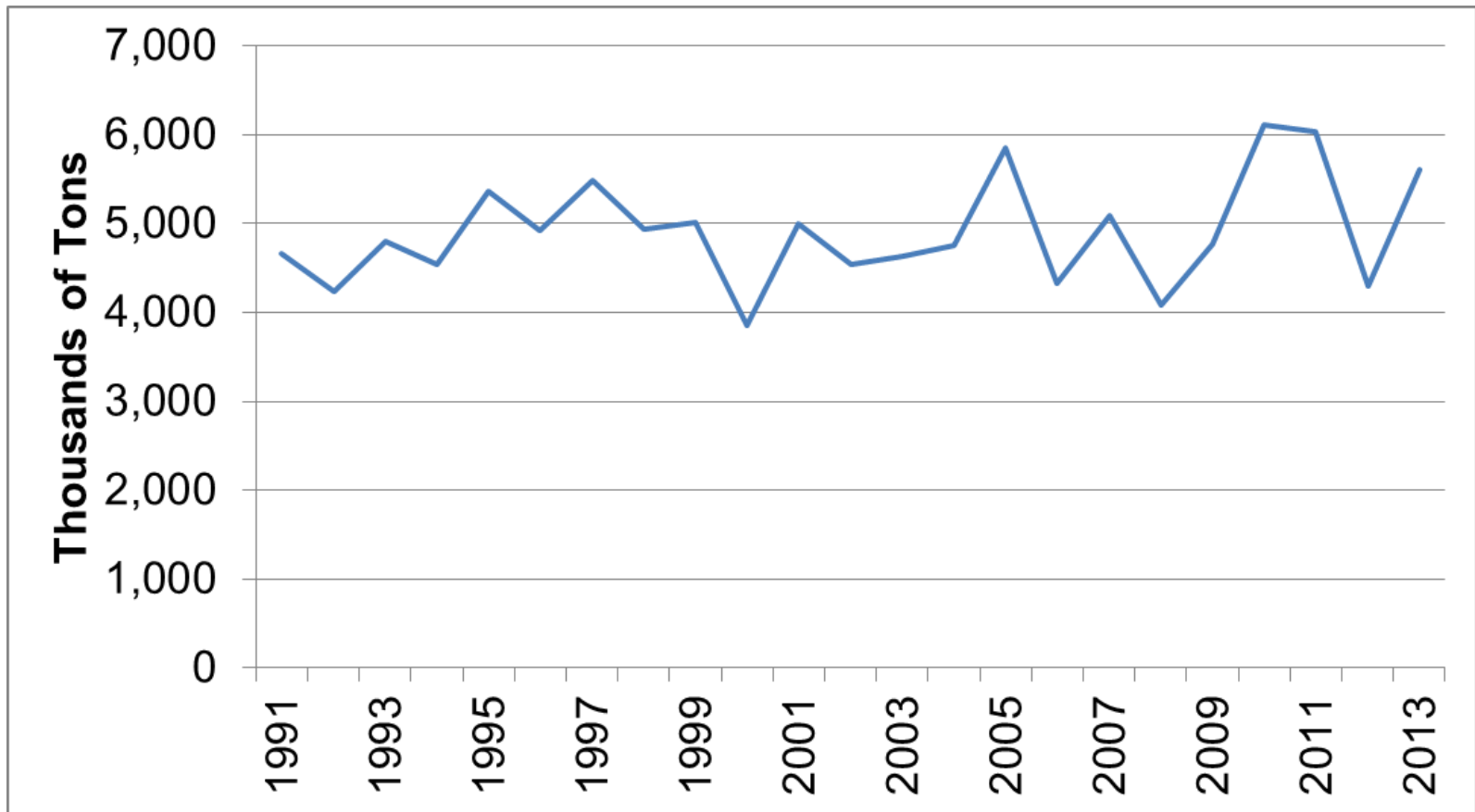


MONTANA
STATE UNIVERSITY

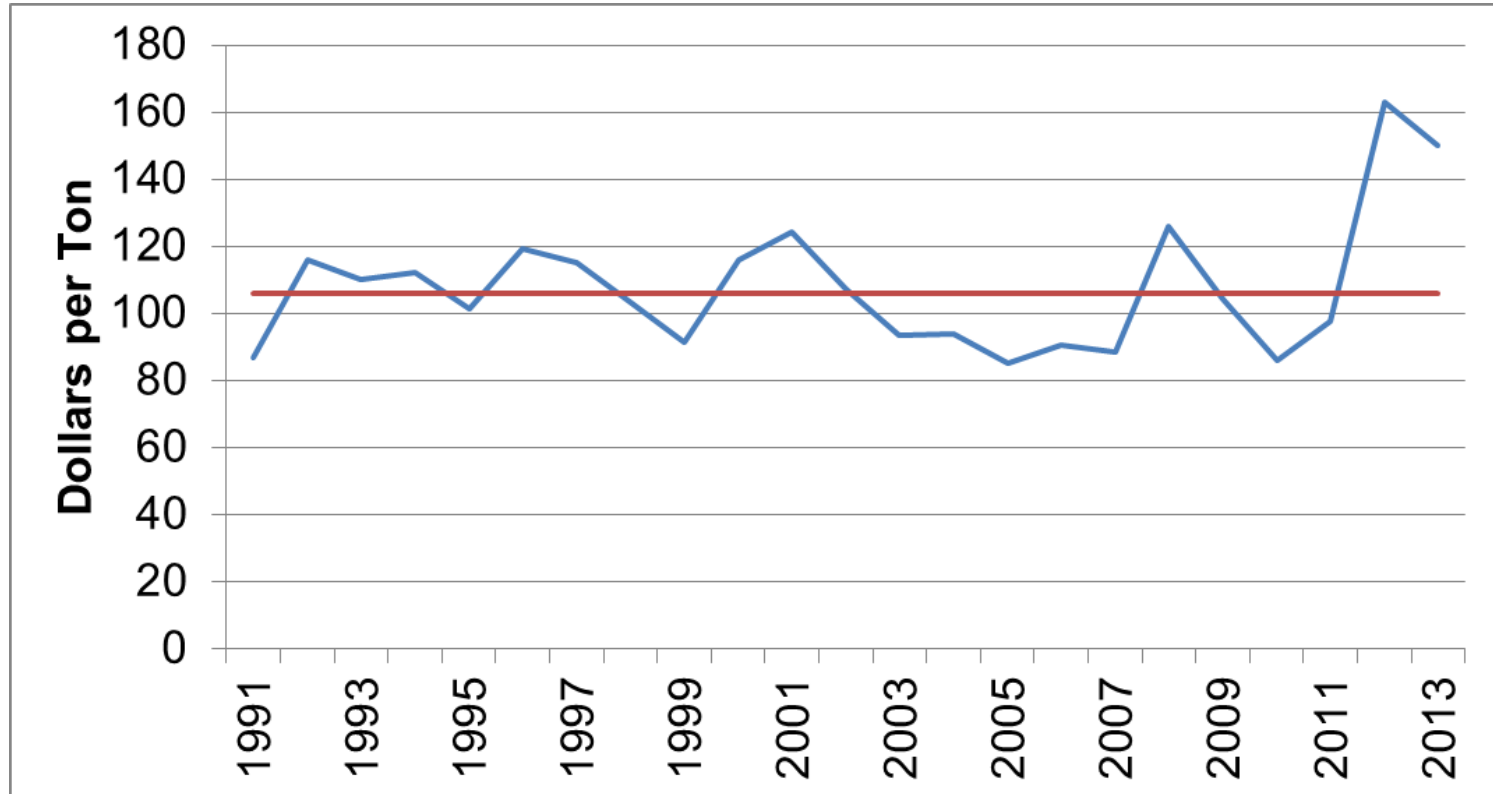
EXTENSION

Mountains & Minds

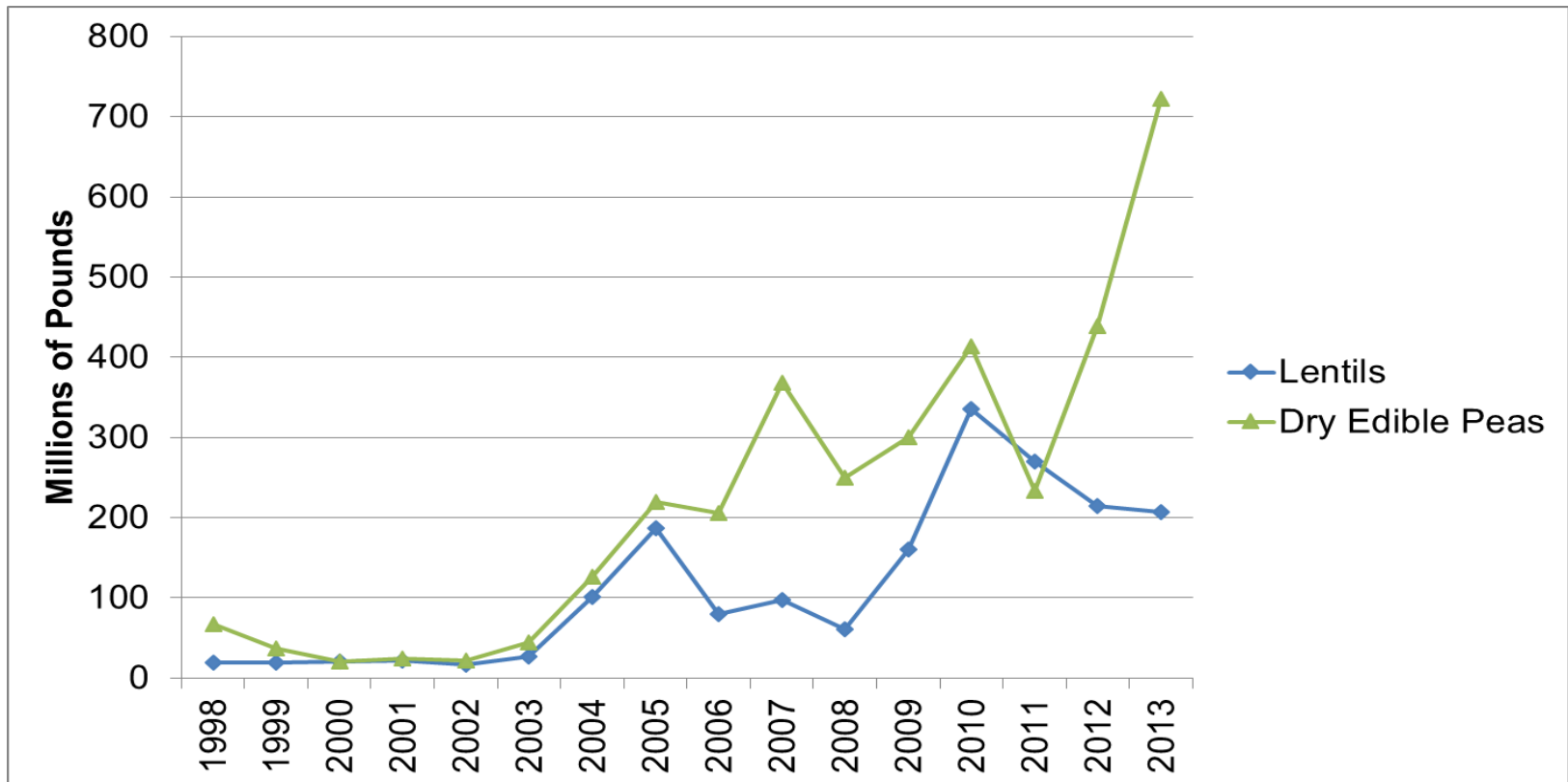
Montana Hay Production (2013)



Montana Hay Prices (2013 dollars)



Montana Pulse Production



Dry peas, 30% more acres (380,000) and yield increased by 400 lbs./acre from 2012; lentils down slightly (3%)

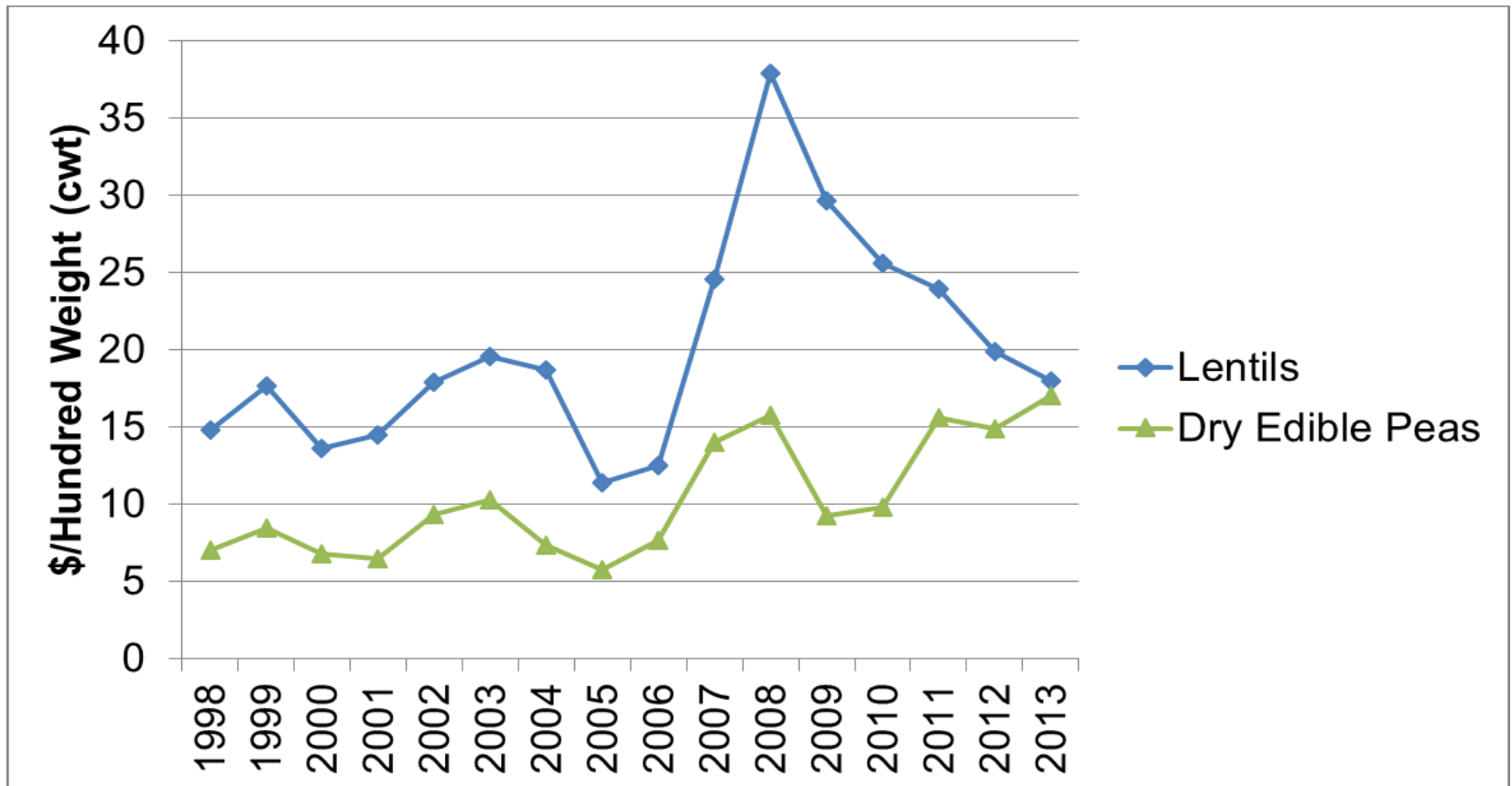


MONTANA
STATE UNIVERSITY

EXTENSION

Mountains & Minds

Montana Pulse Prices



Futures Prices

(no basis adjustment – 02/12/14)

Location	Units	03/14	05/14	07/14	09/14
Minneapolis Grain Exchange					
Hard Red Spring Wheat	\$/bu	6.56	6.37	6.39	6.48
Kansas City Board of Trade					
Winter Wheat	\$/bu	6.63	6.54	6.44	6.54
Chicago Board of Trade					
Corn	\$/bu	4.40	4.46	4.51	4.52

September futures in March for HRSW were 9.50/bu. (-34%) - - corn futures were 7.95 (-44%)
 Supply side (corn) – 10.8 b. bu 2012 - - 13.8b. bu 2013



Montana Wheat 2014

- *2013/2014 Winter Wheat Plantings* → **positive**
- *2014 Production/Prices*
 - *MT 2014 All Wheat Price: less optimistic*
- *Farm Bill*
 - *More insurance-type programs*

CATTLE

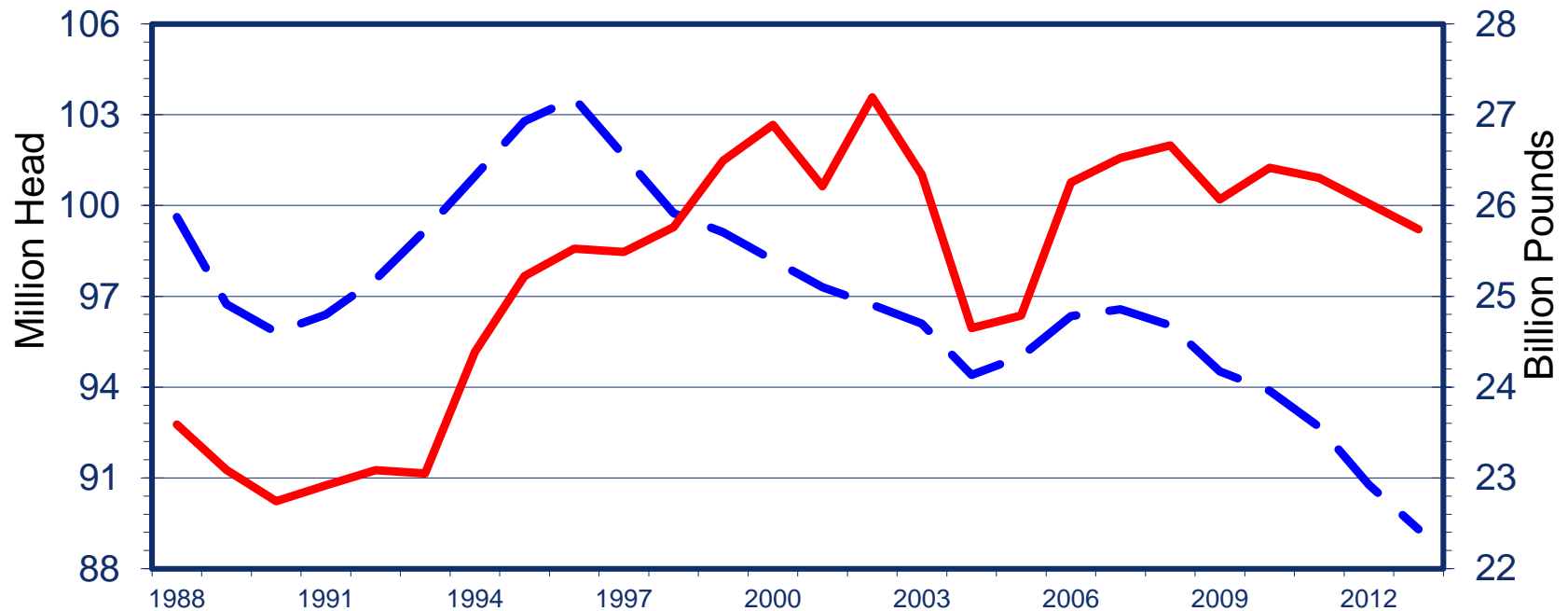


MONTANA
STATE UNIVERSITY

EXTENSION

Mountains & Minds

U.S. Beef Production and Cattle Herd Size



Source: LMIC, 12/2013



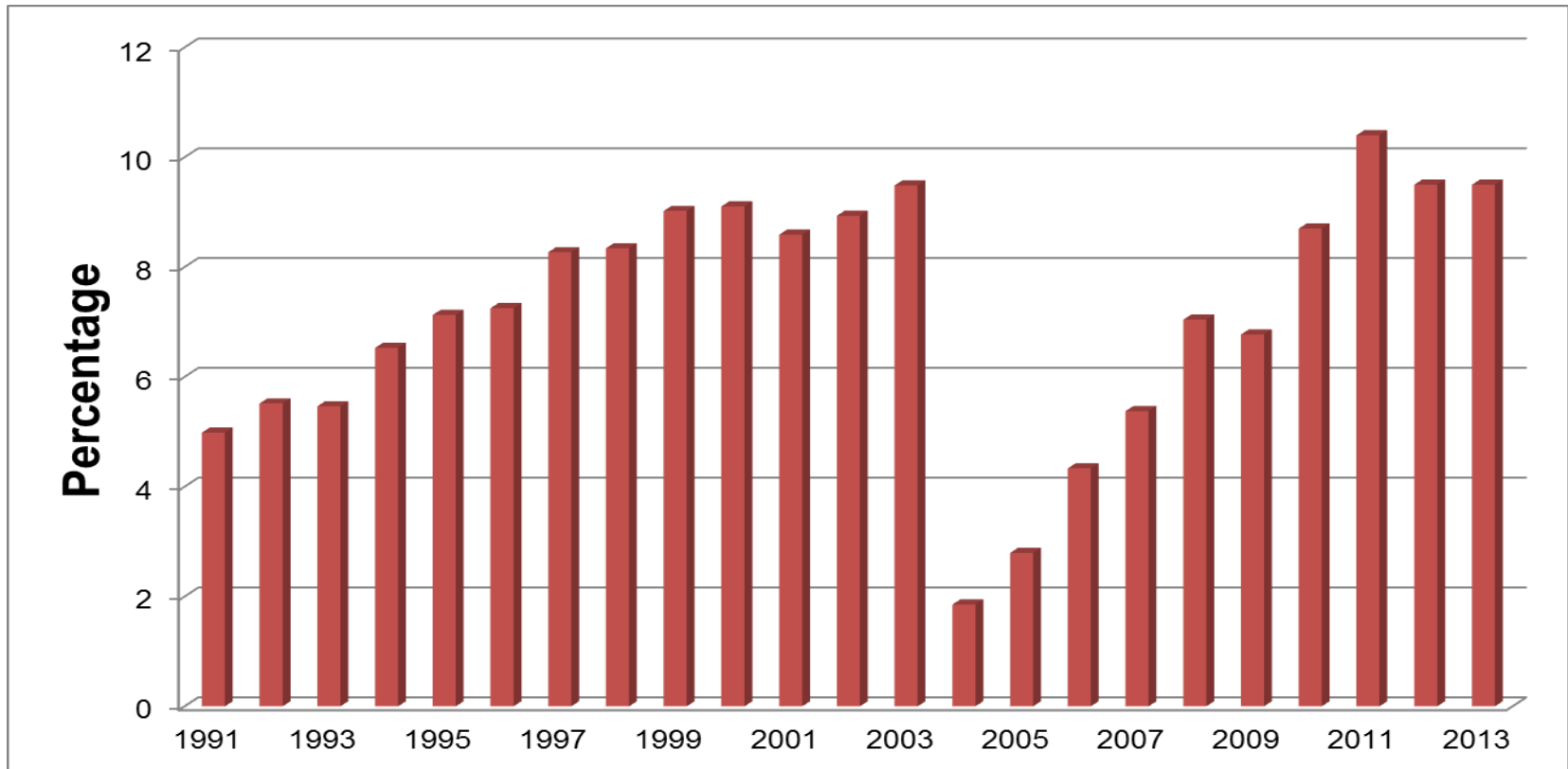
MONTANA
STATE UNIVERSITY

EXTENSION

Mountains & Minds

U.S Beef Exports

Percentage of Total Production



LMIC – 2% decline 2012 to 2013, but forecast 4.5% decline in 2014 – 2.5 b. lbs./year - \$21 m. Russia (91% of exports MT)

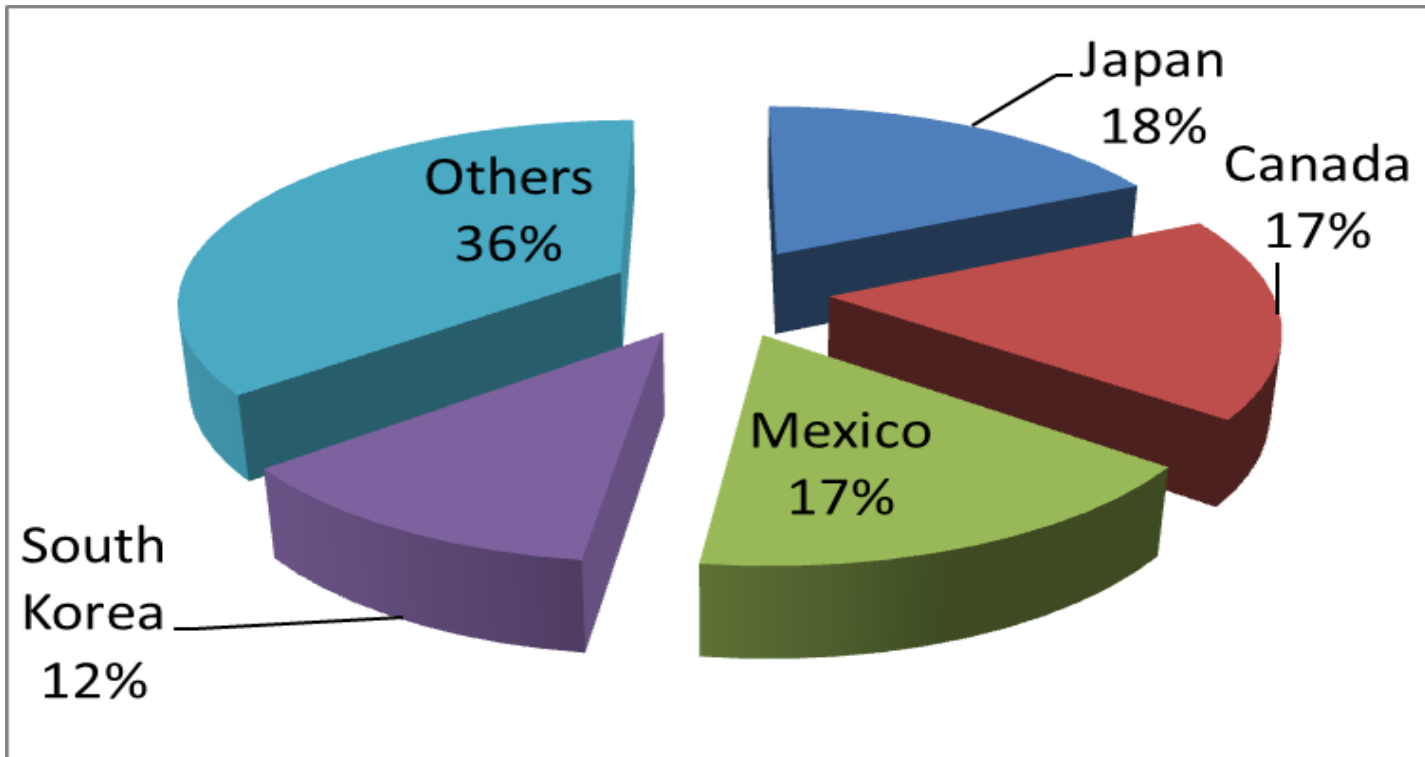


MONTANA
STATE UNIVERSITY

EXTENSION

Mountains & Minds

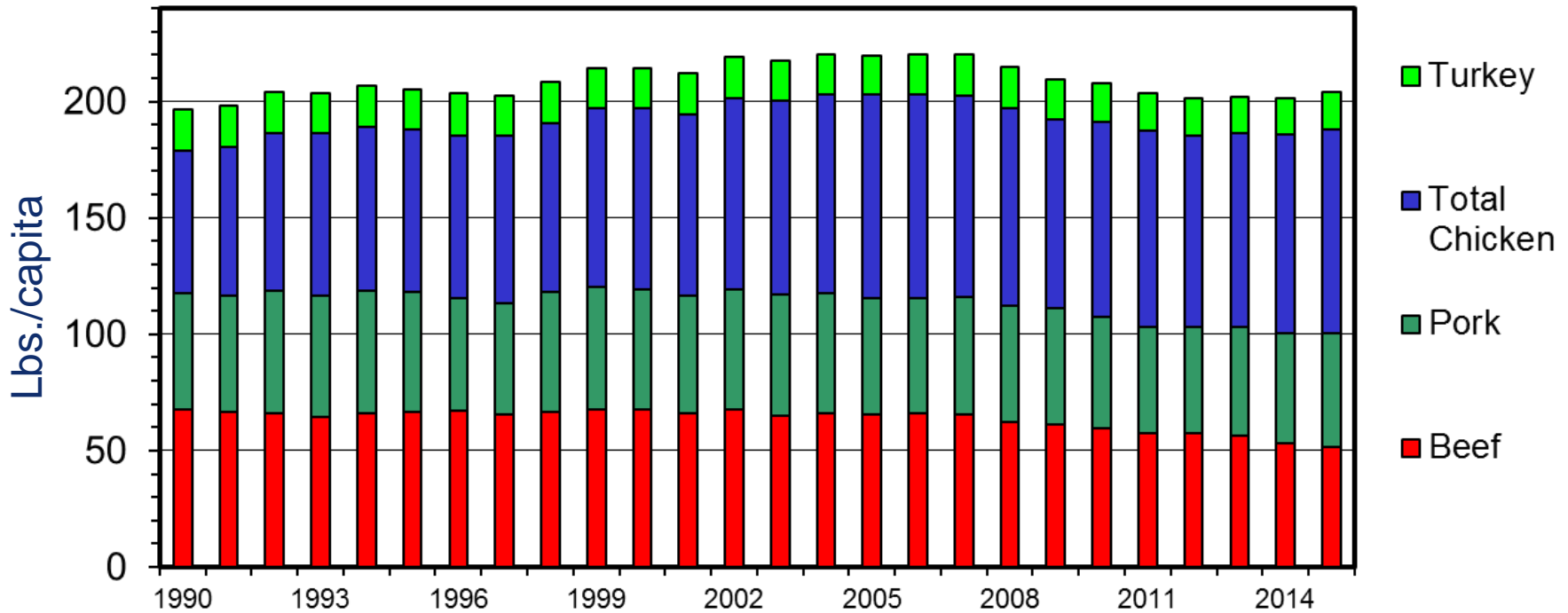
Exports – who's buying U.S. beef



52% surge in exports to Japan



Domestic Demand (per capita, retail, annual)



LMIC, 12/2013

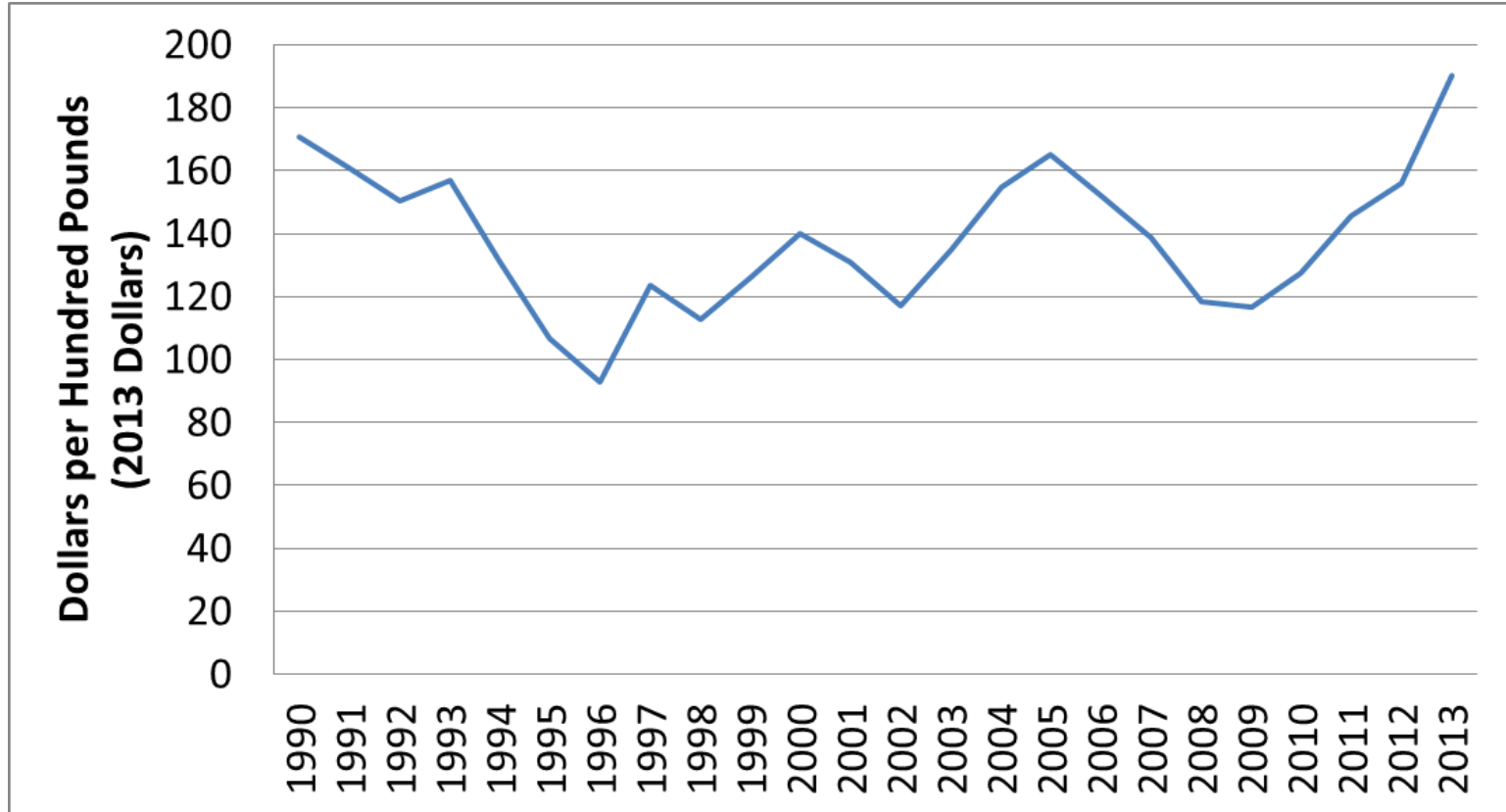


MONTANA
STATE UNIVERSITY

EXTENSION

Mountains & Minds

Calf Prices (2013 dollars)



LMIC – price estimates 2013



MONTANA
STATE UNIVERSITY

EXTENSION

Mountains & Minds

Futures Prices

(no basis adjustments – 2/12/14)

Location	03/14	05/14	08/14	9/14
Chicago Mercantile Exchange				
Feeder Cattle with Stocker				
Adjustment, \$/cwt	195	196	196	197

Futures price + stocker index adjustment (+0.26)



MONTANA
STATE UNIVERSITY

EXTENSION

Mountains & Minds

Montana Cattle 2013/14

- **Strong prices for cow/calf producers**
 - Optimistic about calf prices through 2016

- **Opportunity to increase cattle herd**
 - **Headwinds**
 - Consumer demand
 - Beef as a “loss leader”
 - Source verification

 - Tax and regulatory policy (*and organic/natural/locally grown*)
 - Food Modernization Act



Questions



MONTANA
STATE UNIVERSITY

EXTENSION

Mountains & Minds