



Local Outlook: Richland County

By Paul E. Polzin

Director Emeritus

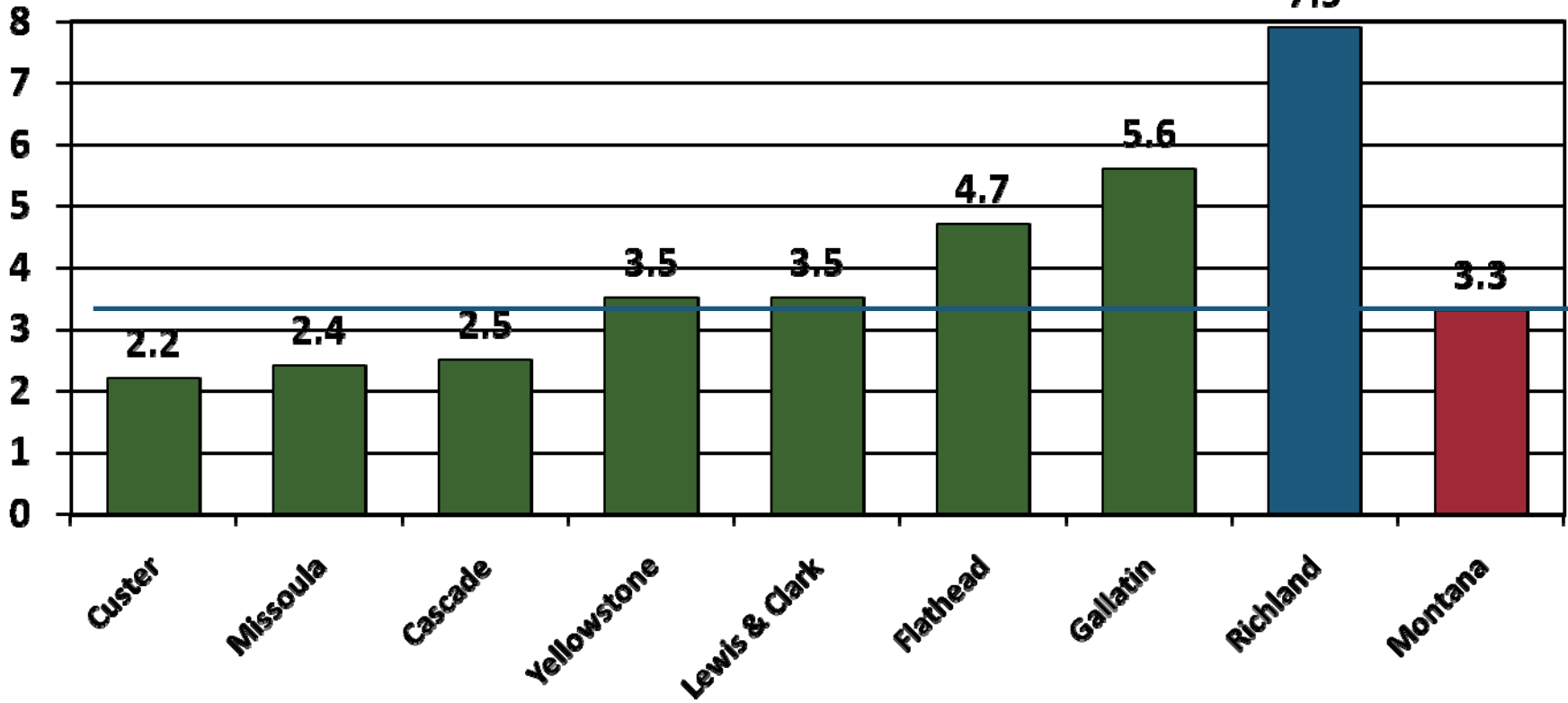
Bureau of Business and Economic Research

The University of Montana

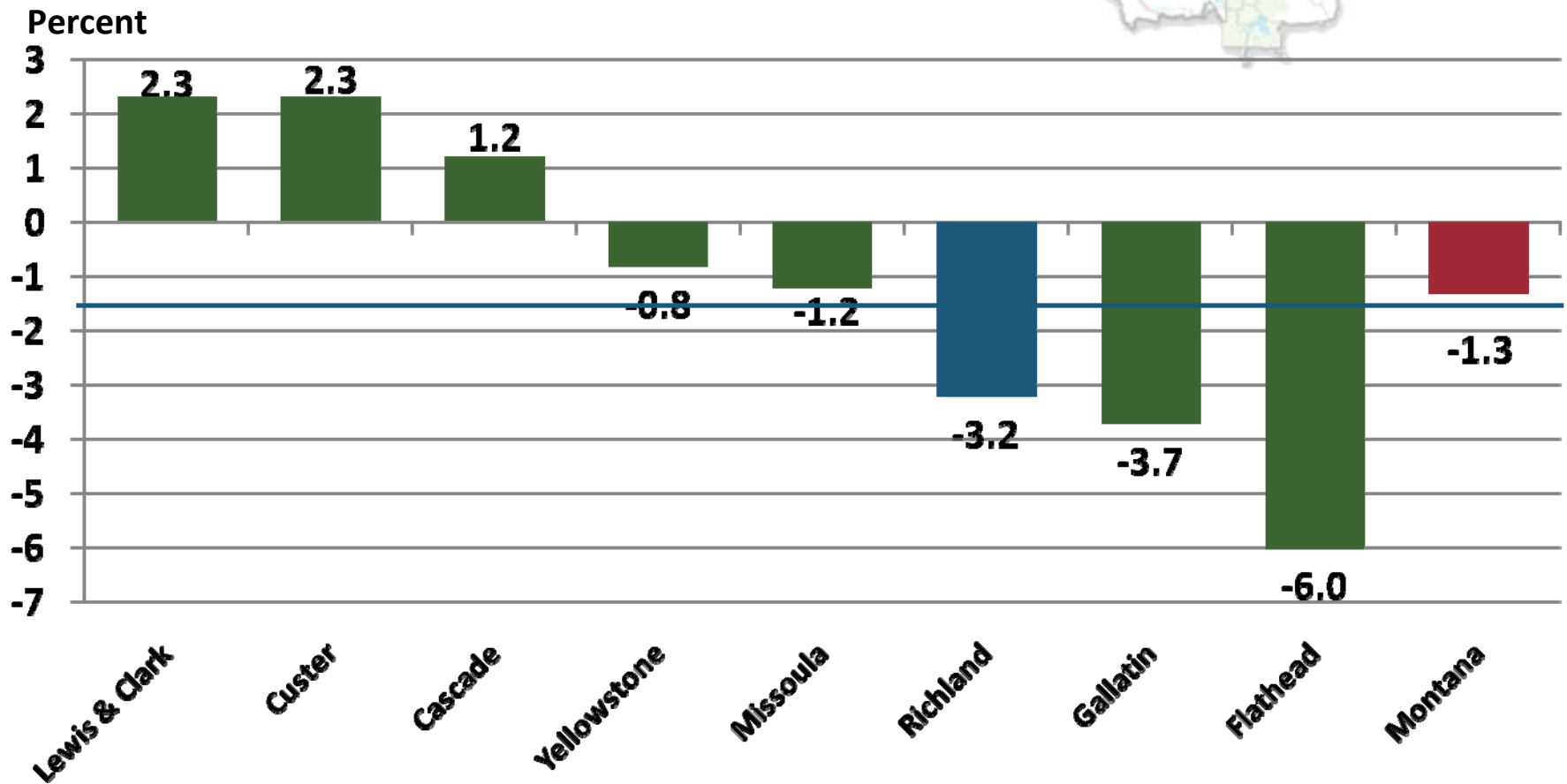


Annual Percent Change in Nonfarm Labor Income (in Constant Dollars), 2001-2007

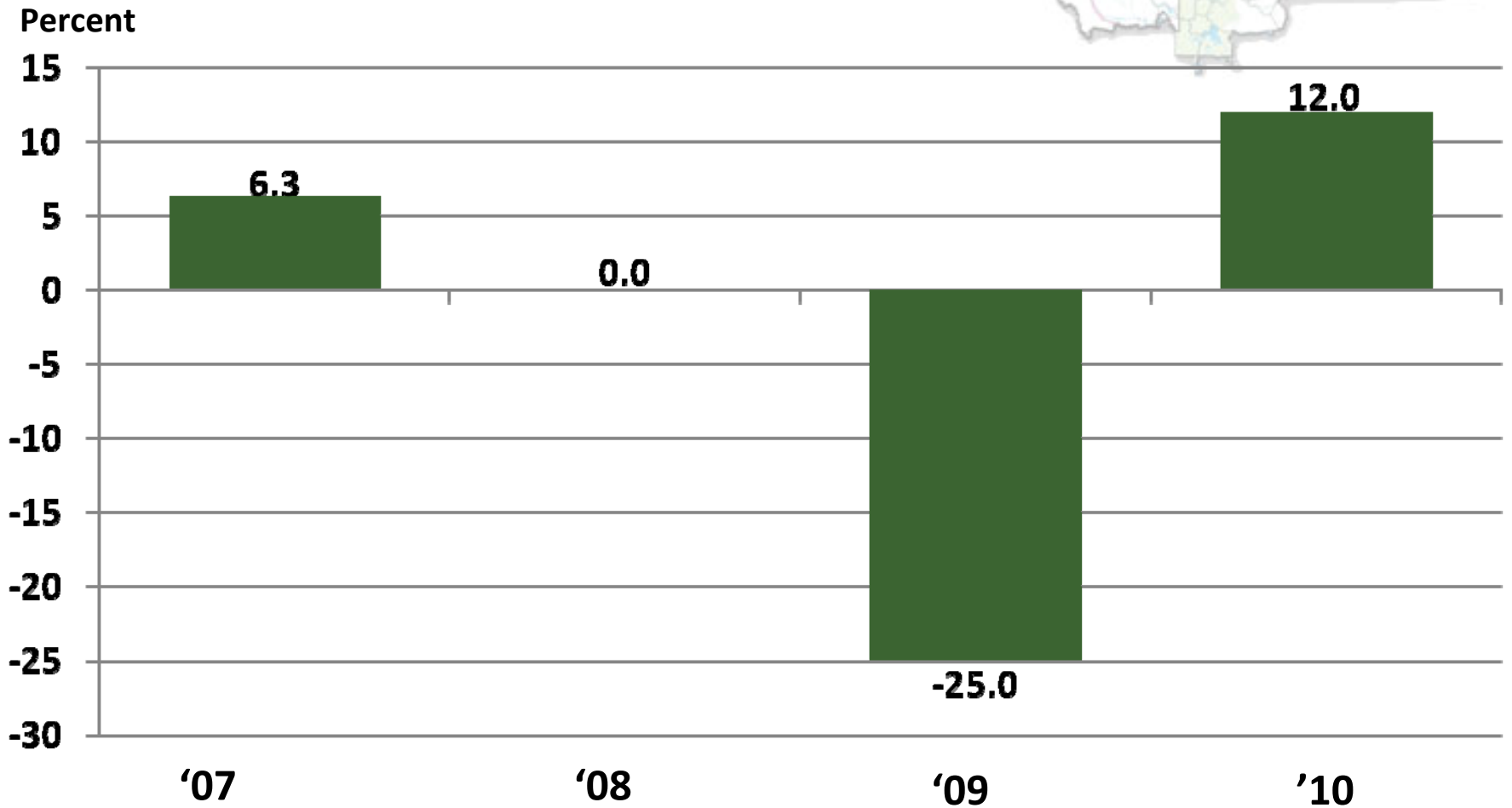
Percent



Annual Percent Change in Nonfarm Labor Income (in Constant Dollars) , 2008-2009

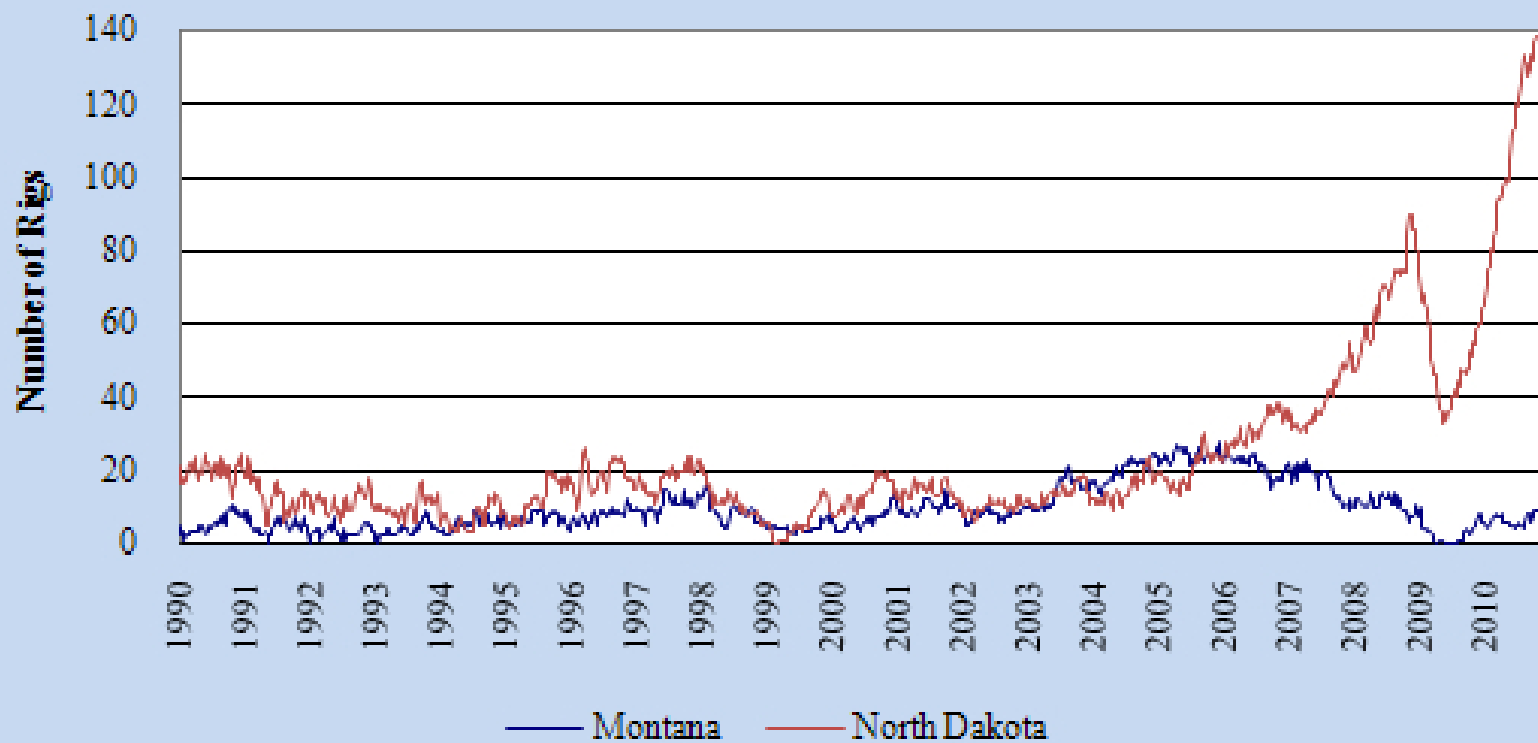


Annual Percent Change in Mining Labor Income (in Constant Dollars), Richland County





Oil Rig Counts By Month Montana versus North Dakota



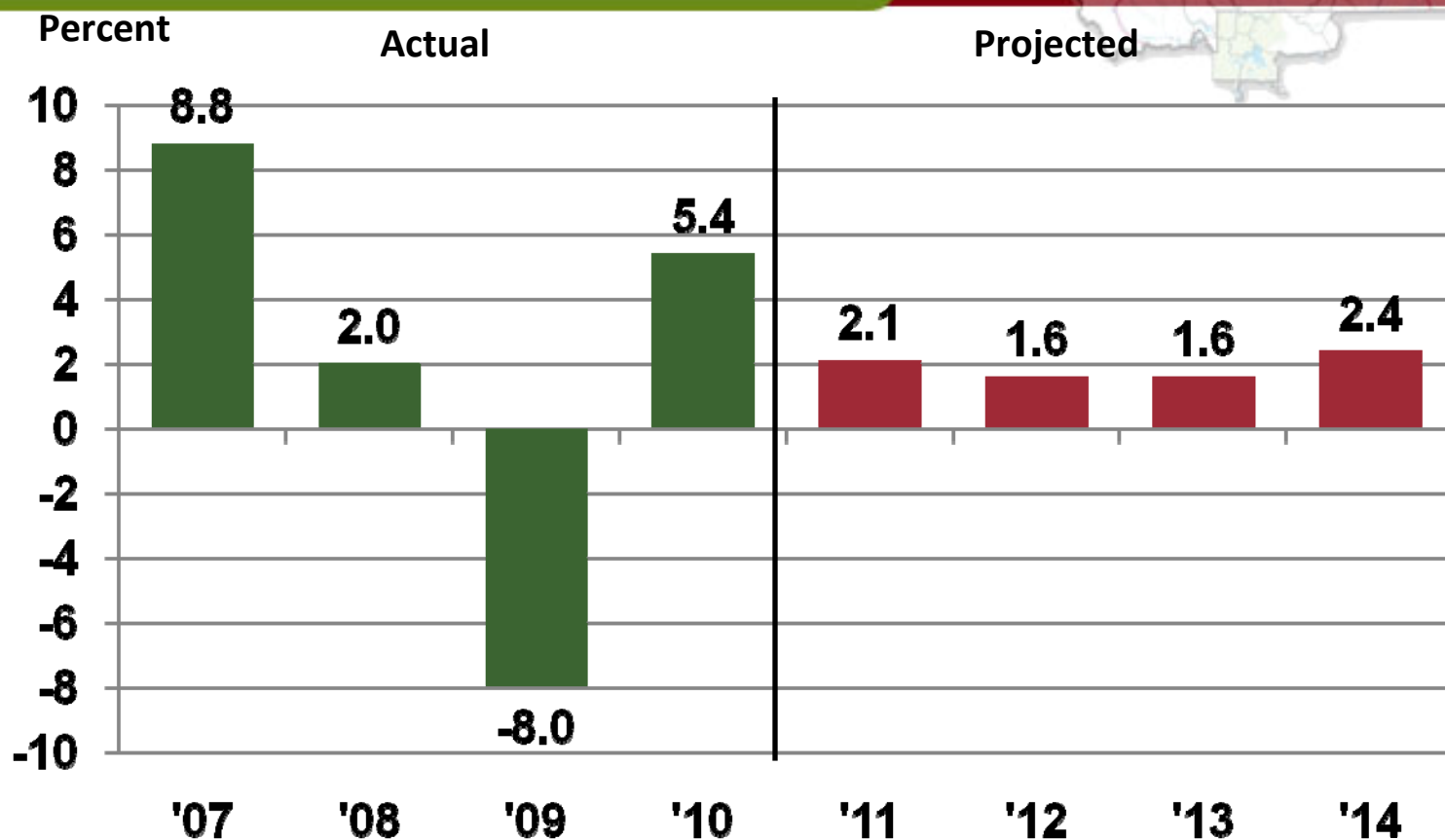
Richland County's Economic Base 2008-2010

- Other 8%
- Health Care 4%
- Fed. Gov't 7%
- Transportation 10%
- Manufacturing 11%
- Ag. and Ag. Related 19%
- Oil and Coal 41%

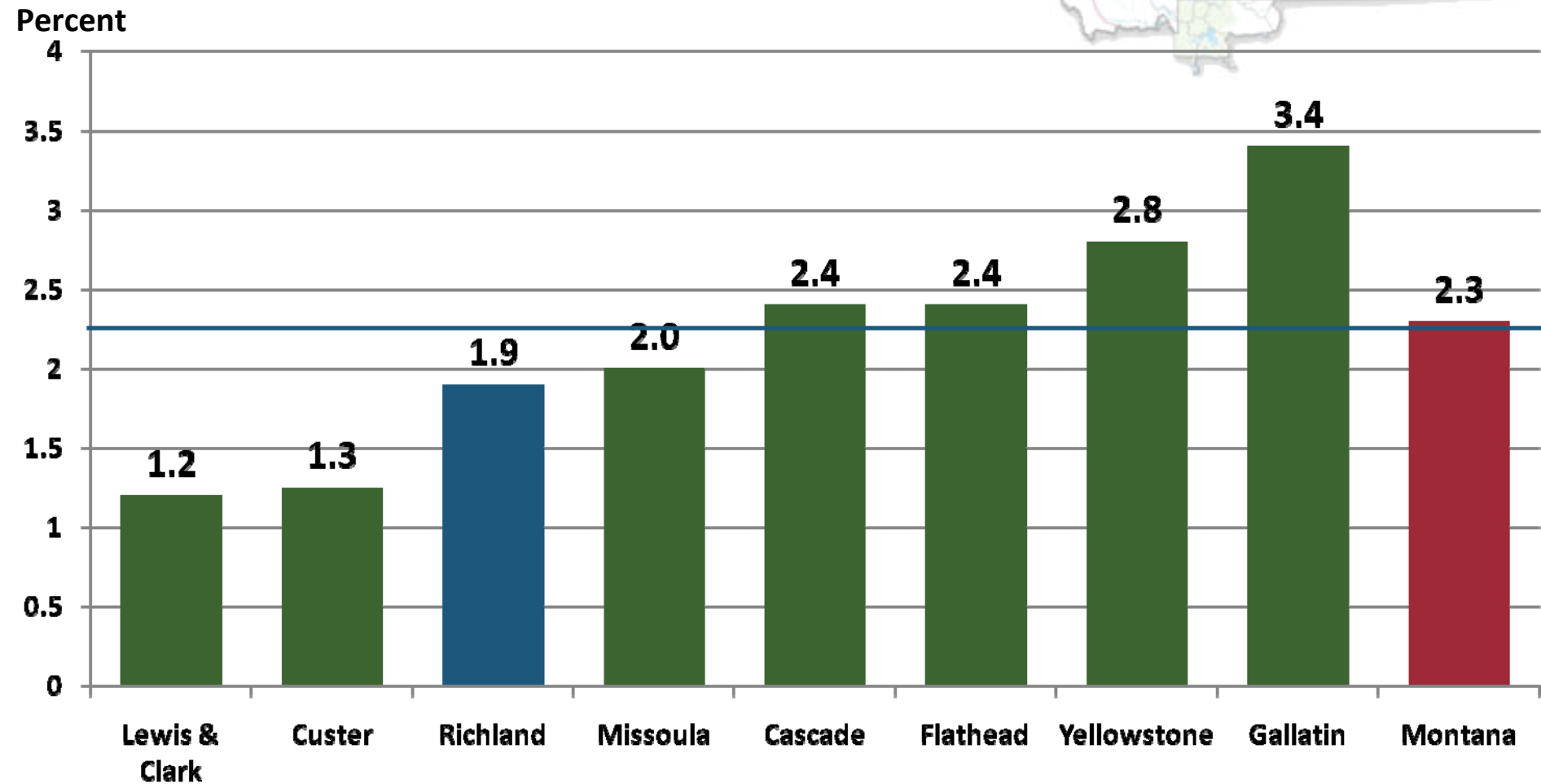
?
Stable at Best
Slow Recovery
Stable
Optimistic
World Trends?



Actual and Projected Change in Nonfarm Labor Income, Richland County, 2007-2014



Projected Annual Percent Change in Nonfarm Labor Income (in Constant Dollars) 2010-2014





Questions?