





Local Outlook: Great Falls

By Paul E. Polzin

Director Emeritus

Bureau of Business and Economic Research

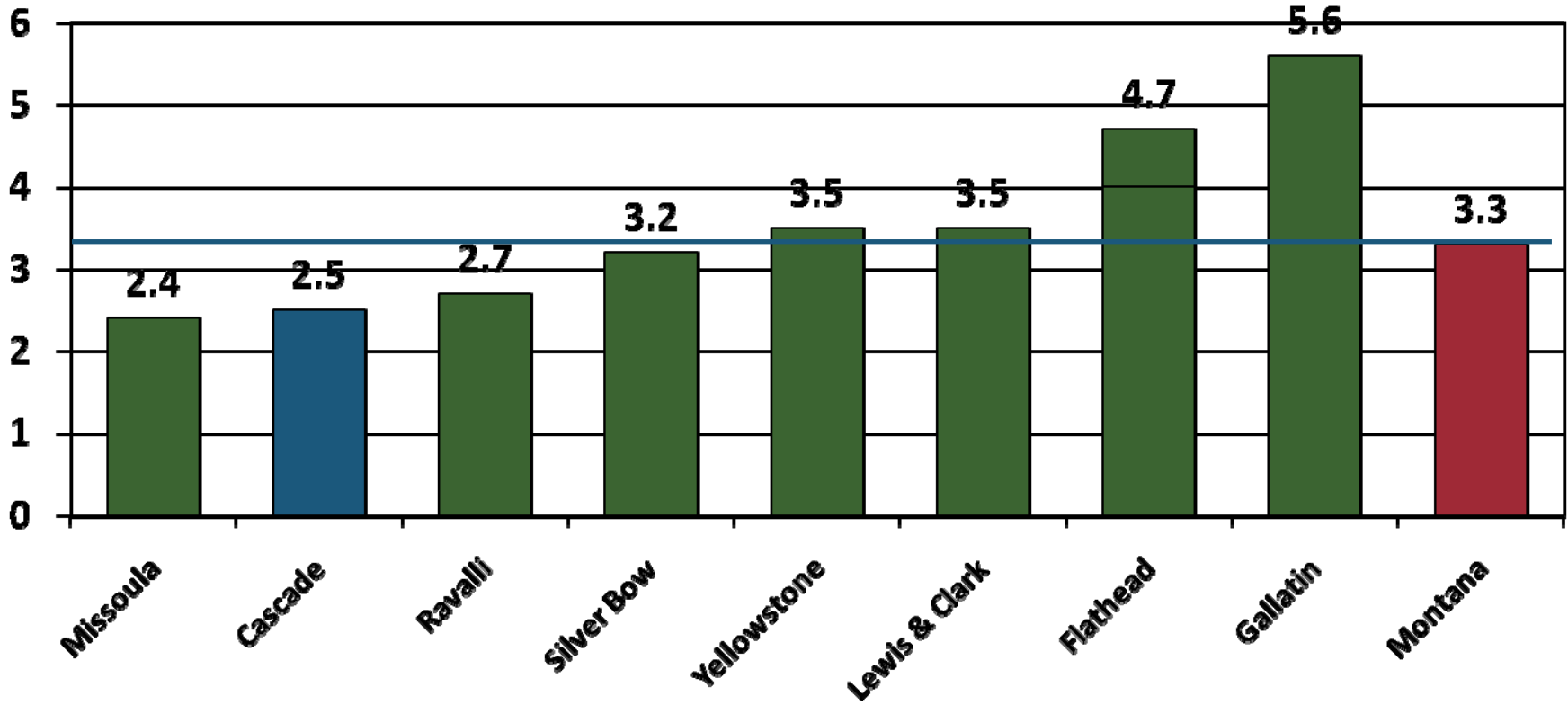
The University of Montana



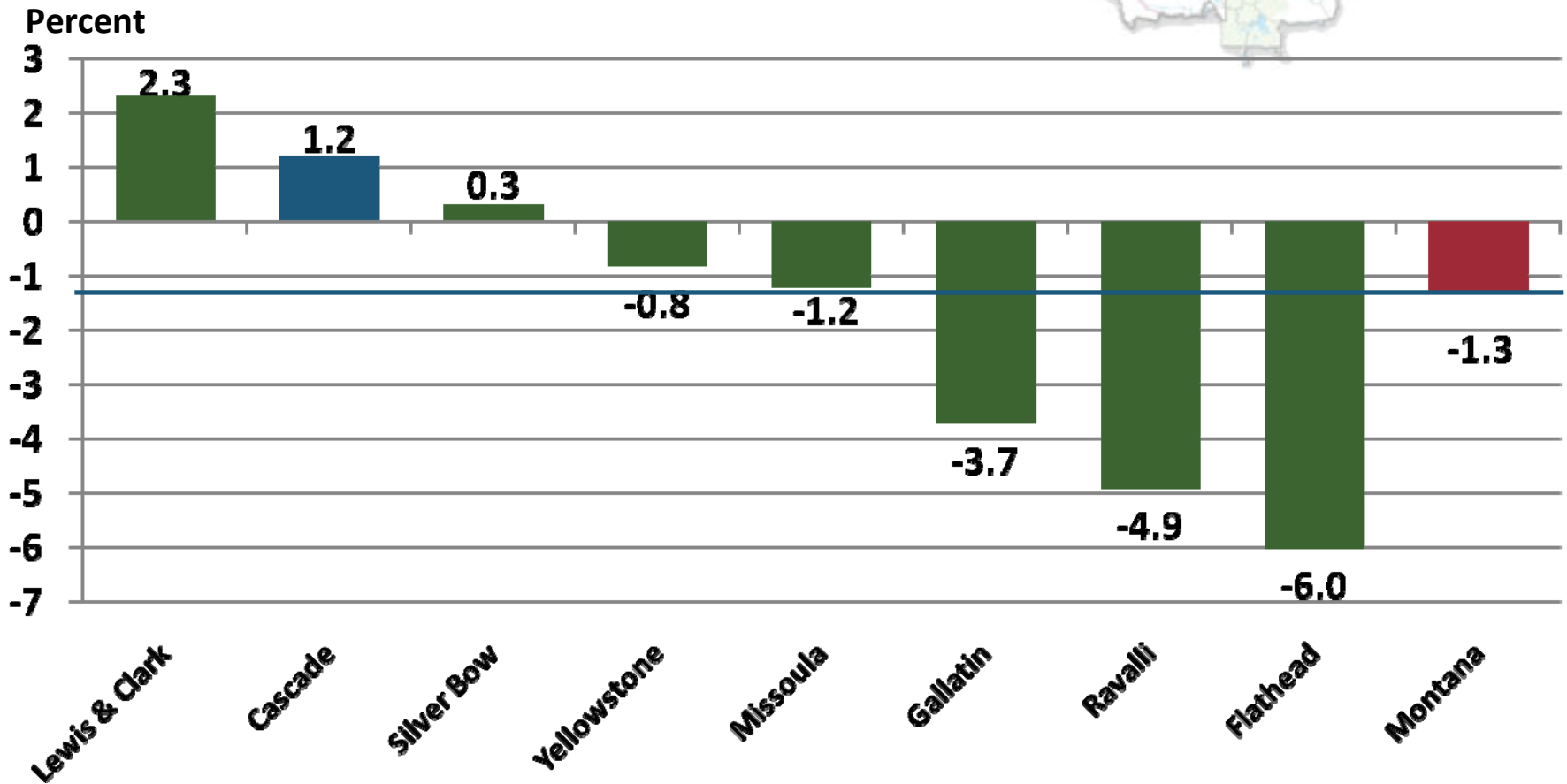
Annual Percent Change in Nonfarm Labor Income (in Constant Dollars), 2001-2007



Percent

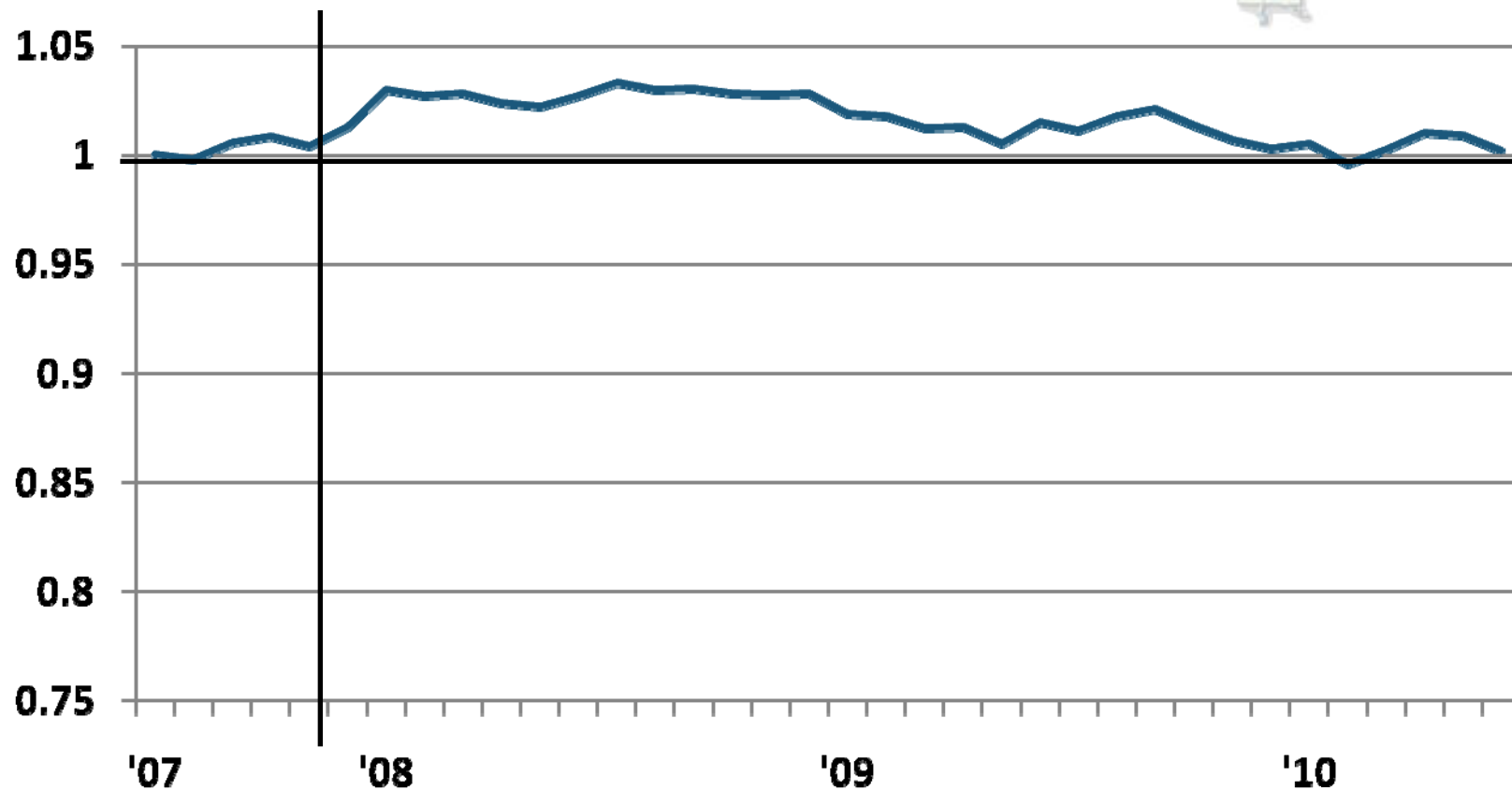


Annual Percent Change in Nonfarm Labor Income (in Constant Dollars) , 2008-2009

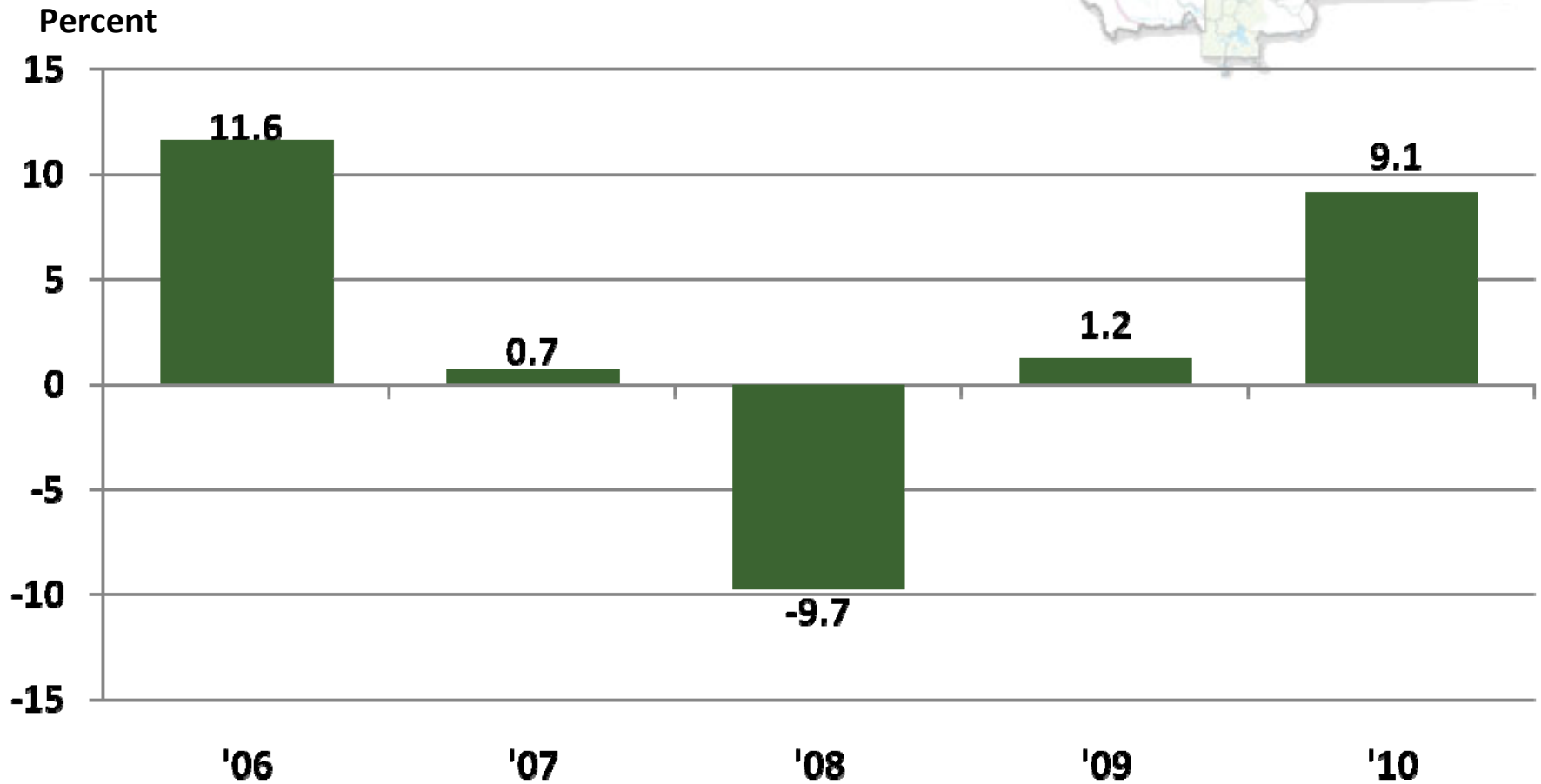


Nonfarm Employment (Seasonally Adjusted), Cascade County

Recession Declared, Dec. 2007



Annual Percent Change in Construction Labor Income (in Constant Dollars), Cascade County



Cascade County's Economic Base 2008-2010

- Other 6%
- Transportation 6%
- State Gov't and Higher Ed. 6%
- Manufacturing 6%
- Trade Center - Other 8%
- Trade Center - Health 11%
- Federal Civ. 10%
- Malmstrom AFB 47%

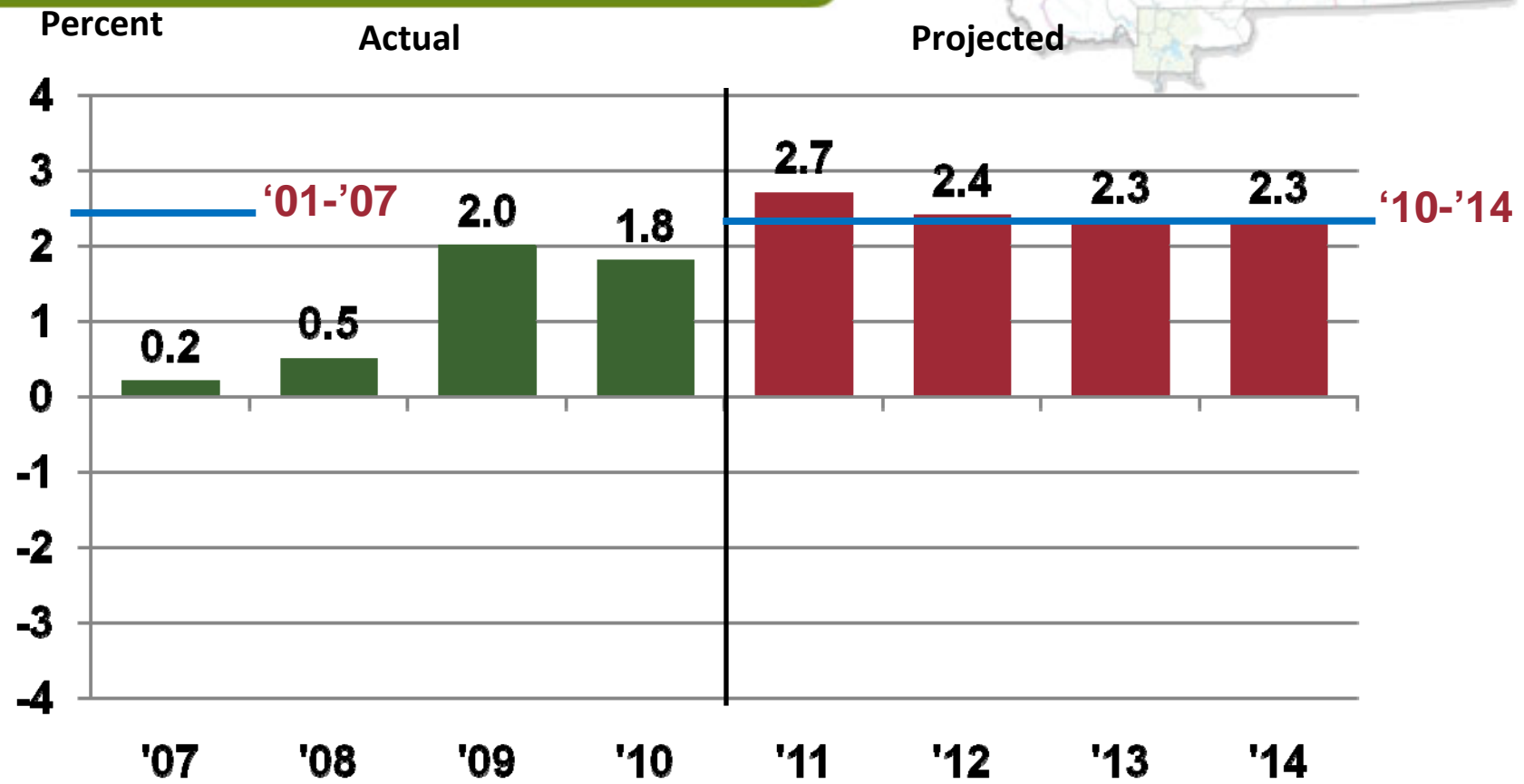
Construction

Slow Growth
 Modest Pay Increase
 Stable
 Stable
 ? Reform
 Stable at Best
 Stable, Air Guard?

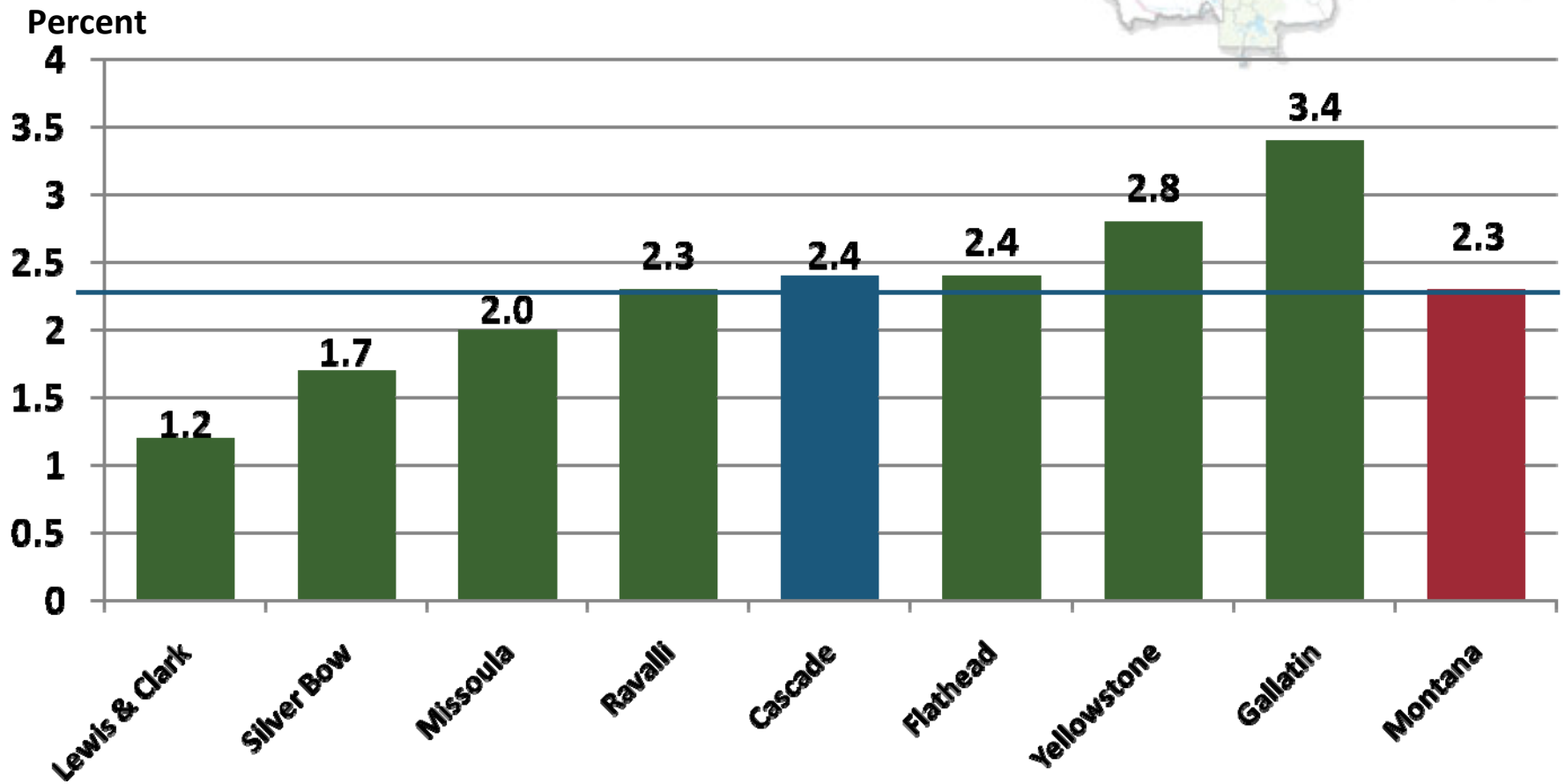
Slow Recovery



Actual and Projected Change in Nonfarm Labor Income, Cascade County, 2007-2014



Projected Annual Percent Change in Nonfarm Labor Income (in Constant Dollars) 2010-2014



Questions?