

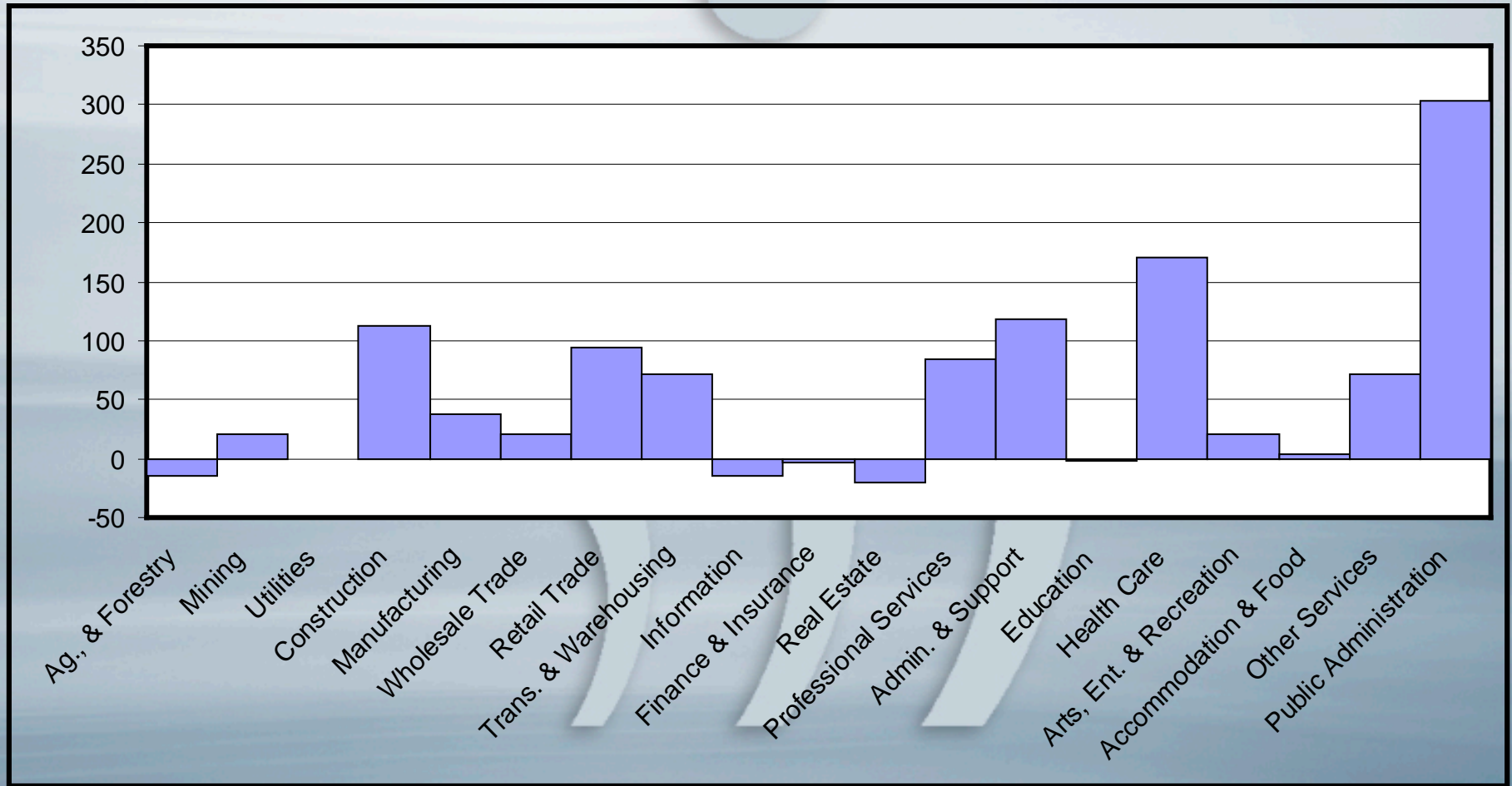
# Lewis & Clark County Economic Overview

By Brad Eldredge PhD  
Economist

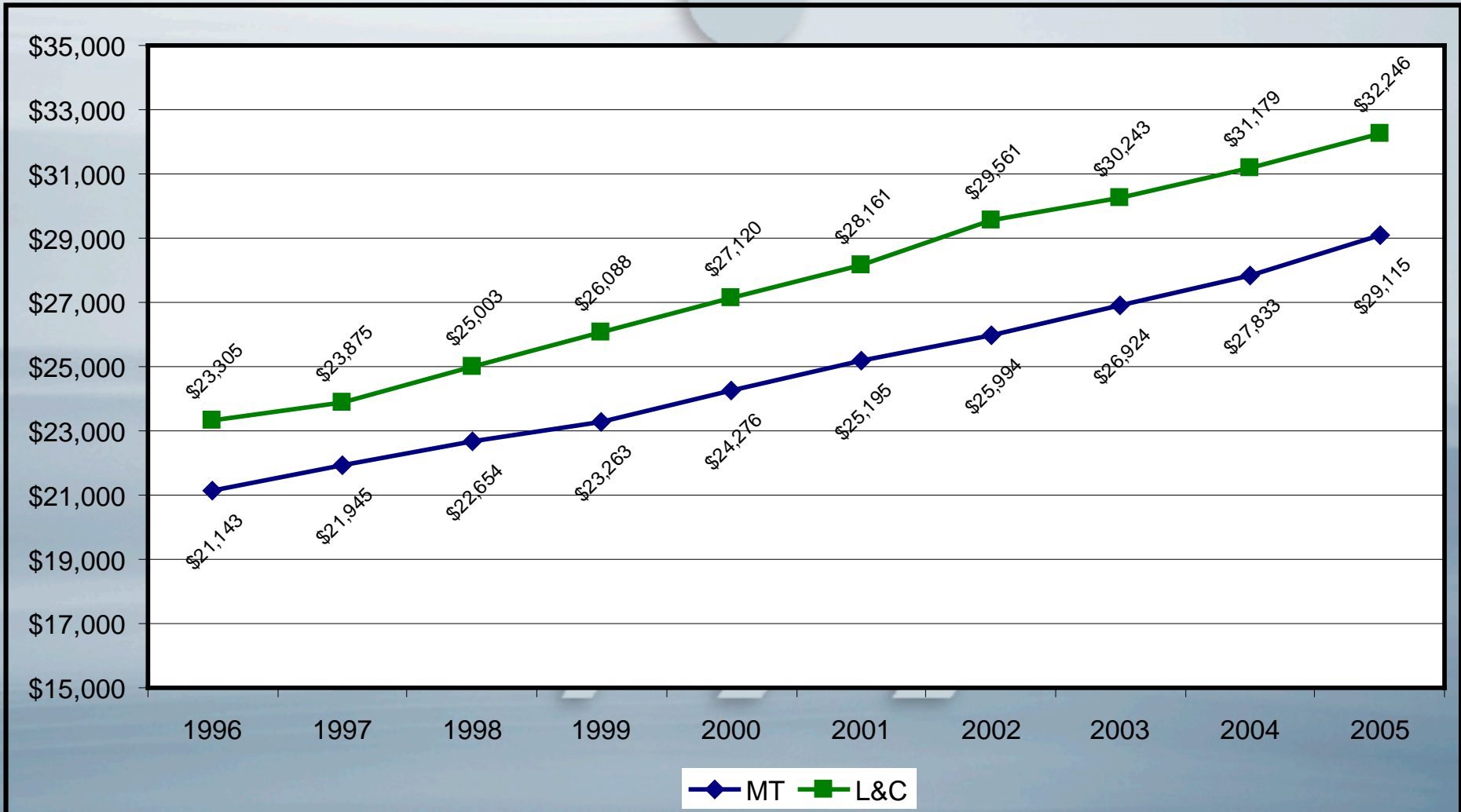
Research and Analysis Bureau  
MT Dept. of Labor and Industry

# Employment Growth by Industry

July. 2005 - June 2006 vs. July 2004 - June 2005



# Wage Growth



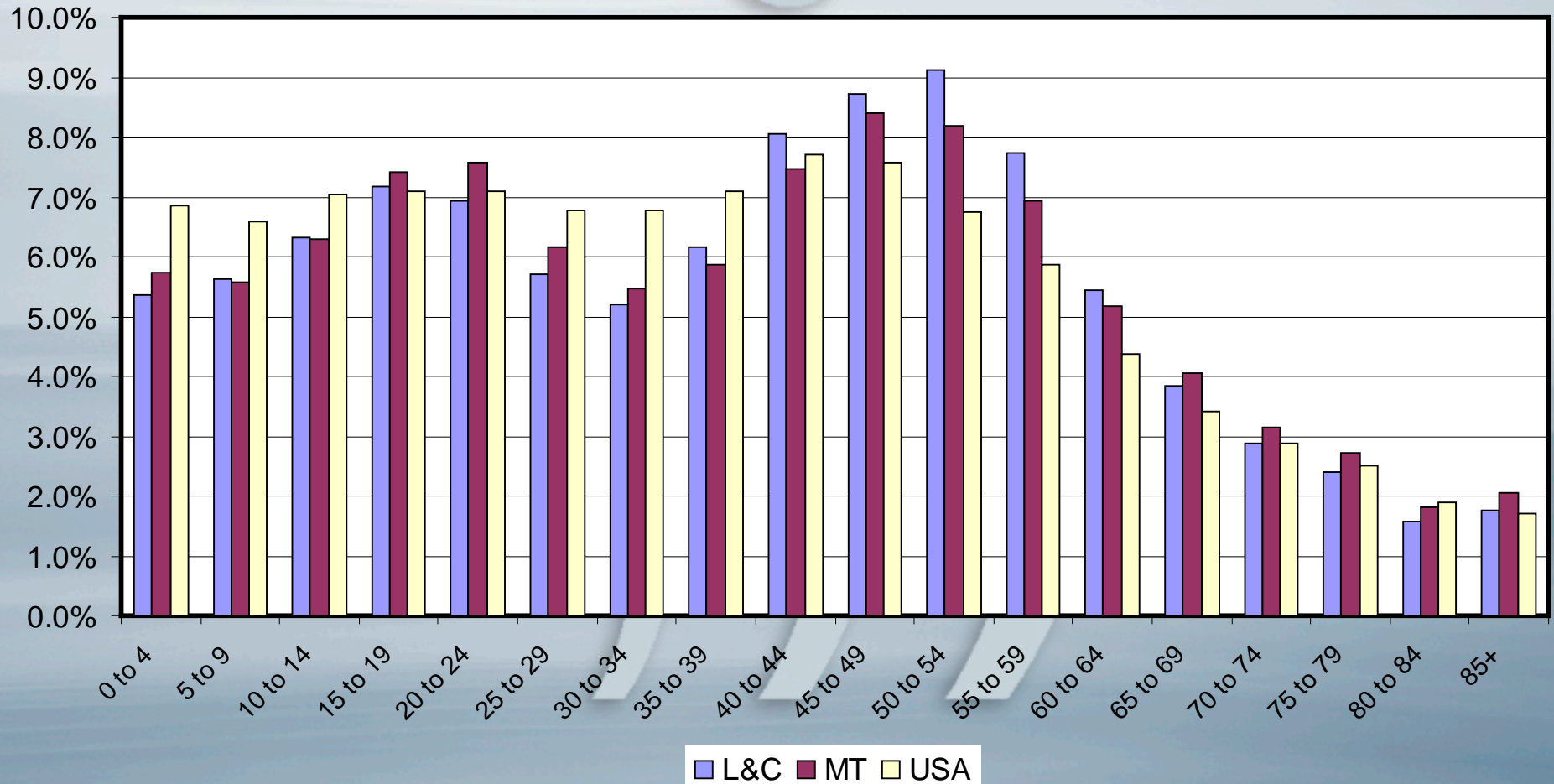
Source: Quarterly Census of Employment and Wages, BLS

# Unemployment Rates



Source: Local Area Unemployment Statistics, BLS

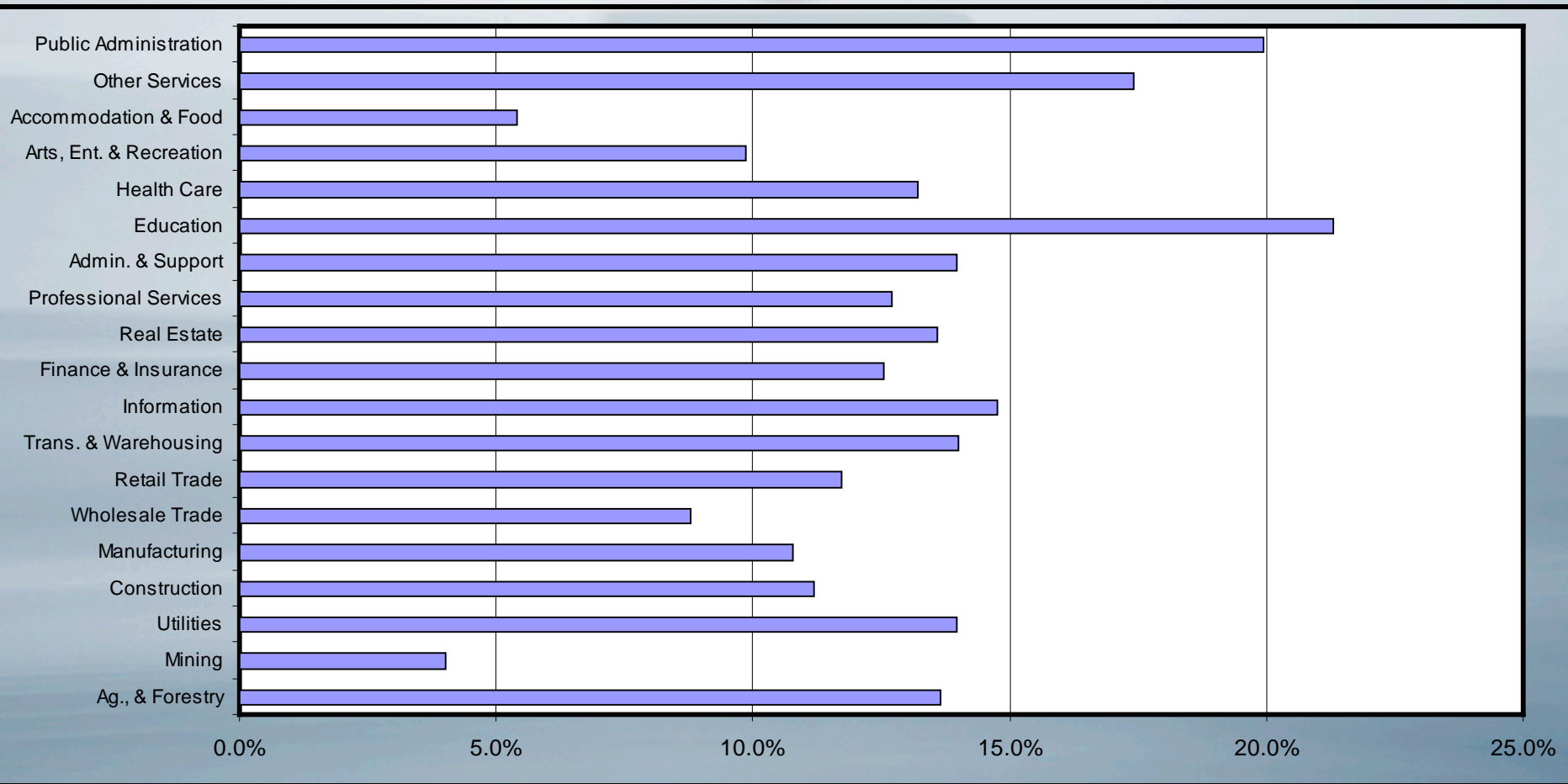
# Lewis and Clark Demographics



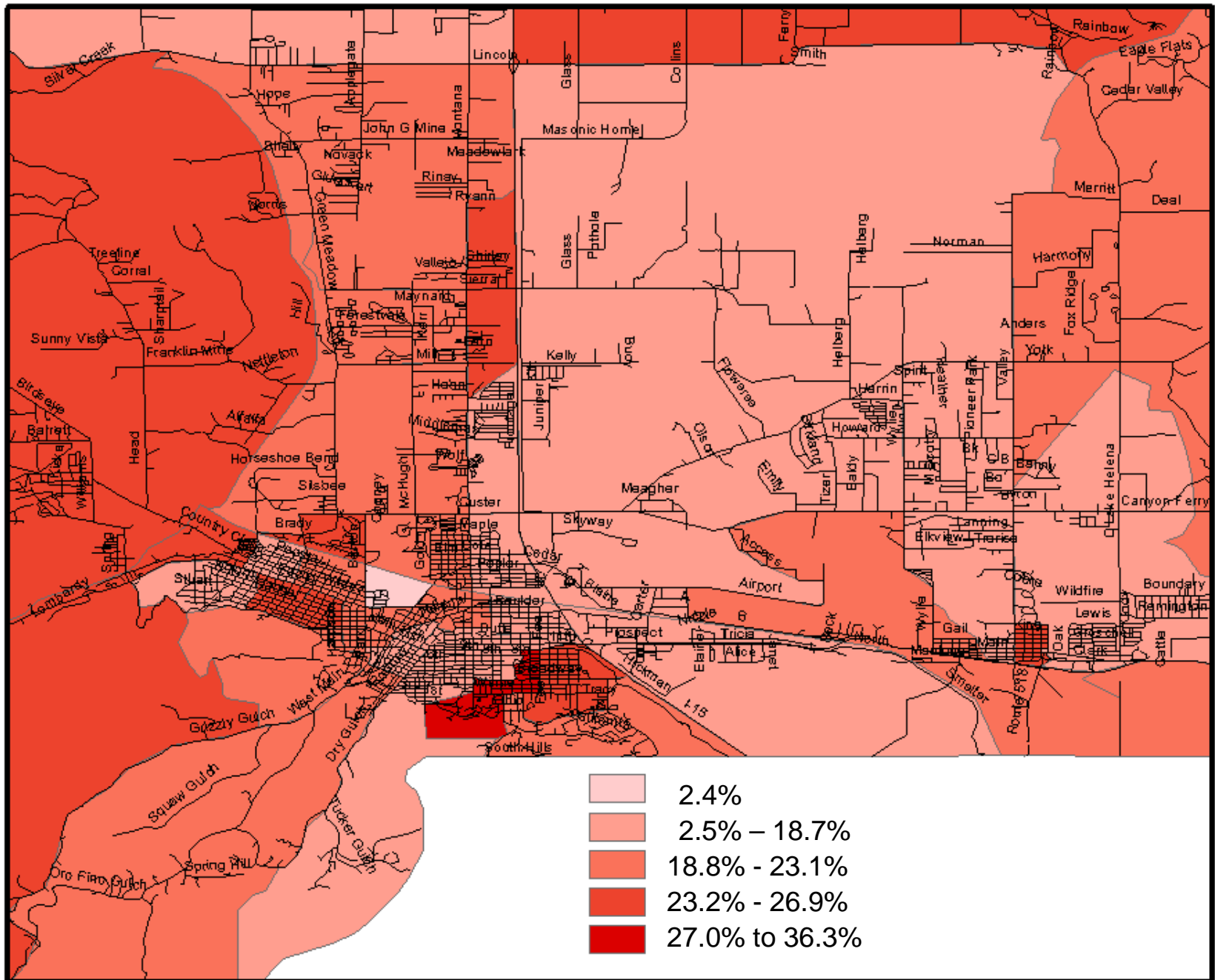
Source: Census Bureau, 2005 Population Estimates



# Percent of Workers 55-64 by Industry (2004)



Source: LEHD Program, Census Bureau and BLS



Source: Applied Geographic Solutions

# Conclusions

- L&C County is adding jobs at a faster pace than the state and nation
- L&C County Wages exceed the statewide average
- L&C unemployment is below the “full employment” level
- L&C County’s labor force will be impacted by the County’s demographics



# Contact Information



- [www.ourfactsyourfuture.org](http://www.ourfactsyourfuture.org)
- (406)444-5474
- beldredge@mt.gov