

2007 Montana Agricultural Outlook

George Haynes

Vincent Smith

David Buschena

Department of Agricultural Economic & Economics
and MSU Extension



Highlights

1. Agriculture Important to State Economy

- Farm and Ranch Cash Receipts are Generally over \$2 Billion Annually (\$2.7 Billion in 2005 and \$2.5 Billion in in 2004)

2. Montana Farm Products

- Wheat & Cattle 75% to 80% of Cash Receipts



Highlights

3. Farm numbers changing

- 28,000 farms
 - 5,000 with gross sales > \$100,000

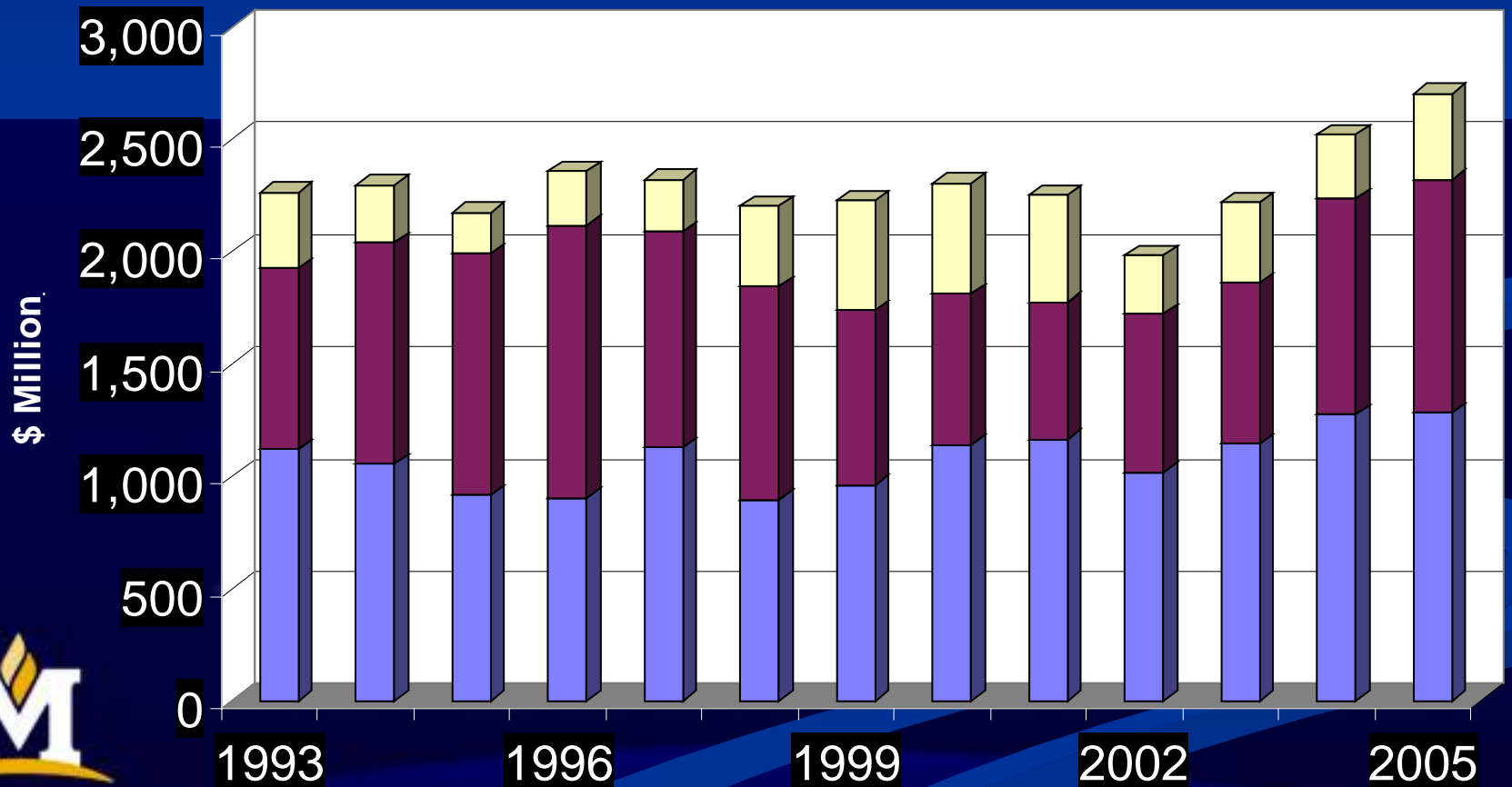
4. High Volatility in Cash Receipts Due to Weather and Prices

5. The 2007 Farm Bill is on the horizon.



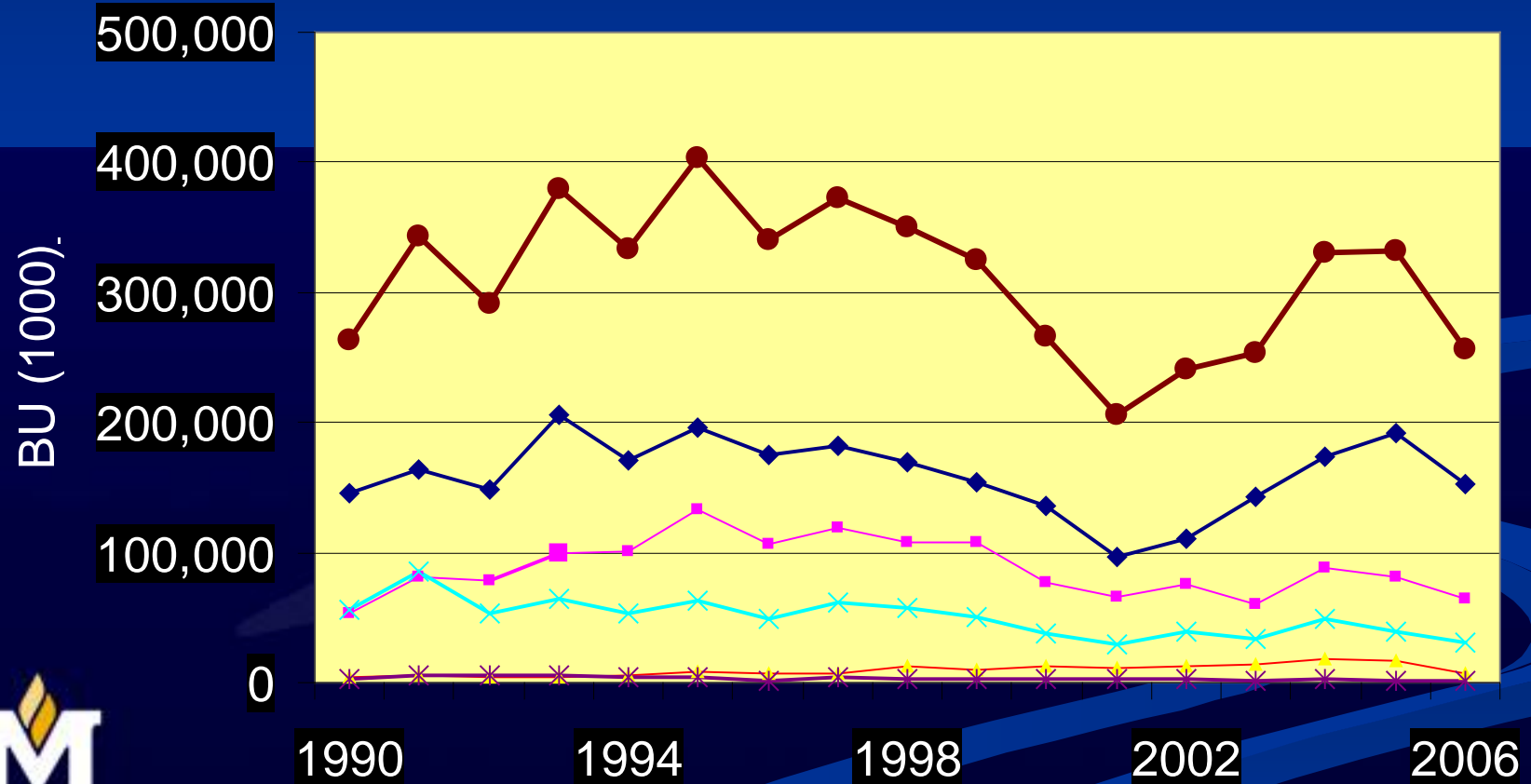
Cash Receipts and Government Payments, Montana 1993 - 2005

■ Livestock ■ Crops ■ Government

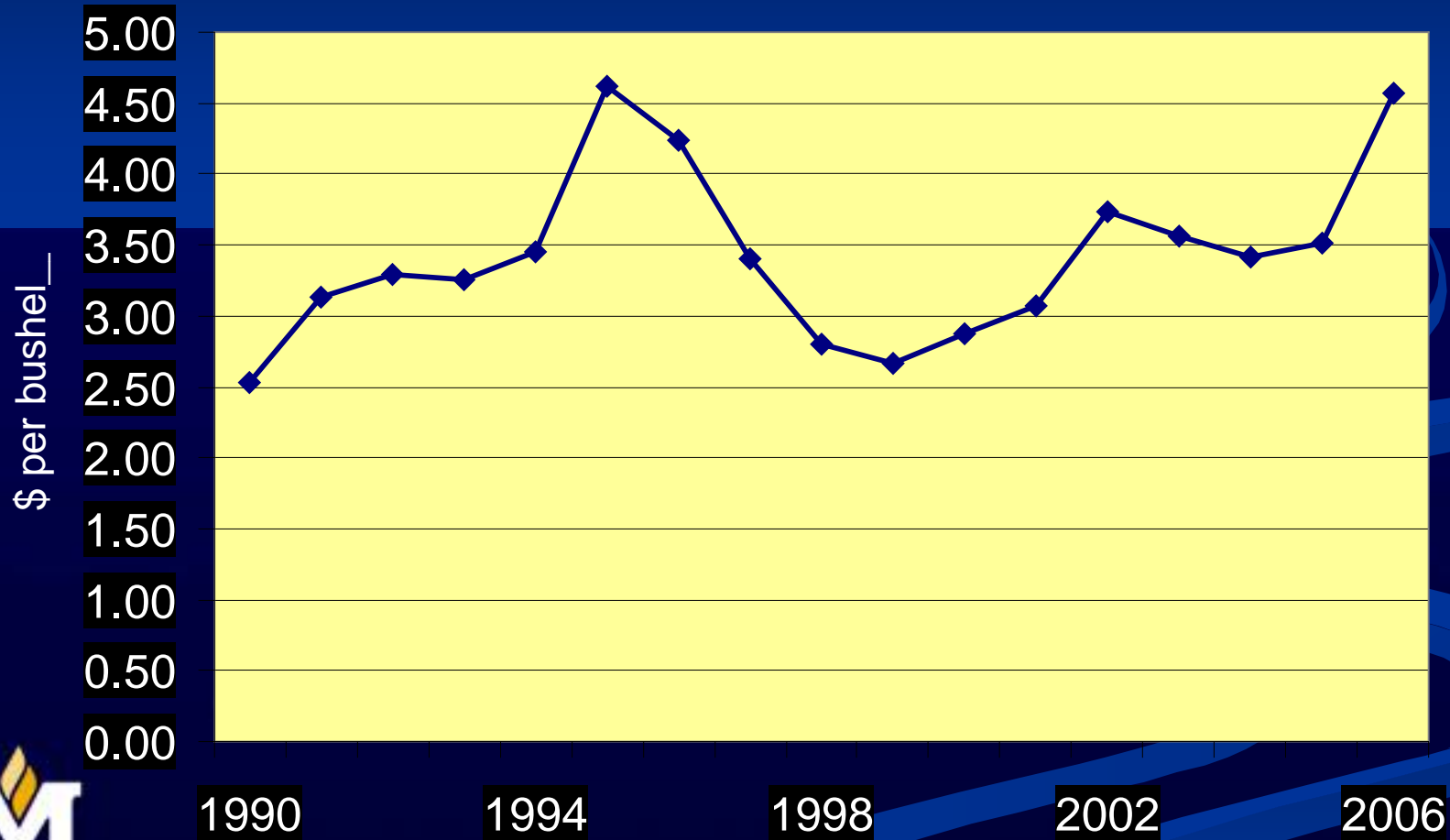


Production, All Grains

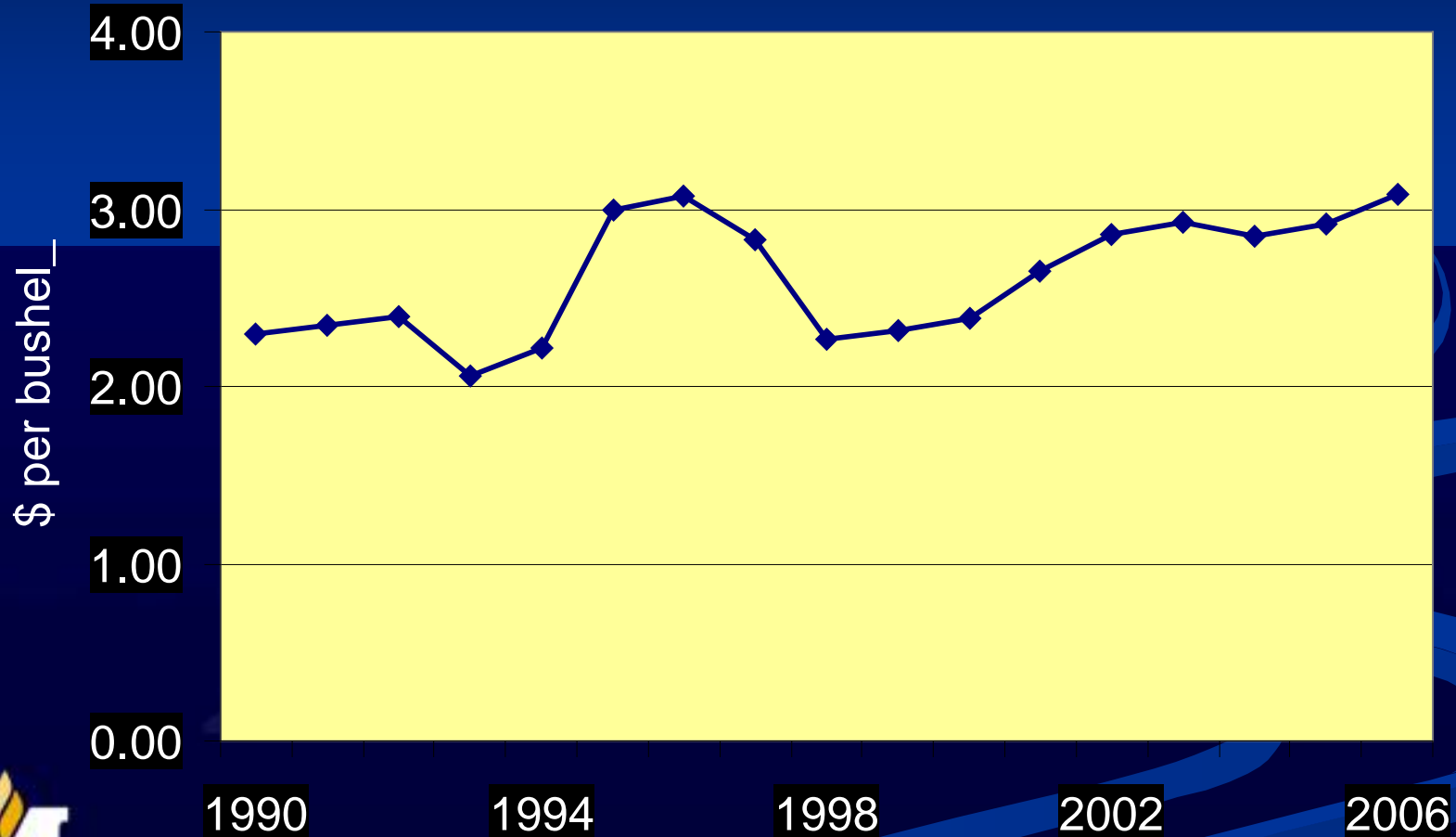
◆ Winter Wheat ■ Other Spring Wheat ▲ Durum × Barley * Oats ● Total



Winter Wheat Prices 1990 – 2006 (Oct)



All Barley Prices 1990–2006



Futures Prices

| Location | 03/07 | 07/07 | 09/07 | 12/07 |
|----------------------------|-------|-------|-------|-------|
| Minneapolis Grain Exchange | | | | |
| Hard Red Spring Wheat | 509 | 519 | 523 | 530 |
| | | | | |
| Kansas City Board of Trade | | | | |
| Wheat | 493 | 497 | 501 | 509 |
| | | | | |
| Chicago Board of Trade | | | | |
| Corn | 408 | 426 | 402 | 392 |
| | | | | |
| | | | | |
| | | | | |



MT Crop Summary - what a year!

■ Winter wheat

- 13% below 2005 (82.6 m. bushels)
 - Fewer acres seeded
 - Hot/dry weather

■ Spring wheat

- 22% below 2005 (63.8 m. bushels)
 - More acres seeded
 - Hot/dry weather



Global Wheat Market Production Shares

| Country | 2005/06 | shares | 2006/07 | shares |
|--------------------|------------------------|--------|---------|--------|
| | (thousand metric tons) | | | |
| EU-25 | 122,638 | 19.8 | 117,887 | 20.1 |
| China | 97,450 | 15.7 | 103,500 | 17.7 |
| India | 68,640 | 11.1 | 68,000 | 11.6 |
| U.S. | 57,280 | 9.3 | 49,316 | 8.4 |
| Russian Federation | 47,700 | 7.7 | 41,500 | 7.1 |
| Canada | 26,775 | 4.3 | 26,300 | 4.5 |
| Australia | 24,500 | 4.0 | 11,000 | 1.9 |
| | | | | |
| | 173,938 | 28.1 | 167,639 | 28.6 |



Global Wheat Market

■ World Forecast

- **2006 Wheat Production → 14% Lower than 2005**
 - Wheat prices are 20% higher in 2006
- **Global Ending Wheat Stocks – lowest since 1981/82**
 - Down 27% from 2005/06 (119 million tons)
- **Feed Grain Production – remained stable worldwide, *however* US stocks are at a 10 year low**



Developments in International Trade

- **The WTO Trade Talks in Geneva were suspended**
- **Continued Movement Towards Free Trade**
 - **Goal** - *'substantially improve' market access in agriculture through programs of fundamental reform and by reducing barriers to industrial goods.*
- **Exports/Imports**
 - **Exports of wheat have remained stable**
 - 26 million metric tons
 - **Exports of coarse grains have increased by nearly 20%**



Montana Wheat Outlook (USDA)

- *2006 Production → 153 million bushels*
- *2007 W. Wheat Plantings → up by 10 percent*
 - *US crop conditions are average to good*
 - *MT crop conditions are adequate (slightly lower than last year)*
- *2007 Production (Forecast) → ???*
 - *MT 2006 All Wheat Price: \$4.50 +*
 - *US 2007 All Wheat Price: higher*



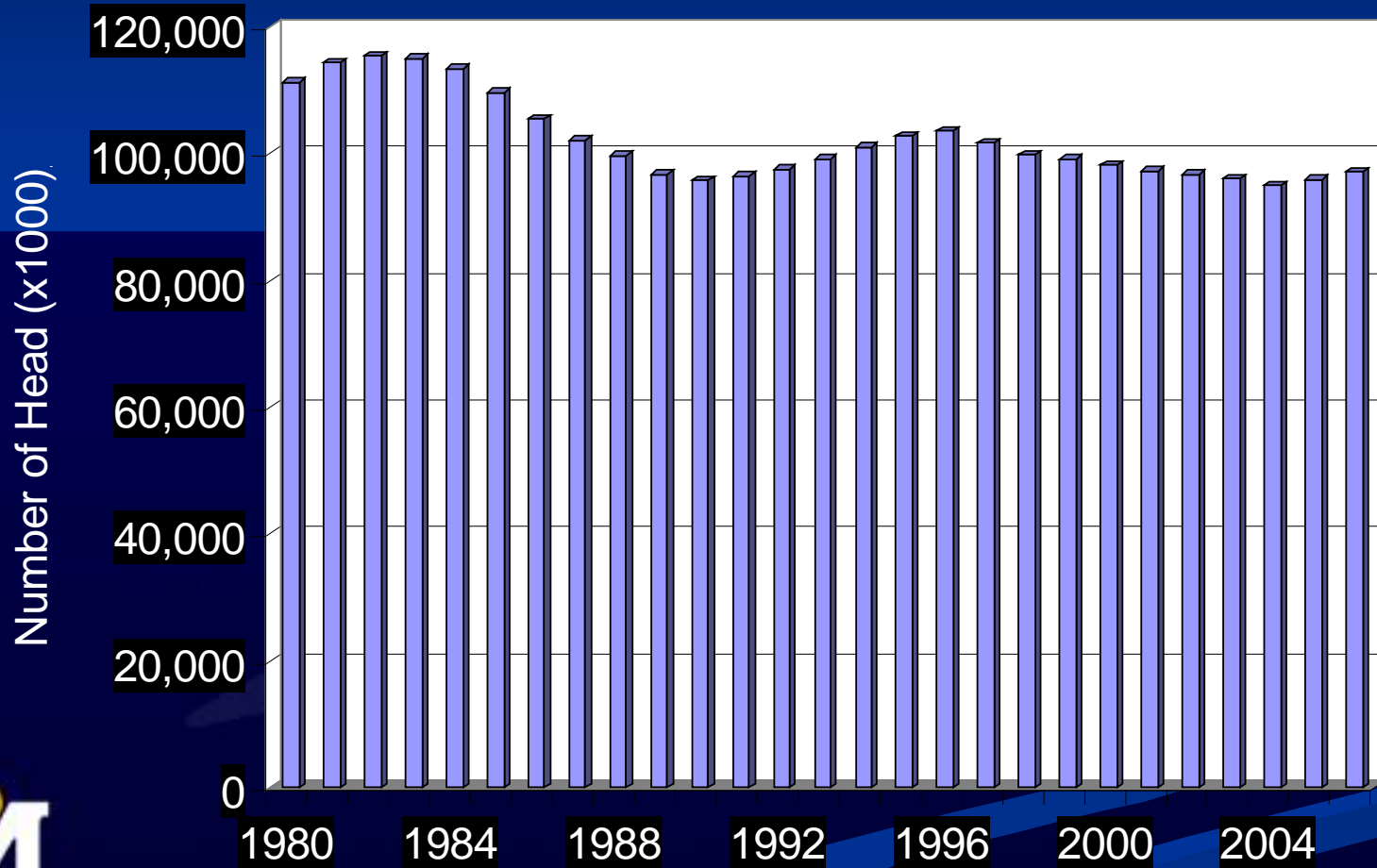
Cattle Outlook



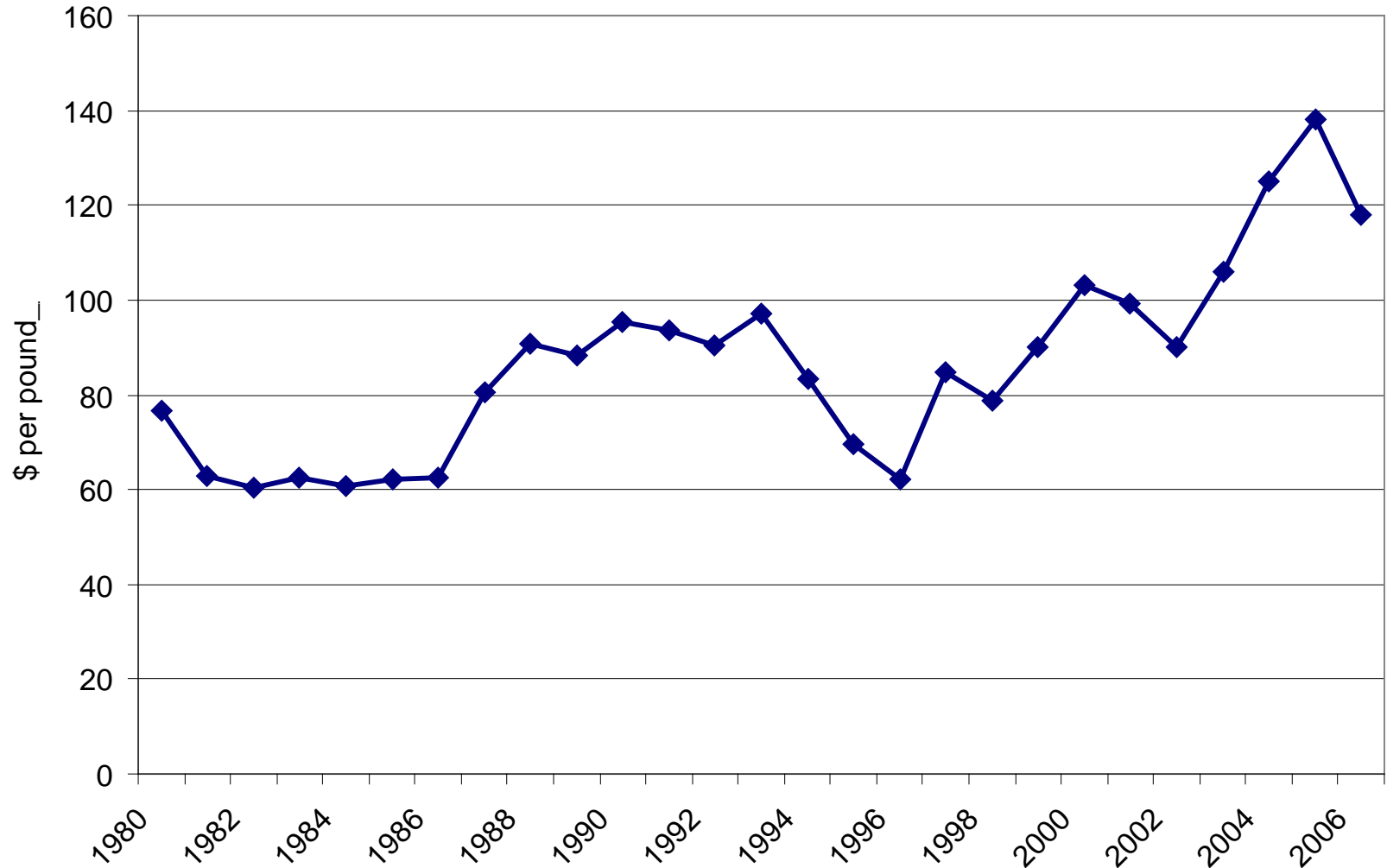
MONTANA STATE UNIVERSITY

Mountains & Minds

US Cattle Inventory (Jan. 1)



Montana Calf Prices



Futures Prices

| Location | 04/07 | 08/07 | 10/07 |
|-----------------------------|-------|-------|-------|
| Chicago Mercantile Exchange | | | |
| Live Cattle | 94.30 | 88.00 | 90.50 |
| Feeder Cattle | 92.50 | 98.40 | 99.00 |



Cattle Outlook

■ 2006

- Cash receipts from beef production increased slightly (from \$49.2 b. to \$49.7 b.) in US
 - Export demand is expected to increase mainly in Mexico, Canada and Japan
- Higher feed grain prices put downward pressure on feeder/stocker cattle prices
 - Ethanol effects
 - Higher demand for corn



Cattle Outlook

■ 2007

- Prices - ???
 - Beef exports are expected to increase
 - More than 1.5 billion pounds, if Canada, Mexico, Japan & S. Korea increase imports
 - Still lag far behind 2.5 billion pounds of 2003
 - High corn prices
 - Cattle on feed (higher than expected)
 - Consumer demand (steady to lower)



Farm Bill 2007

- Total government payments to producers are likely to remain stable, however . . .
 - vegetable and fruit producers will be competing for payments
 - more emphasis on conservation programs (CRP, CSP and cost share programs)
 - more emphasis on risk management and insurance
 - disaster payments are looming



Questions

???

