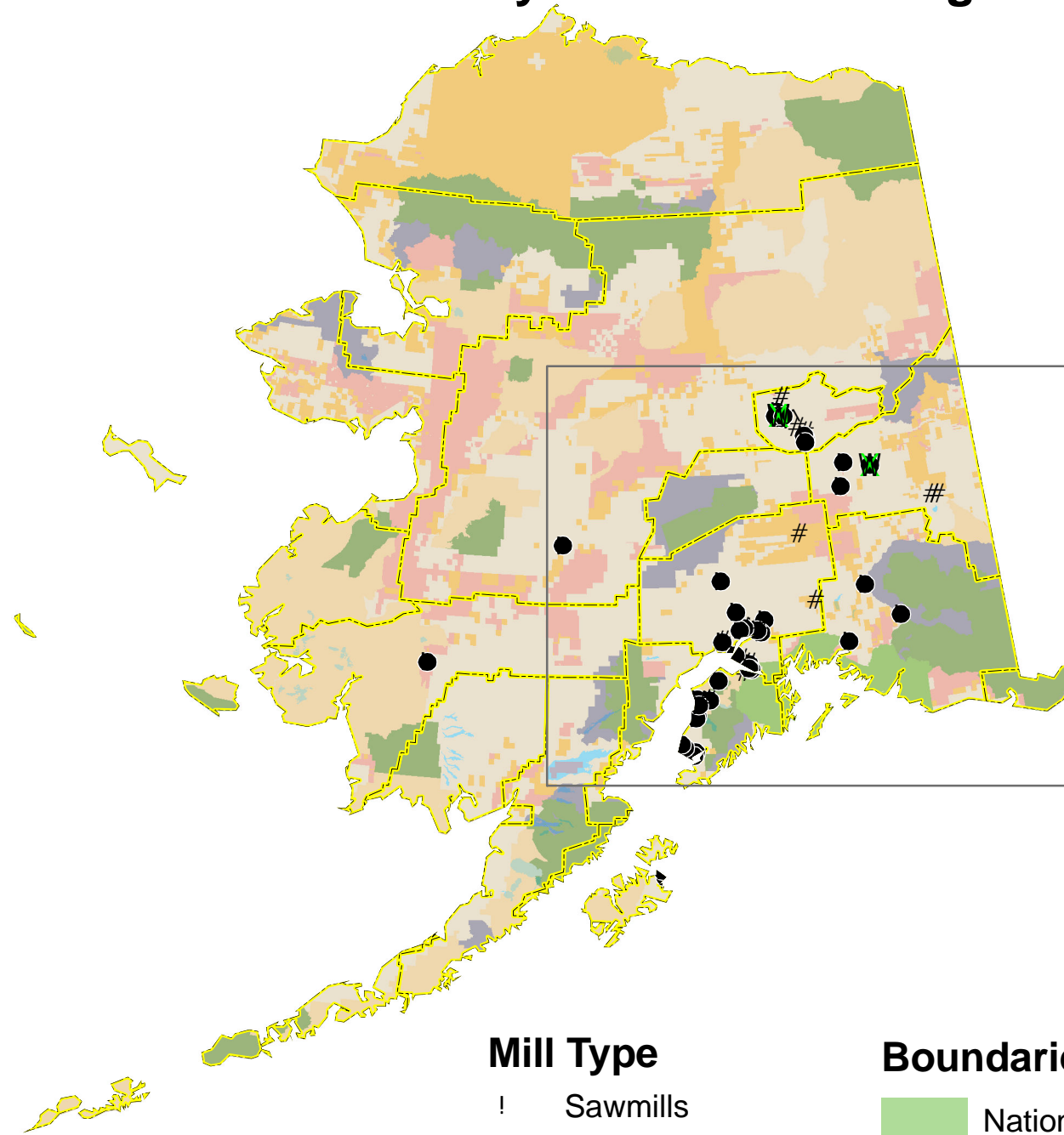
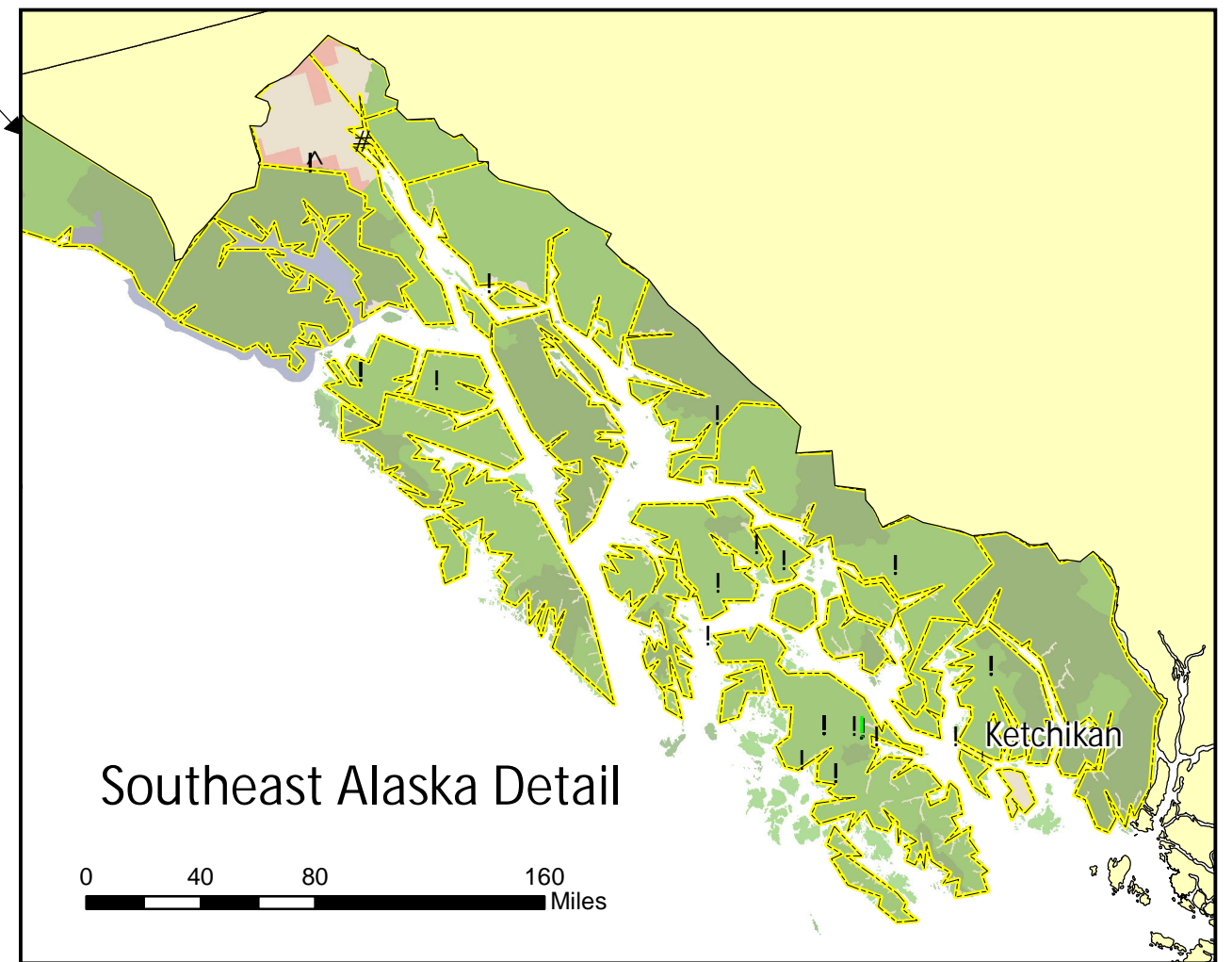
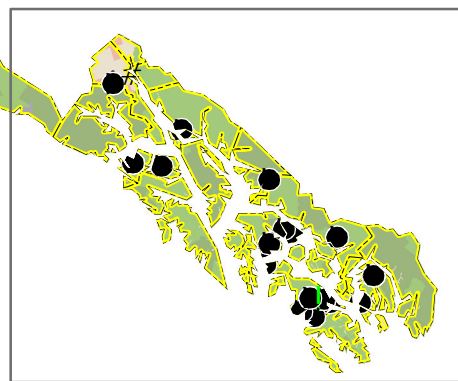
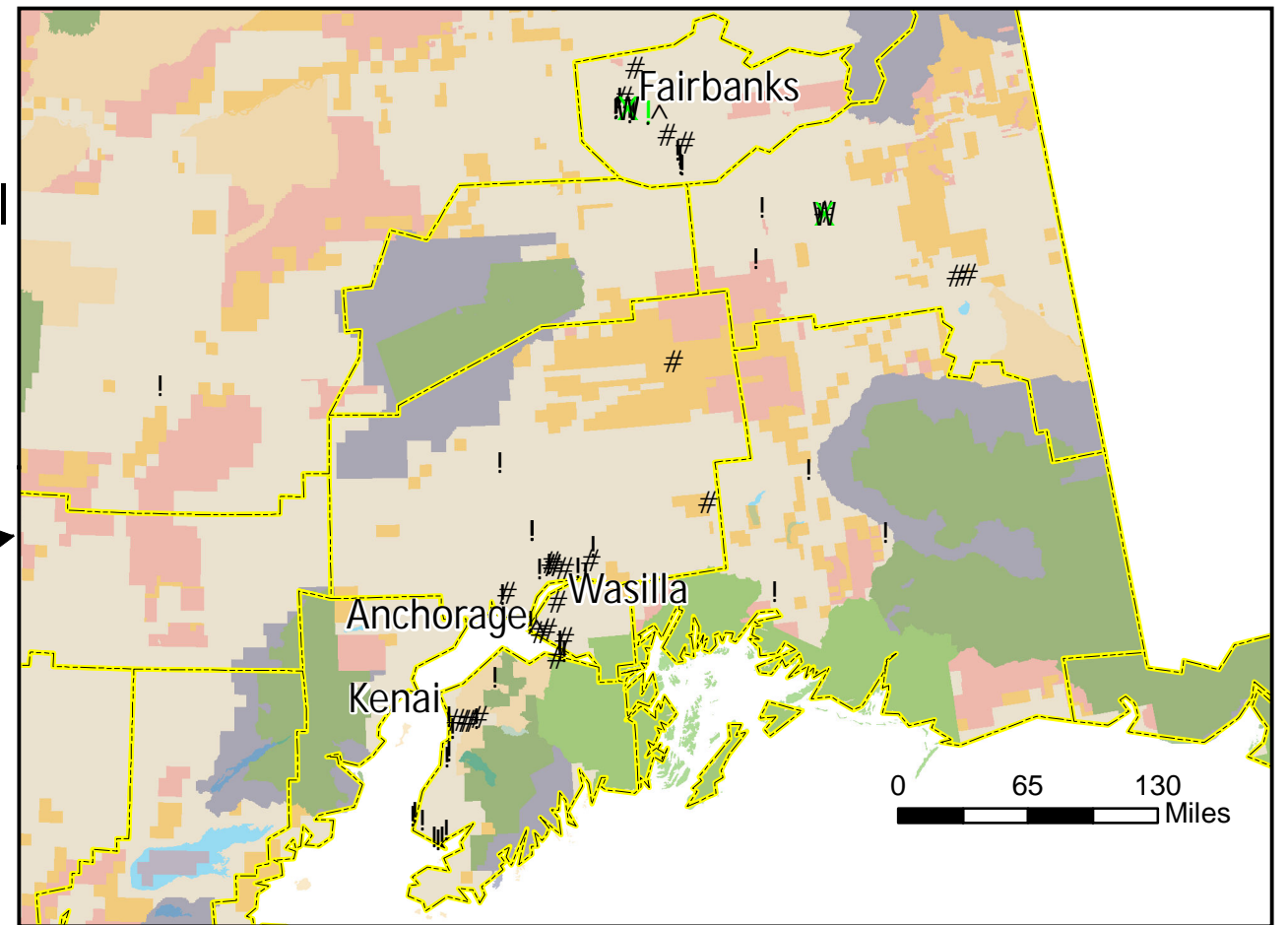


# Alaska Primary Wood Processing Facilities, 2010



South-Central and Interior Alaska Detail



## Mill Type

- ! Sawmills
- # House log/Log home
- ^ Log Furniture
- W Biomass/Wood Pellet
- ! Other mills

## Boundaries

- National Forest FS
- National Park Service
- National Wildlife Refuge FWS
- National Petroleum Reserve
- Public Domain Land BLM
- Wilderness
- Boroughs

Projection: Alaska Albers  
 Coordinate System: NAD 1983 Alaska Albers  
 Data courtesy of ESRI, Inc.; Alaska State Geo-Spatial Data Clearinghouse  
 Cartographer: Chelsea P. McIver, Bureau of Business and Economic Research  
 Created: September 9, 2013