

New GO Building – Butte, MT



SouthWest MT and Silver Bow County

BBER Presentation

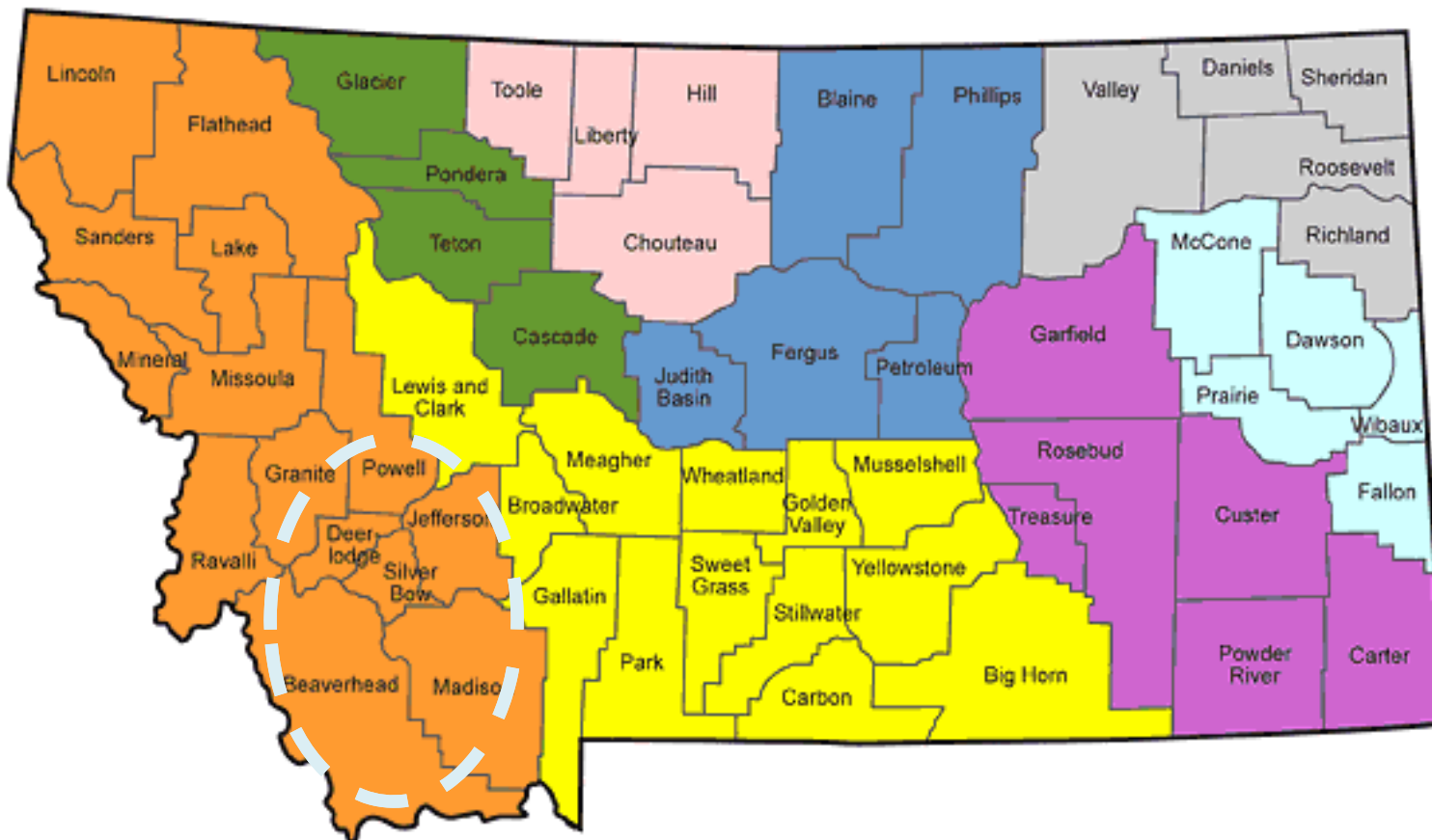
February 4, 2016

John Kasperick- Economist - NWE

NorthWestern[®]
Energy
Delivering a Bright Future



- **SouthWest MT includes Silver Bow and the 5 surrounding counties:**
 - Beaverhead; Deer Lodge; Jefferson, Madison, Powell, Silver Bow





SouthWest MT – Population/Demographics

- **2014 Census Estimated Population in SW MT = 79,462**
 - Slower population growth and older population base than statewide average

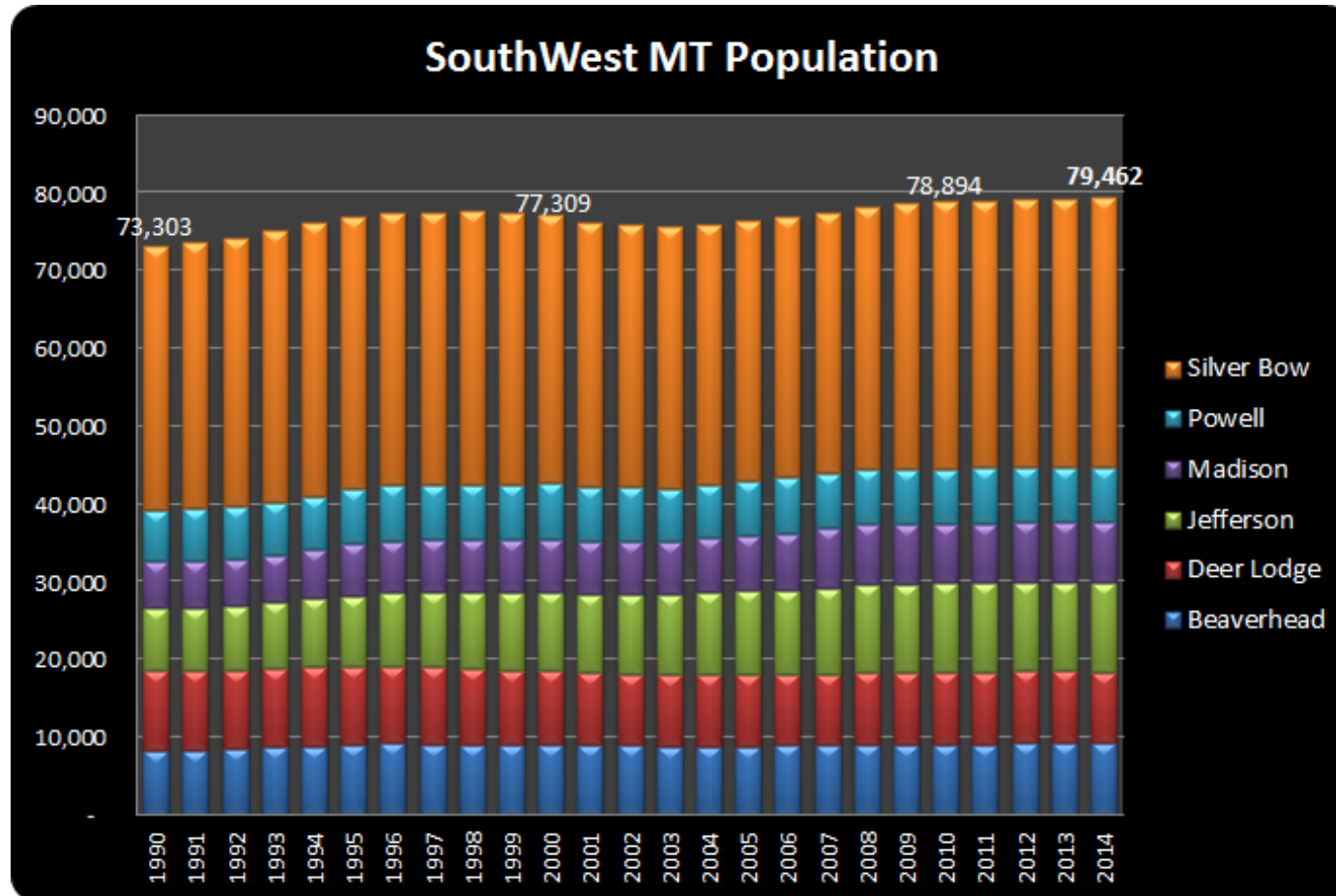
	Beaverhead	Deer Lodge	Jefferson	Madison	Powell	Silver Bow	SW MT	Montana
2014 Population	9,345	9,150	11,558	7,820	6,909	34,680	79,462	1,023,579
Rank of 56 Counties	23rd	26th	17th	27th	29th	8th	7.8%	
Male	4,662	4,837	6,001	4,048	4,274	17,681	41,503	514,181
Female	4,683	4,313	5,557	3,772	2,635	16,999	37,959	509,398
% Male	49.9%	52.9%	51.9%	51.8%	61.9%	51.0%	52.2%	50.2%
20 yrs and less	2,355	2,157	2,880	1,619	1,290	8,963	19,265	271,354
21 - 49 years	3,069	2,936	3,377	2,150	2,695	12,171	26,397	364,827
50 - 64 years	2,198	2,285	3,384	2,233	1,712	7,843	19,655	226,509
65 and greater	1,723	1,772	1,916	1,819	1,212	5,703	14,145	160,889
% 20 and under	25.2%	23.6%	24.9%	20.7%	18.7%	25.8%	24.2%	26.5%
% 21 - 49 years	32.8%	32.1%	29.2%	27.5%	39.0%	35.1%	33.2%	35.6%
% 50 - 64 years	23.5%	25.0%	29.3%	28.6%	24.8%	22.6%	24.7%	22.1%
65 and greater	18.4%	19.4%	16.6%	23.3%	17.5%	16.4%	17.8%	15.7%
Population Growth								
2010-14 %	1.1%	-1.6%	1.3%	1.7%	-1.7%	1.4%	0.8%	3.5%
2010-14 Increase	99	-148	152	129	-118	480	594	34,164
Rank of 56 Counties	34	45	29	25	46	27		
MT's Top 4 Counties		Richland	Wibaux	Sheridan	Gallatin		16 of MT's	
Fastest Growing 2010-14		18.8%	10.2%	9.2%	8.7%		56 Counties	
Increase		1,830	104	312	7,795		Lost Population	

Source: U.S. Census Bureau – census estimates



SouthWest MT – Population

- 2014 Census Estimated Population in SW MT = 79,462

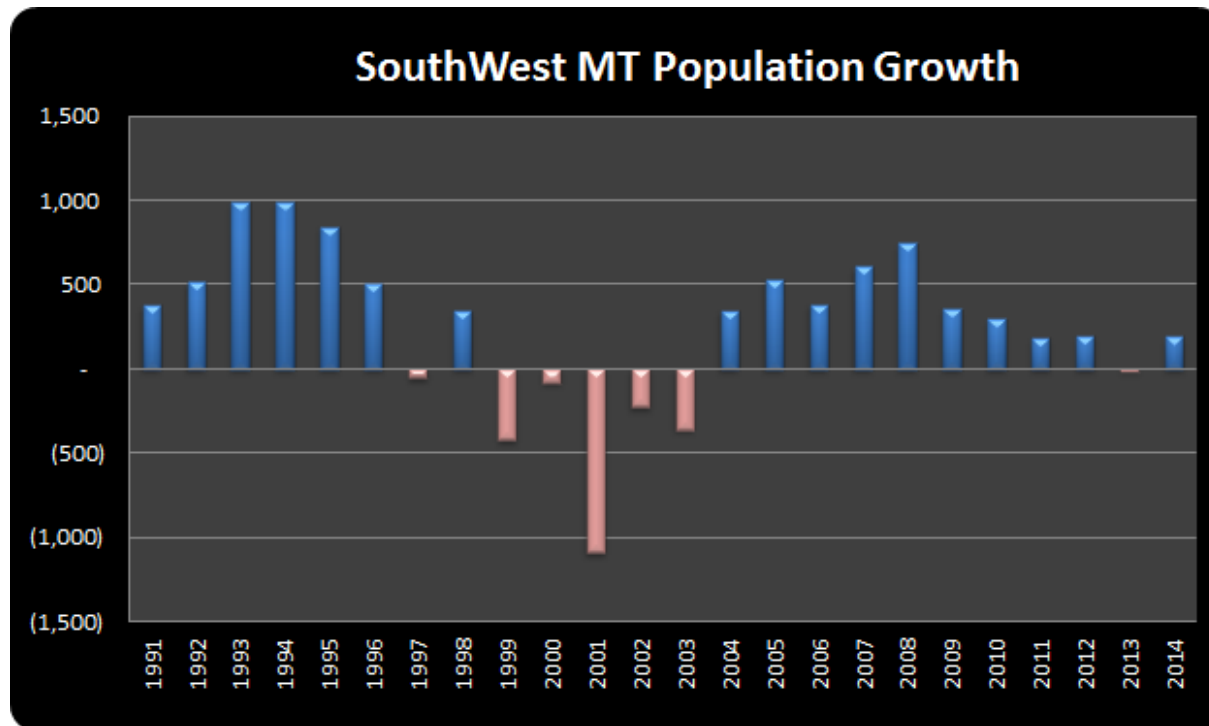


- Not as cyclical over last decade but very slow growth over last 5-years.



SouthWest MT – Population Growth

- SW MT added 6,200 people between 1990 and 2014



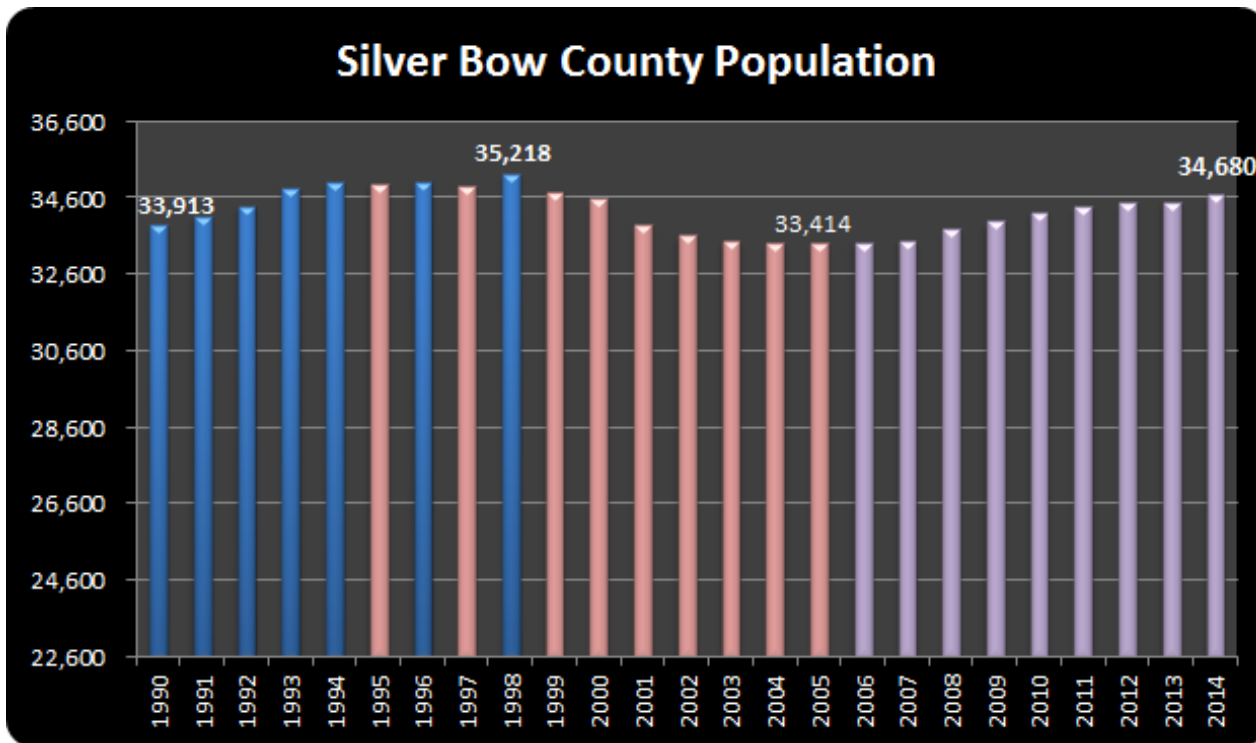
- Average growth 0.3% between 1990 and 2014
Statewide 1.0%/year
- Declines in late 1990's and early 2000's
- Good growth leading up to Great Recession
- Slow growth since 2008
- Jefferson and Madison counties have driven the historic growth

Population Growth				
	1990-00	2000-10	2010-14	1990-2014
Jefferson	2,060	1,358	152	3,570
Madison	876	813	129	1,818
Beaverhead	775	44	99	918
Silver Bow	658	(332)	480	806
Powell	563	(186)	(118)	259
Deer Lodge	(926)	(112)	(148)	(1,186)
SW MT	4,006	1,585	594	6,185



Silver Bow County – Population

- Silver Bow County added 800 people between 1990 and 2014



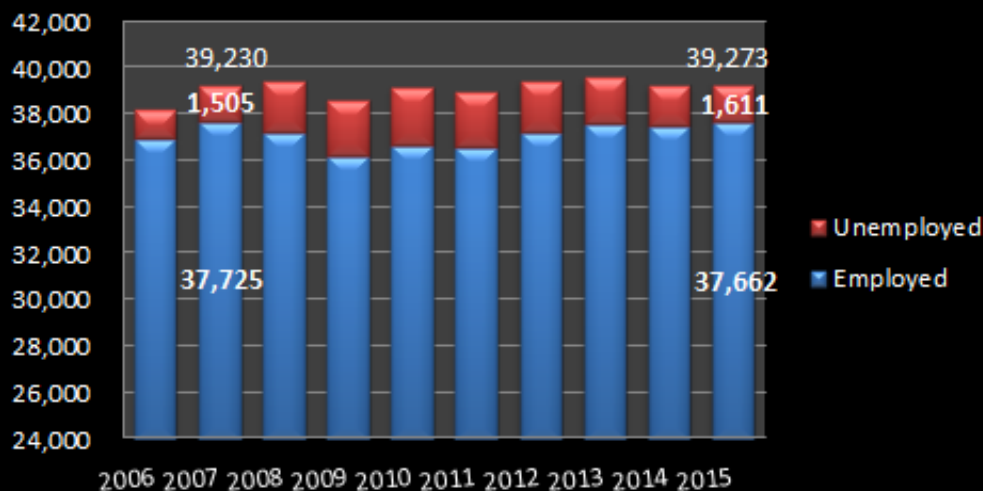
- Peaked at 35,218 people in 1998
- Reached low of 33,414 in 2005
- 9 consecutive years of slow growth (2006-14)
- 2014 estimate at 34,680
- 44% of SouthWest MT population in SBC

	2005	2006	2007	2008	2009	2010	2011	2012	2013	2014
Silver Bow	0.0%	0.1%	0.1%	1.0%	0.6%	0.7%	0.4%	0.3%	0.1%	0.5%
Inc/(Dec)	(2)	27	48	323	196	231	149	105	19	168
Montana	1.1%	1.3%	1.3%	1.2%	0.8%	0.7%	0.7%	0.8%	1.0%	0.9%



SouthWest Montana – Labor Force

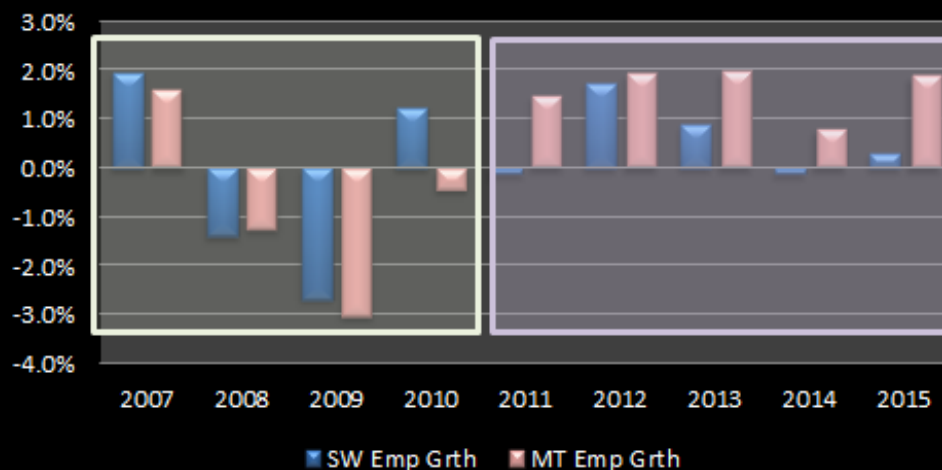
SouthWest Montana



- Total labor force (employed + unemployed) flat since 2007 at 39,200 people
- Between 2006-2010 employment fell 341 workers or 0.9%
- Between 2010-2015 employment increased 1,008 workers or 2.8%
- Employment flat 2013-2015

- SW MT performed better than overall statewide average during Great Recession
- Much slower growth than statewide average since 2011

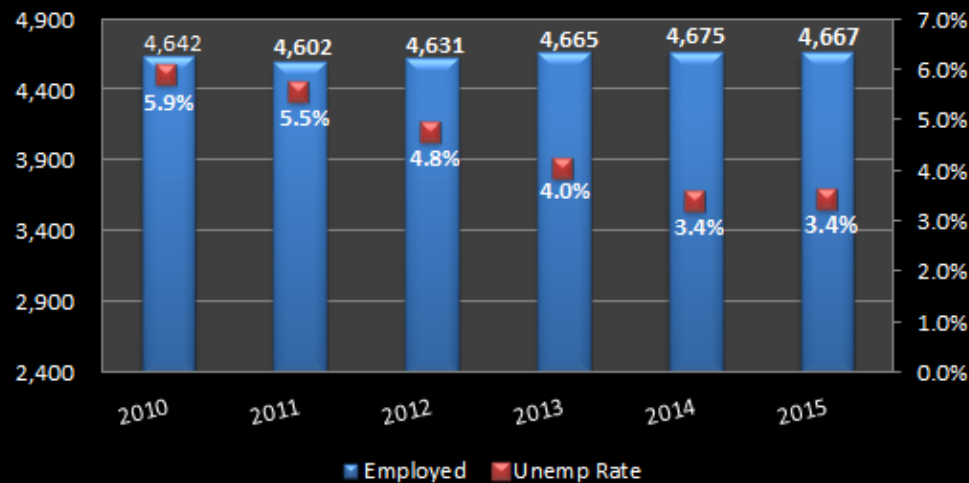
SW MT and MT Employment Growth





SouthWest Montana County – Labor Force

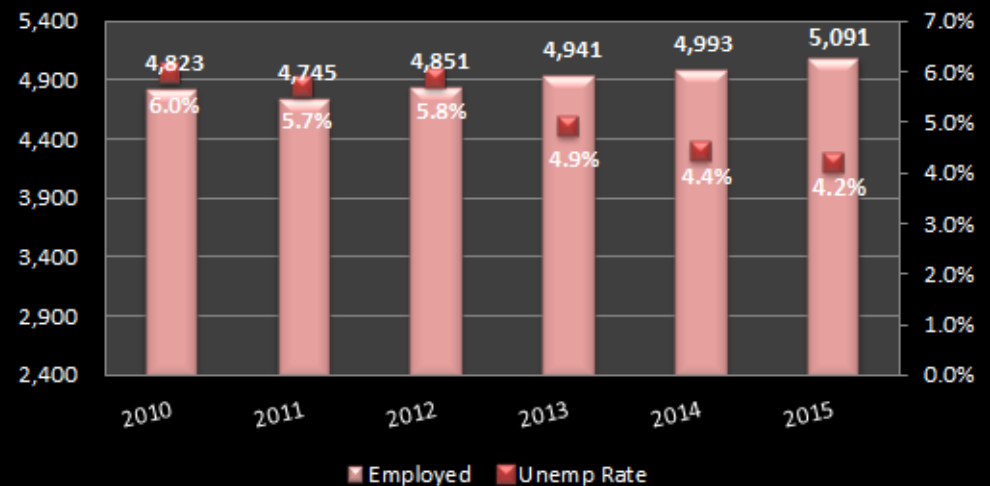
Beaverhead County



- Beaverhead employment flat since 2010
- Unemployment rate down from 5.9% to 3.4%
- Barrett Hospital, and U of M Western largest employers

- Deer Lodge employment up 5.6% or 268 workers since 2010
- Unemployment rate down from 6.0% to 4.2%
- Community Counseling, Community Hospital, Fairmont, and Aware largest employers

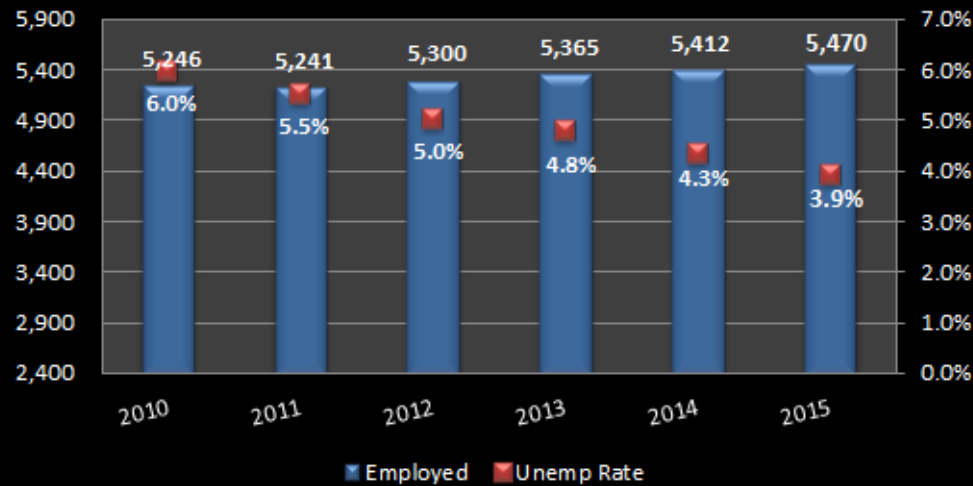
Deer Lodge County





SouthWest Montana County – Labor Force

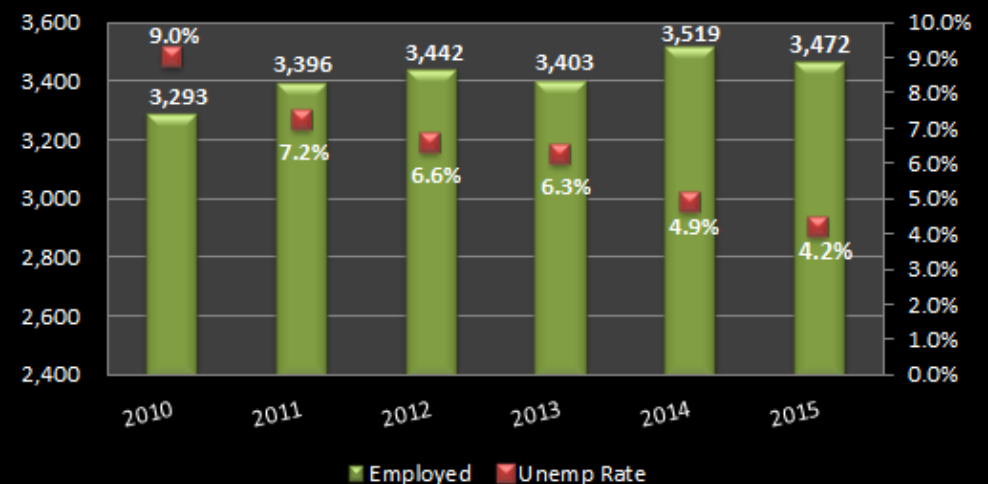
Jefferson County



- Jefferson employment up 4.3% or 224 workers since 2010
- Unemployment rate down from 6.0% to 3.9%
- Golden Sunlight largest employer - closure will impact area

- Madison employment up 5.4% or 179 workers since 2010
- Unemployment rate down from 9.0% to 4.2%
- Big Sky Resort, Yellowstone Club, and Moonlight Basin largest employers

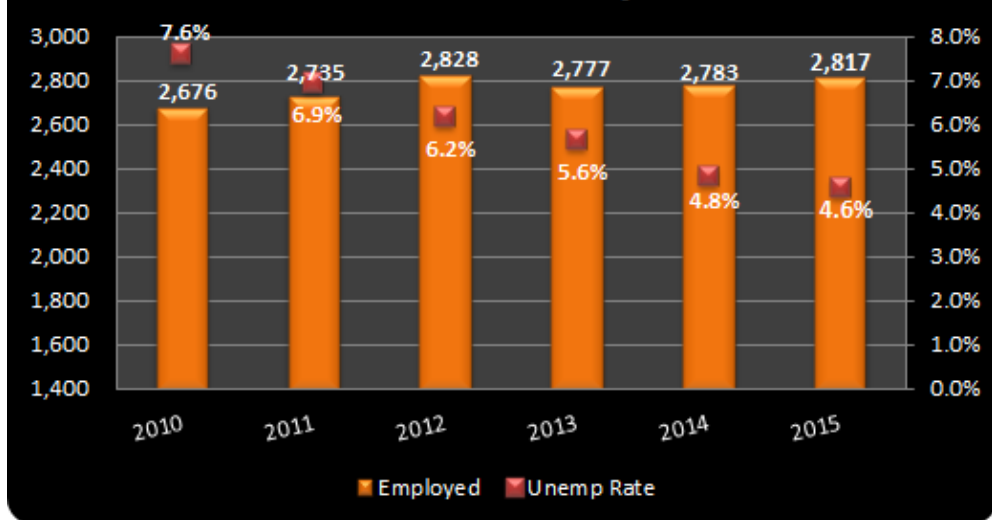
Madison County





SouthWest Montana County – Labor Force

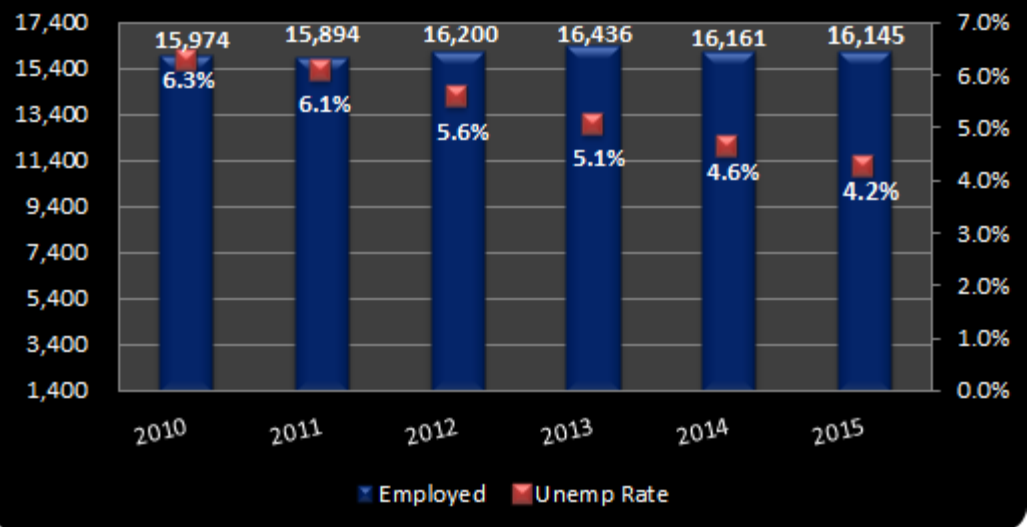
Powell County



- Powell employment up 5.3% or 141 workers since 2010
- Unemployment rate down from 7.6% to 4.6%
- State prison and Sun Mountain lumber largest employers

- Silver Bow employment up 1.1% or 171 workers since 2010
- Unemployment rate down from 6.3% to 4.2%
- St James, NorthWestern Energy, MRI, REC Silicon, MT Tech, Town Pump, Wal-Mart, Acadia, CCCS, Community Health largest employers

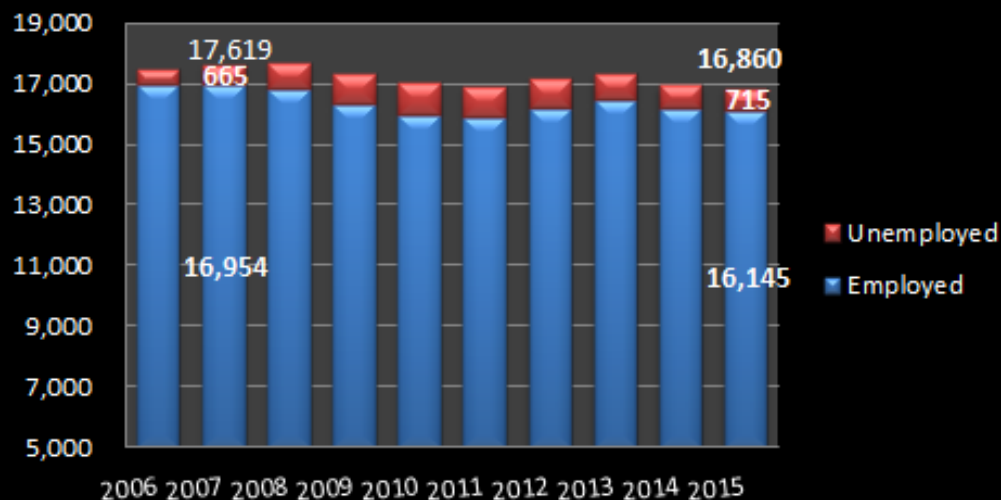
Silver Bow County





Silver Bow County Labor Force

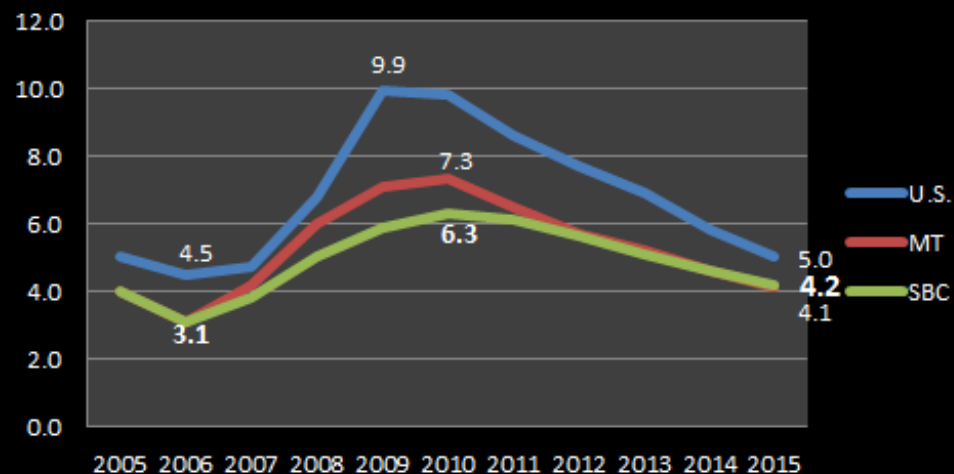
Silver Bow County Labor Force



- SBC labor force is down 750 from pre-recession level. Employment down 800 and unemployment up 50 workers
- Employment flat over past 4-years through 2015

- Both MT and SBC performed better than overall U.S. before, during, and following recession
- Silver Bow unemployment at 4.2% as of November 2015 – slightly above overall MT average

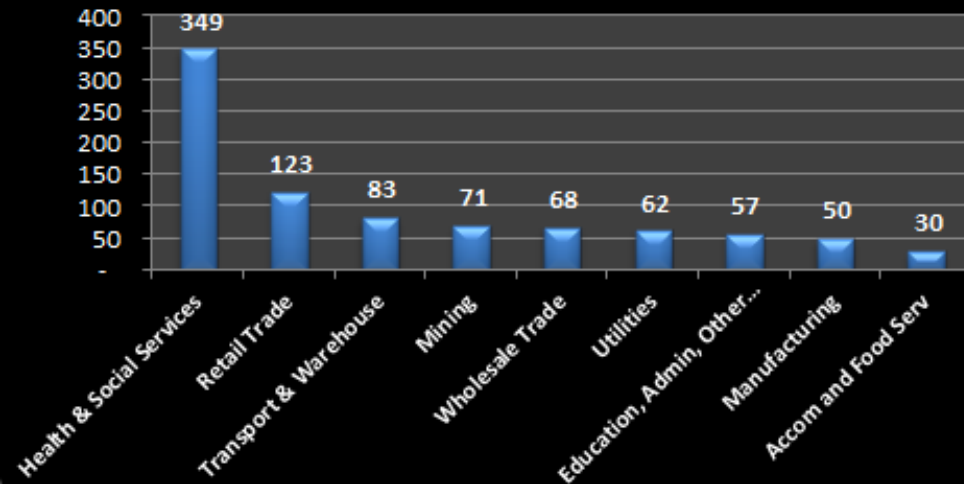
November Unemployment Rates





Silver Bow County Industry Employment

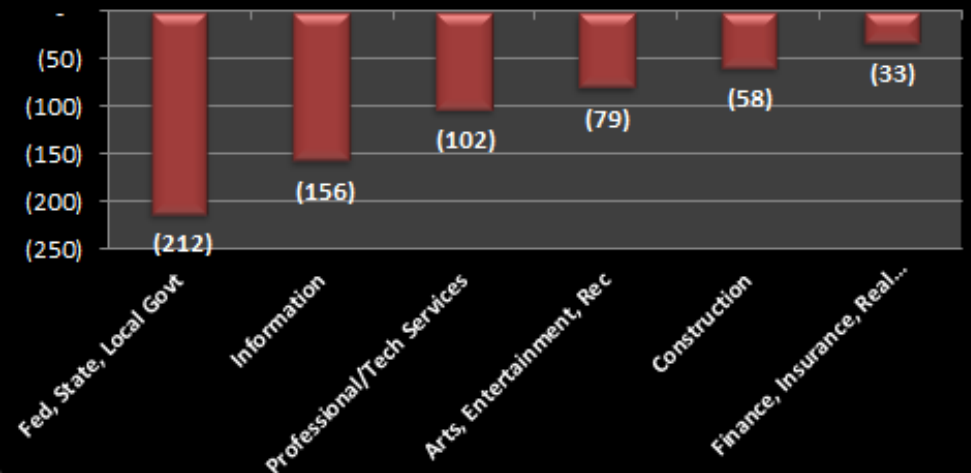
Silver Bow Increasing Industries 2010-15



- Overall diversification over the years has helped SBC maintain employment levels.
- Increases in health, trade, and others since 2010 offset declines in other industries.

- Declines in government sectors, information, professional services and other offset increases since 2010.

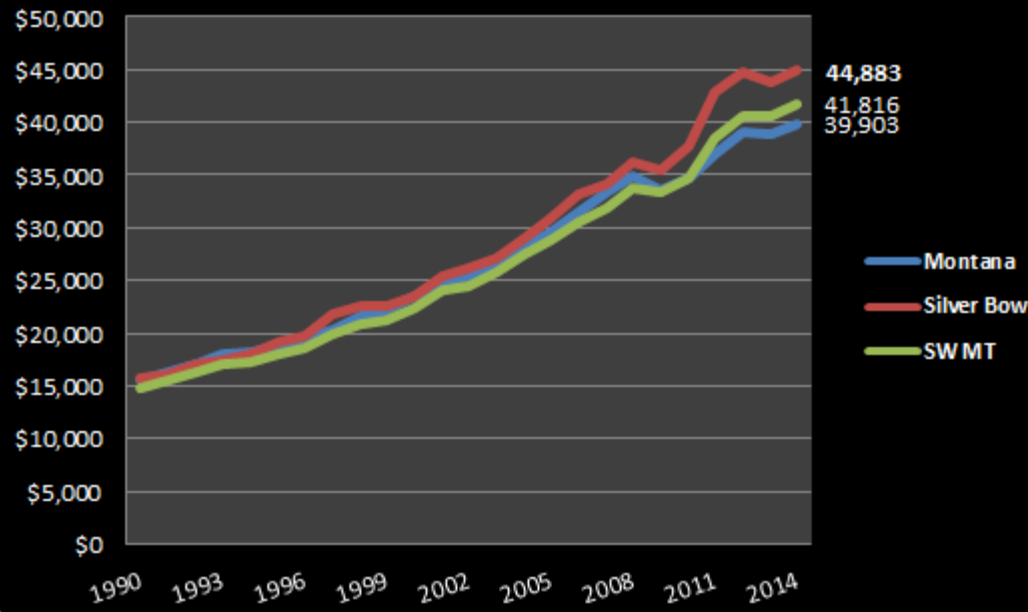
Silver Bow Decling Industries 2010-15





Earnings and Income

Montana, Silver Bow, SW Per-Capita Income



- Silver Bow has the 11th highest per-capita income among the 56 counties as of 2014
- Strong earnings from mining, utilities, health care, government, and manufacturing base industries
- Jefferson 10th highest. Will be impacted by Golden Sunlight.

Per-Capita Income	2014		56 County Rank	Annual Growth		
	2014	% State		1990-00	2000-10	2010-14
Montana	\$ 39,903	100.0%		4.2%	3.9%	3.5%
Jefferson	\$ 44,950	112.6%	10	4.1%	4.2%	3.6%
Silver Bow	\$ 44,883	112.5%	11	4.1%	4.7%	4.4%
Madison	\$ 44,357	111.2%	12	4.2%	5.1%	6.4%
Beaverhead	\$ 38,297	96.0%	33	3.8%	3.5%	5.4%
Deer Lodge	\$ 34,257	85.9%	46	4.8%	3.8%	3.5%
Powell	\$ 33,075	82.9%	48	3.2%	3.8%	6.0%
SouthWest MT	\$ 41,816	104.8%		4.1%	4.4%	4.6%

	2014	% State	Rank
Silver Bow	44,883	112.5%	11
Yellowstone	42,735	107.1%	16
Gallatin	42,350	106.1%	17
Lewis and Clark	41,665	104.4%	19
Cascade	41,163	103.2%	23
Flathead	38,982	97.7%	28
Missoula	38,422	96.3%	31
Ravalli	36,256	90.9%	42



Outlook

- Silver Bow County and SouthWest Montana has remained relatively flat over the past few years.
- Pressure from low commodity prices, impacted Golden Sunlight (-140 direct and -340 indirect jobs), and negatively impact earnings at MRI and REC Silicon
- Continued government reductions
- Strong major employers and diversification help offset (Utilities, Health Care, MT Tech growth, social services and aging population, retail trade and food services. Temporary construction increase in 2015 with NWE building. *Potential addition from environmental clean-up and processing in Anaconda and Butte not included.*
- Overall: Slight dip in employment and increase in unemployment in 2016, followed by remaining relatively flat for following 2 years. Need new business and growth additions in Silver Bow and SW Montana.

