





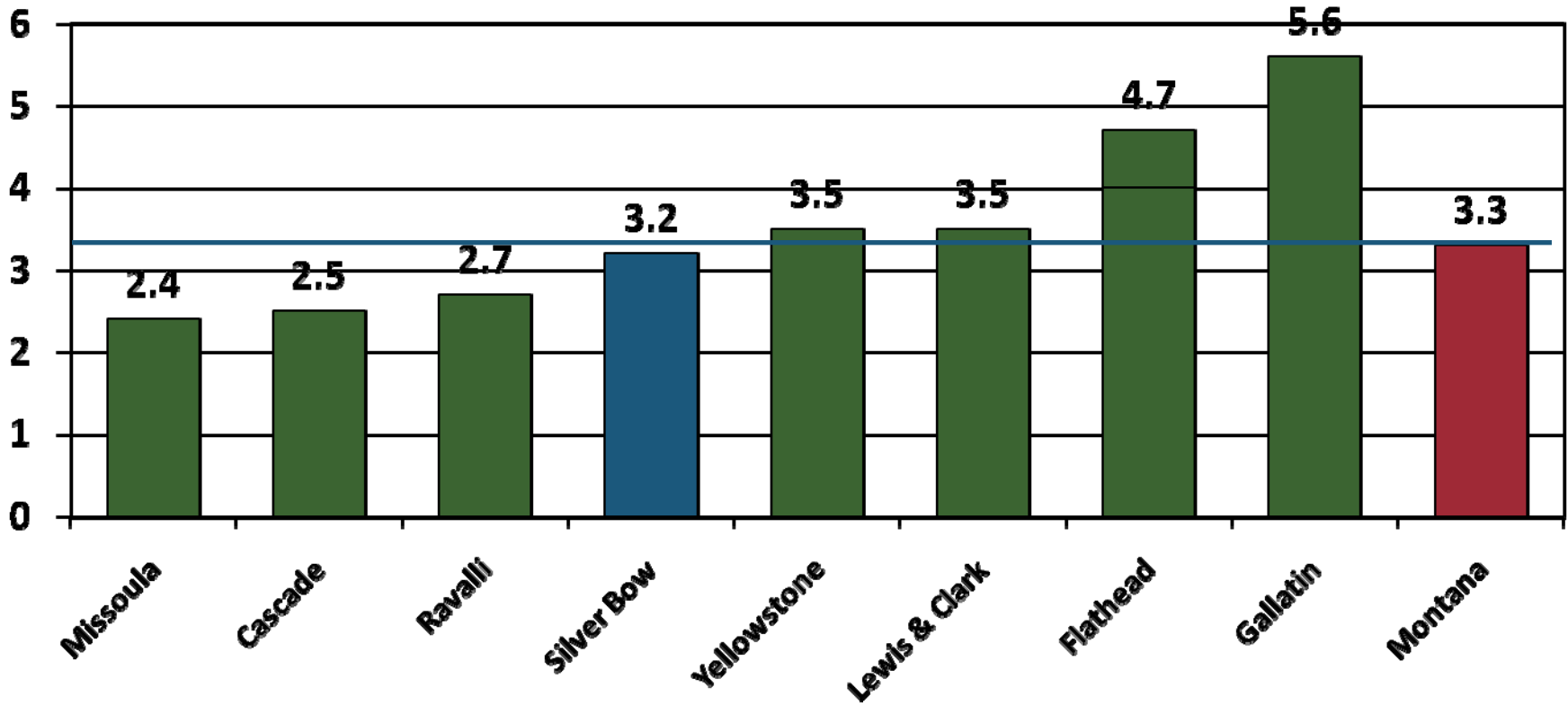
# Local Outlook: Butte

By Paul E. Polzin  
Director Emeritus  
Bureau of Business and Economic Research  
The University of Montana



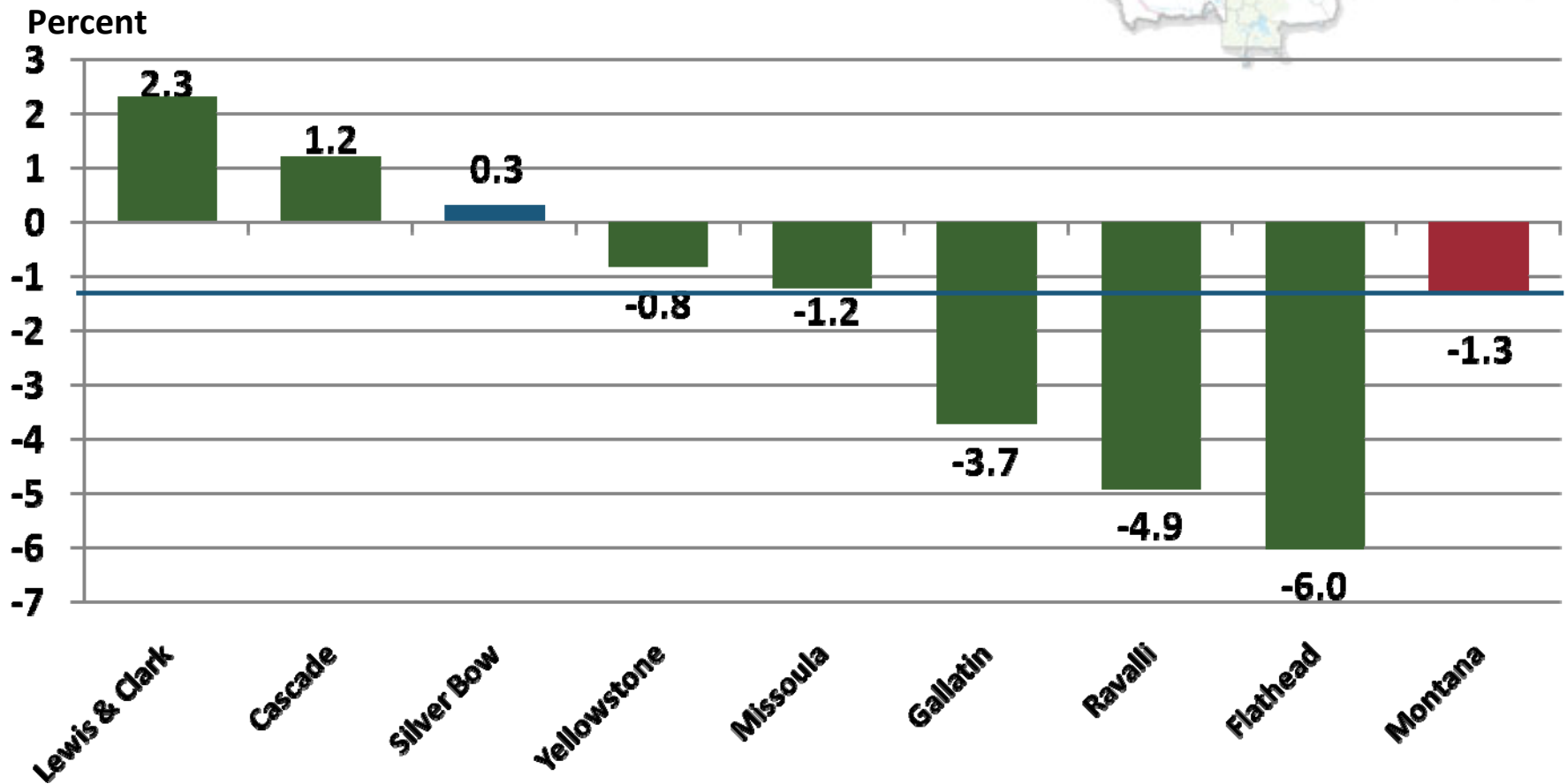
# Annual Percent Change in Nonfarm Labor Income (in Constant Dollars), 2001-2007

Percent



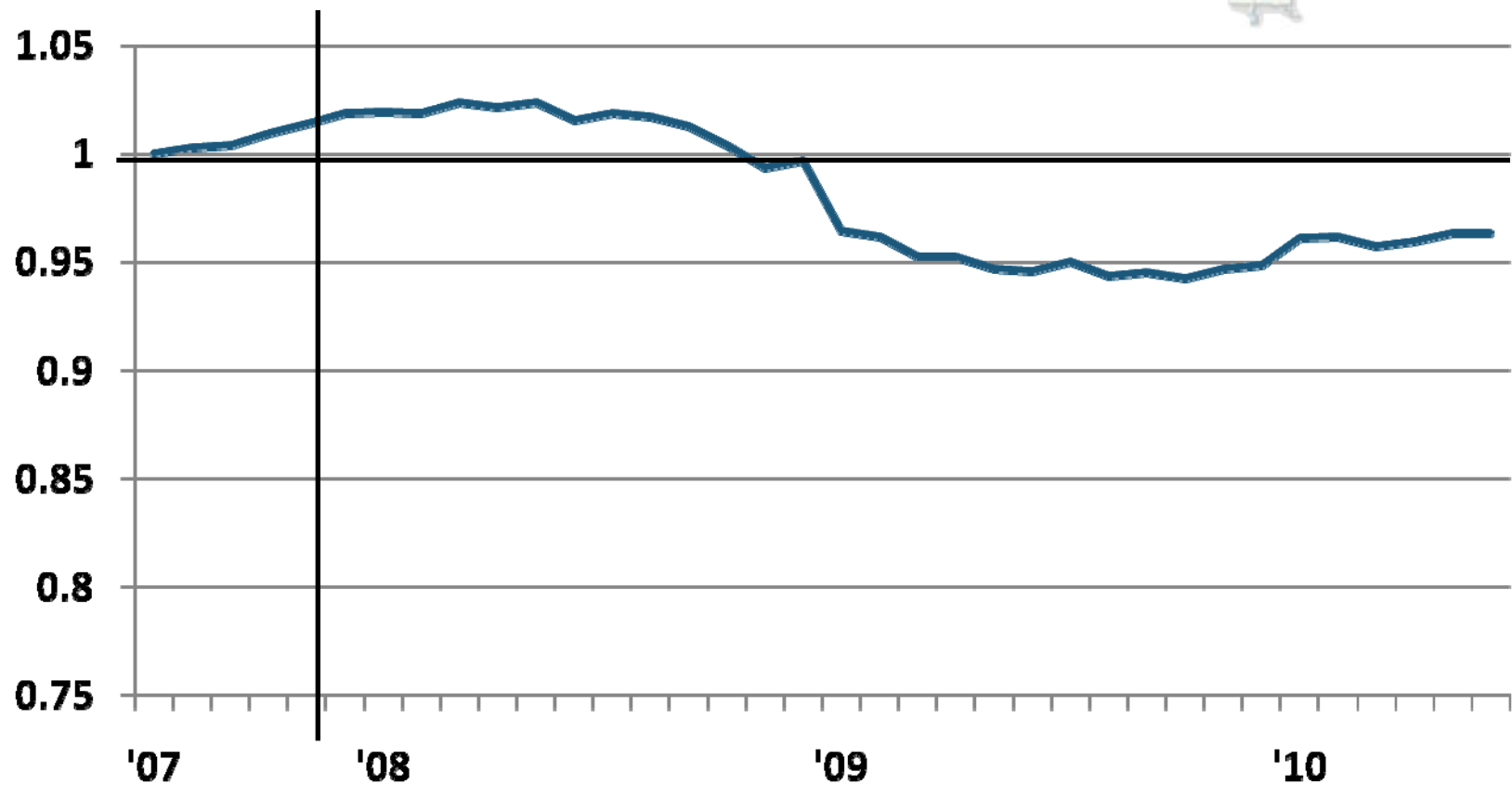


# Annual Percent Change in Nonfarm Labor Income (in Constant Dollars) , 2008-2009

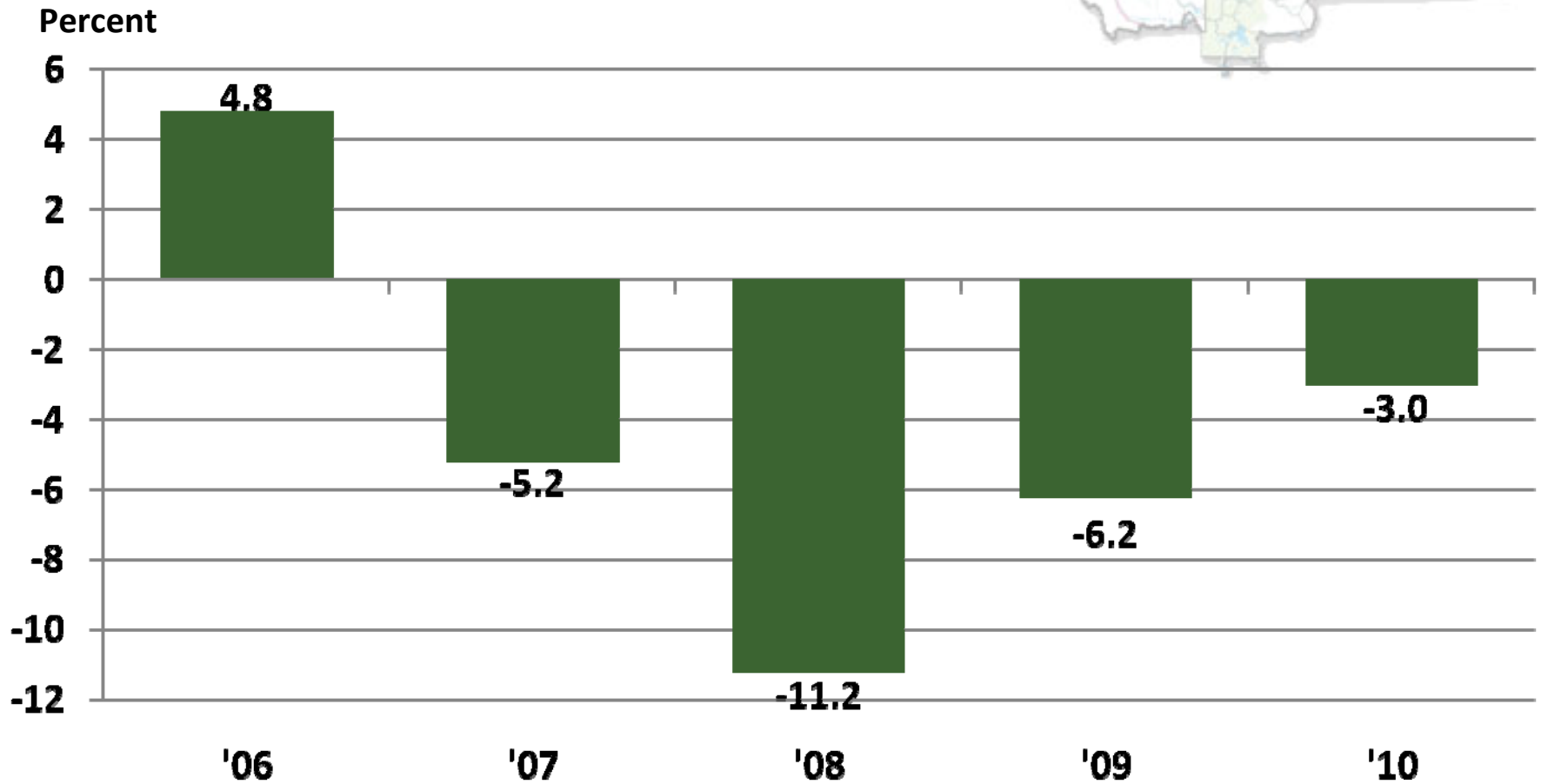


# Nonfarm Employment (Seasonally Adjusted), Silver Bow County


Recession Declared, Dec. 2007



# Annual Percent Change in Construction Labor Income (in Constant Dollars), Silver Bow County

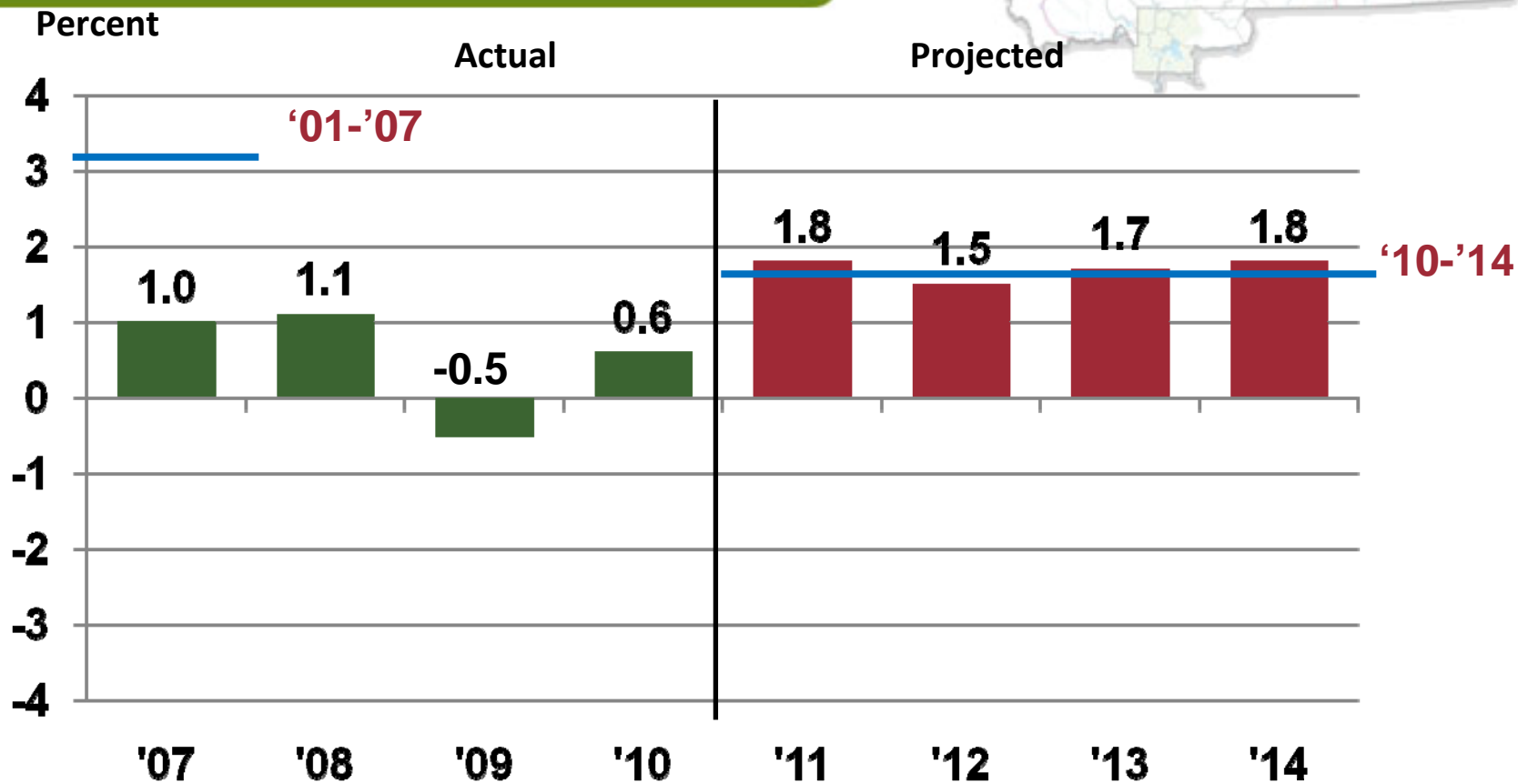


# Silver Bow County's Economic Base 2008-2010



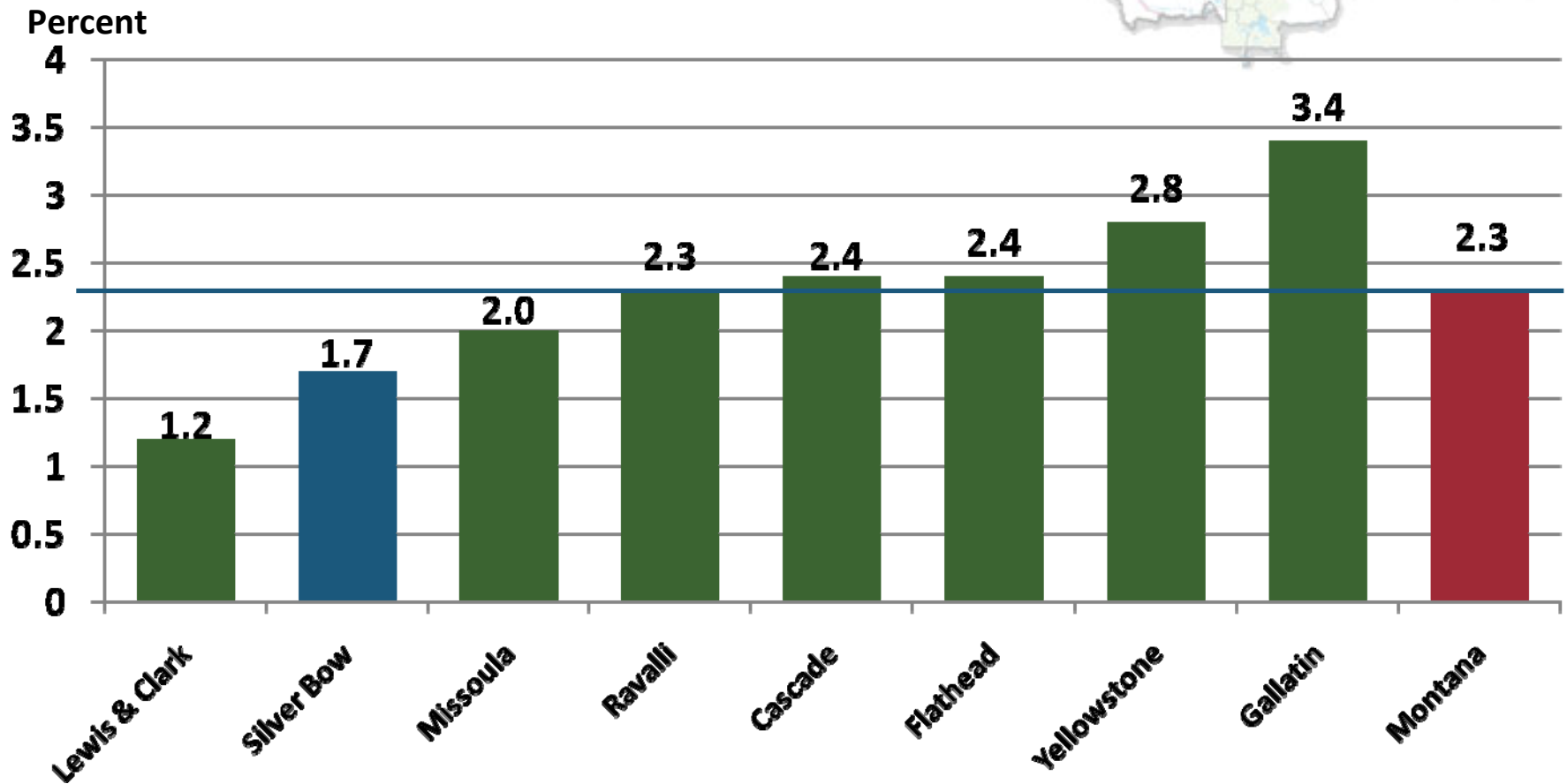
• Manufacturing	10%	Stable
• Federal Gov.	10%	Stable at Best
• Utility	12%	Stable
• Trade Center Retail	13%	Slow Growth
• Montana Tech, State Gov.	14%	Modest Pay Increase
• Trade Center Services	18%	Slow Growth
• Mining	23%	Positive World Trends
Construction		Slow Recovery

# Actual and Projected Change in Nonfarm Labor Income, Silver Bow County, 2007-2014





# Projected Annual Percent Change in Nonfarm Labor Income (in Constant Dollars) 2010-2014



**Questions?**