





Local Outlook: Missoula

By Paul E. Polzin

Director Emeritus

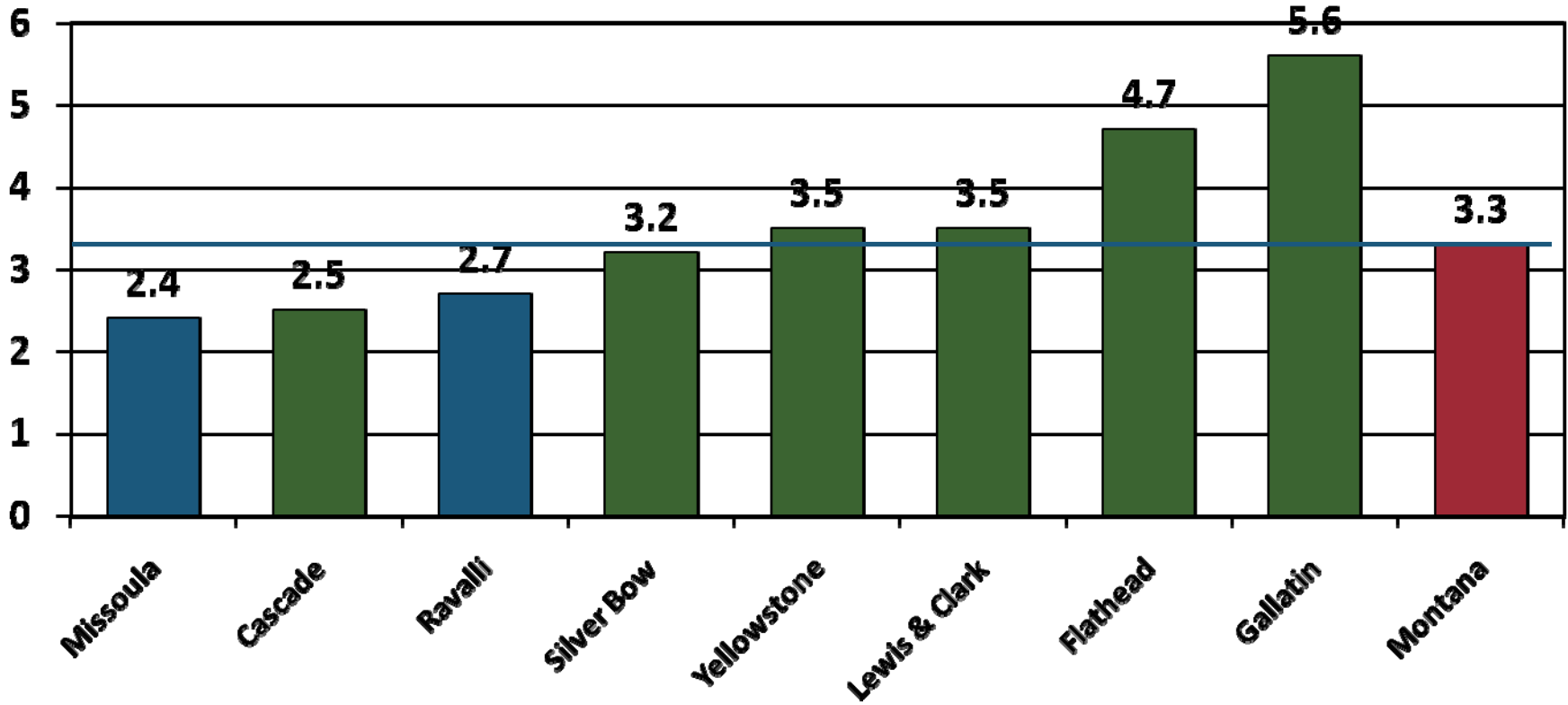
Bureau of Business and Economic Research

The University of Montana

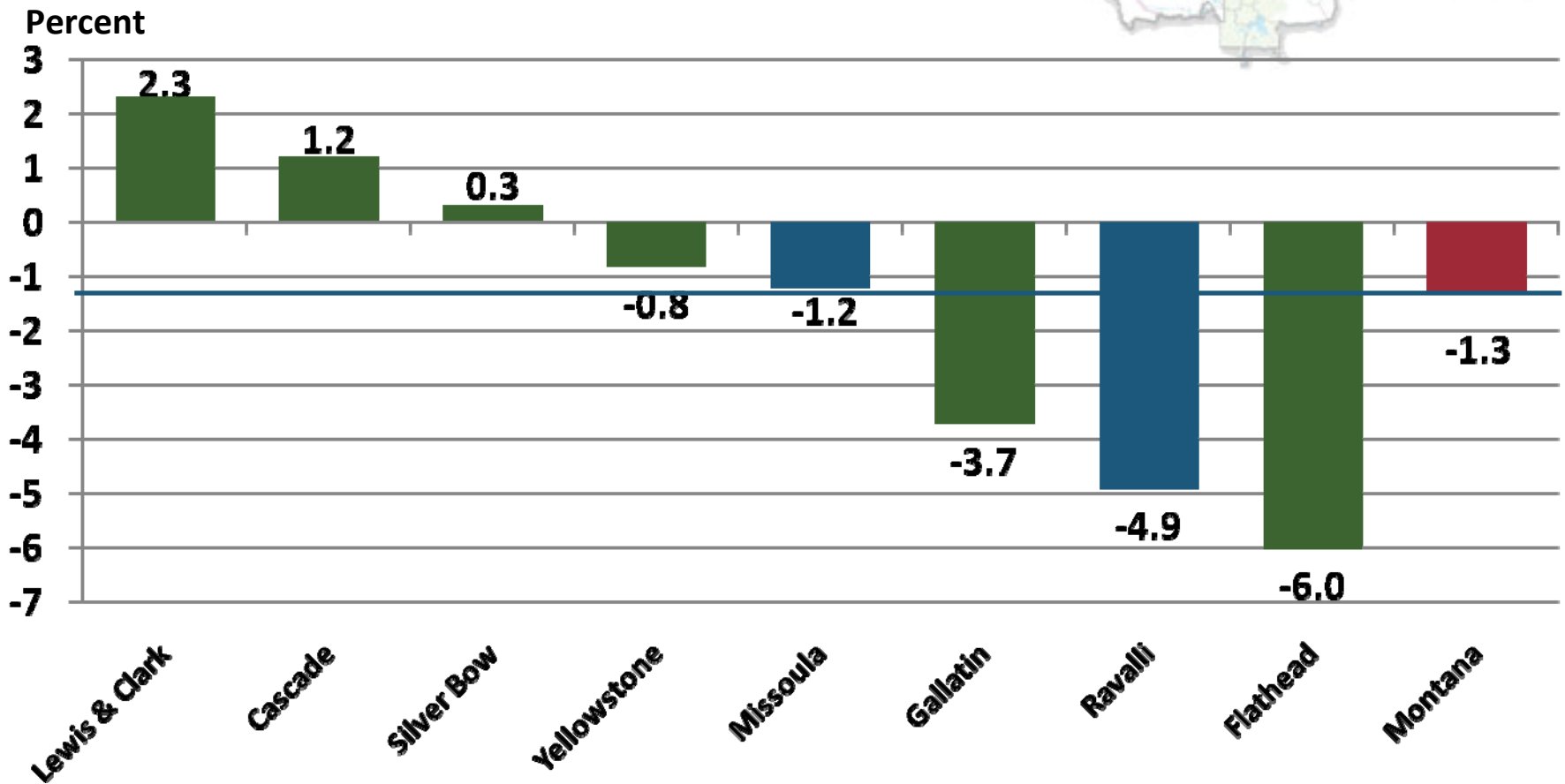


Annual Percent Change in Nonfarm Labor Income (in Constant Dollars), 2001-2007

Percent

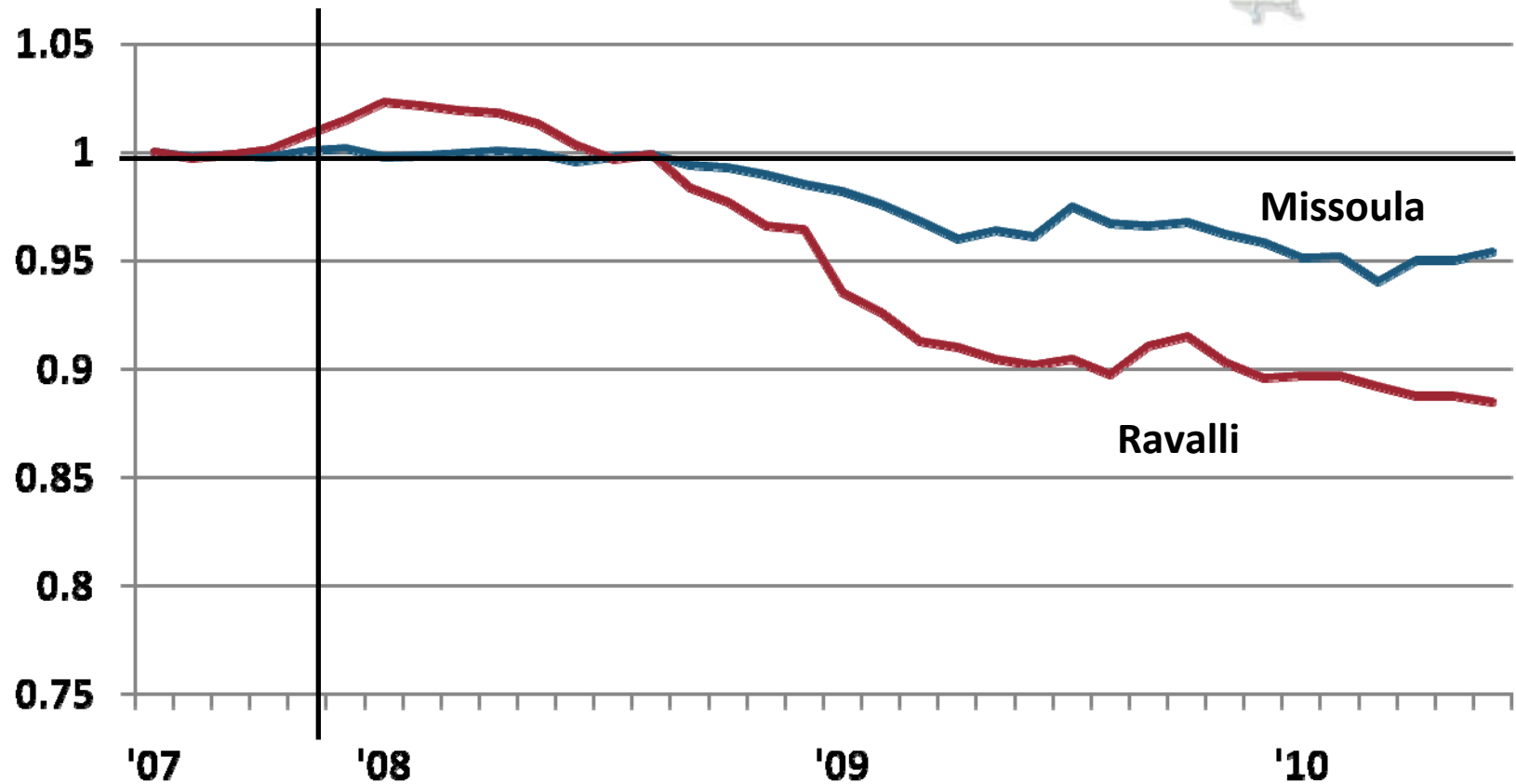


Annual Percent Change in Nonfarm Labor Income (in Constant Dollars) , 2008-2009

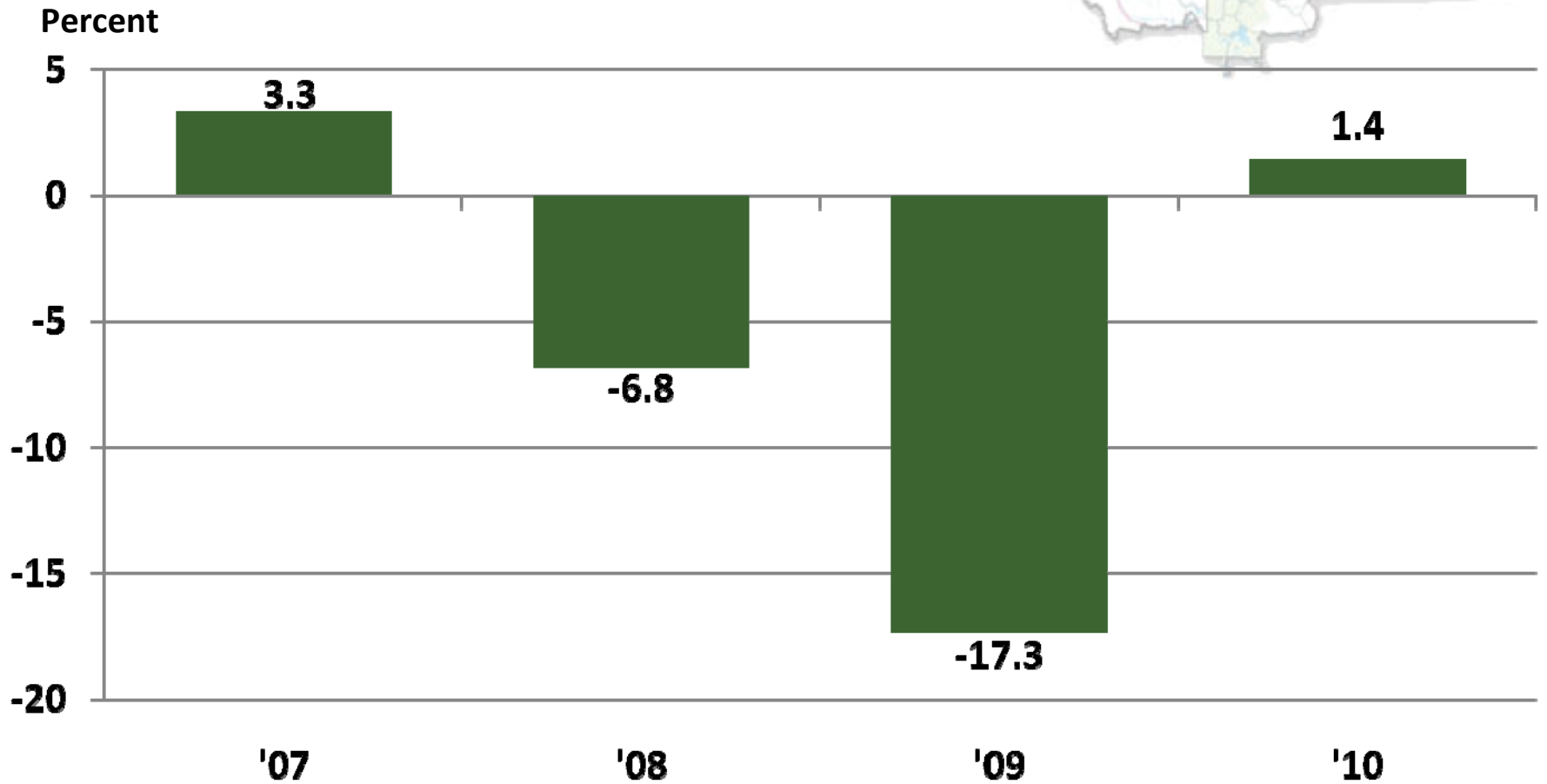


Nonfarm Employment (Seasonally Adjusted), Missoula and Ravalli Counties

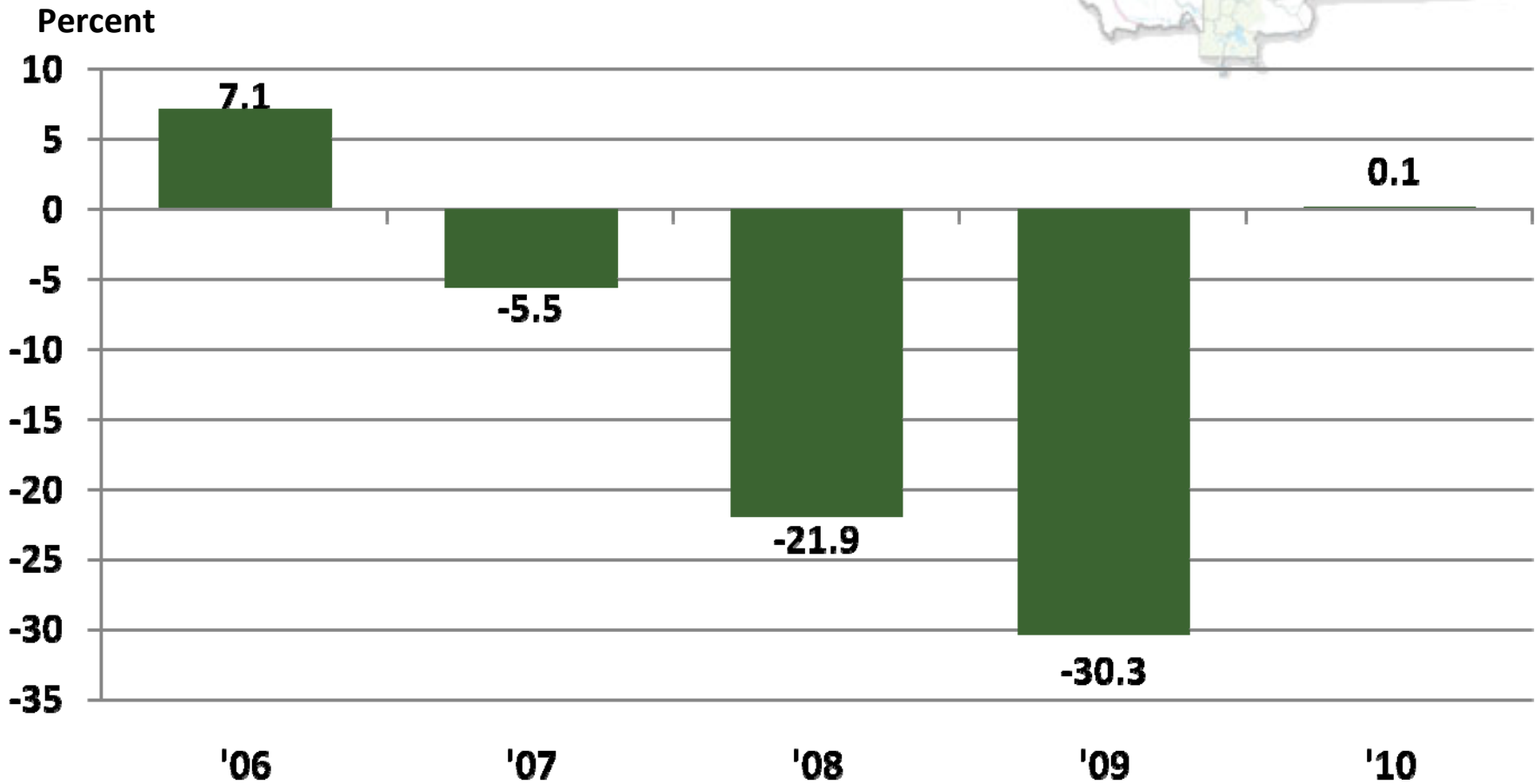
Recession Declared, Dec. 2007



Annual Percent Change in Construction Labor Income (in Constant Dollars), Missoula County



Annual Percent Change in Construction Labor Income (in Constant Dollars), Ravalli County





Missoula County's Economic Base 2008-2010

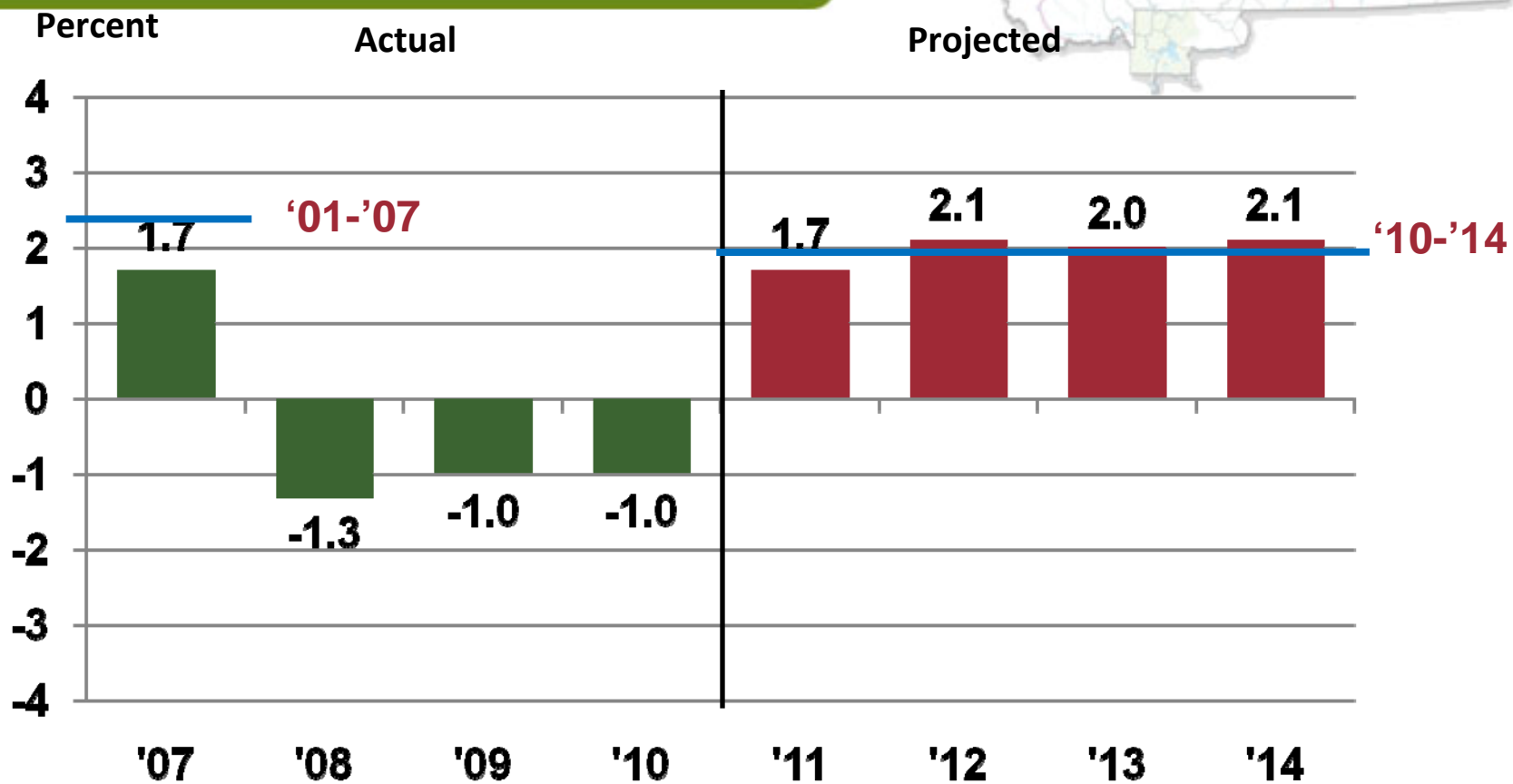
- Other 6%
- Nonresident Travel 7%
- Transportation 13%
- Wood and Paper 8%
- Federal Gov't 14%
- Trade Center Medical 14%
- Trade Center Retail, Service 6%
- UM, Other State 20%

Construction

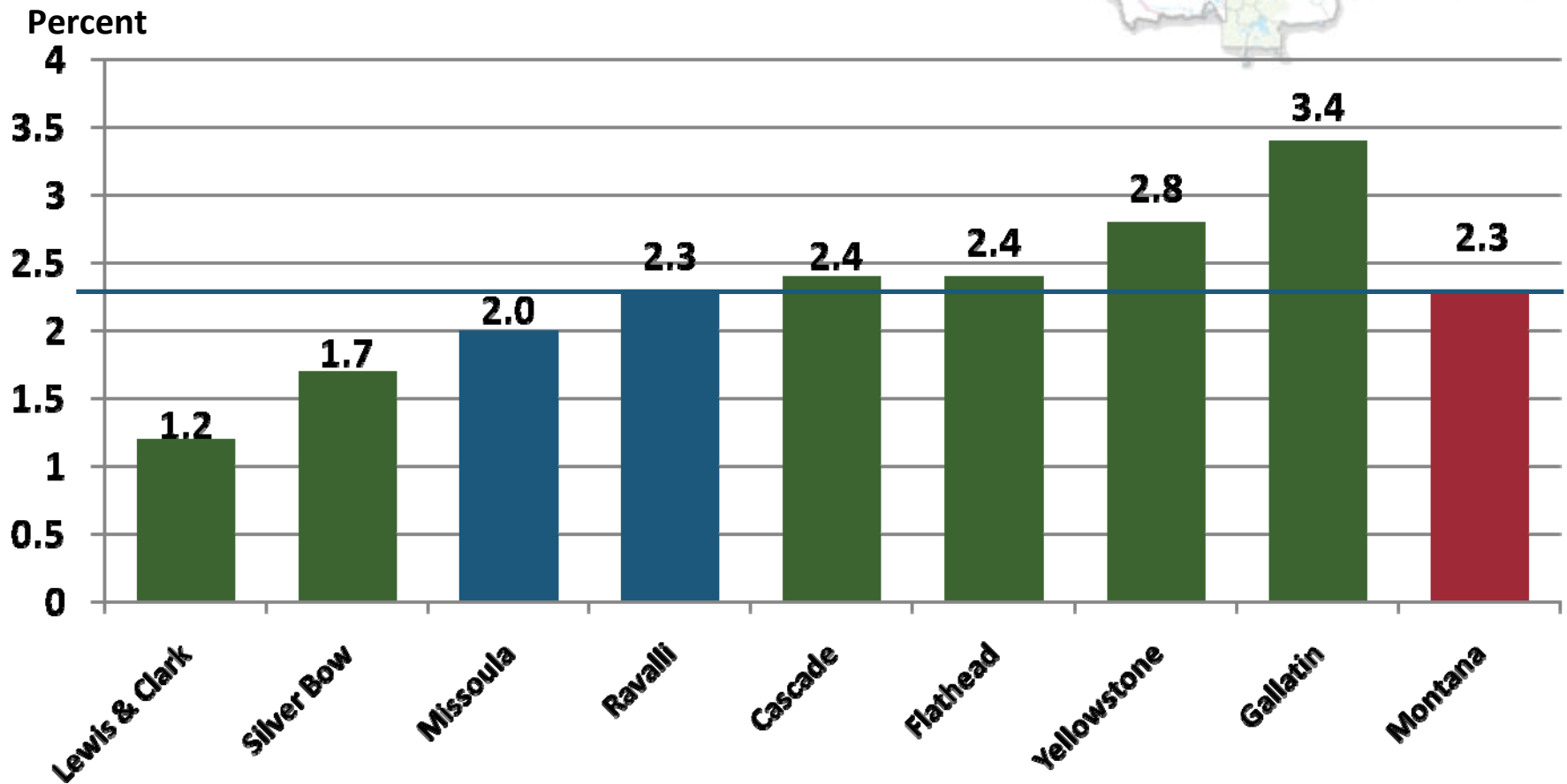
Some Recovery
Slow Growth
Flat, at Best
Stable at Best
Reform?
Negative to Flat
Modest Pay Increase

Slow Recovery

Actual and Projected Change in Nonfarm Labor Income, Missoula County, 2007-2014



Projected Annual Percent Change in Nonfarm Labor Income (in Constant Dollars) 2010-2014



Questions?