





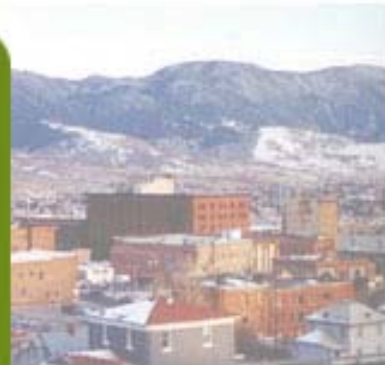
Local Outlook: Helena

By Paul E. Polzin

Director Emeritus

Bureau of Business and Economic Research

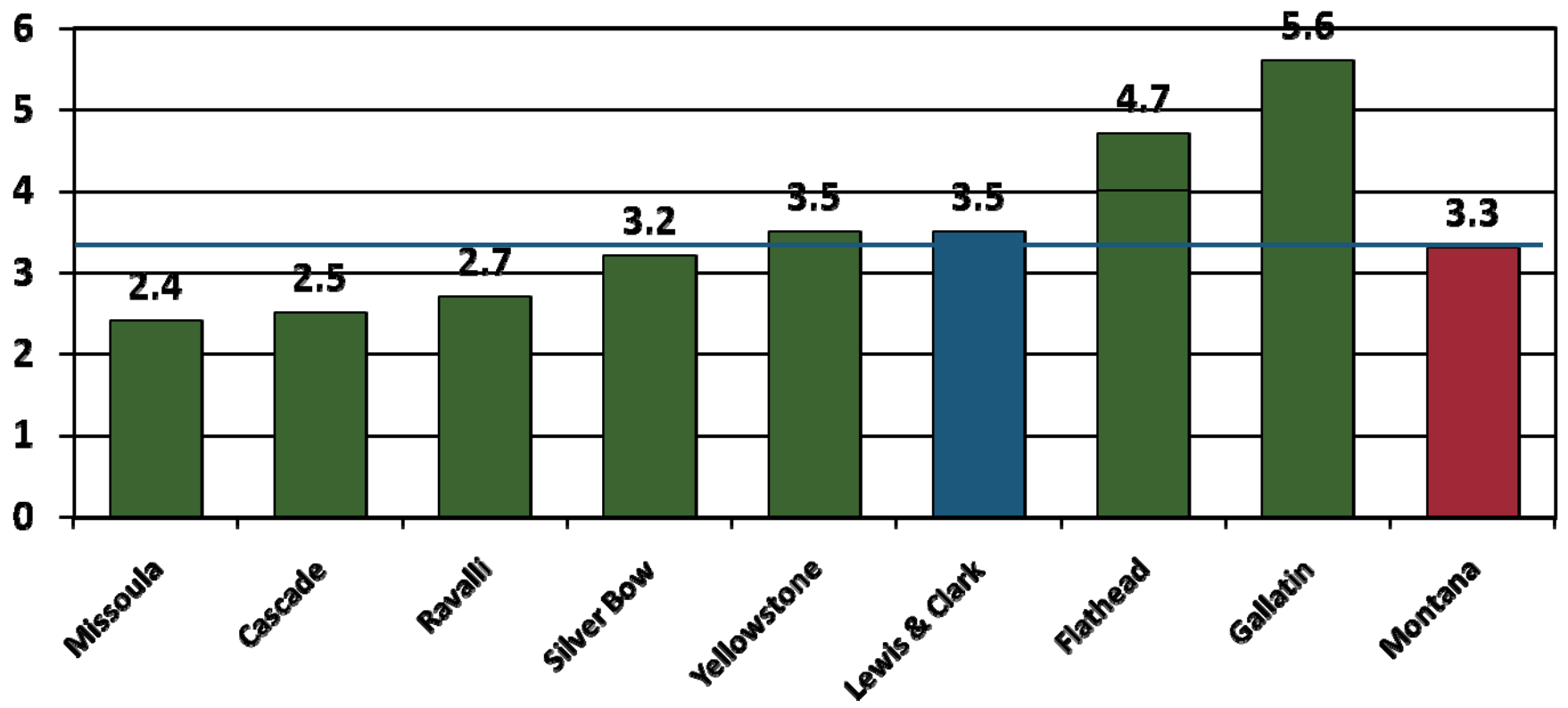
The University of Montana



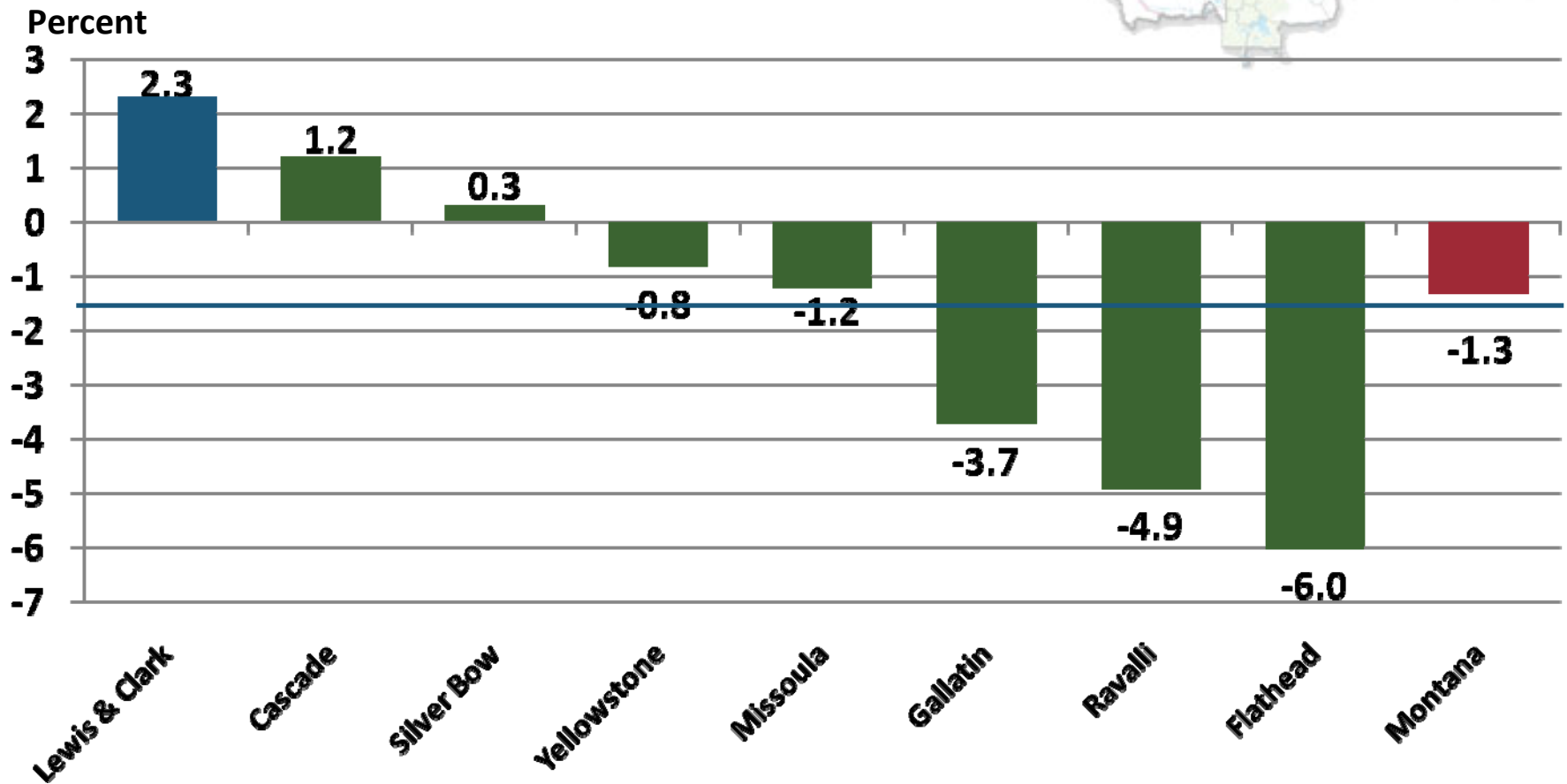
Annual Percent Change in Nonfarm Labor Income (in Constant Dollars), 2001-2007



Percent

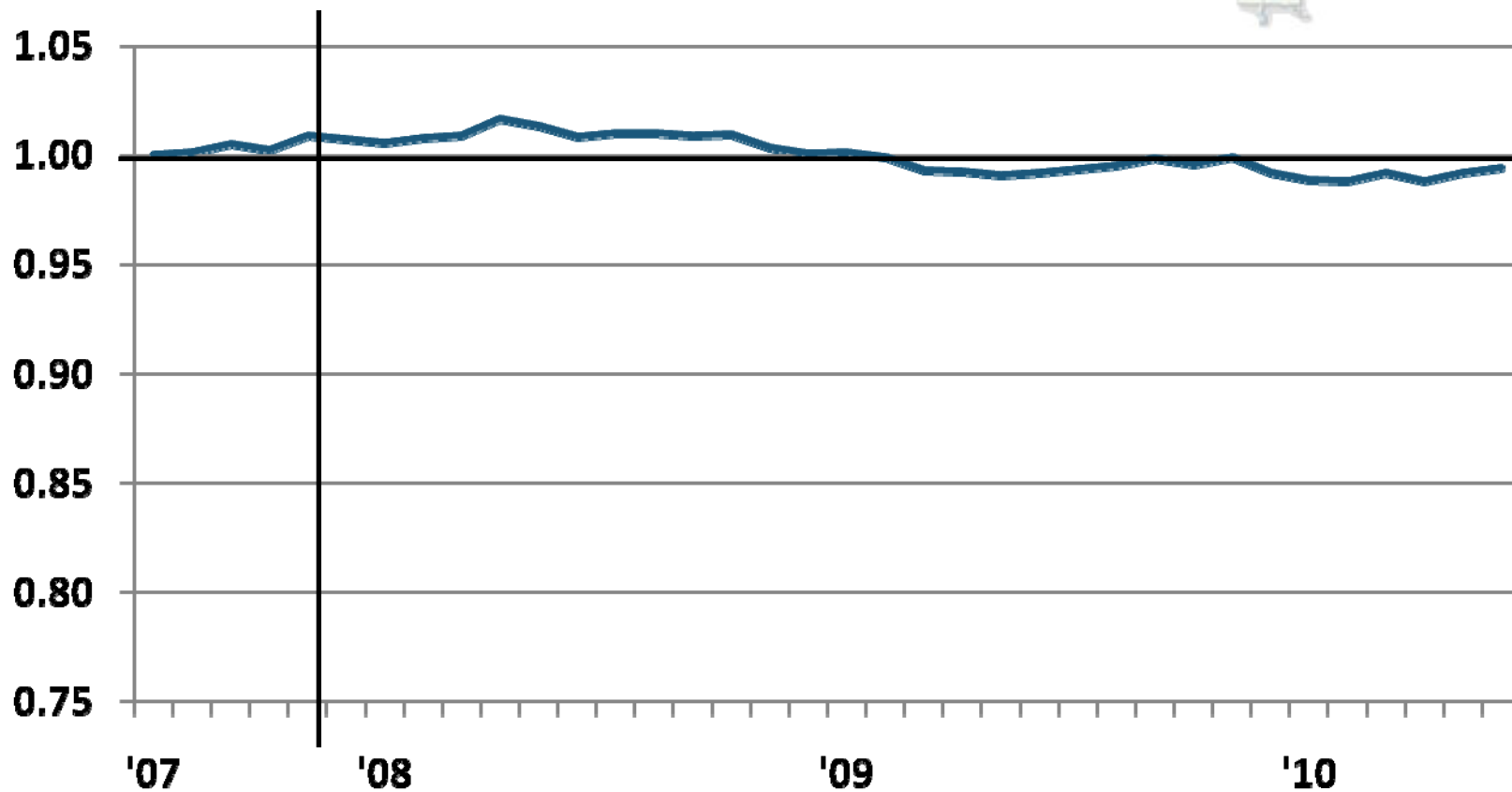


Annual Percent Change in Nonfarm Labor Income (in Constant Dollars) , 2008-2009

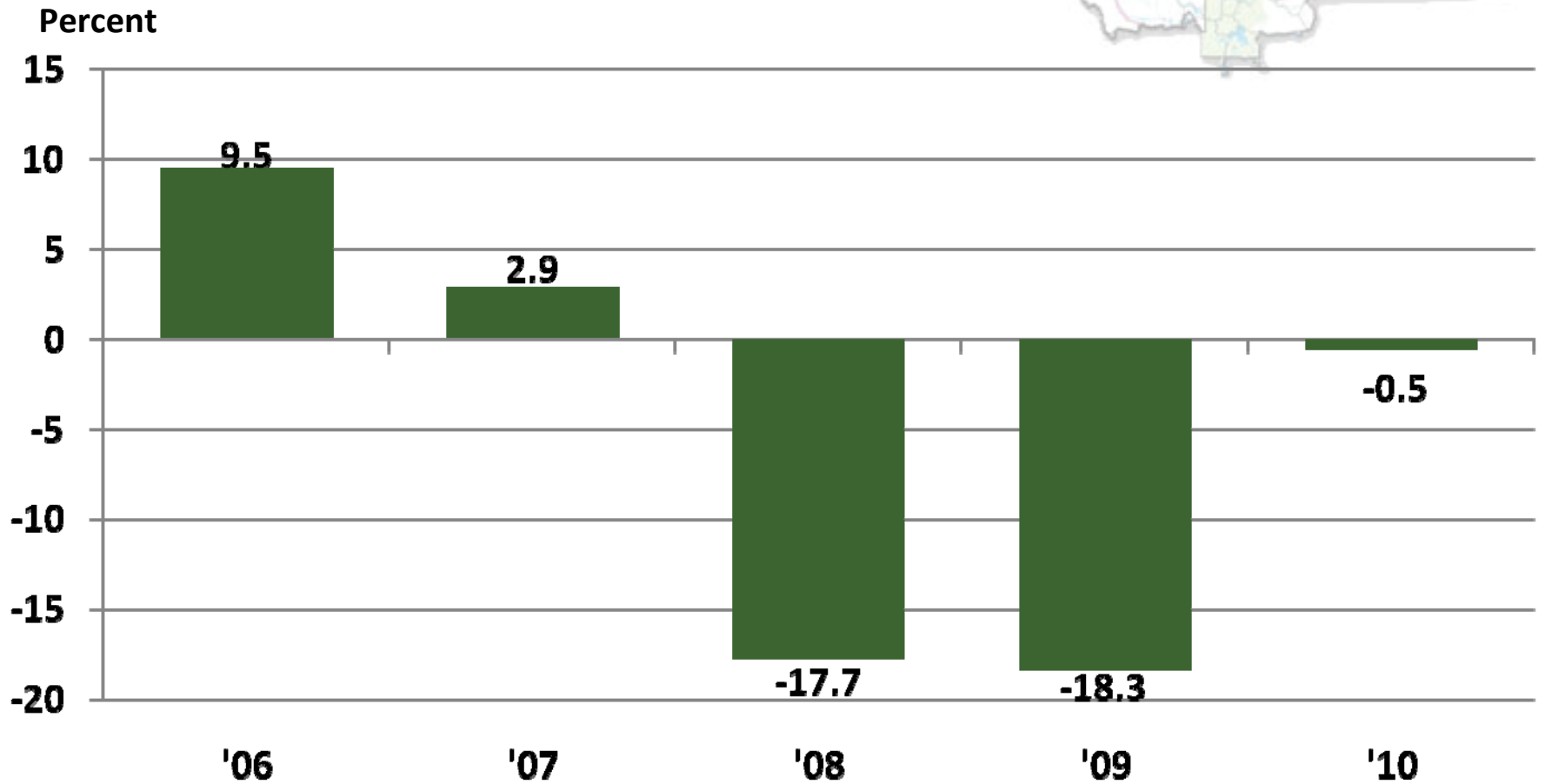


Nonfarm Employment (Seasonally Adjusted), Lewis & Clark County

Recession Declared, Dec. 2007



Annual Percent Change in Construction Labor Income (in Constant Dollars), Lewis & Clark County



Lewis & Clark County's Economic Base 2008-2010



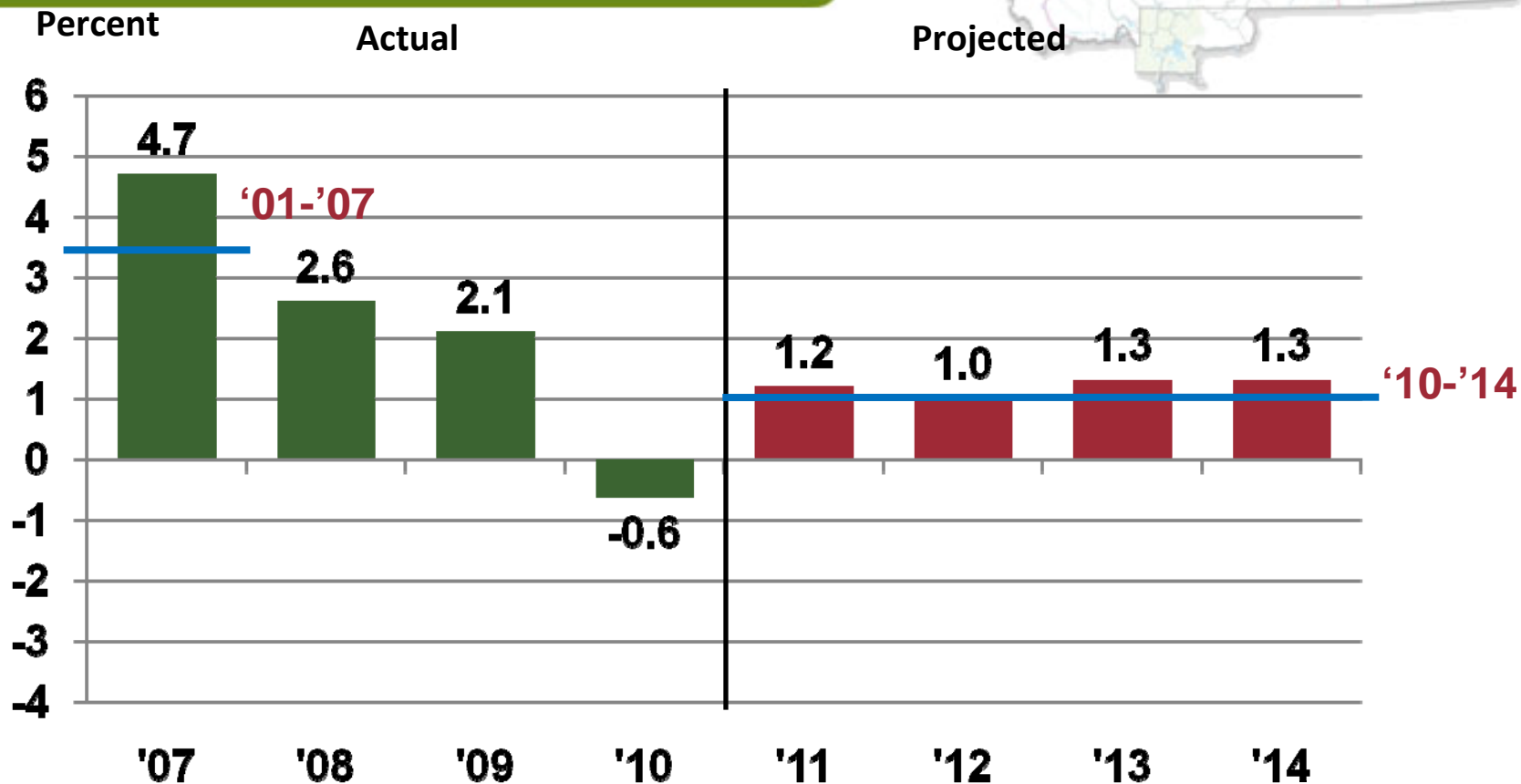
- Other 10%
- Manufacturing 5%
- Trade Center 16%
- Federal Government 24%
- State Government 45%

Stable
Slower Growth
Stable at Best
Modest Pay Increase

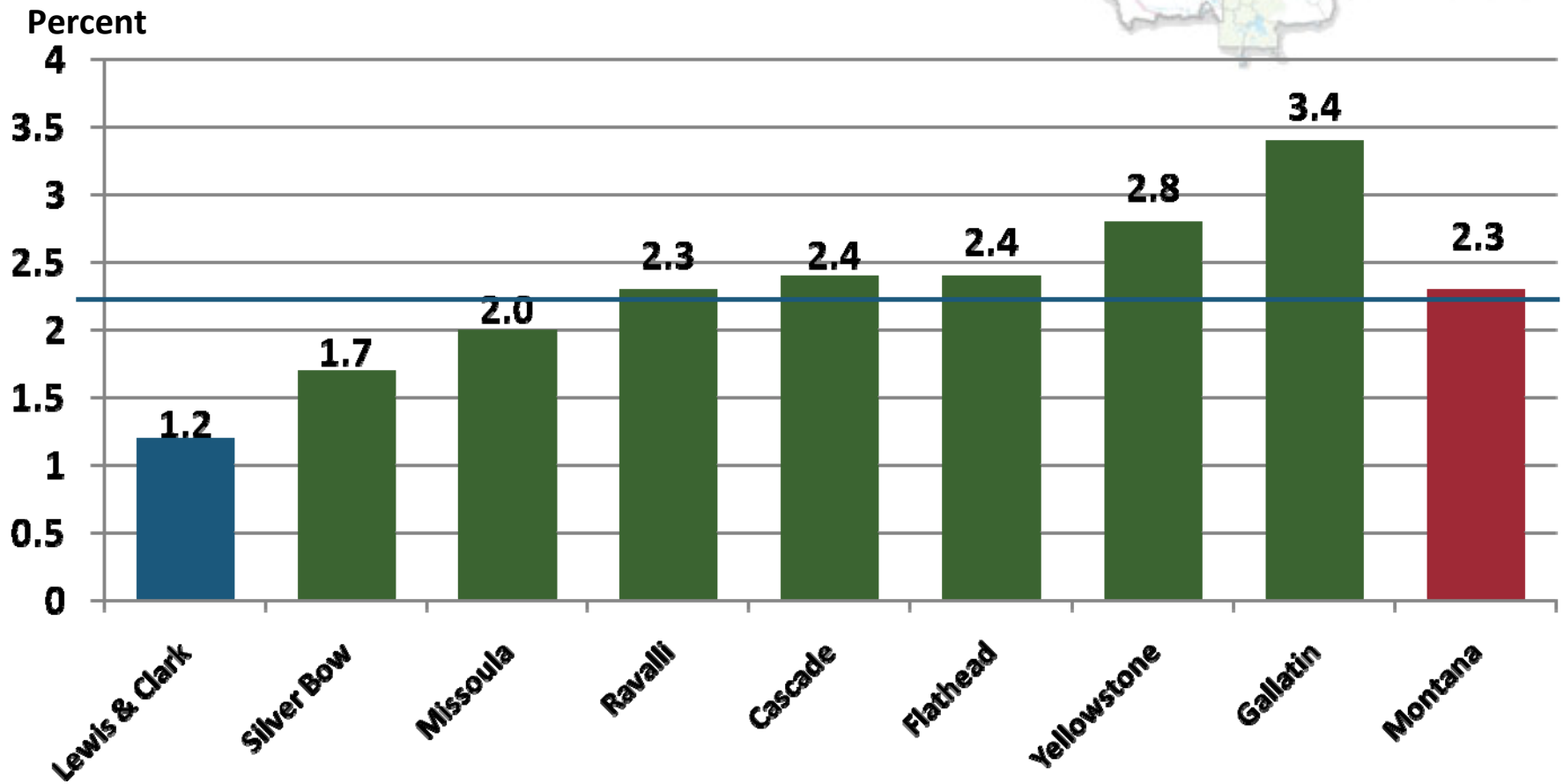
Construction

Slow Recovery

Actual and Projected Change in Nonfarm Labor Income, Lewis & Clark County, 2007-2014



Projected Annual Percent Change in Nonfarm Labor Income (in Constant Dollars) 2010-2014



Questions

?