





Local Outlook: Bozeman

By Paul E. Polzin

Director Emeritus

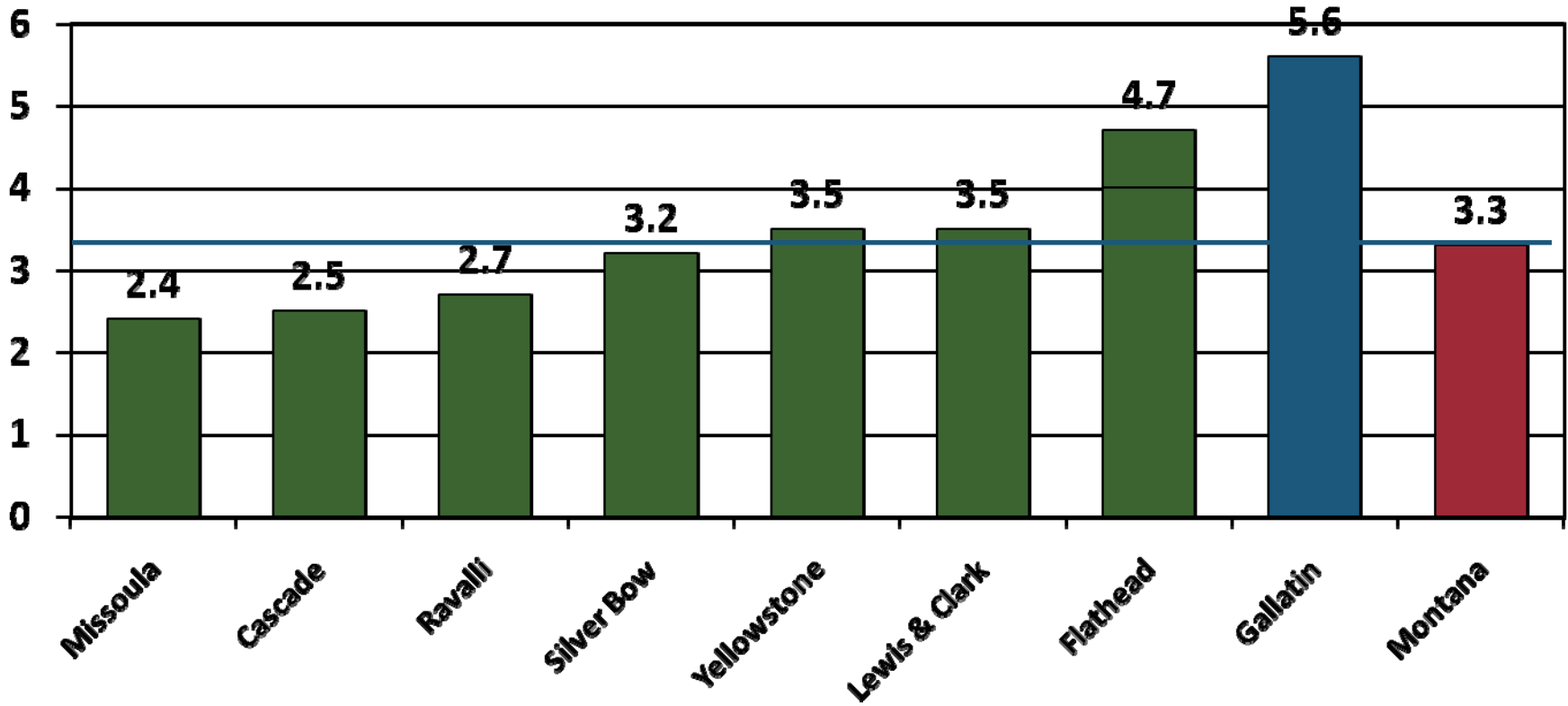
Bureau of Business and Economic Research

The University of Montana

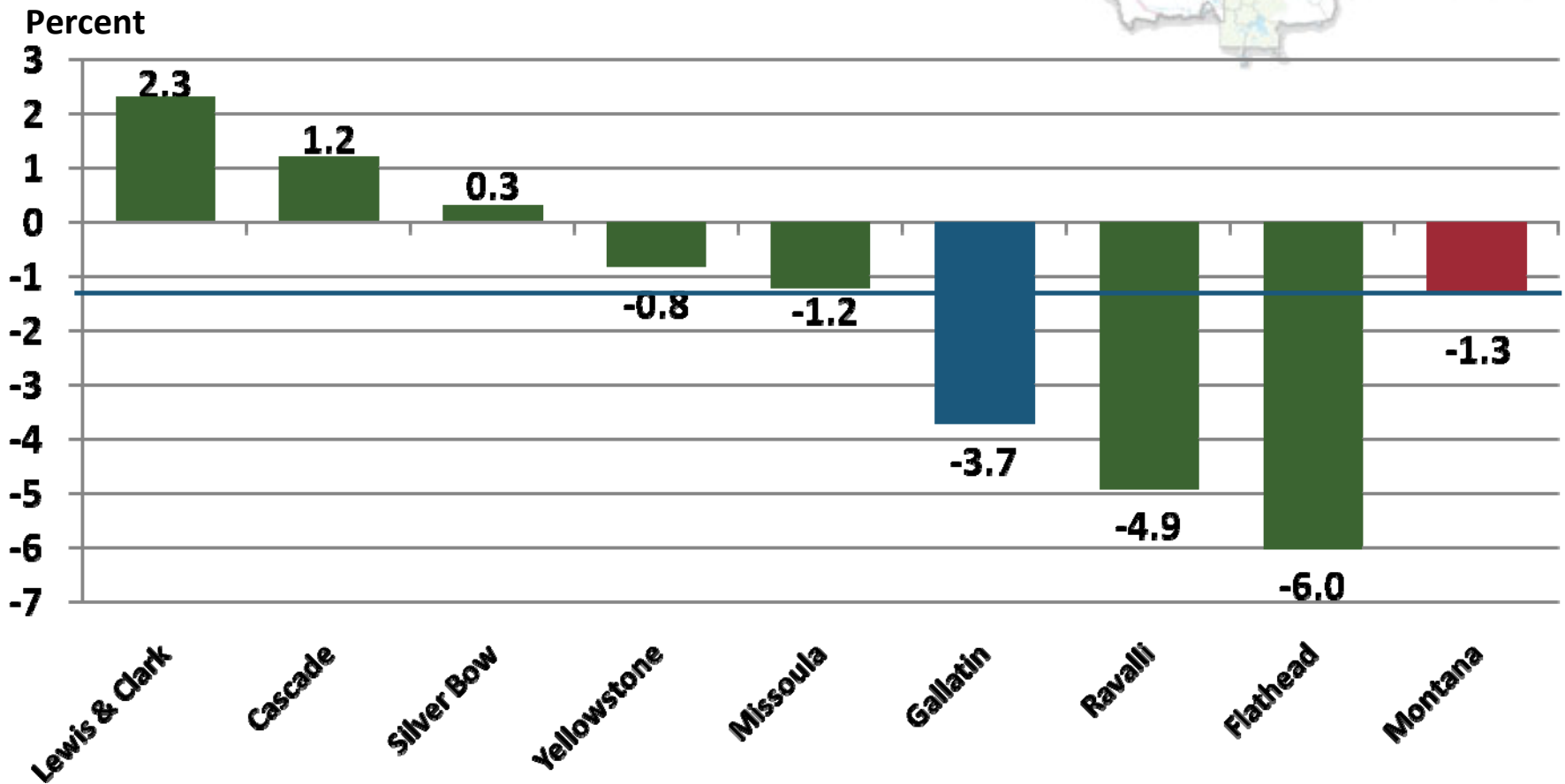


Annual Percent Change in Nonfarm Labor Income (in Constant Dollars), 2001-2007

Percent

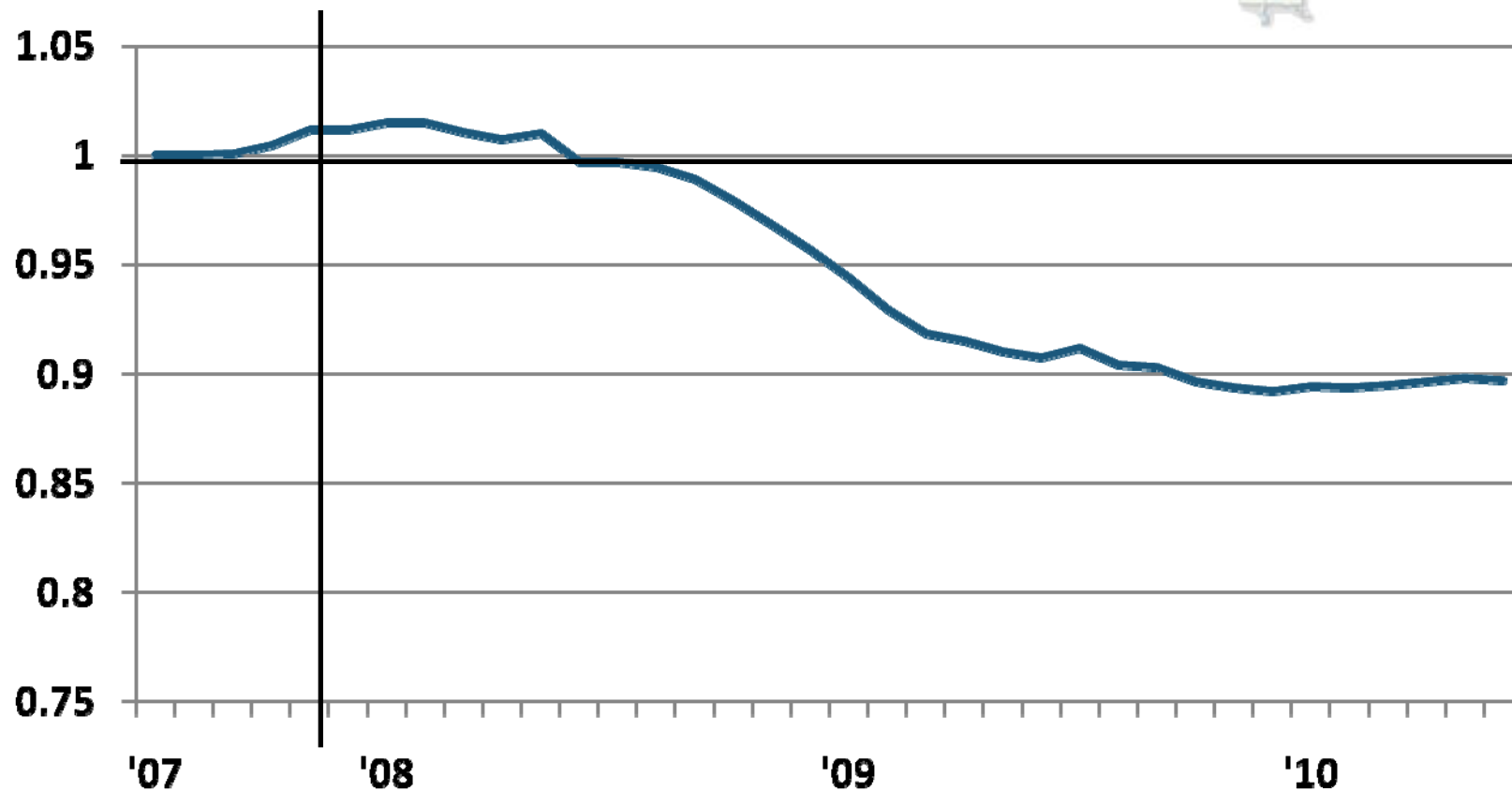


Annual Percent Change in Nonfarm Labor Income (in Constant Dollars) , 2008-2009

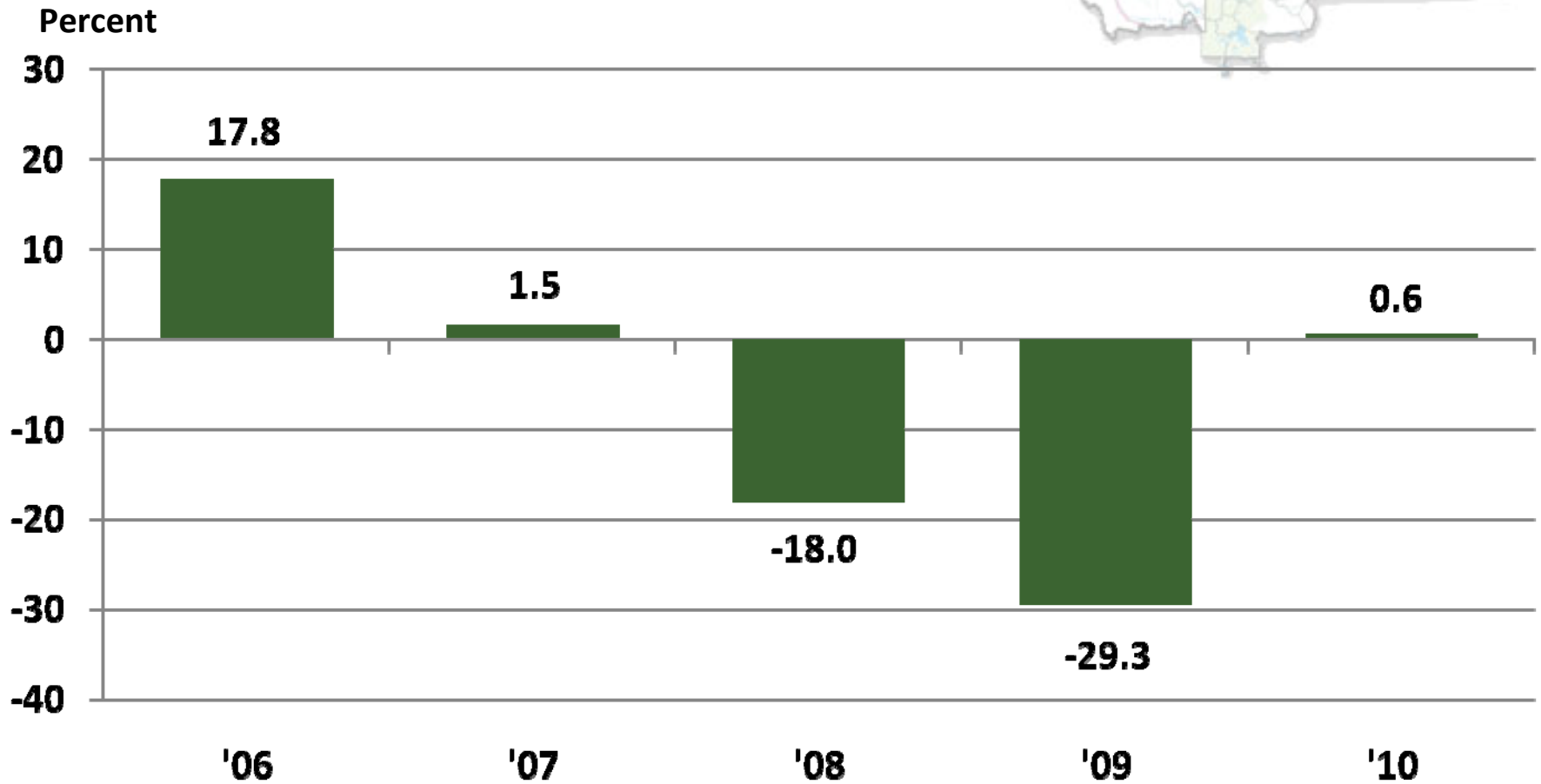


Nonfarm Employment (Seasonally Adjusted), Gallatin County

Recession Declared, Dec. 2007



Annual Percent Change in Construction Labor Income (in Constant Dollars), Gallatin County

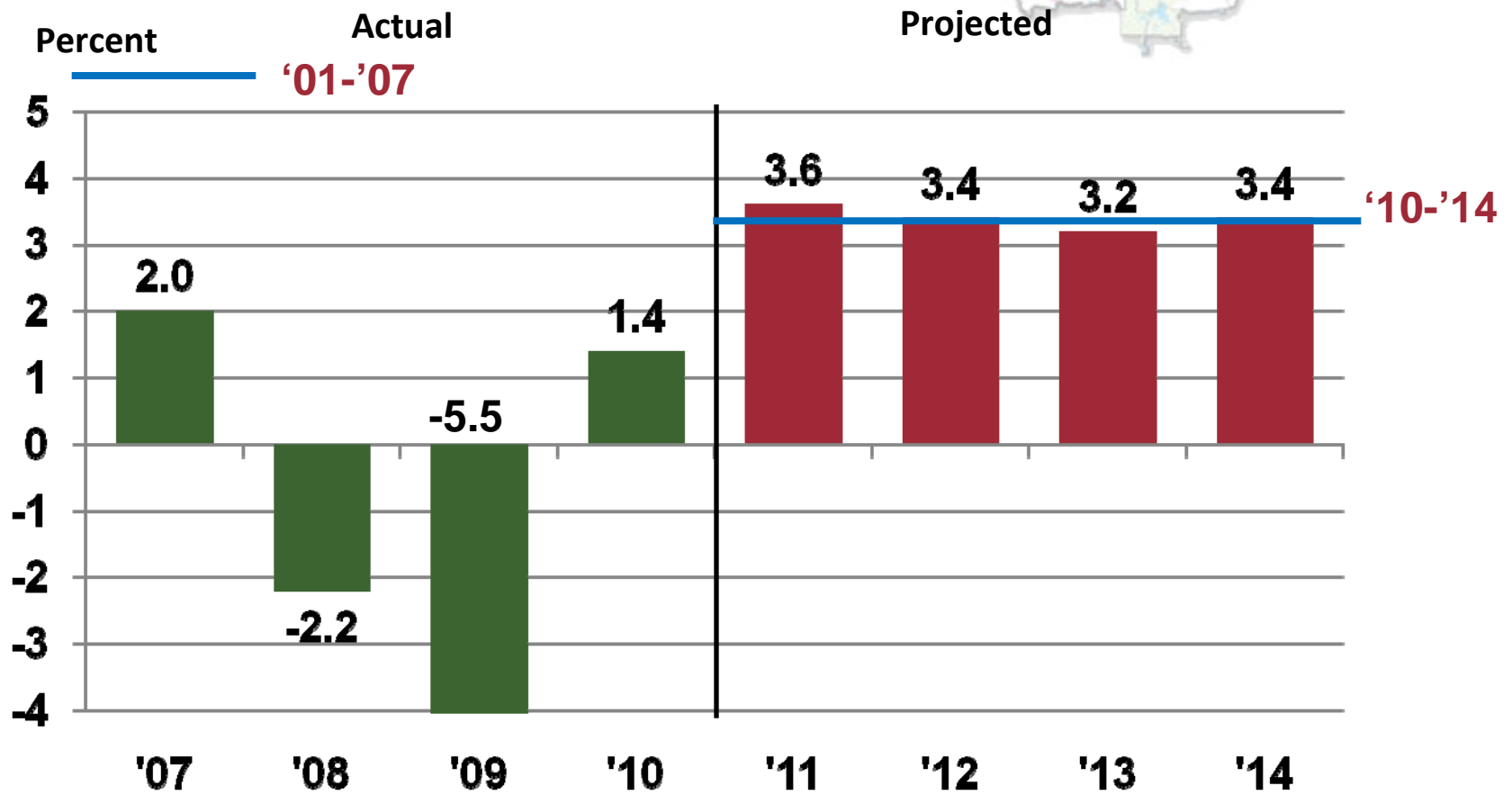


Gallatin County's Economic Base 2008-2010

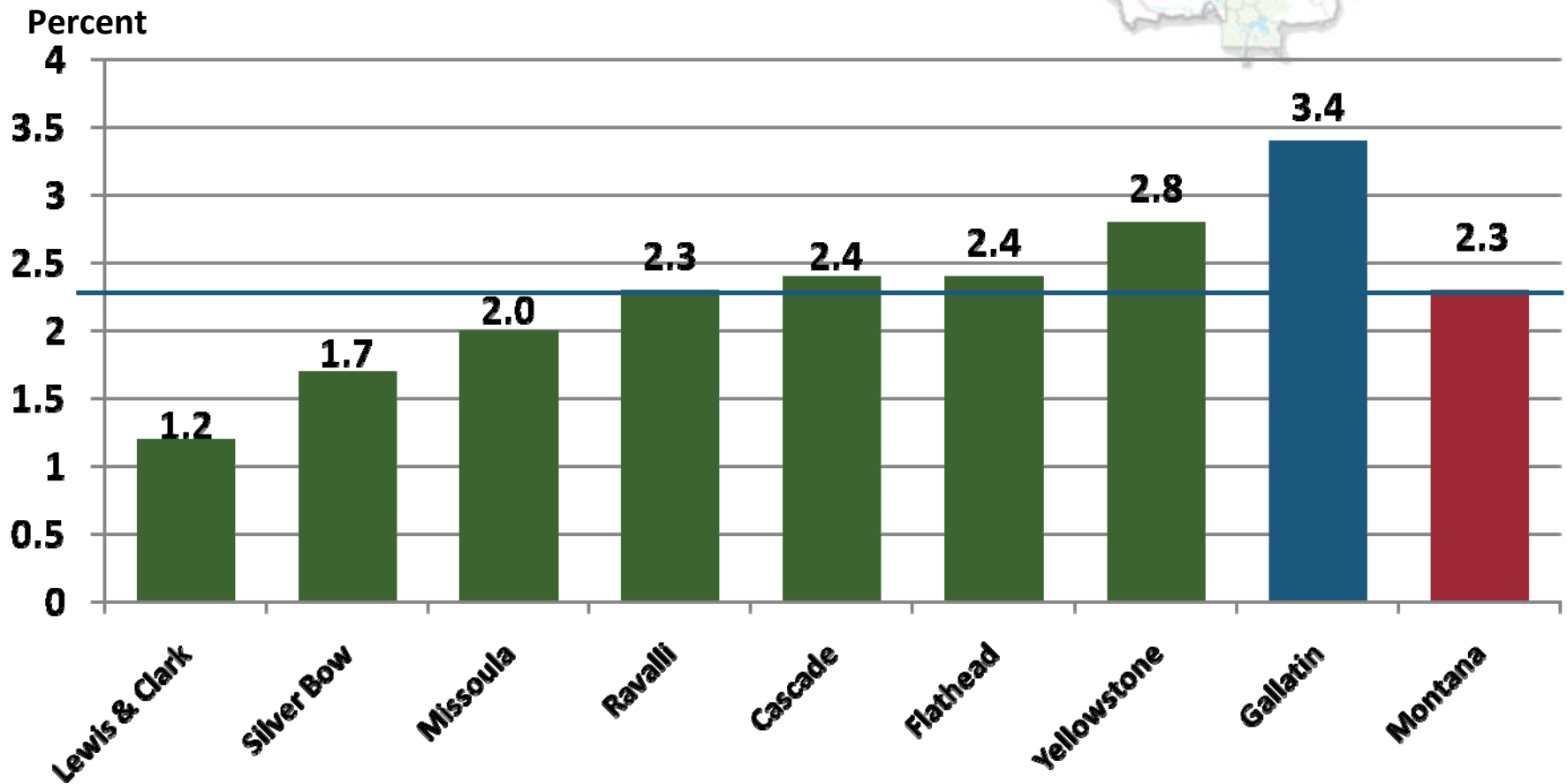


• Other Basic Industries		
• Federal Government	10%	Stable at Best
• Nonresident Travel	15%	Some Recovery
• Trade Center	19%	Slower Growth
• Manufacturing	21%	Cont. Strong
• MSU and State Gov't	30%	Modest Pay Increase
Construction		Slow Recovery

Actual and Projected Change in Nonfarm Labor Income, Gallatin County, 2007-2014



Projected Annual Percent Change in Nonfarm Labor Income (in Constant Dollars) 2010-2014



Questions

?