





Flathead

By Paul E. Polzin

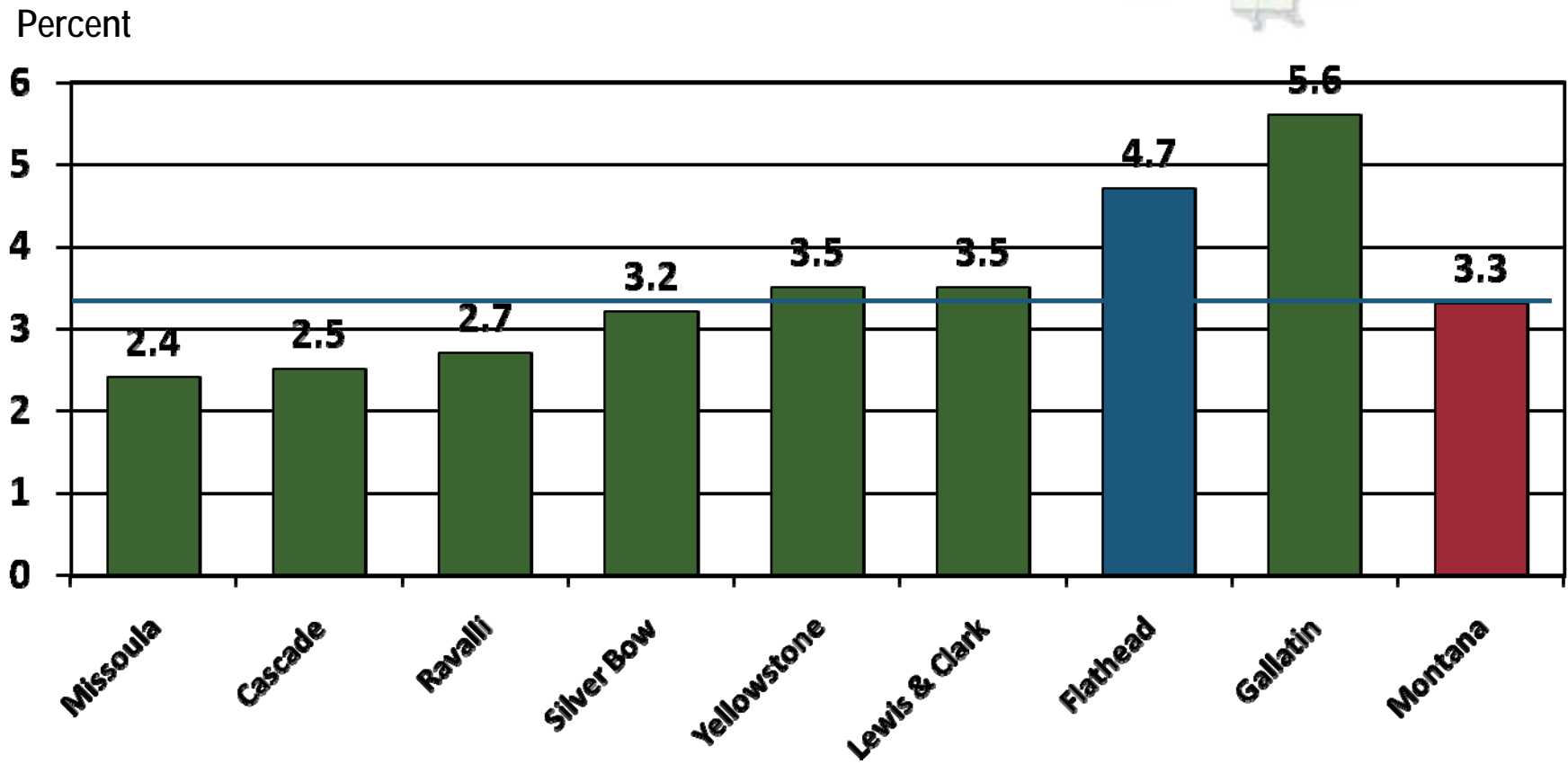
Director Emeritus

Bureau of Business and Economic Research

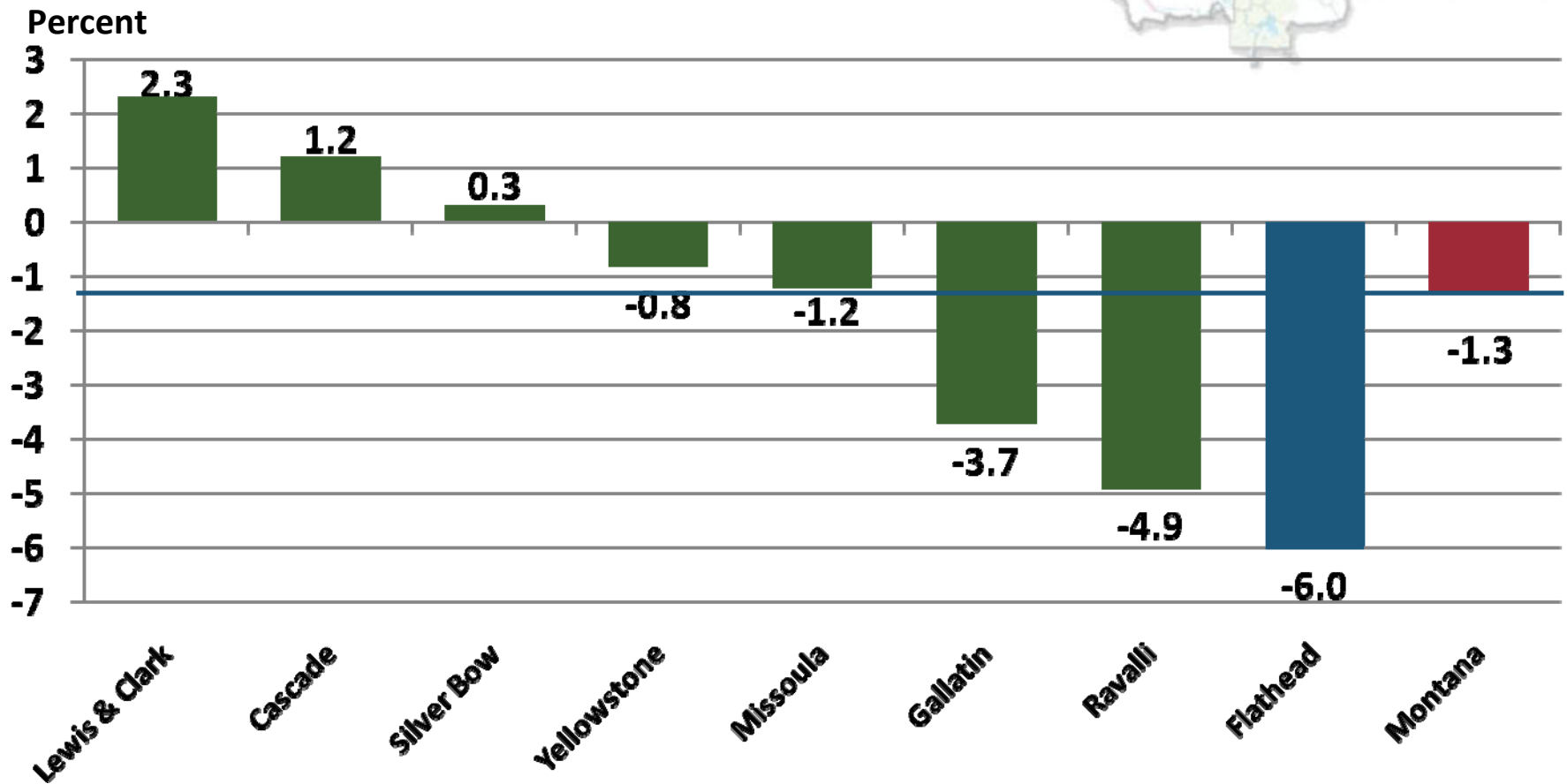
The University of Montana



Annual Percent Change in Nonfarm Labor Income (in Constant Dollars), 2001-2007

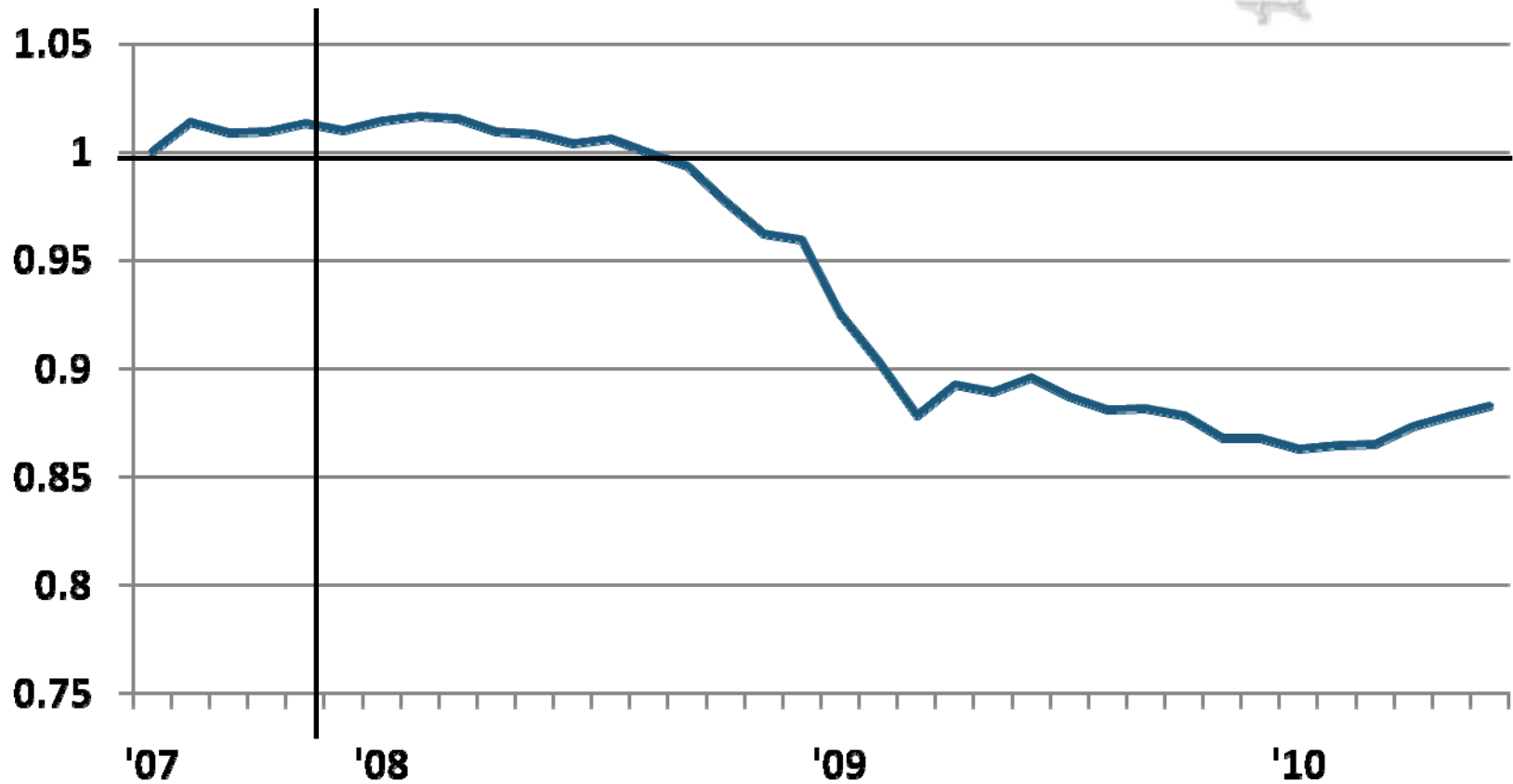


Annual Percent Change in Nonfarm Labor Income (in Constant Dollars) , 2008-2009

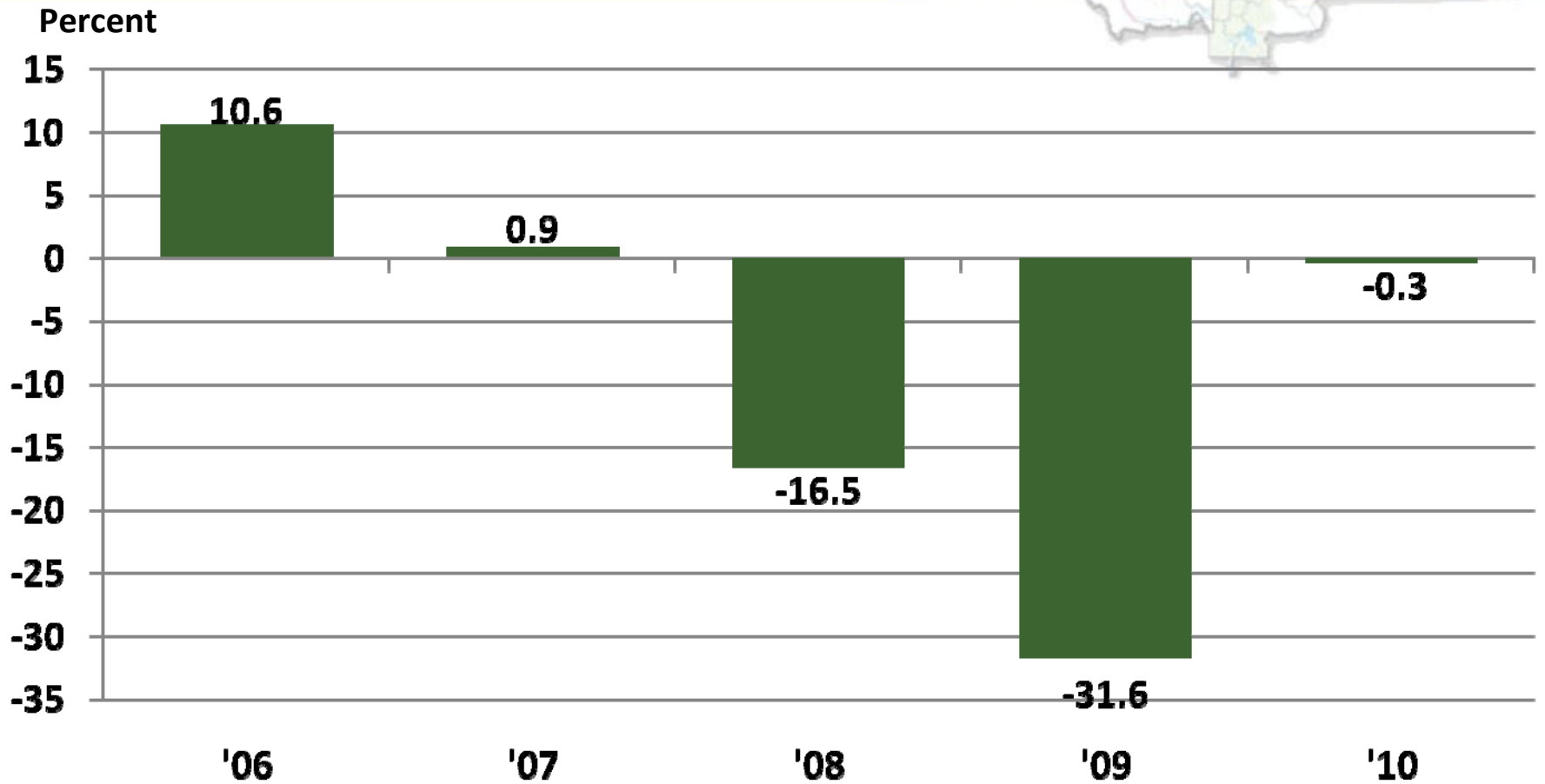


Nonfarm Employment (Seasonally Adjusted), Flathead County

Recession Declared, Dec. 2007



Annual Percent Change in Construction Labor Income (in Constant Dollars), Flathead County






Flathead County's Economic Base 2008-2010

- Other Basic 8%
- Primary Metals 2%
- Transportation 7%
- Trade Center 13%
- Other Manufacturing 16%
- Federal Government 16%
- Nonresident Travel 20%
- Wood Products 18%

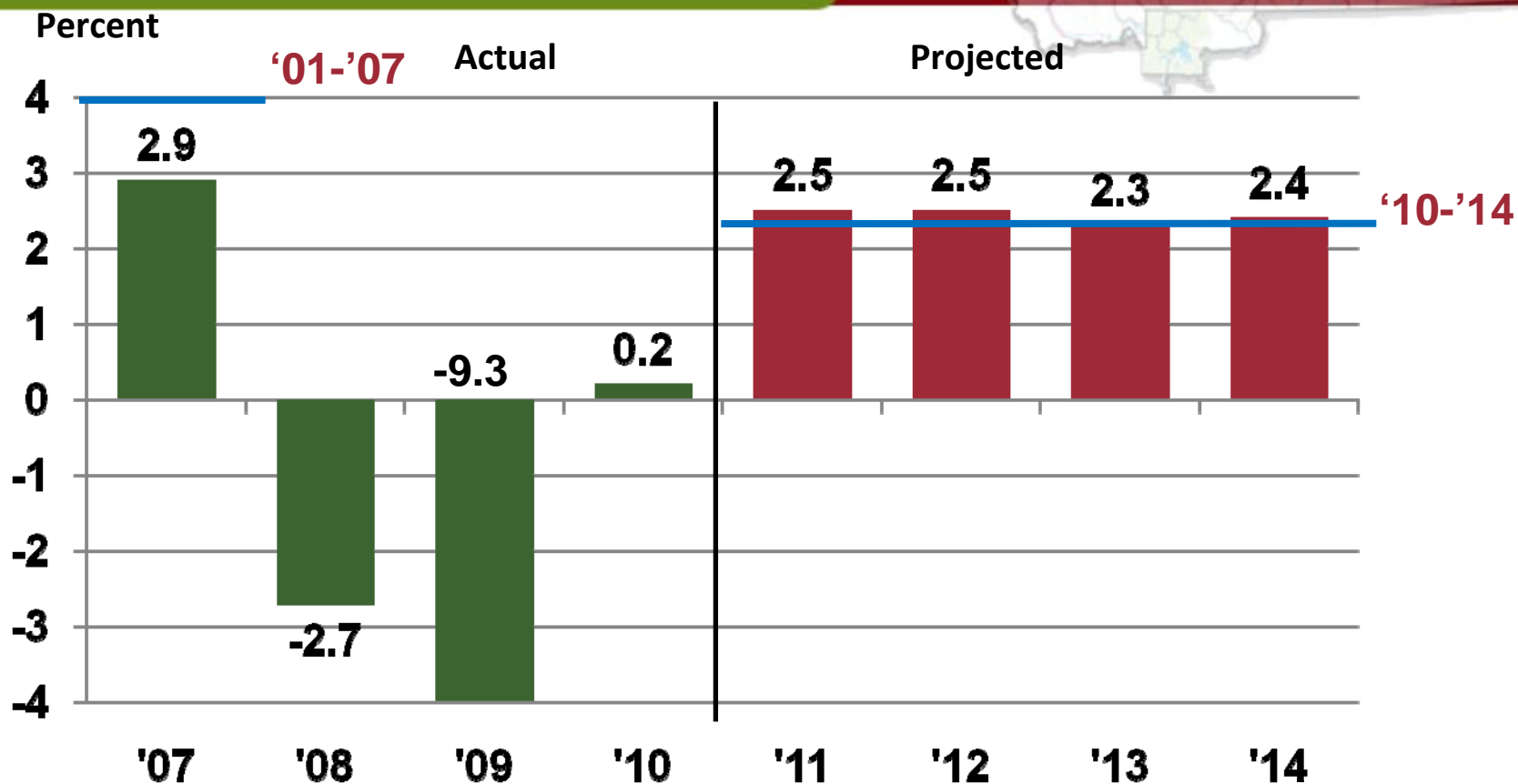
Construction



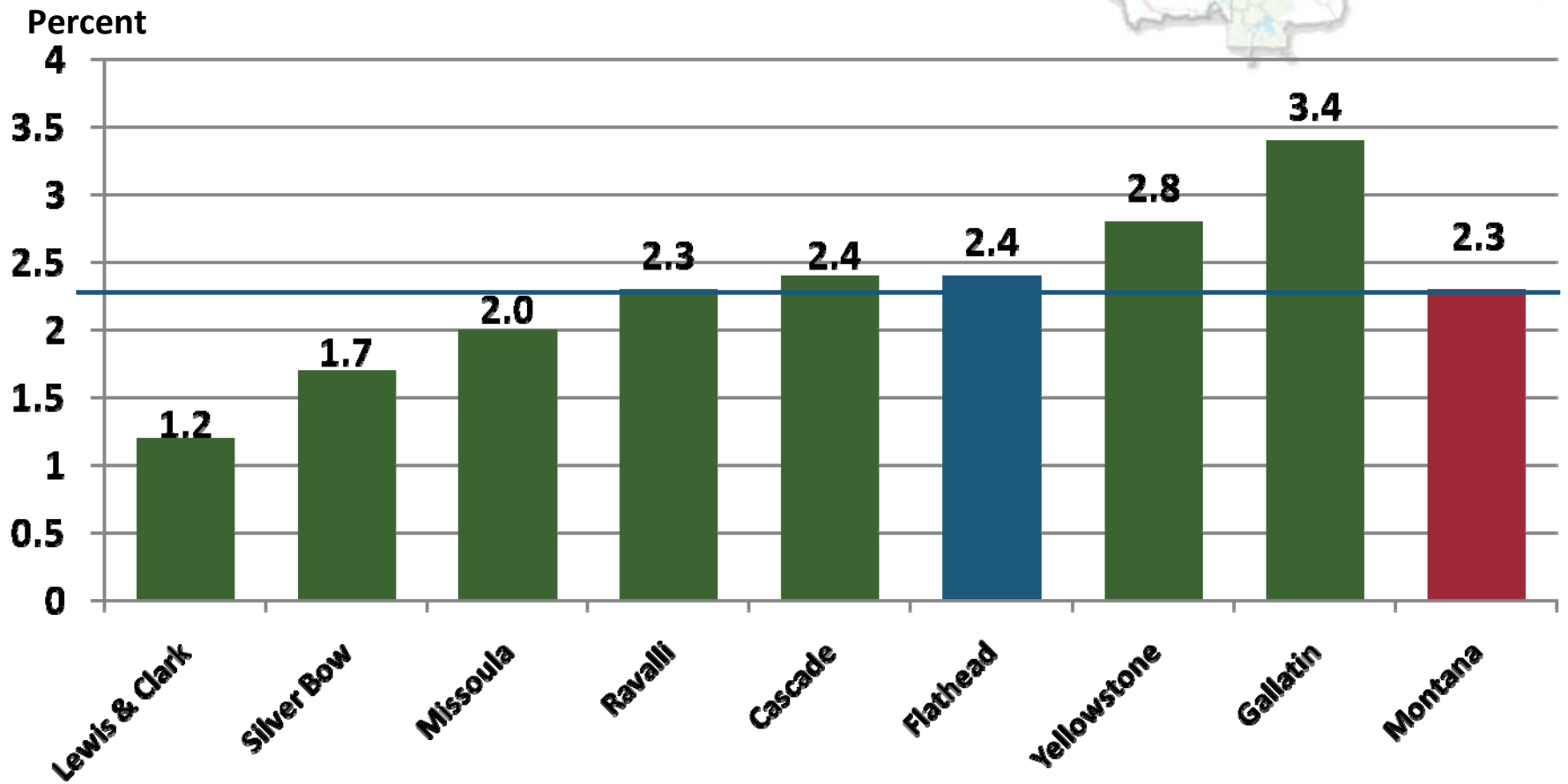
CFAC Close
Slow Growth
?
Some Growth
Stable at Best
Slow Growth
Bottom?

Slow Recovery

Actual and Projected Change in Nonfarm Labor Income, Flathead County, 2007-2014



Projected Annual Percent Change in Nonfarm Labor Income (in Constant Dollars) 2010-2014



Questions?