

Flathead Valley Economic Outlook

February 2015



Flathead Valley Economy

- 1,574 jobs added to Flathead Co. economy 2014
- 3% to 3.5% annual US GDP growth (US Chamber)2015
- Lower energy costs
- Inflation in check
- Recovery of construction and real estate



Threats

- Weakening Canadian dollar
- Slowing in China and Europe
- International conflicts
- Healthcare confusion
- Interest rate rise

Flathead County Unemployment Rate and Labor Force, 2004-2014



64th Legislative Session

- Business equipment tax reduction
- Responsible development of natural resources
- Diverse, affordable, sustainable energy production
- Transportation investment



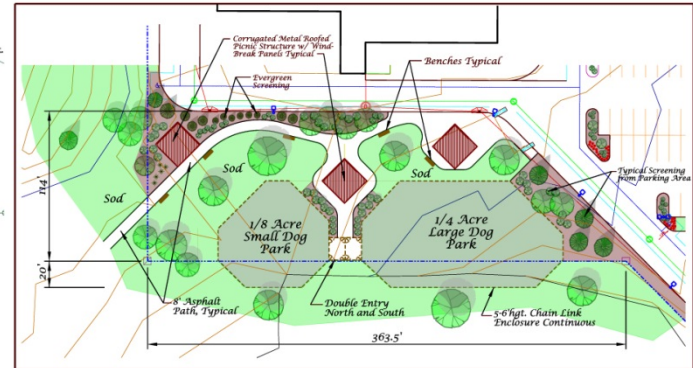
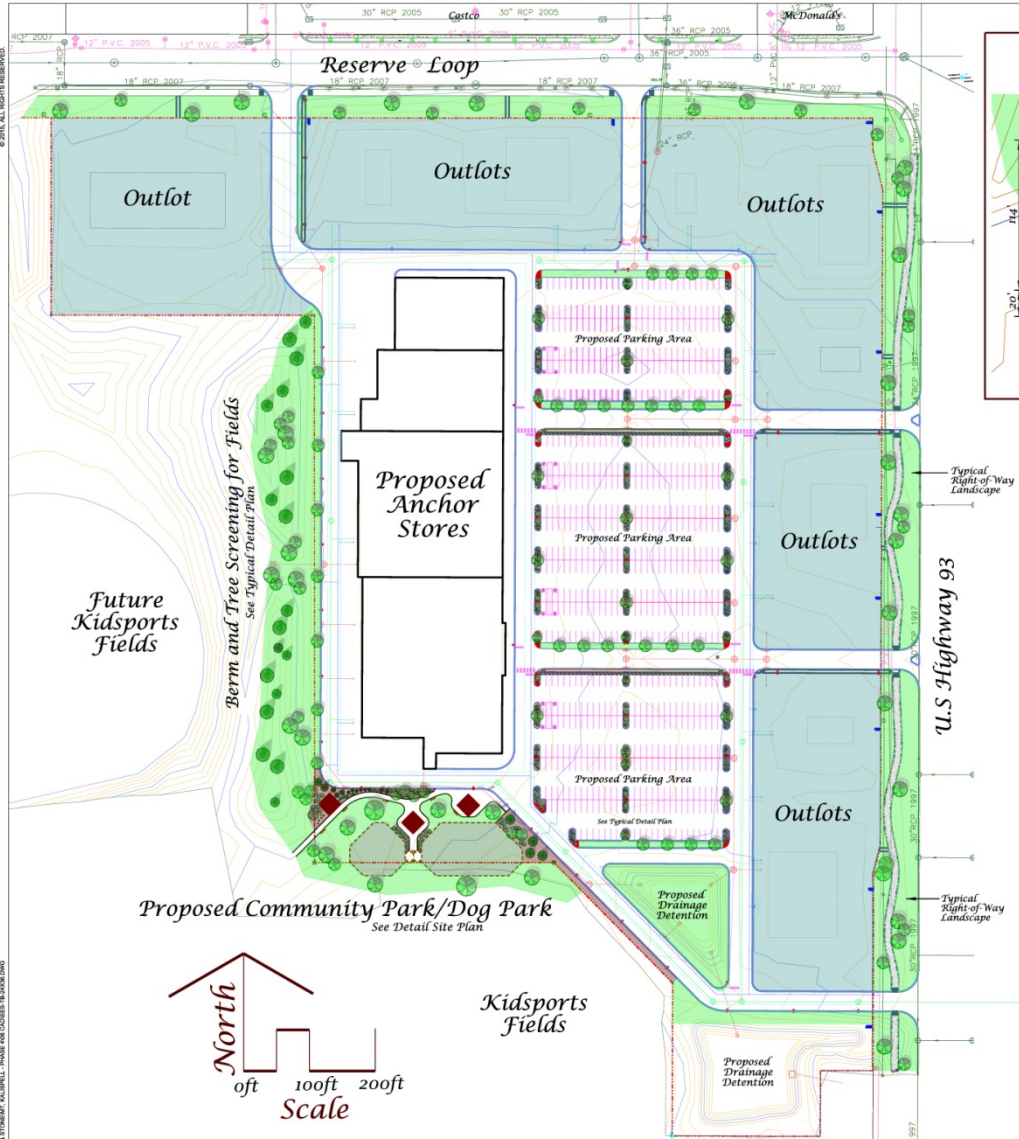
Regional Trade Center

- Kalispell continues to grow as NW MT trade center adding 150,000 sq feet of retail - 2014
- Retail, healthcare, education, county government, finance
- Growth climate local, state, and federal legislators
- KRM is 2,965 employees.
- FVCC is expanding curriculum and connections

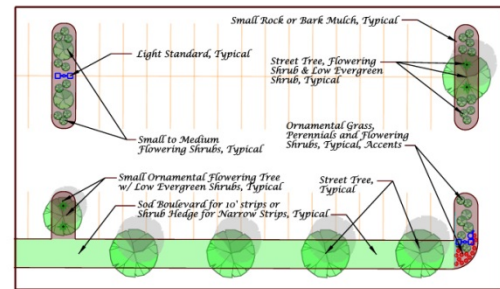
Spring Prairie Phase IV

- 263,454 Square Feet
- 14 Buildings on 28 Acres

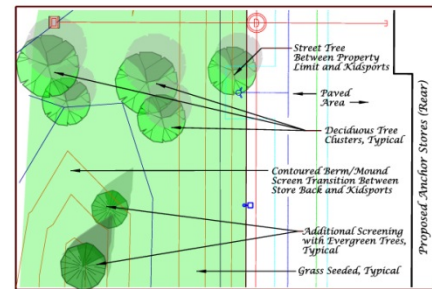
Spring Prairie Phase IV



Detail Site Plan: Community Park
Scale: 1"=40'



Typical Detail Plan: Parking Lot Planting
Scale: 1"=20'



Typical Detail Plan: Kidsports Screening
Scale: 1"=20'

© 2014, ALL RIGHTS RESERVED.

PROJECT NO: FL0001.01
 DESIGNED BY: BFL
 DRAWN BY: BFL
 DATE: 01.08.14

REVISION

FLORIAN & STONE

PRELIMINARY PLAN SET
 TKG SPRING PRAIRIE DEVELOPMENT FOUR
 MADISON, INDIANA
 PUD SCHEMATIC LANDSCAPE PLAN

L1.0

Downtown Kalispell

- Now is the time to focus on central business district
- Bypass Complete 2016
- Support City on Core Plan, Rail Park
- Courthouse Couplet and Main Street



Manufacturing and Technology



- Continued growth in Wineries, Breweries and Distilleries, gun manufacturers, and more
- Fully develop Manufacturers Alliance
- Partner with High Tech Business Alliance
- Advance policy agenda

Infrastructure

- Fully fund highway and aviation bills
- Keep pushing airline service: Chicago, L.A, Portland
- Build capacity in sewer, water, and broadband
- Finish the Bypass



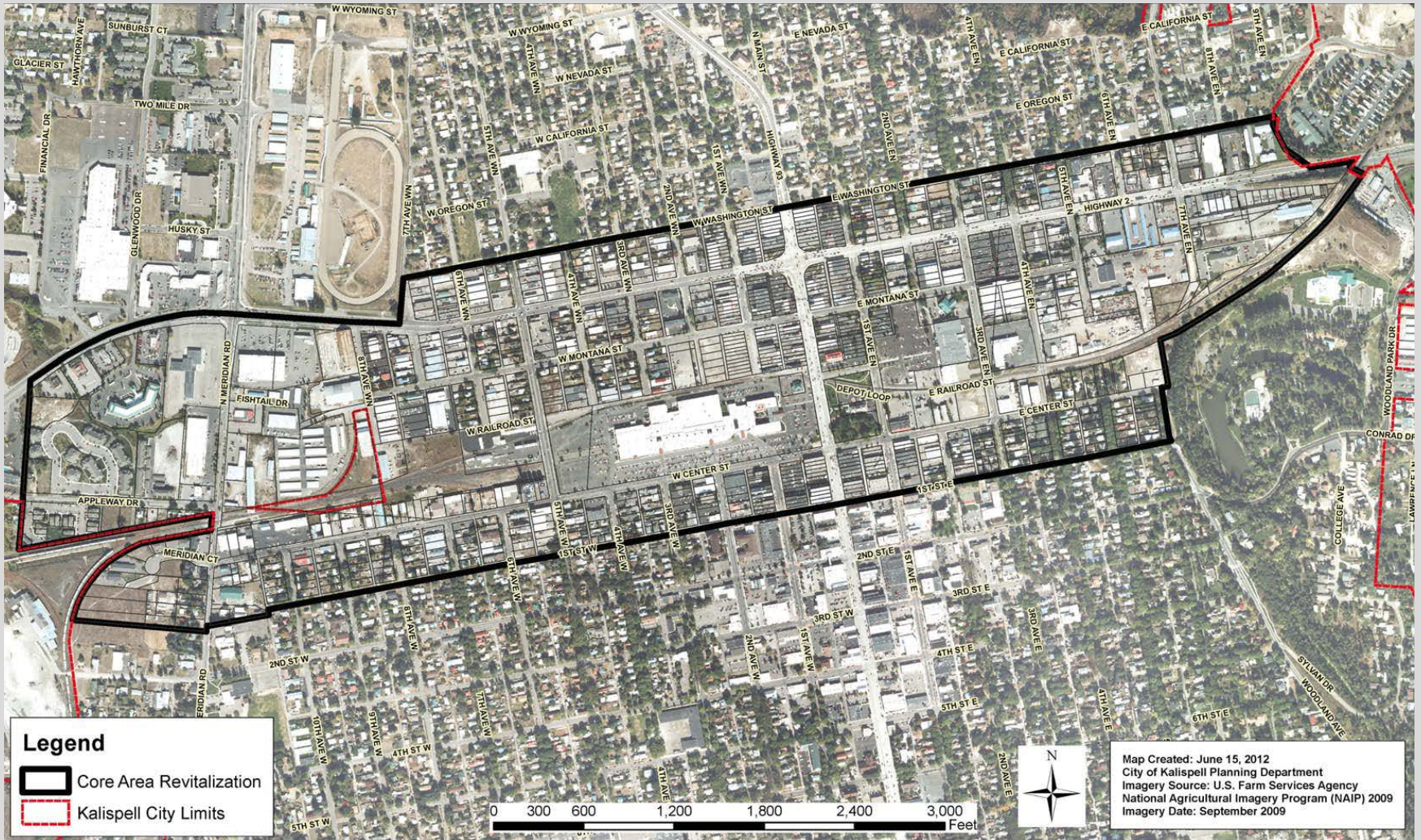
Trade and Tourism

- Help Kidsports complete complex
- HB 204 Revises laws relating to liability waivers and releases
- SB 244 Establish a Montana trade office in Calgary
- Innovative events and bolder marketing campaigns

Other Projects to look for 2015

- Spring Prairie
- The Rock
- Oncology Center
- Flathead Brewery
- Averill Hotel
- Toggery
- Rail Park

Core Area plan



Flathead Lake Brewery Company Pubhouse



Rail Park

