

COLLABORATE. GENERATE. THRIVE.



Economic Outlook Seminar
January 31, 2014



FACTORS SLOWING MISSOULA ECONOMIC RECOVERY

Source:

“Prospects for the Missoula Area Economy
in 2014”

by Larry Swanson, Director
O’Connor Center for the Rocky Mountain
West

- **Hospital** personnel cutbacks will moderate growth in healthcare employment and labor earnings. (Largest generator of labor income and growth in the last two years.)
- **University of Montana** is forced to cut its budget by enrollment declines. These cuts will negatively impact the economy.

FACTORS SLOWING MISSOULA ECONOMIC RECOVERY

- Construction in 2006 generated labor earnings of \$220 million. This fell to \$180 million in 2012. Construction is up in 2013, but recovery in this sector will take time.

Source:

“Prospects for the Missoula Area Economy in 2014”

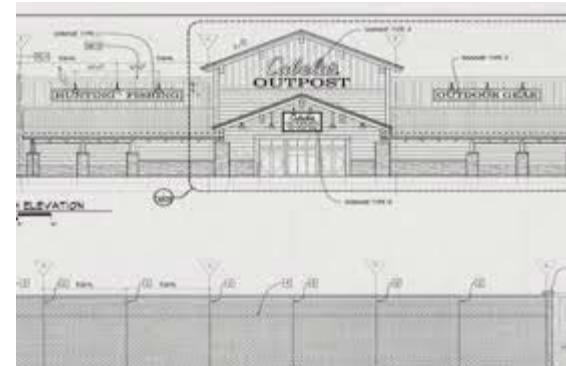
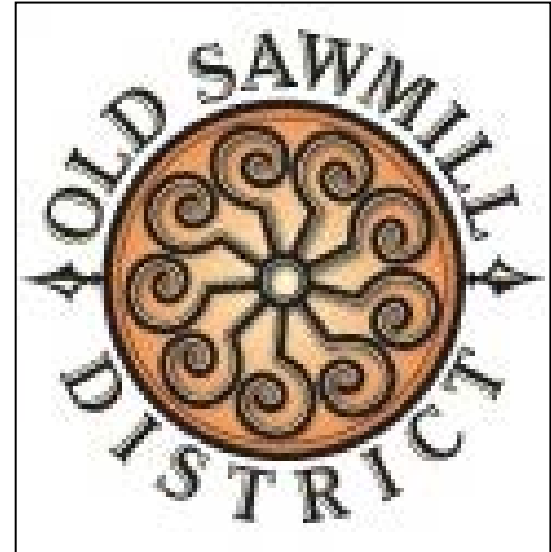
by Larry Swanson, Director
O’Connor Center for the Rocky Mountain
West

COMMERCIAL DEVELOPMENT



Riverfront
Triangle

COMMERCIAL DEVELOPMENT



South Crossing Shopping Cent

2014
YEAR OF THE
START-UP

QUANTPOST



Blackstone LaunchPad

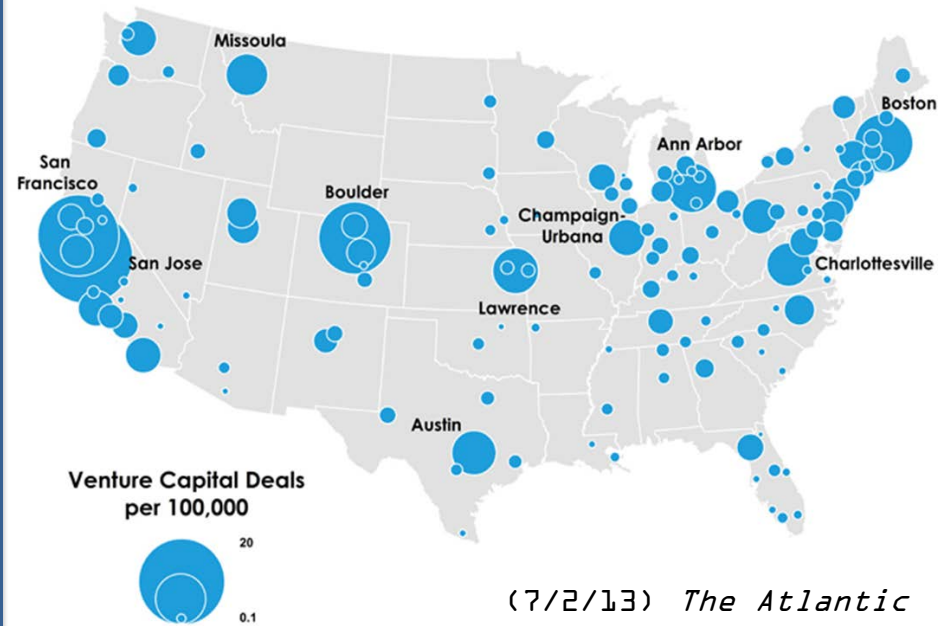


RMIBIO

JOHN RUFFATTO
Annual Business
Plan Competition



2014 YEAR OF THE START-UP



BIG DATA & CYBER- SECURITY

- UM Cybersecurity Lab
- Blackfoot
Telecommunications &
MonTEC
- Missoula Big Data
Alliance

THANK YOU
CONTACT US

Missoula Economic Partnership

406-541-6461

James Grunke

President & CEO

Brigitta Miranda Freer

Director of Business
Development

Melanie Brock

Director of Strategic
Initiatives

Desirée Starkey  **MISSOULA**
ECONOMIC PARTNERSHIP