

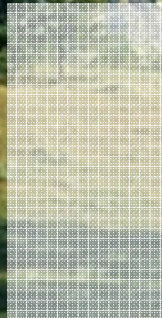
# Local Outlook: Gallatin County

By Paul E. Polzin

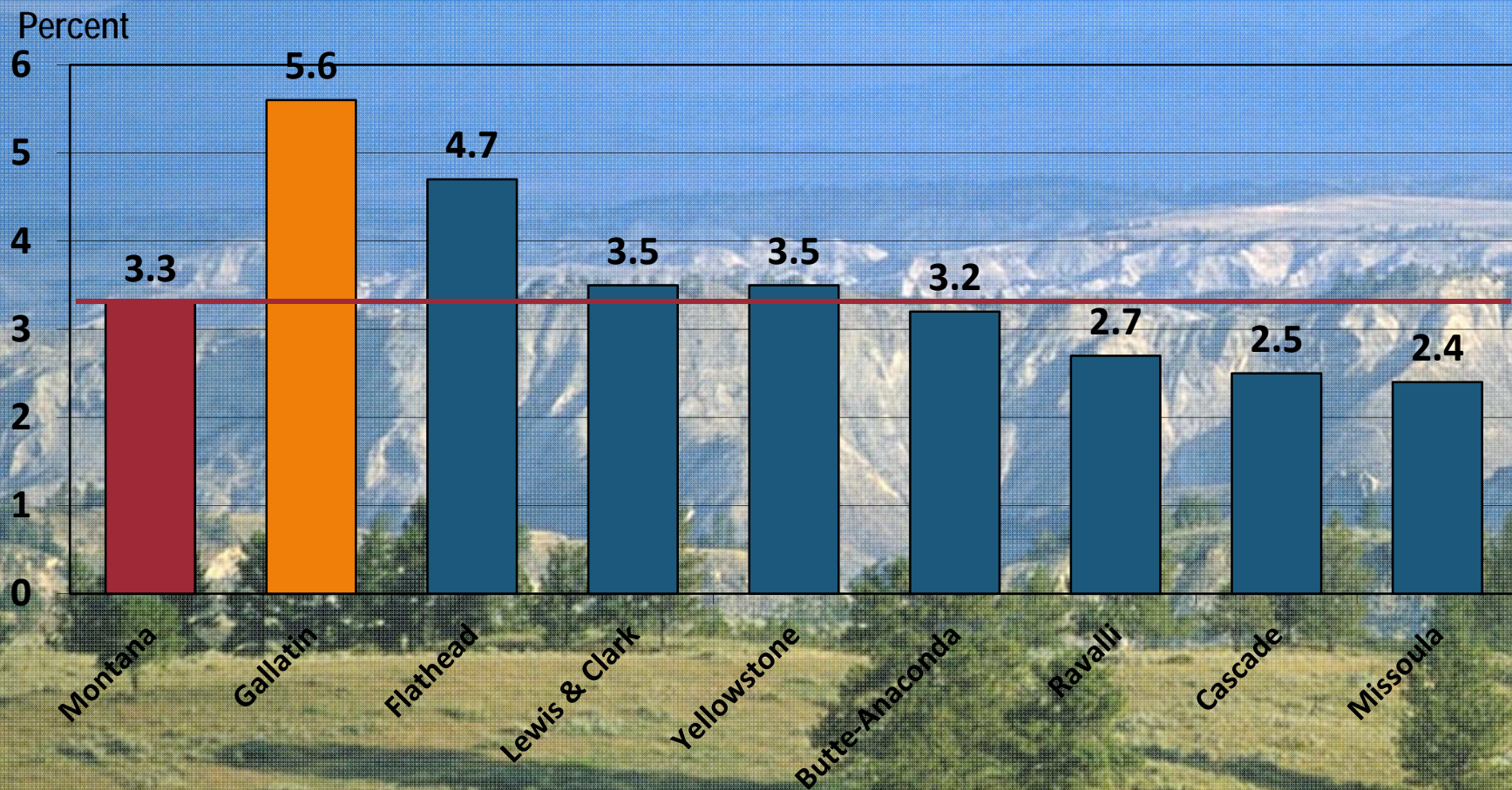
Director Emeritus

Bureau of Business and Economic Research

The University of Montana



## Annual Percent Change in Nonfarm Labor Income (in Constant Dollars), 2001-2007

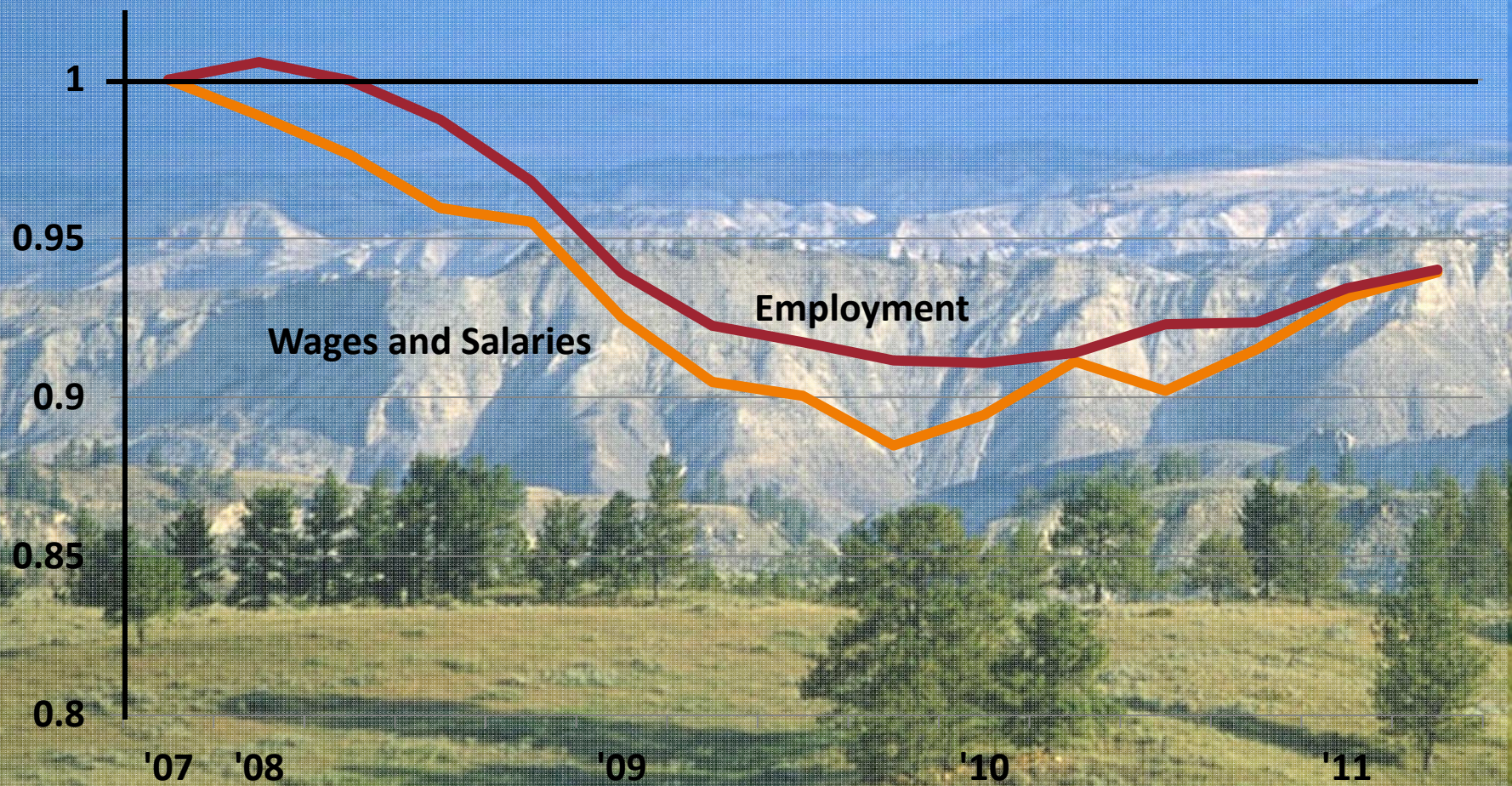


# Recession Scorecard

	Duration (Years)	Severity (% Change)
Lewis & Clark County	<b>What Recession?</b>	
Cascade County		
Yellowstone County	1	-1.5%
Butte - Anaconda	1	-0.8%
Missoula County	3-4	-4.9%
Gallatin County	2	-7.9%
Flathead County	4	-10.2%
Ravalli County	4	-11.4%

# Non-Farm Employment and Inflation Adjusted Wages and Salaries, Seasonally Adjusted, Gallatin County

Recession Declared, Dec. 2007



# Gallatin County's Economic Base 2009-2011

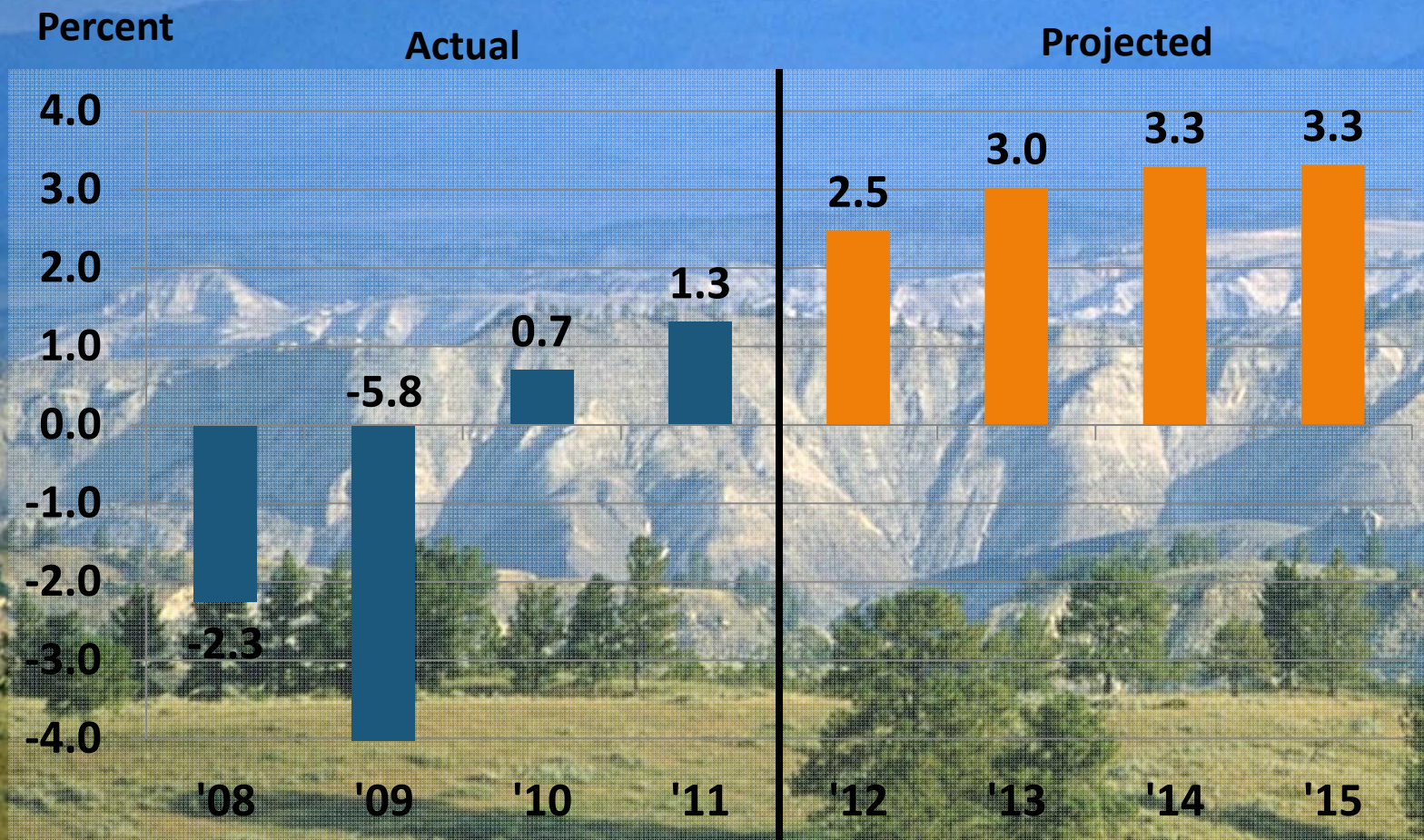
• Other Basic Industries	6%	
• Federal Government	10%	Stable at Best
• Nonresident Travel	11%	Some Recovery
• Trade Center *	24%	RightNow's Future?
• Manufacturing	18%	Stable
• MSU and State Gov't	31%	Pay Freeze, Increased Research

## Construction

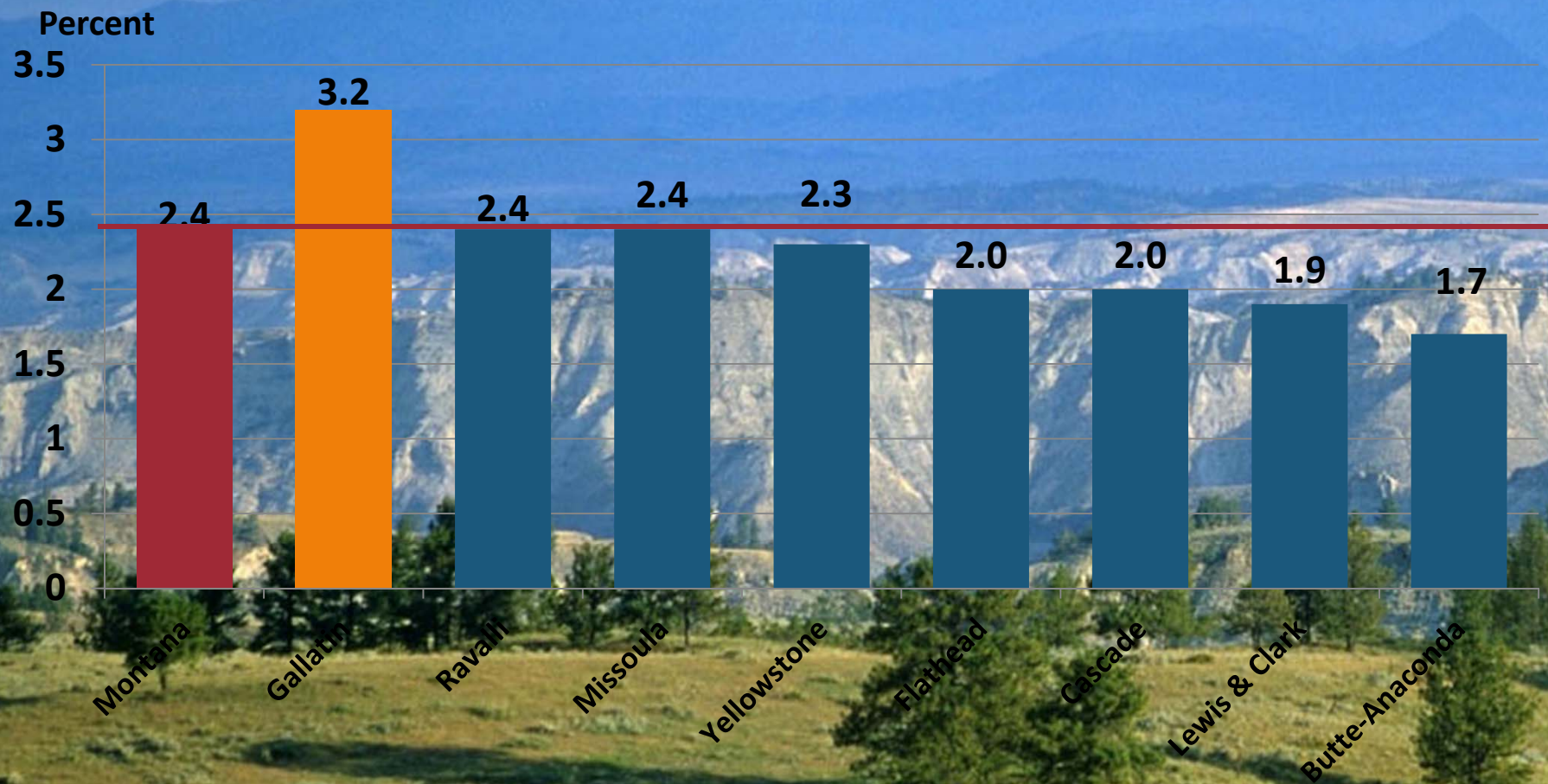
\* Including professional services

Not Before 2013

# Actual and Projected Change in Nonfarm Earnings, Gallatin County, 2008-2015



## Projected Annual Percent Change in Nonfarm Labor Income (in Constant Dollars) 2011-2015



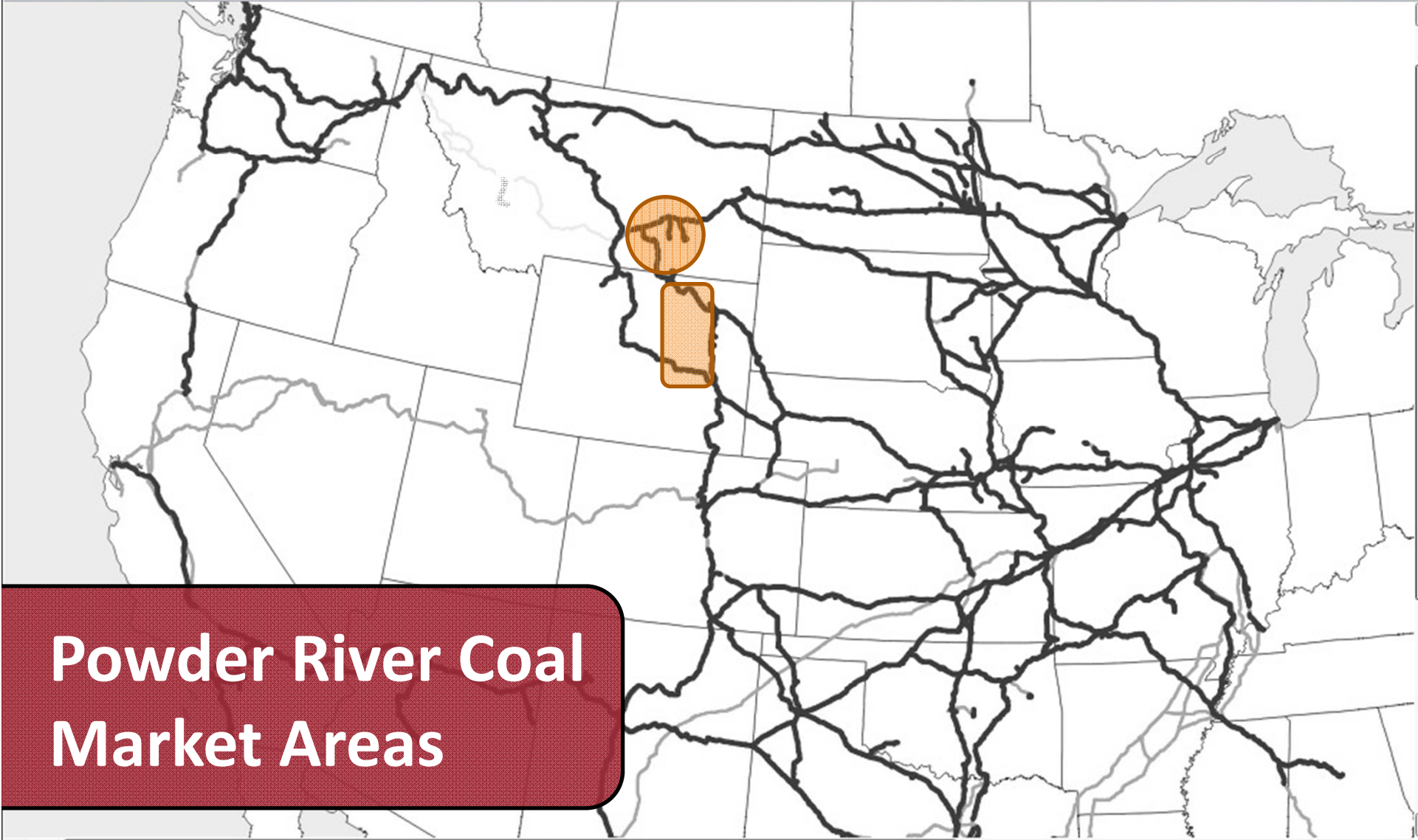
# Montana's Energy Transportation Systems





# Coal Reserves and Production

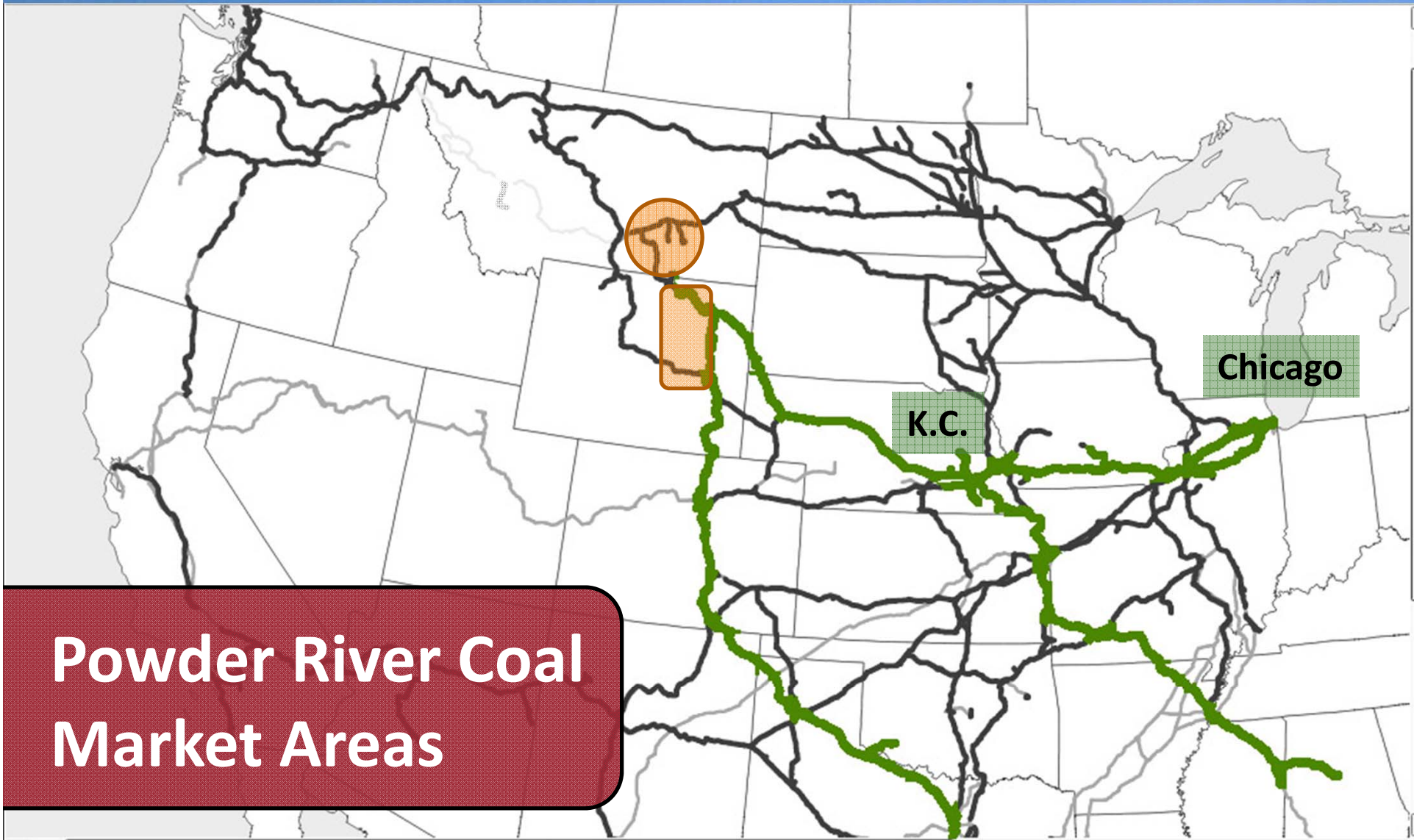
	Reserves (Billions of Tons)	
<b>Montana</b>	<b>119.0</b>	
<b>Wyoming</b>	<b>61.0</b>	



**Powder River Coal  
Market Areas**



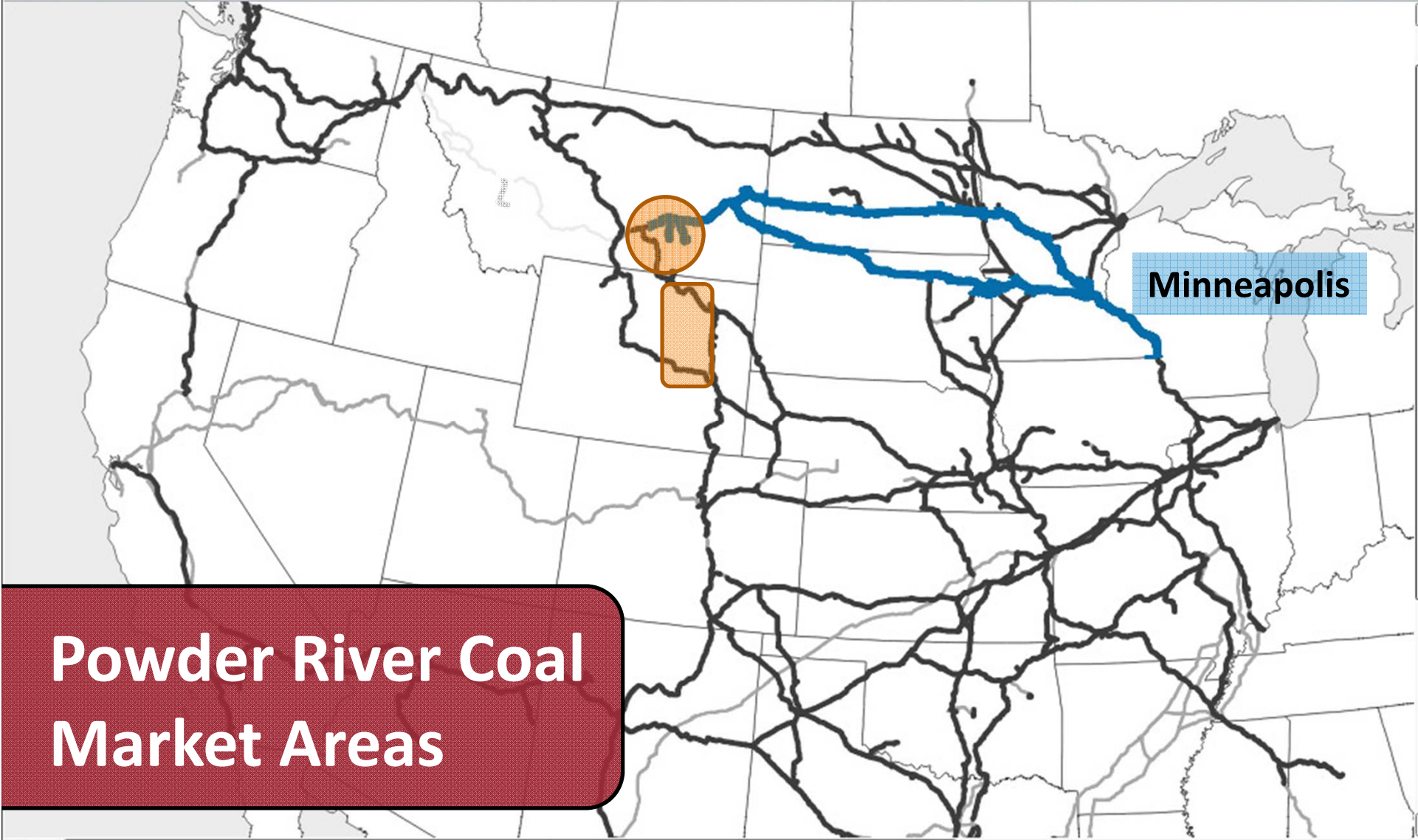
# Powder River Coal Market Areas



Chicago

K.C.

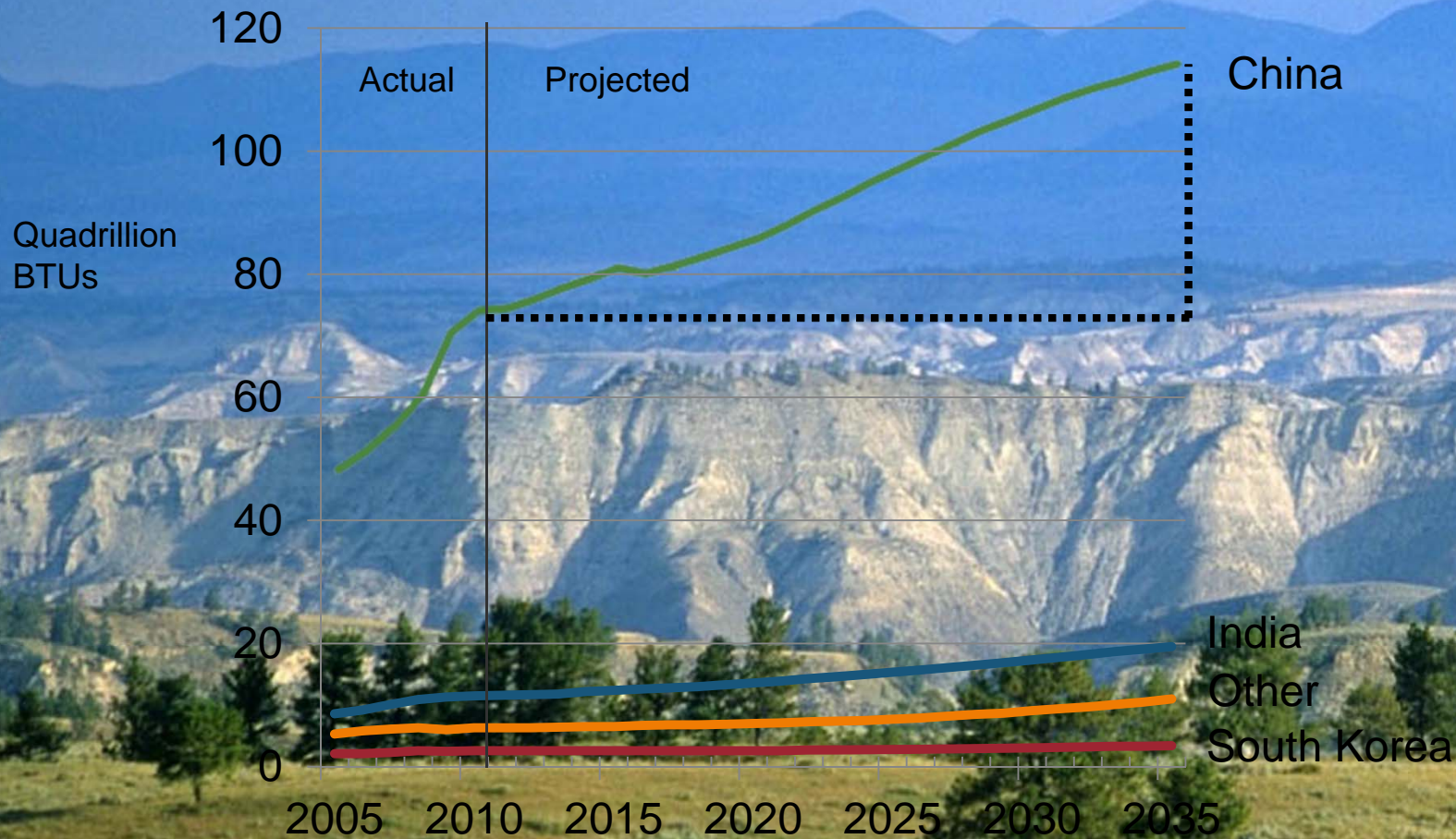
Houston



**Powder River Coal  
Market Areas**



# Actual and Projected Asian Coal Consumption



Sources: History: U.S. Energy Information Administration, International Energy Statistics database

Vancouver

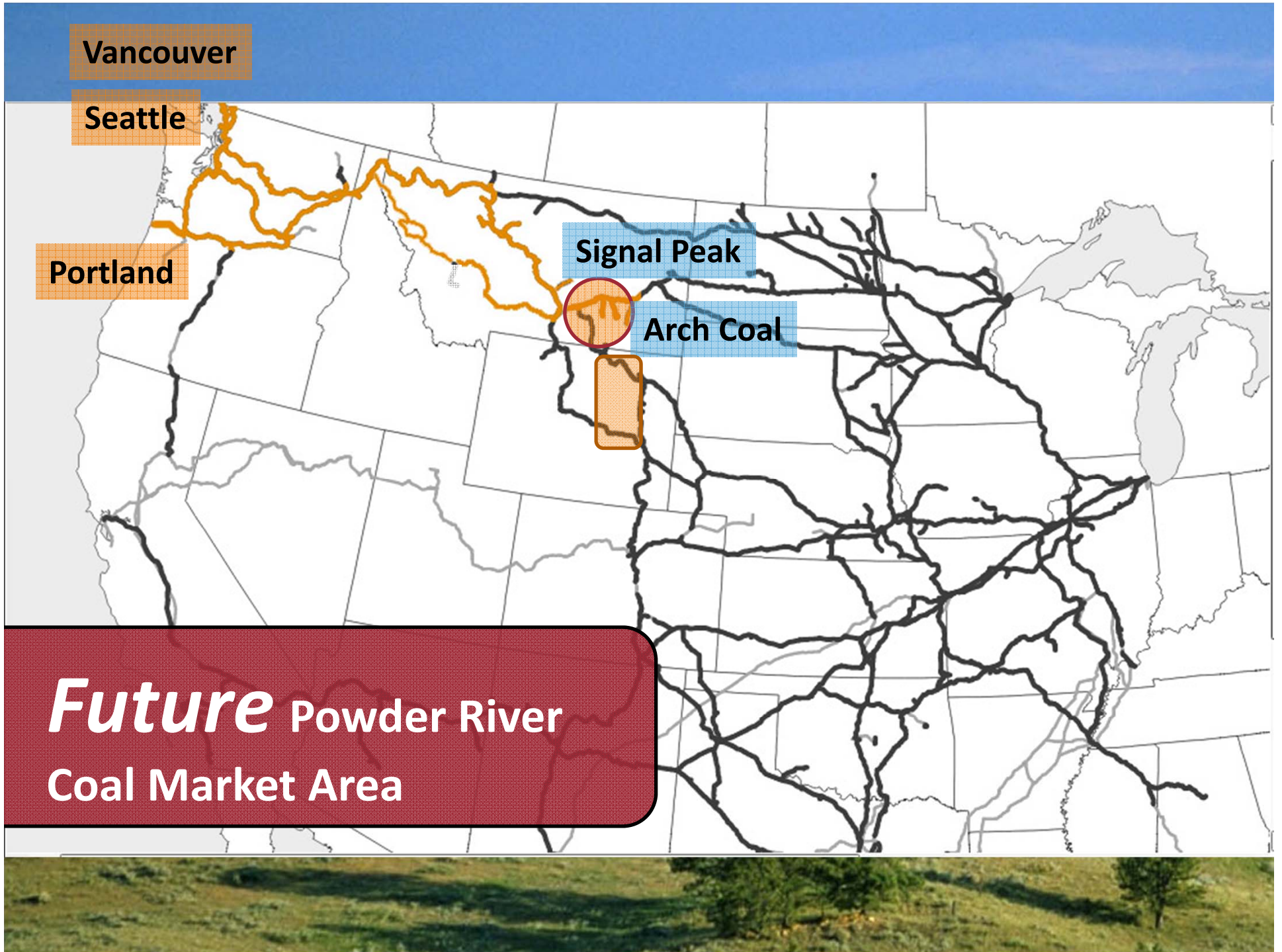
Seattle

Portland

Signal Peak

Arch Coal

*Future* Powder River  
Coal Market Area

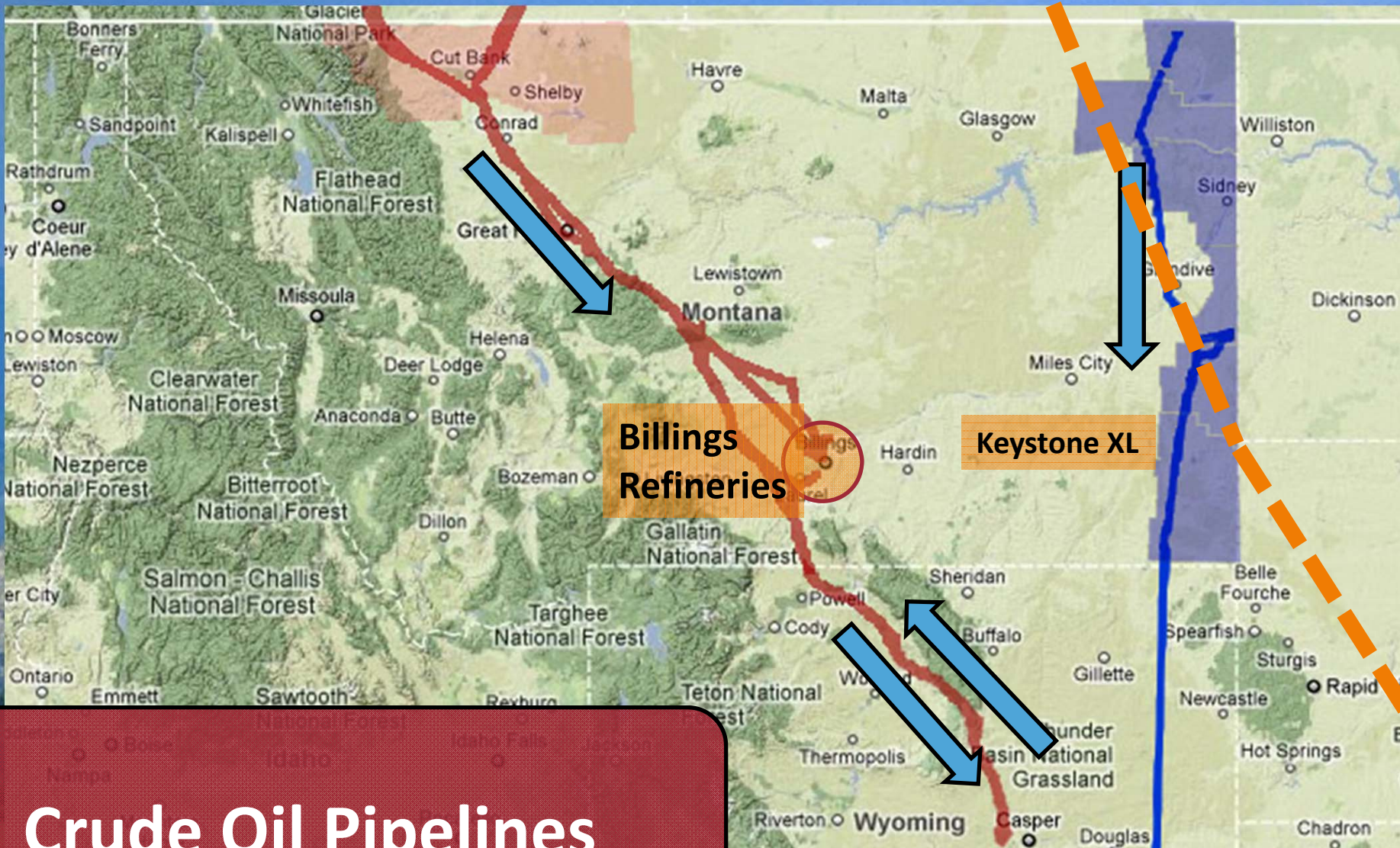


# Montana Crude Oil, 2010

	Barrels

Source: Montana Oil and Gas Conservation Division.

Edmonton

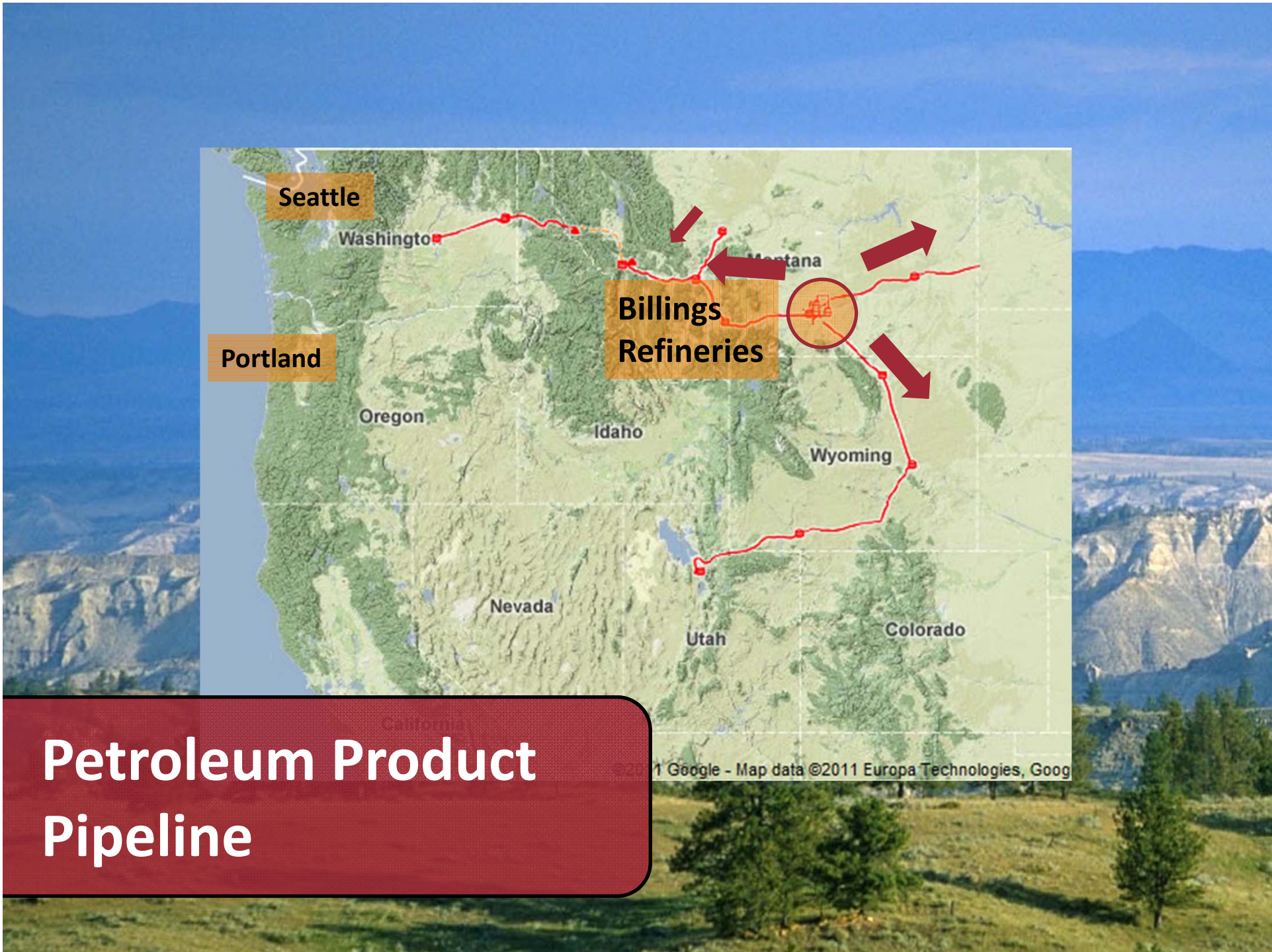


Billings Refineries

Keystone XL

Crude Oil Pipelines





Seattle

Washington

Portland

Oregon

Idaho

Nevada

Utah

Colorado

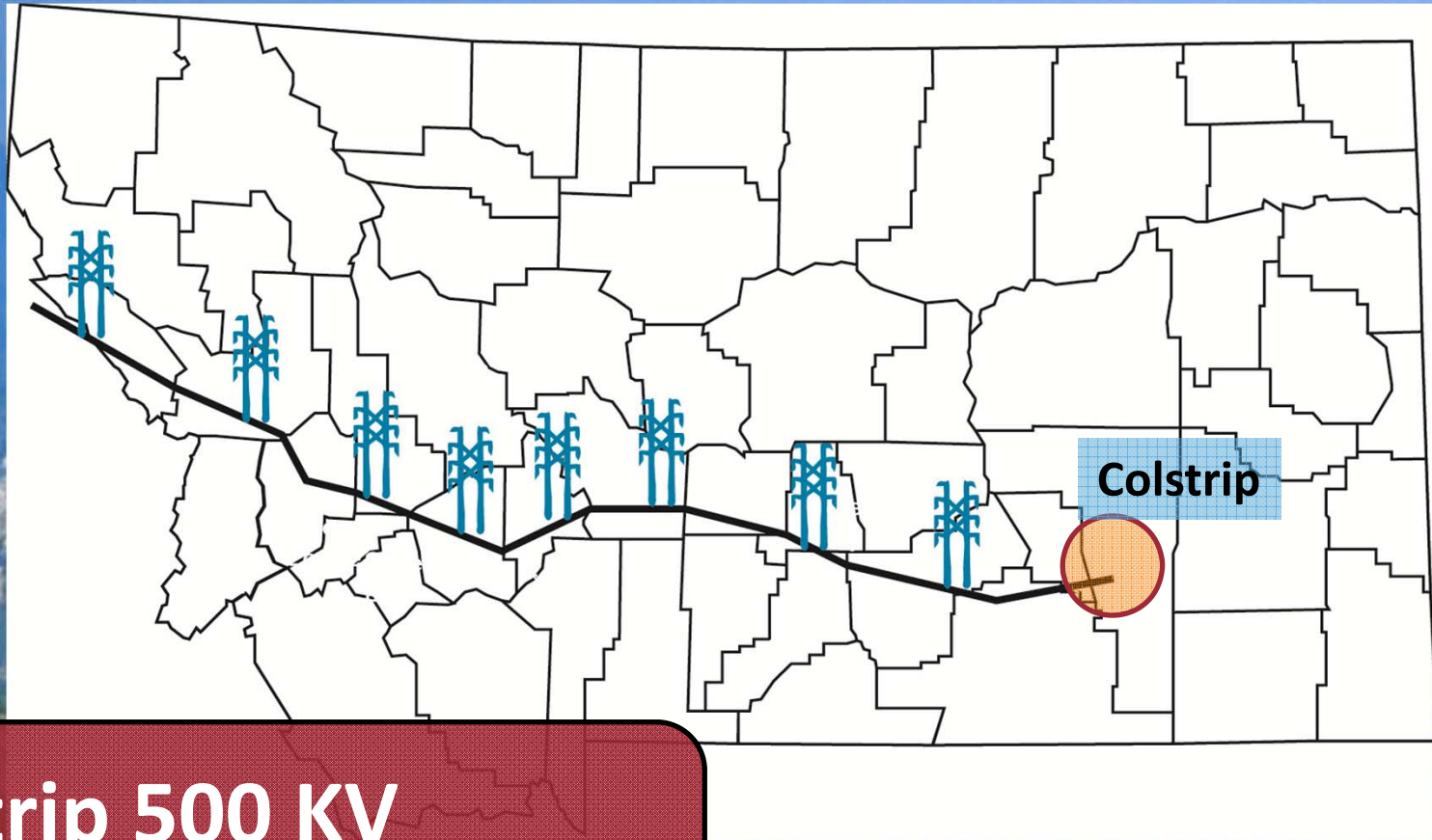
Billings  
Refineries

Montana

Wyoming

# Petroleum Product Pipeline

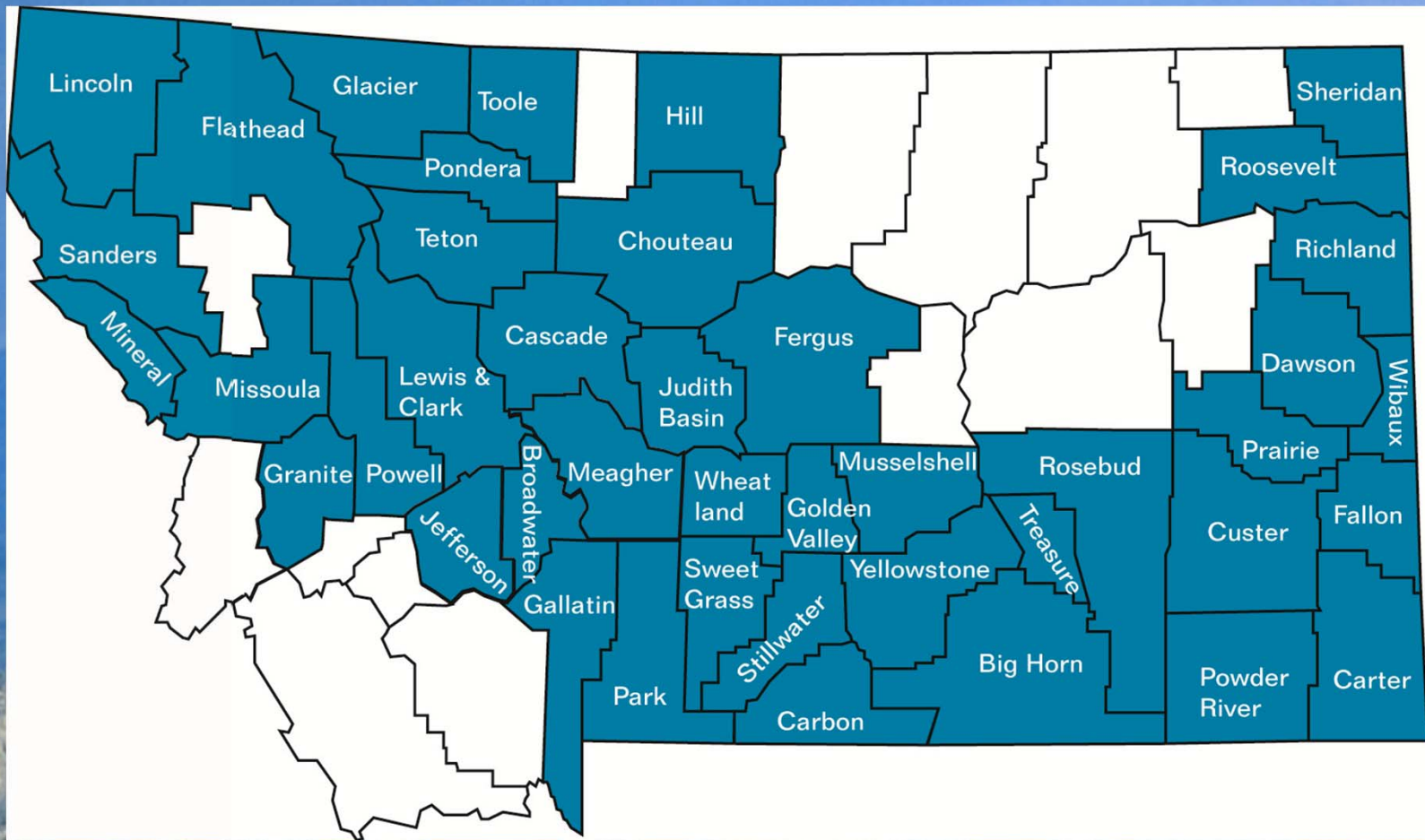
© 2011 Google - Map data © 2011 Europa Technologies, Google



**Colstrip 500 KV  
Transmission Line**

## Transmission Line Property Taxes to Counties

County	Estimated Taxes
Rosebud	\$492,000
Treasure	\$952,000
Big Horn	\$241,000
<b>Yellowstone</b>	<b>\$1,467,000</b>
Golden Valley	\$372,000
Stillwater	\$373,000
Wheatland	\$615,000
Meagher	\$865,000
Broadwater	\$563,000
Jefferson	\$401,000
Powell	\$322,000
Granite	\$401,000
<b>Missoula</b>	<b>\$568,000</b>
Mineral	\$784,000
<b>TOTAL</b>	<b>\$8,417,000</b>



## Montana's Energy Transportation Systems

A scenic landscape photograph showing a mountain range in the background under a clear blue sky. The foreground consists of a grassy field with several green trees. The word "Questions?" is overlaid in white text in the center of the image.

Questions?