

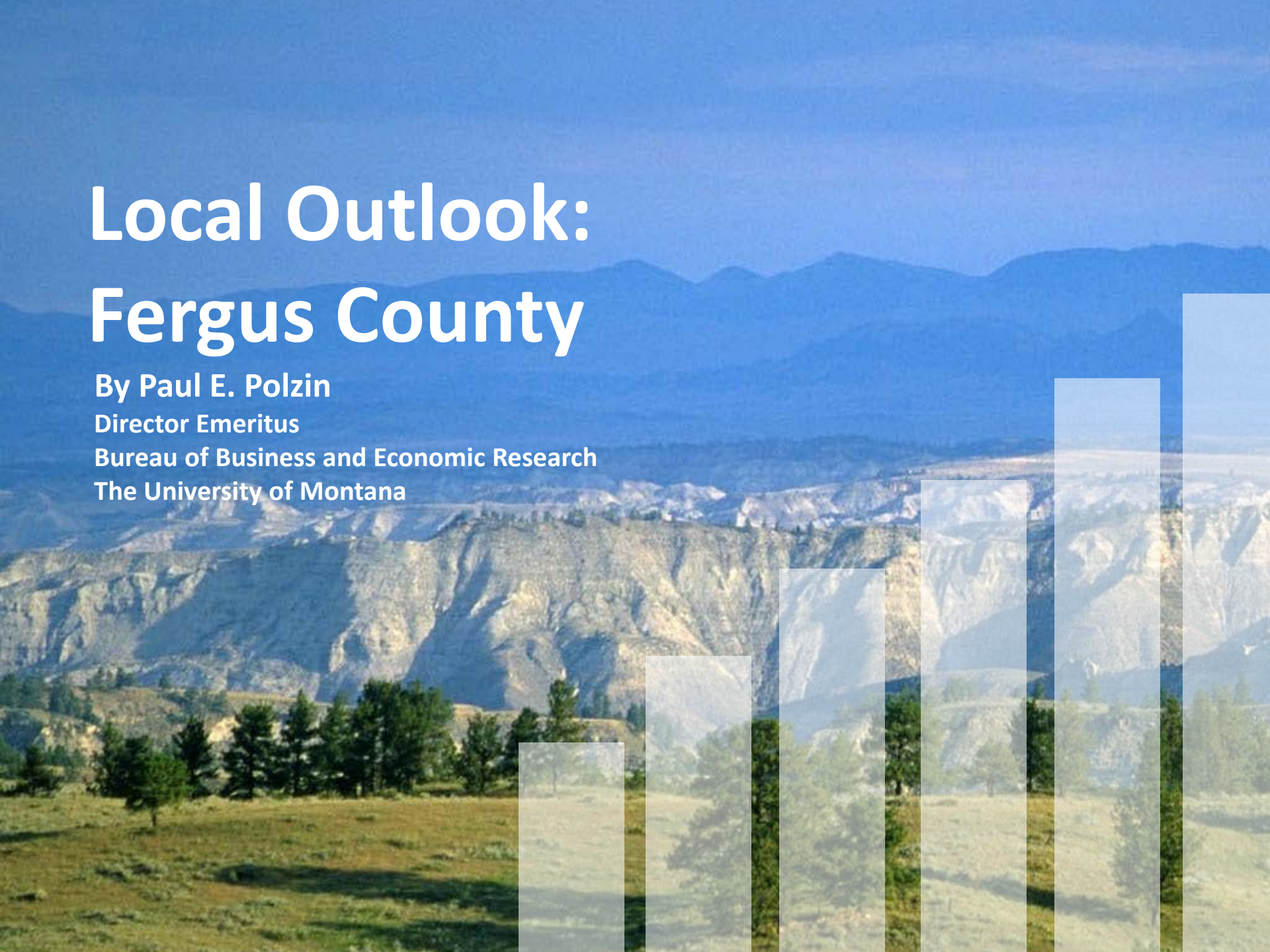
Local Outlook: Fergus County

By Paul E. Polzin

Director Emeritus

Bureau of Business and Economic Research

The University of Montana



Recession Scorecard

	Duration (Years)	Severity (% Change)
Lewis & Clark County	What Recession?	What Recession?
Cascade County		
Hill County	1	-0.4%
Yellowstone County	1	-1.5%
Fergus County	1	-2.0
Missoula County	3-4	-4.9%
Gallatin County	2	-7.9%
Flathead County	4	-10.2%

Fergus County's Economic Base 2009-2011

- Rehabilitation, Travel 8%
- State Government 12%
- Federal Government 20%
- Manufacturing 22%
- Ag and Related 38%

Modest Growth

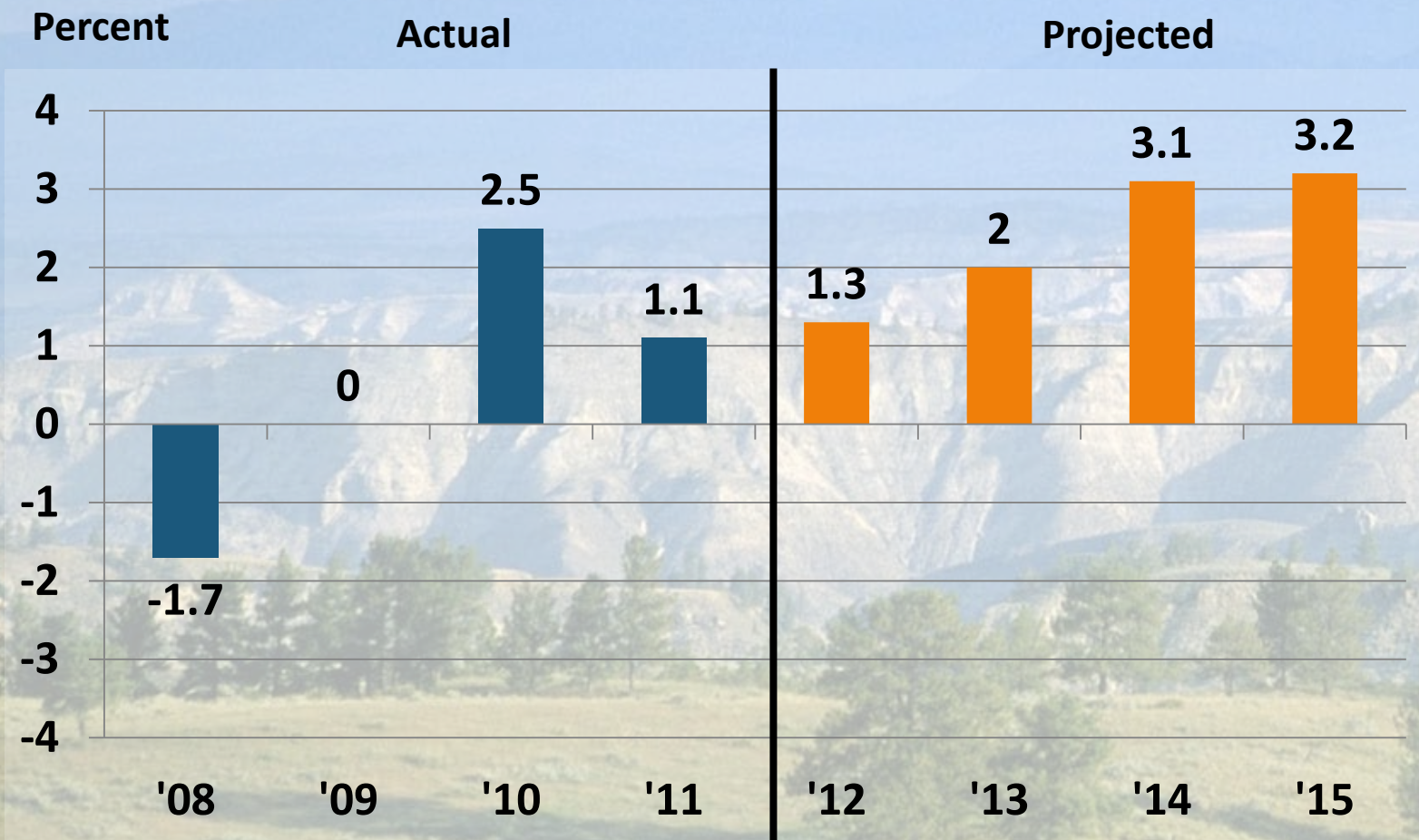
Pay Freeze

Stable, at best

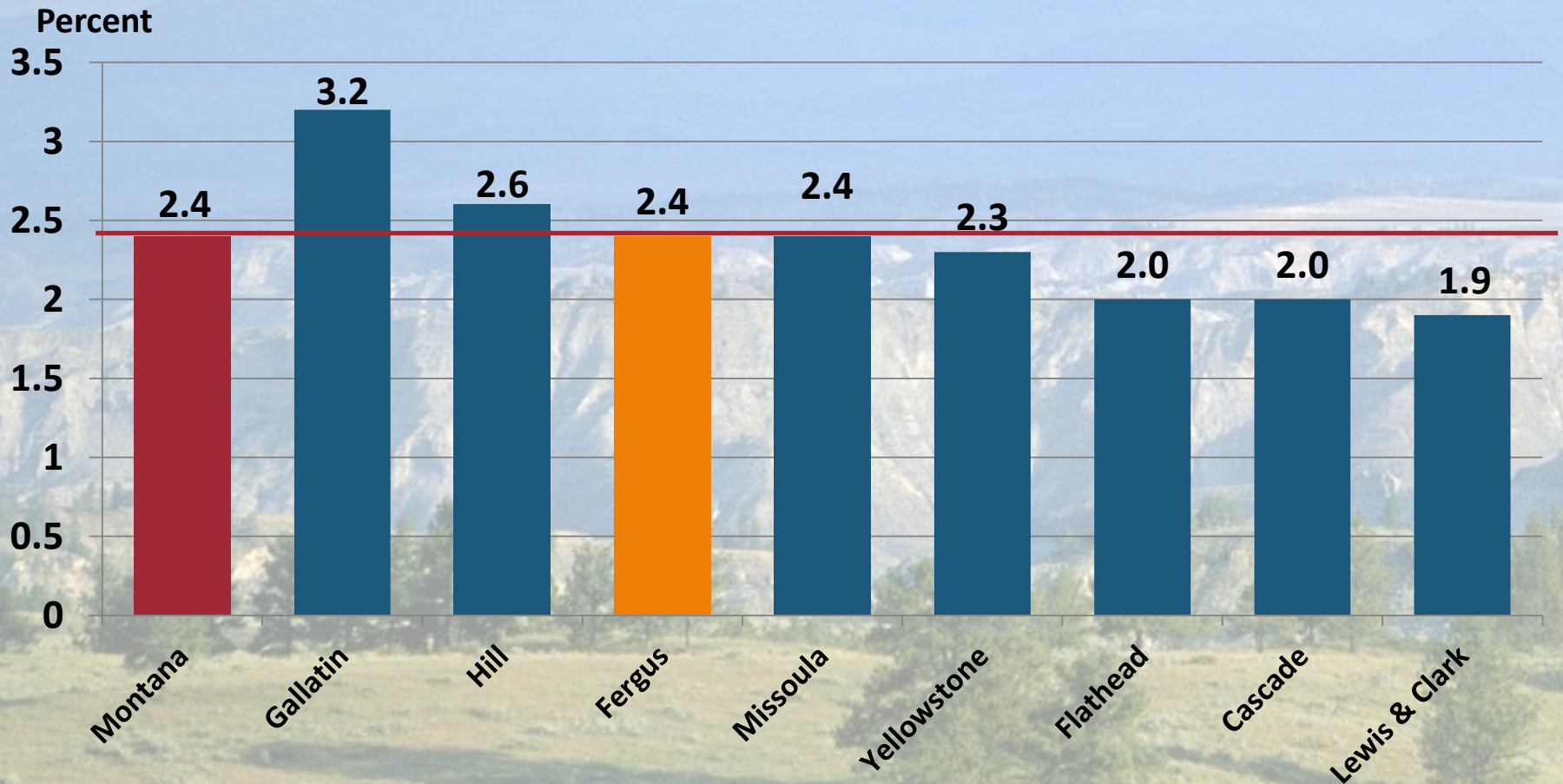
Stable

Continued Strong

Actual and Projected Change in Nonfarm Earnings, Fergus County, 2008-2015



Projected Annual Percent Change in Nonfarm Labor Income (in Constant Dollars) 2011-2015

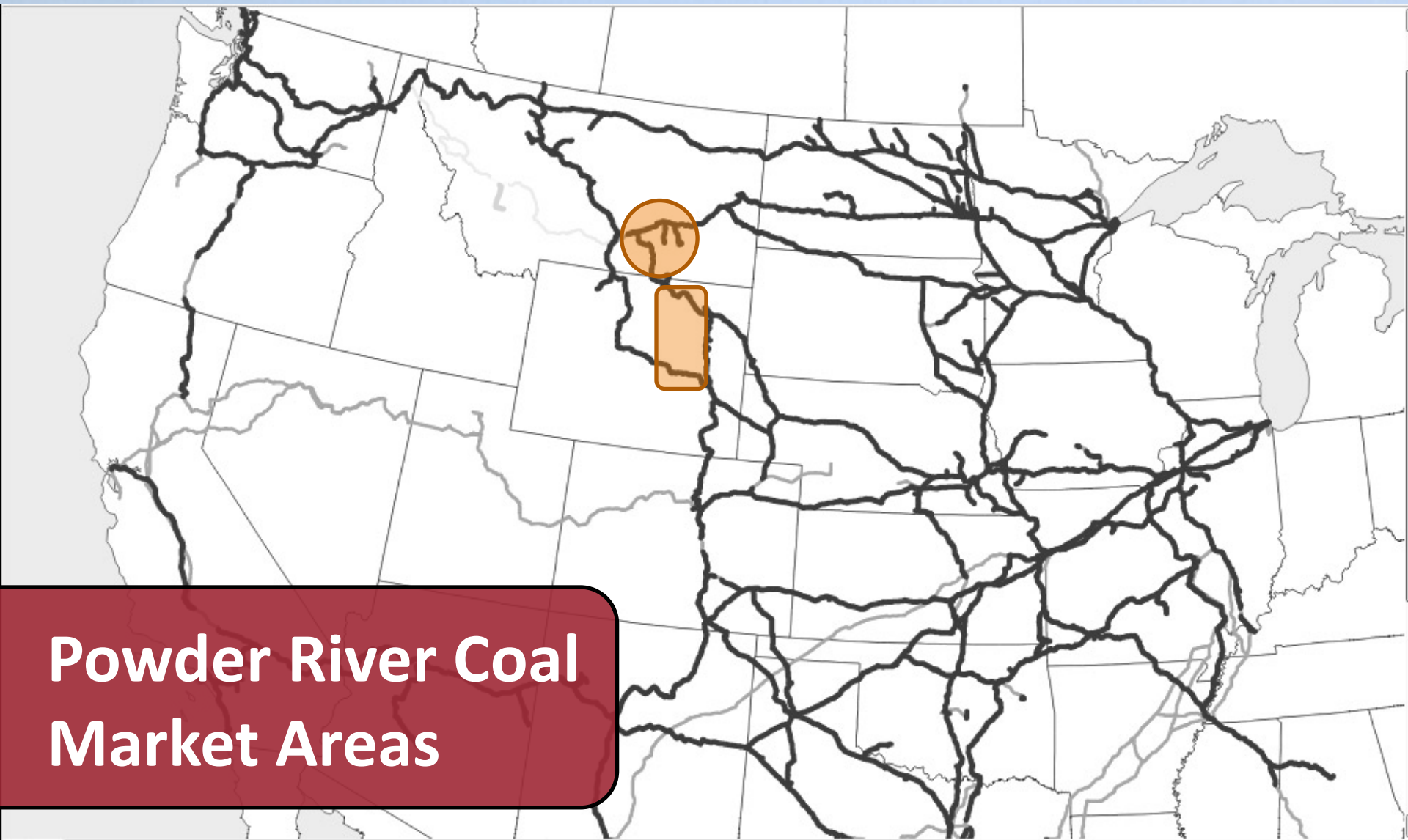


Montana's Energy Transportation Systems

The image shows a wide, scenic view of a Montana landscape. In the foreground, there is a grassy field with several green trees. The middle ground is dominated by a range of rugged, layered rock formations, likely sandstone or limestone, with distinct horizontal strata. The background consists of distant, blue mountains under a clear sky. The text "Montana's Energy Transportation Systems" is overlaid in white on the left side of the image.

Coal Reserves and Production

	Reserves (Billions of Tons)	
Montana	119.0	
Wyoming	61.0	



**Powder River Coal
Market Areas**



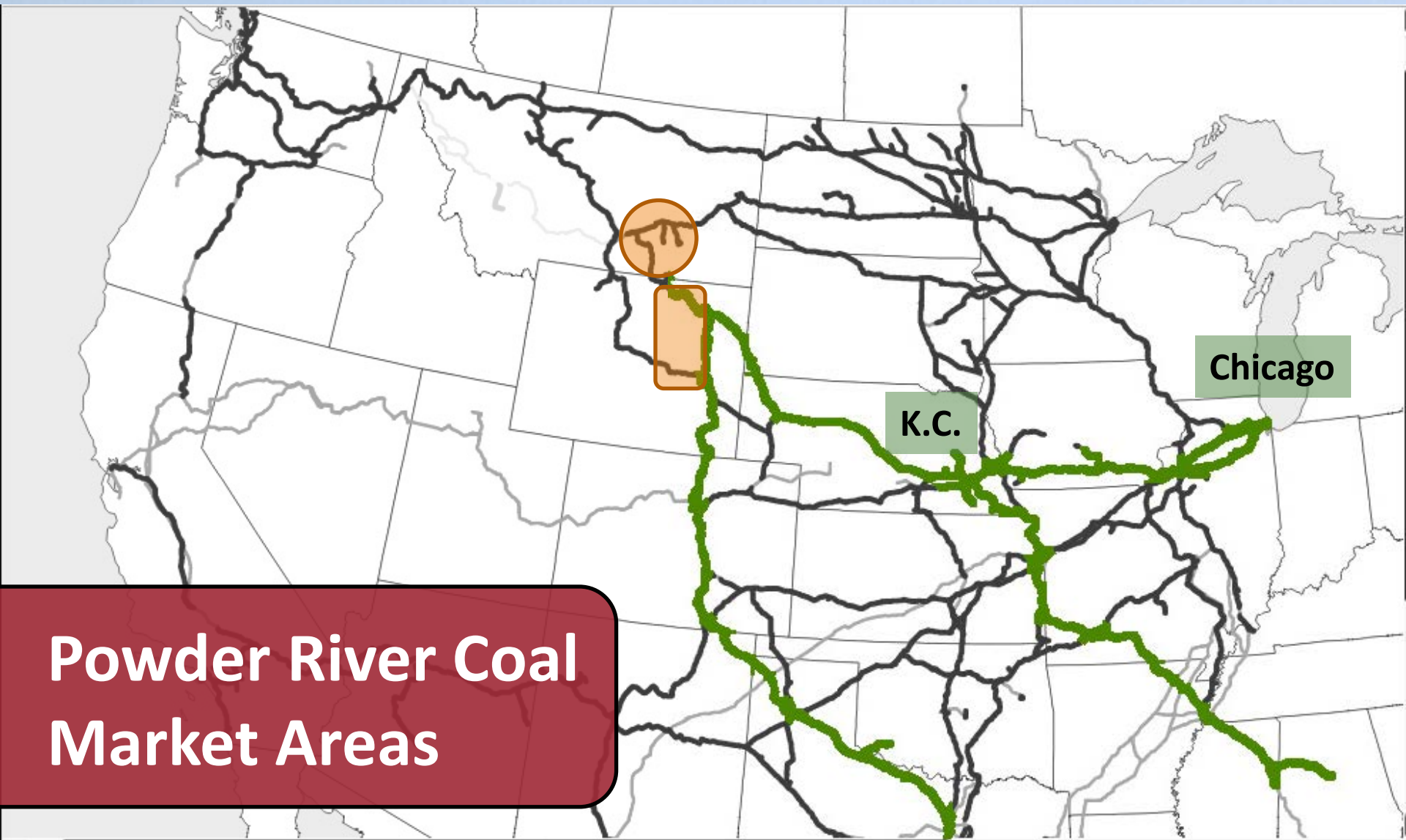
Powder River Coal Market Areas

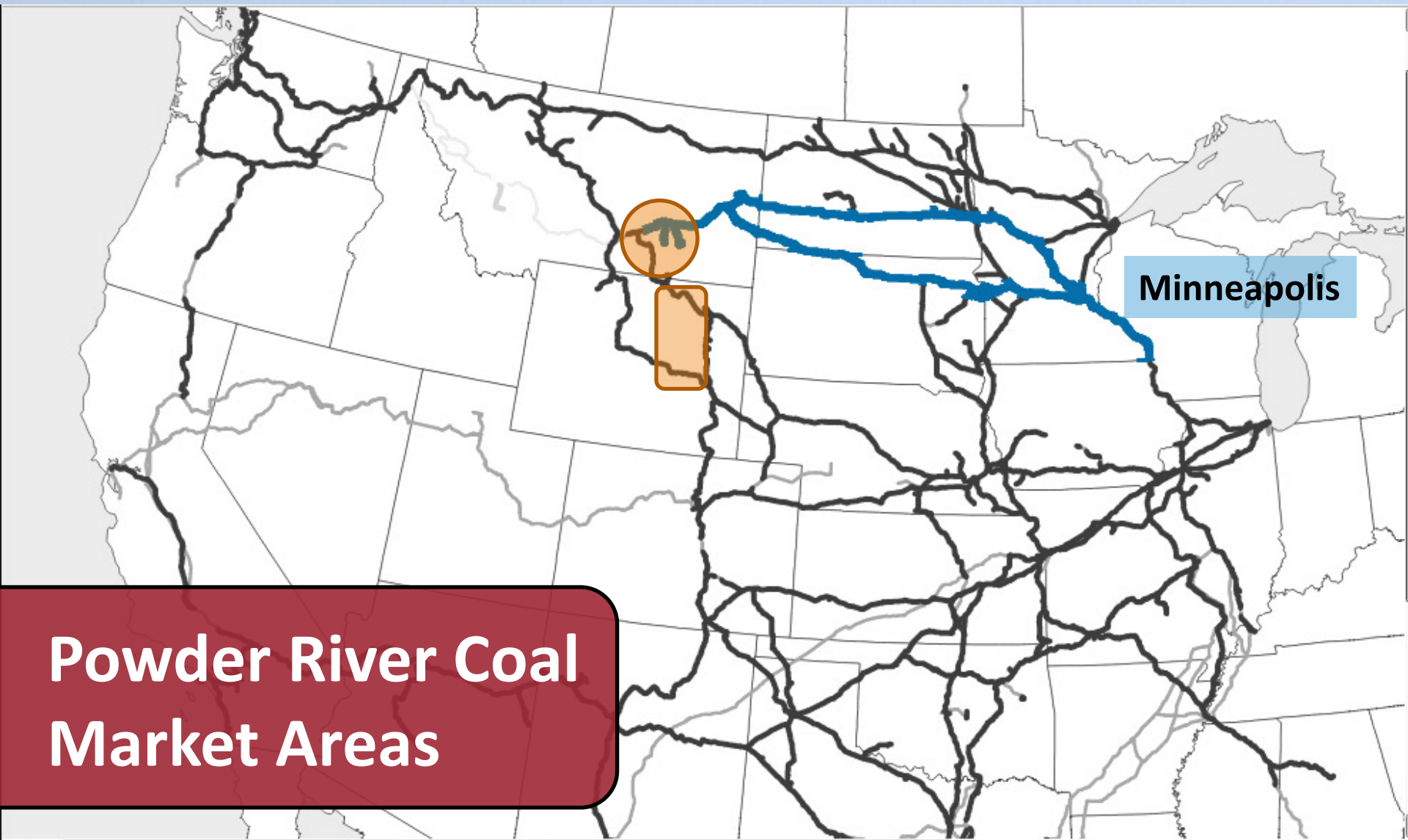


K.C.

Chicago

Houston

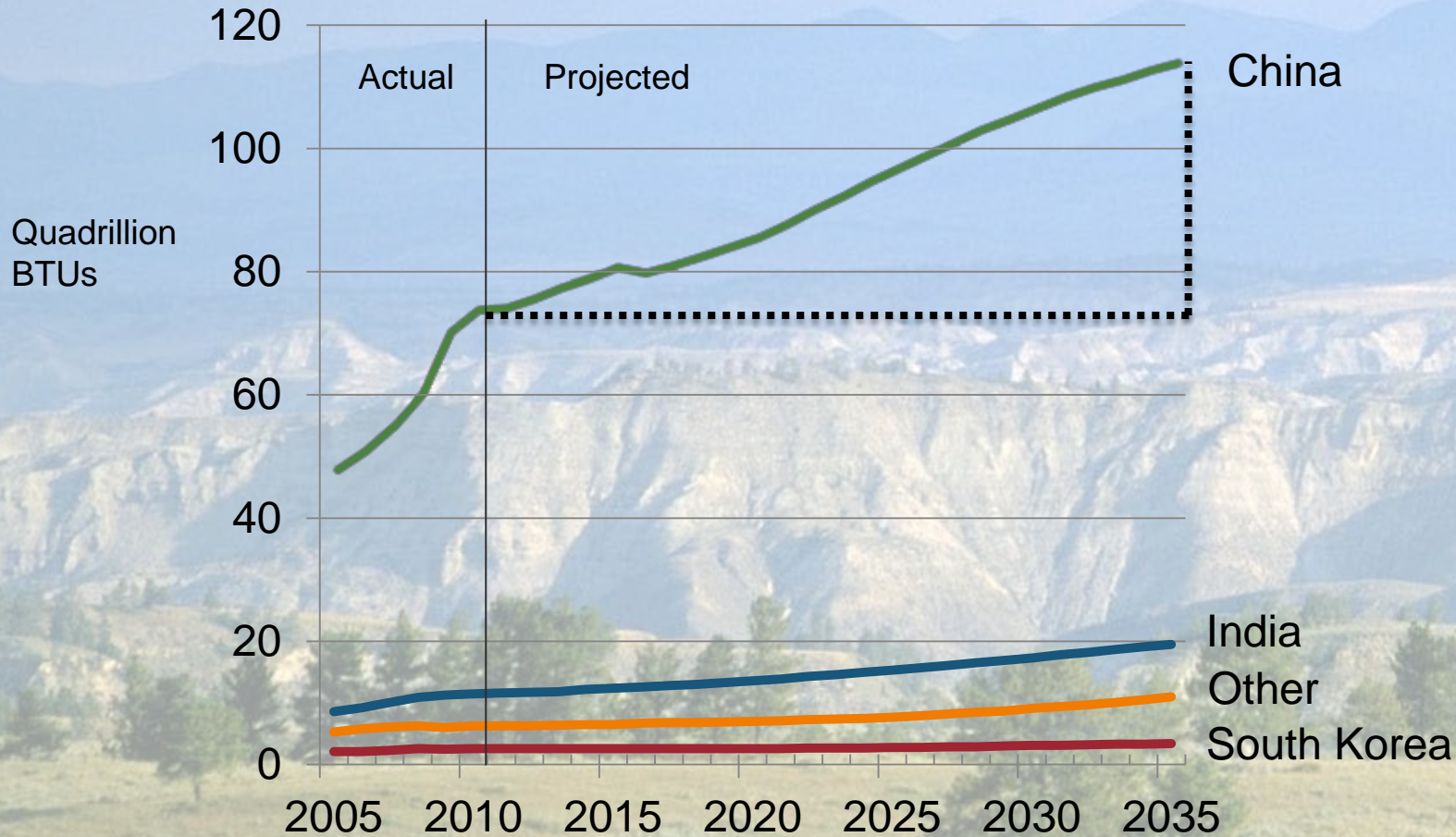




Minneapolis

**Powder River Coal
Market Areas**

Actual and Projected Asian Coal Consumption



Vancouver

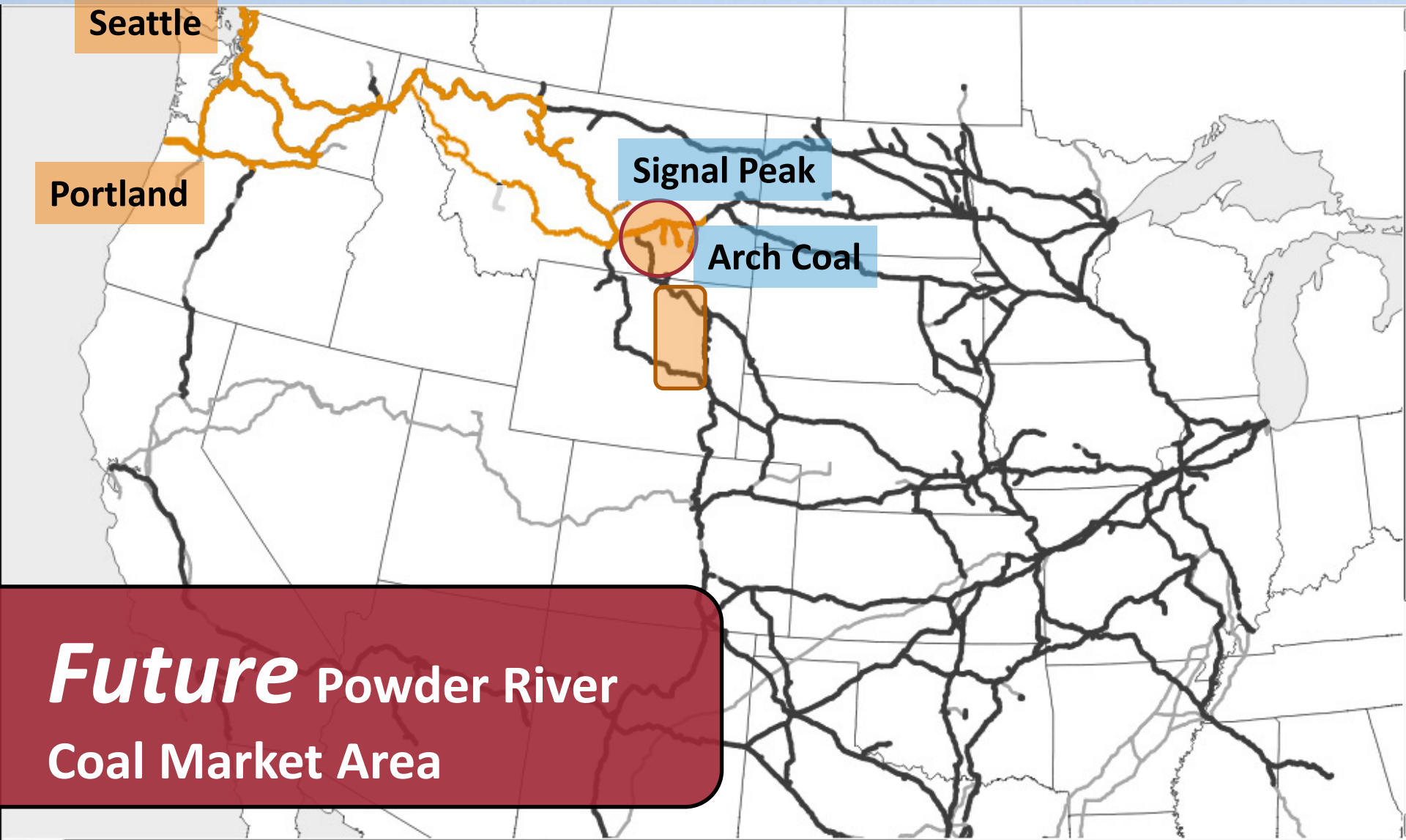
Seattle

Portland

Signal Peak

Arch Coal

Future Powder River
Coal Market Area

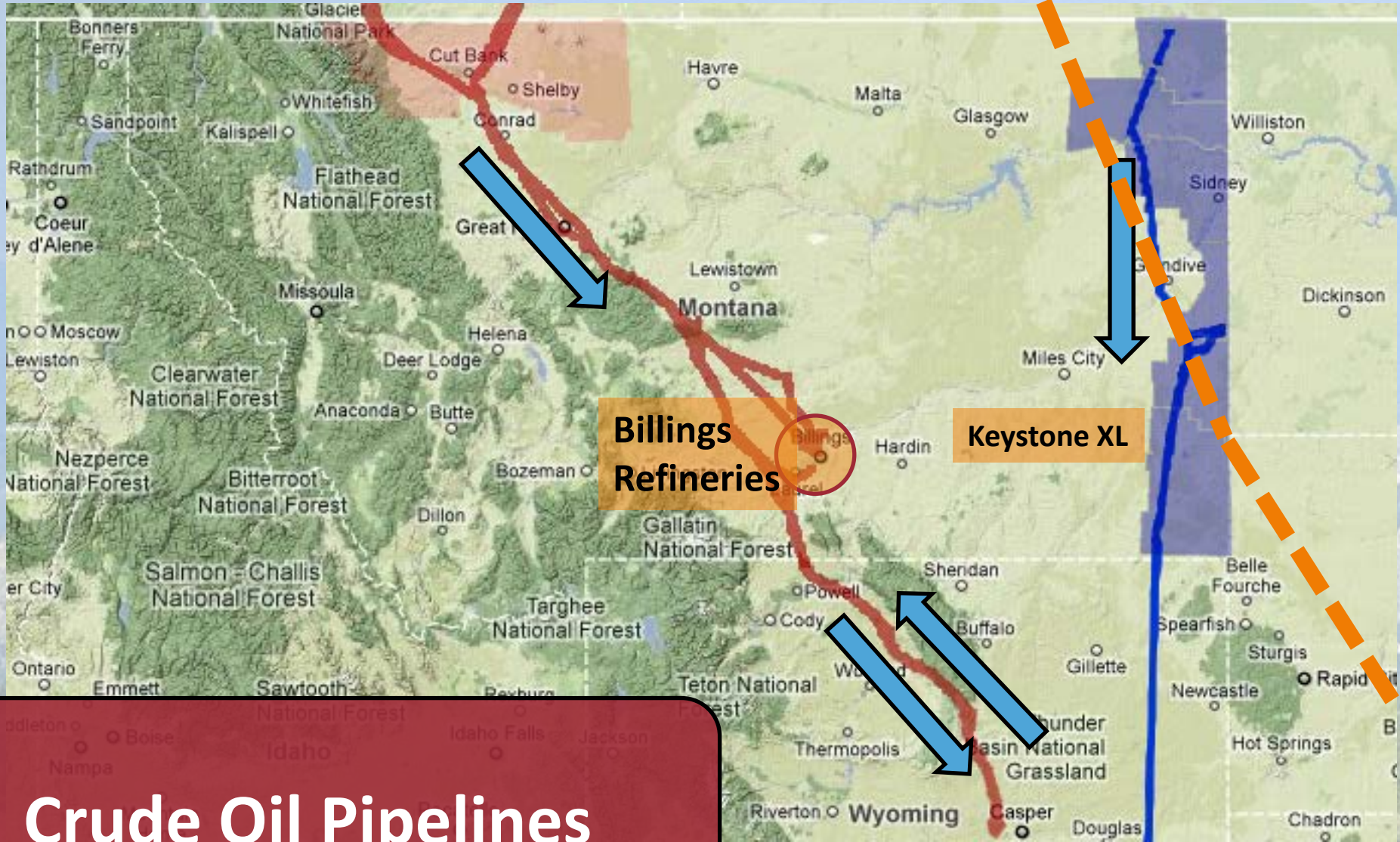


Montana Crude Oil, 2010

	Barrels

Source: Montana Oil and Gas Conservation Division.

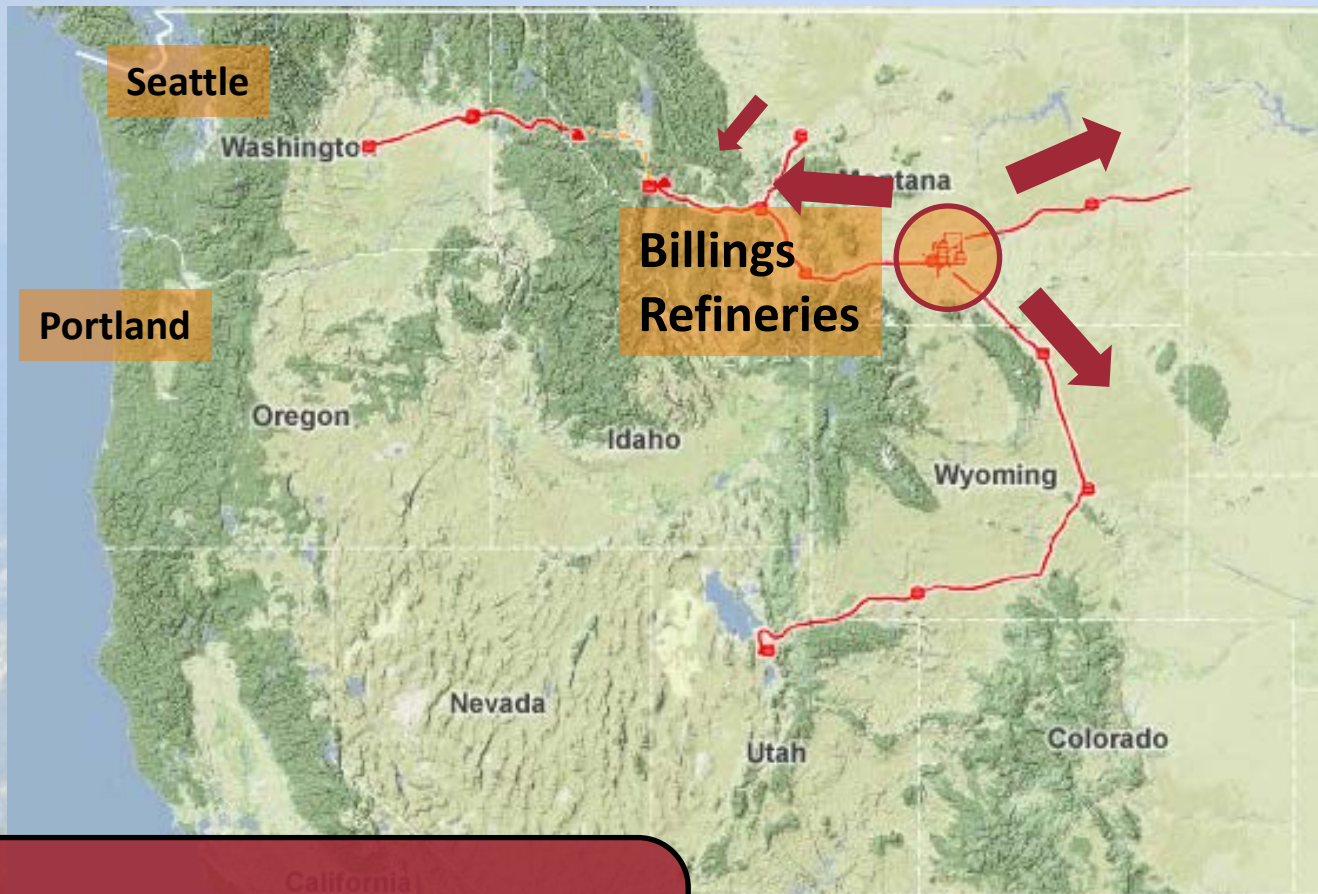
Edmonton



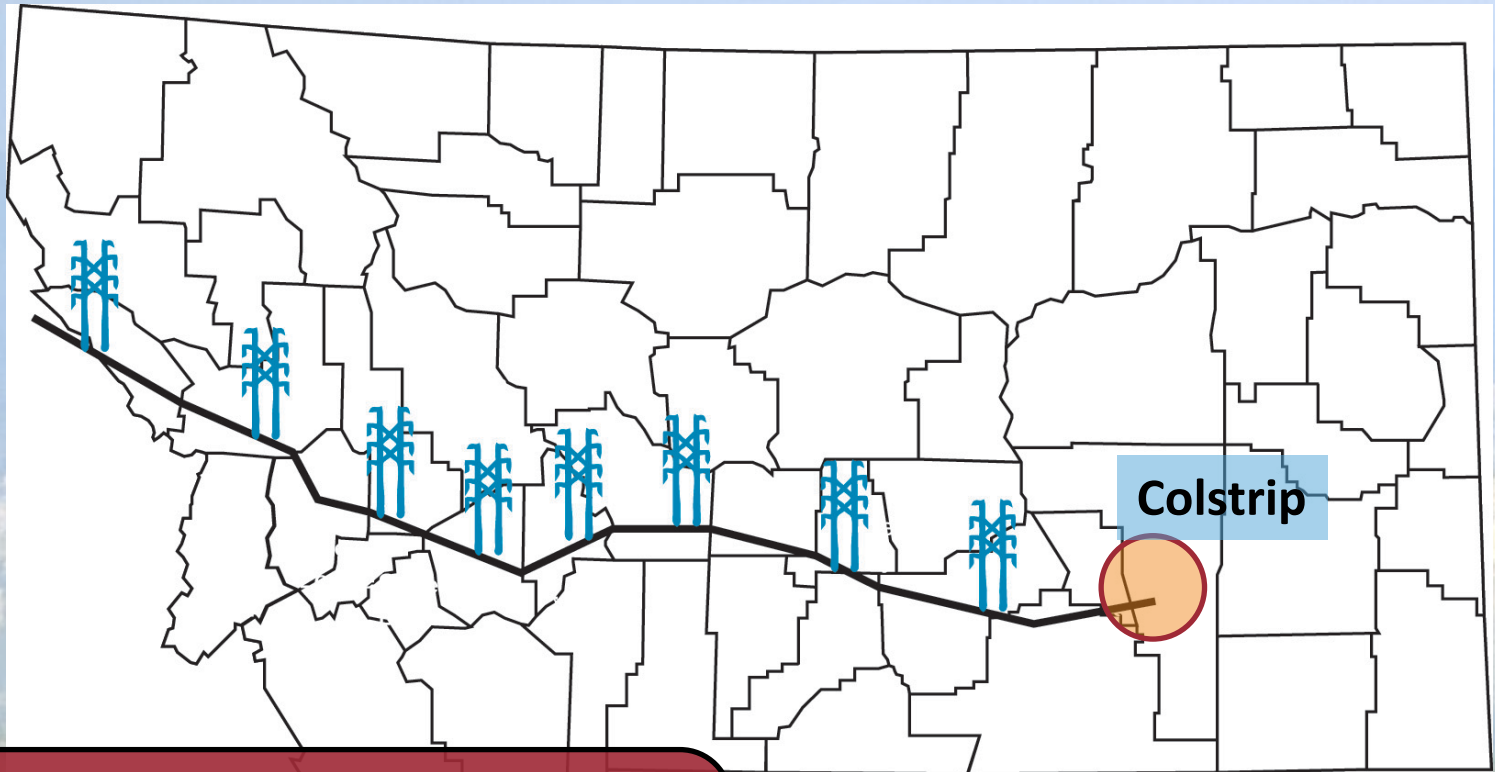
Billings
Refineries

Keystone XL

Crude Oil Pipelines



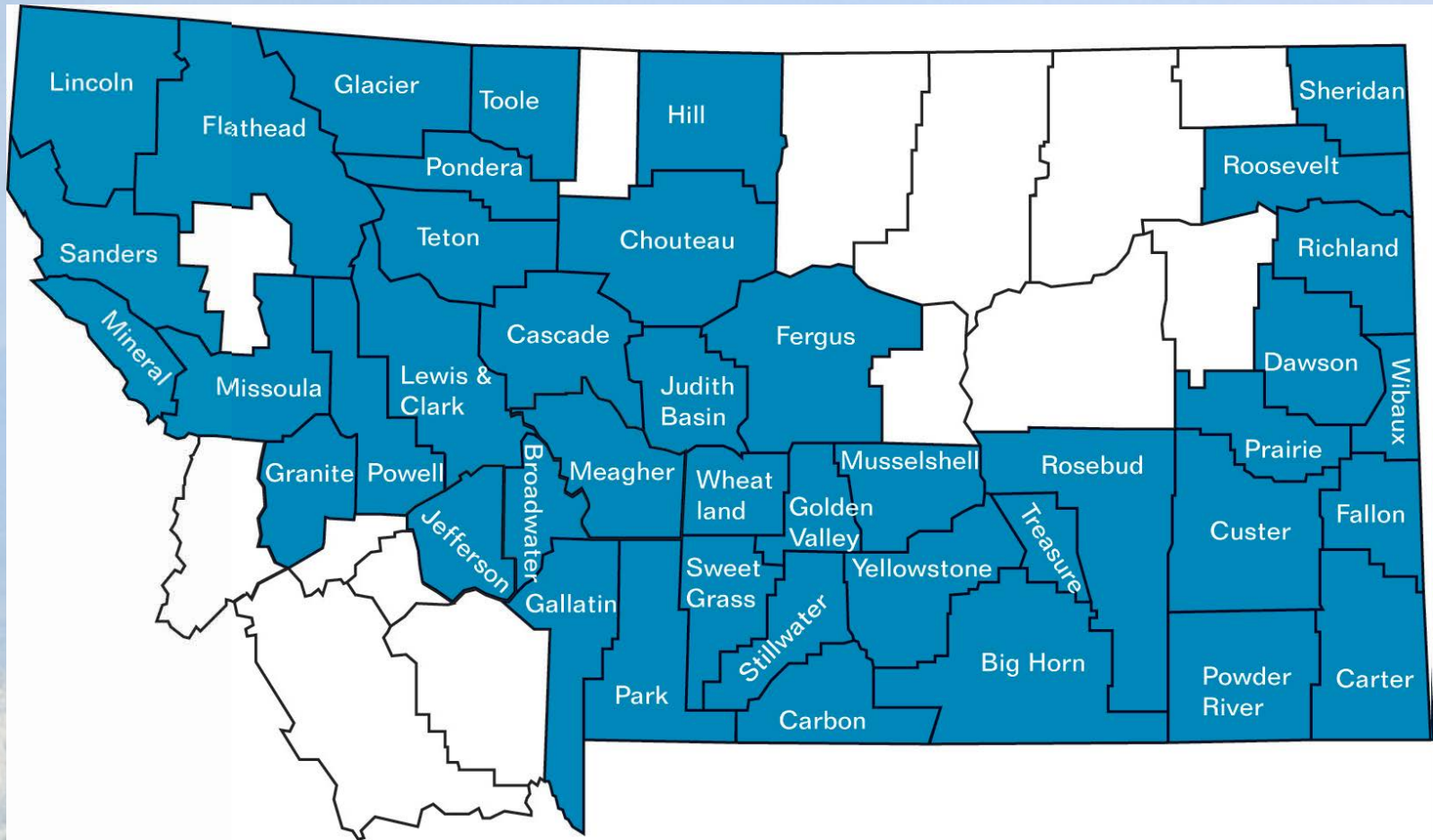
Petroleum Product Pipeline



**Colstrip 500 KV
Transmission Line**

Transmission Line Property Taxes to Counties

County	Estimated Taxes
Rosebud	\$492,000
Treasure	\$952,000
Big Horn	\$241,000
Yellowstone	\$1,467,000
Golden Valley	\$372,000
Stillwater	\$373,000
Wheatland	\$615,000
Meagher	\$865,000
Broadwater	\$563,000
Jefferson	\$401,000
Powell	\$322,000
Granite	\$401,000
Missoula	\$568,000
Mineral	\$784,000
TOTAL	\$8,417,000



Montana's Energy Transportation Systems



Questions?