

---

# OUTLOOK 2012 PRESENTATIONS

The University of Montana Bureau of Business and Economic Research

# Cascade County



## Inside:

National, State, and Local Forecasts • Agriculture • Energy  
Forest Products • Health Care • Housing  
Manufacturing • Travel and Recreation

Published with the support of the Montana Chamber of Commerce

---

# OUTLOOK 2012

Published with the support of the Montana Chamber of Commerce

## Advisory Board



**Elizabeth Ching**  
Office of Sen. Max Baucus

**Barbara Stiffarm**  
Opportunity Link, Inc.

**John Goodnow**  
Benefis Health System

**Timothy Waldo**  
First Security Bank

**Heather McDowell**  
PPL Montana

**Larry White**  
The University of Montana

**Chuck Roady**  
F.H. Stoltze Land and  
Lumber Co.

## Outlook 2012



**Larry Gianchetta**  
Dean, School of Business  
Administration

**Patrick M. Barkey**  
Director, Bureau of Business  
and Economic Research

**Christina Henderson**  
Marketing Director  
Seminar Coordinator

**Shannon Furniss**  
Communications Director

**Jayne Fraser & Nate Hegyi**  
Publications Assistants

**BUREAU OF  
BUSINESS  
AND ECONOMIC  
RESEARCH**

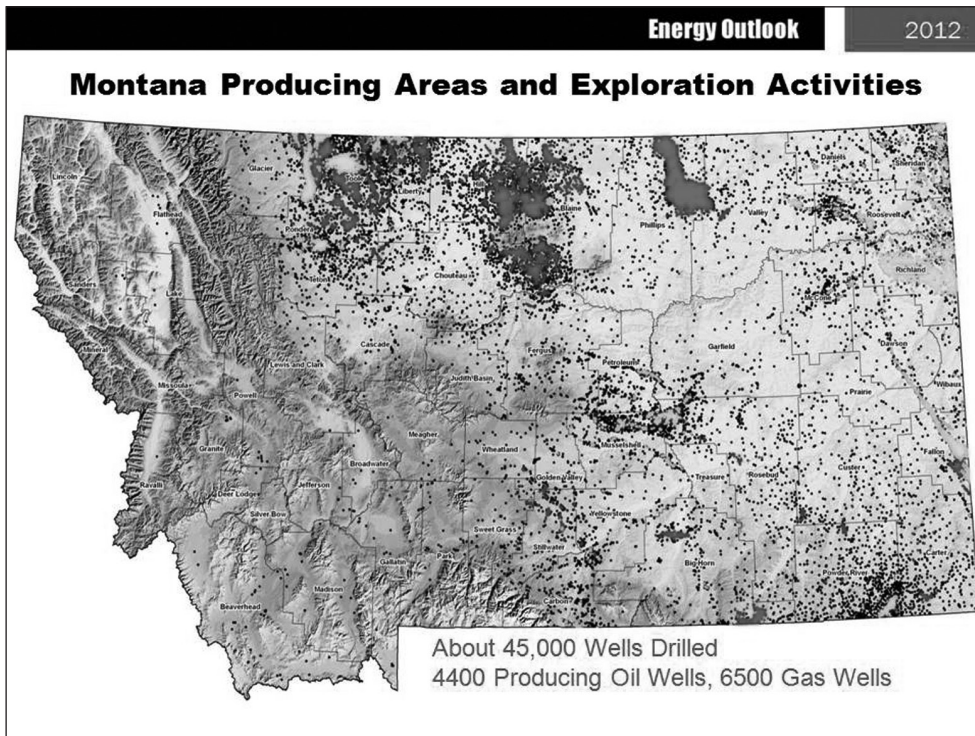
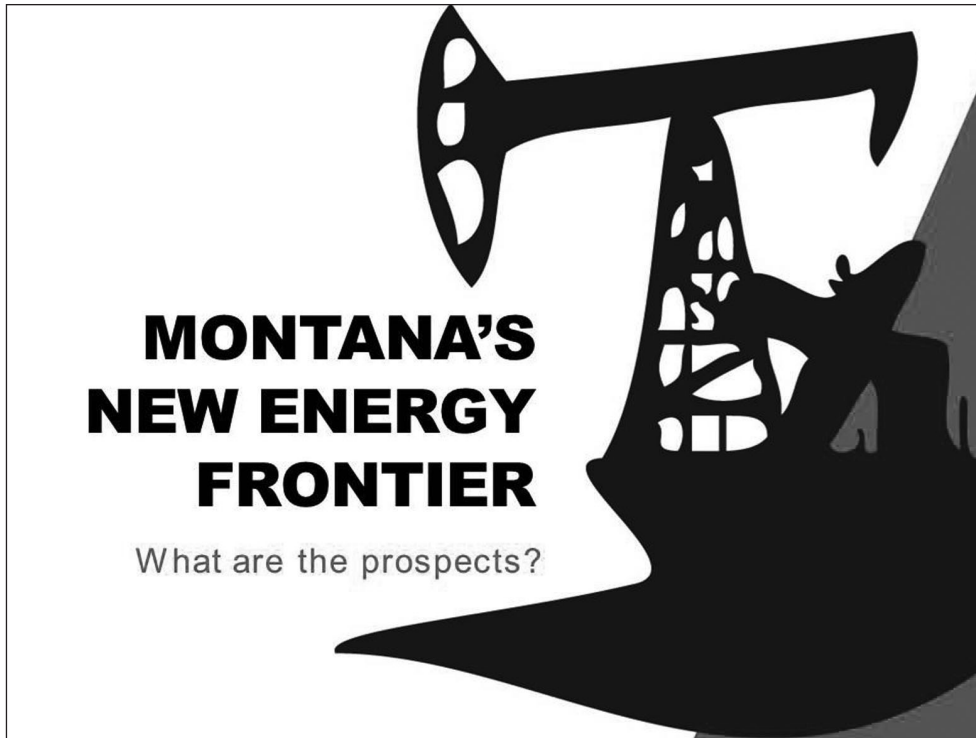
School of  
**BUSINESS**   
**ADMINISTRATION**  
The University of Montana

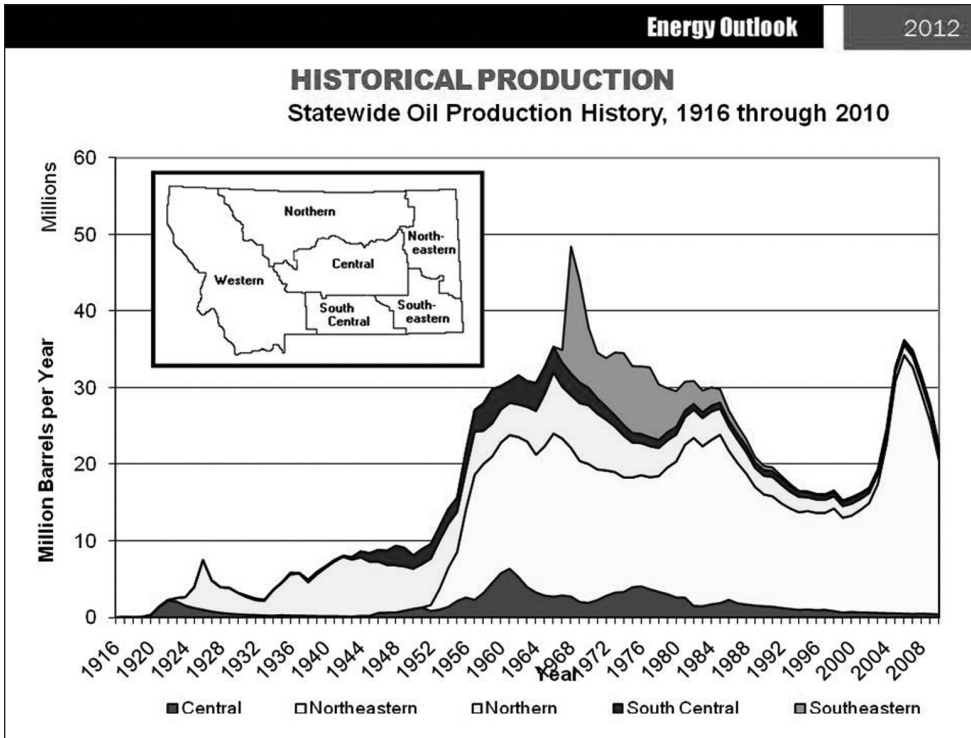
# Table of Contents

---

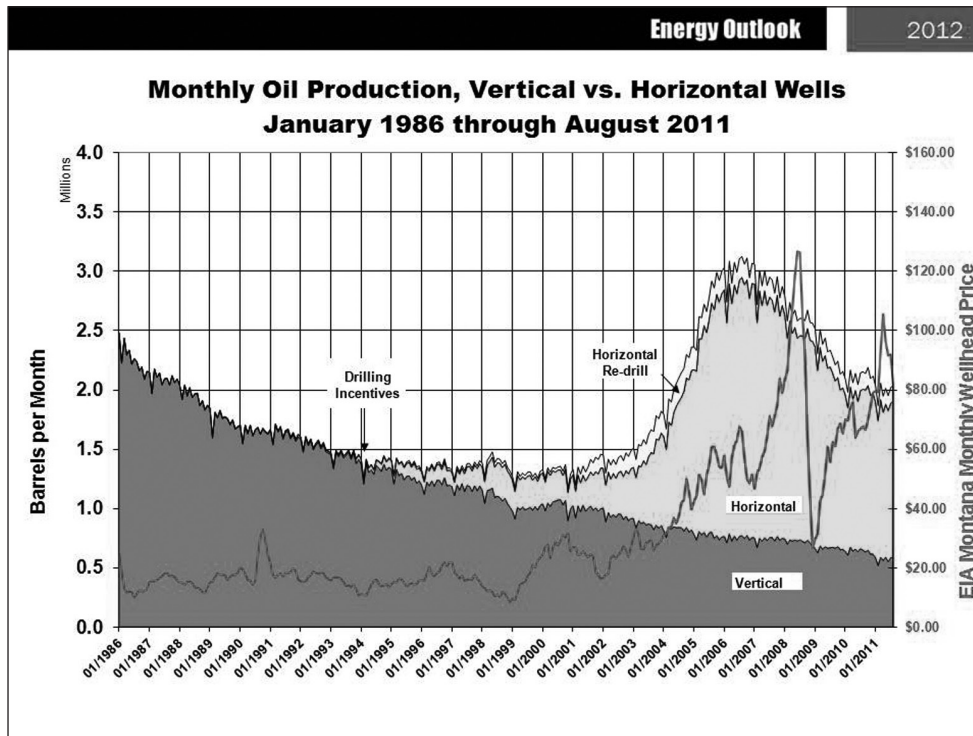
## 2012 Economic Outlook

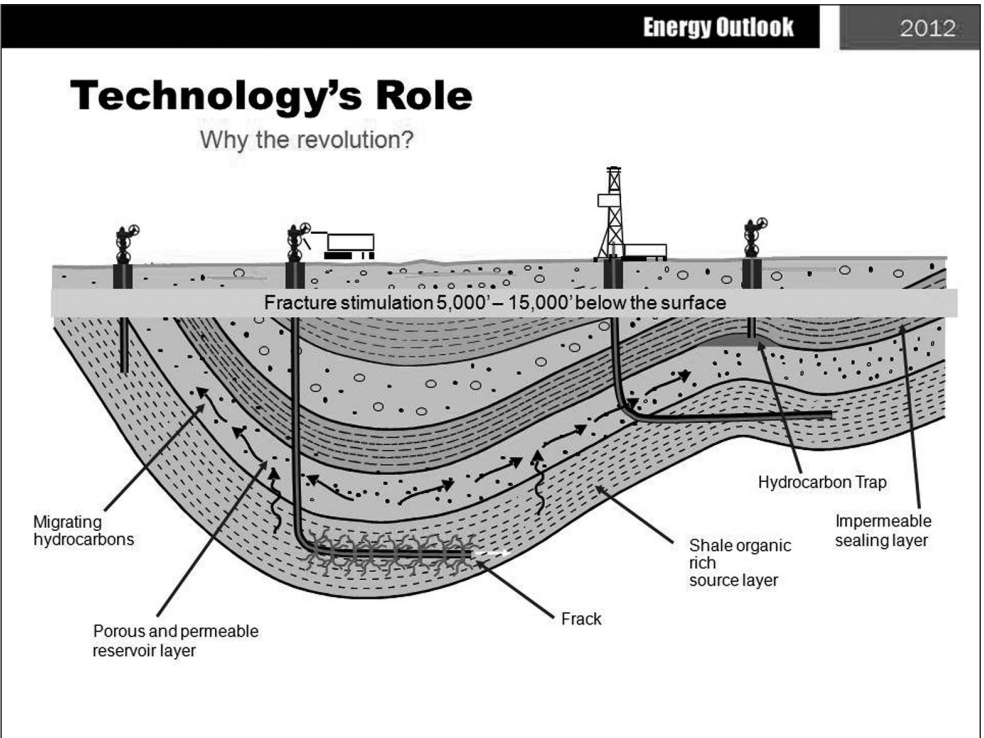
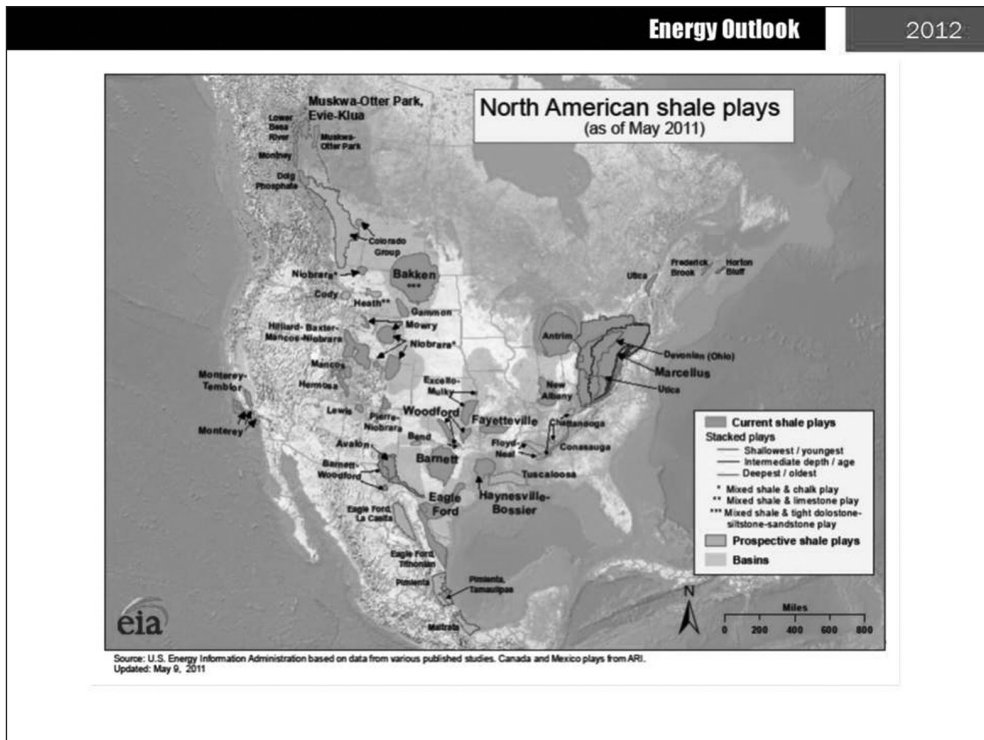
<b>Energy Outlook</b> <i>by Tom Richmond</i>	<b>2</b>
<b>National and State Outlooks</b> <i>by Patrick M. Barkey</i>	<b>14</b>
<b>Local Economic Outlook</b> <i>by Paul E. Polzin</i>	<b>26</b>
<b>Travel and Recreation Outlook</b> <i>by Norma P. Nickerson</i>	<b>36</b>
<b>Health Care Outlook</b> <i>by Gregg Davis</i>	<b>43</b>
<b>Agricultural Outlook</b> <i>by George Haynes</i>	<b>53</b>
<b>Housing Outlook</b> <i>by Scott Rickard</i>	<b>69</b>
<b>Manufacturing Outlook</b> <i>by Todd A. Morgan</i>	<b>82</b>
<b>Forest Products Outlook</b> <i>by Todd A. Morgan</i>	<b>88</b>



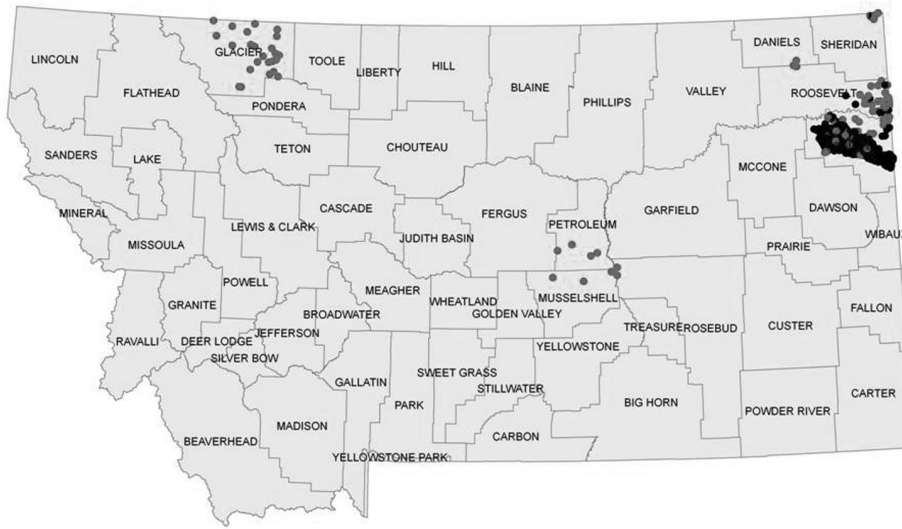


Notes

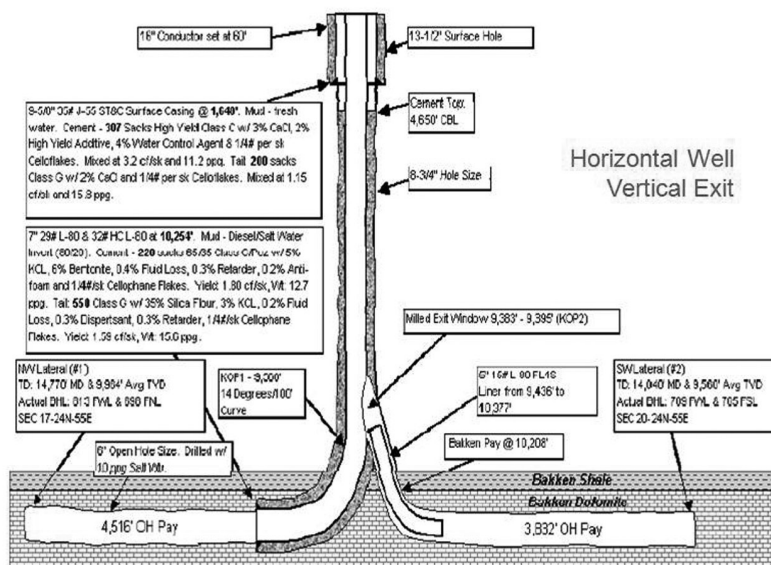


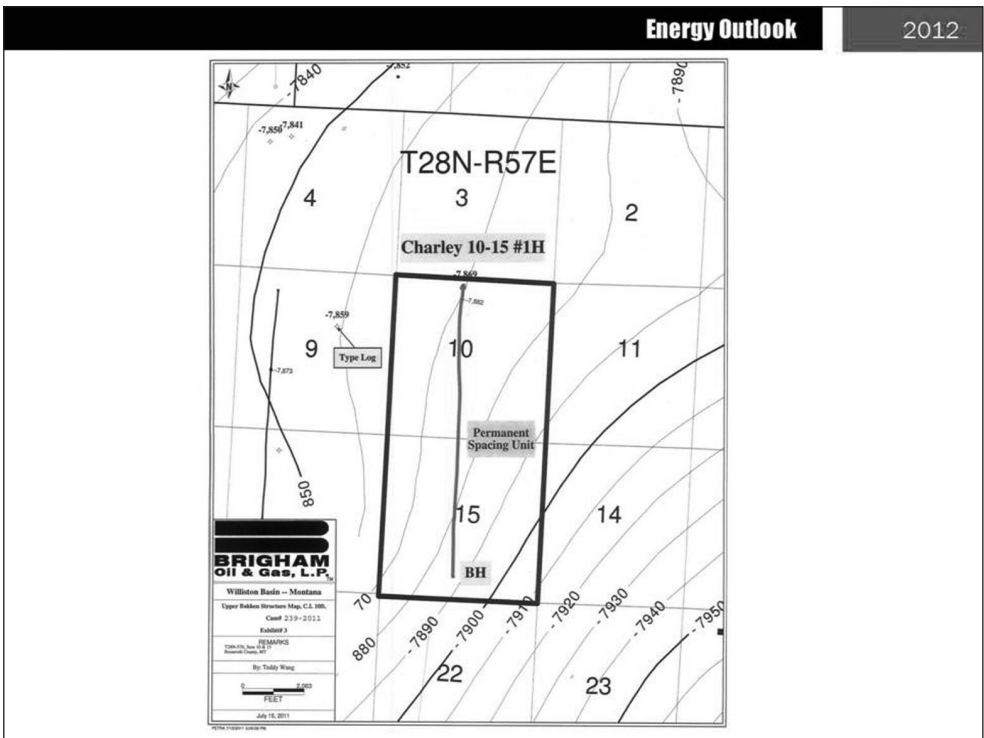
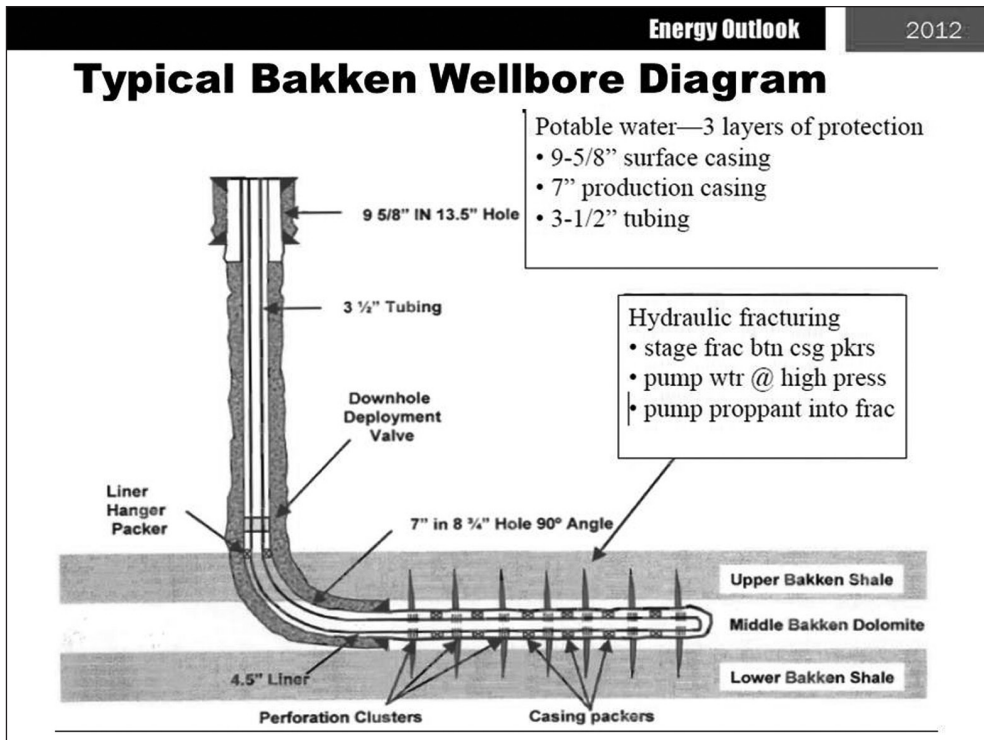


### Horizontal Oil Shale Activity

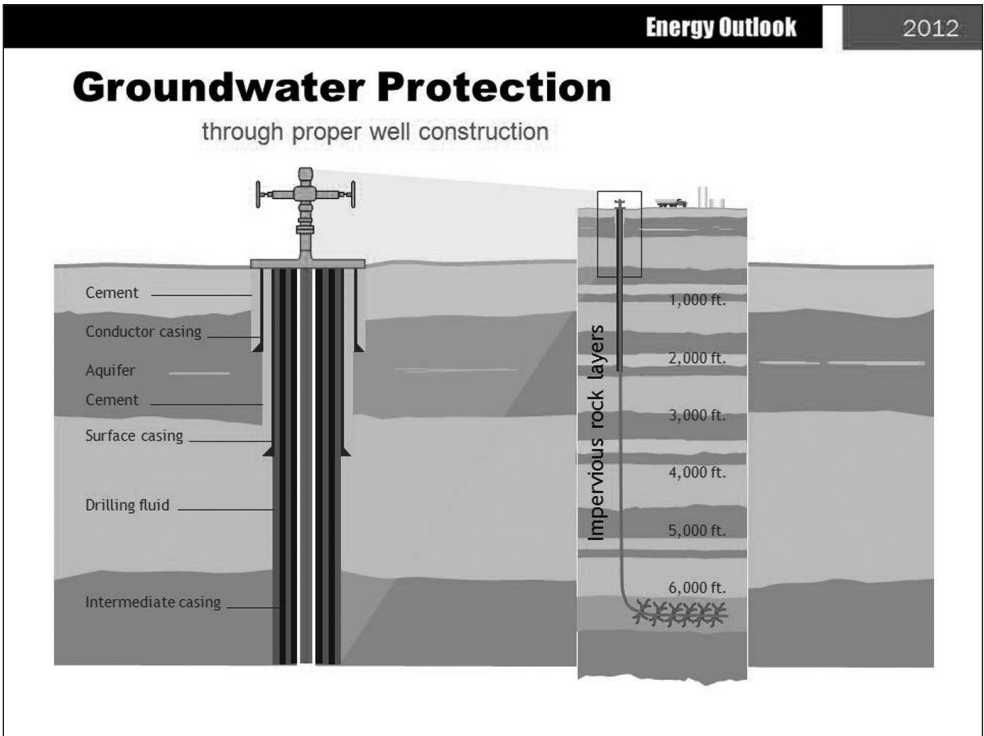
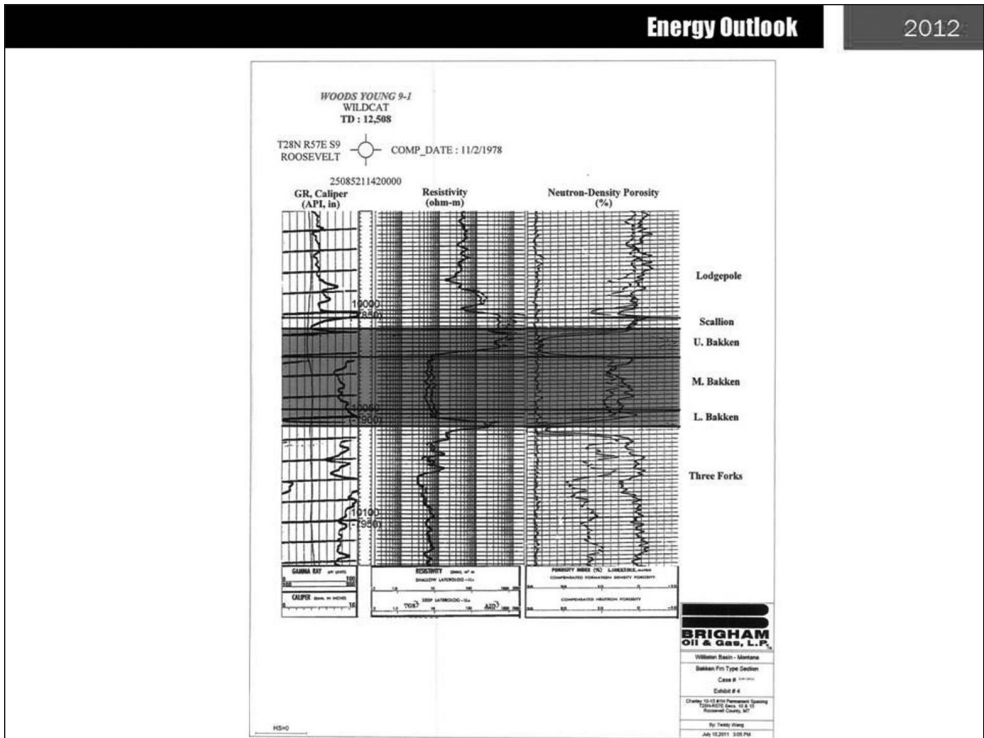


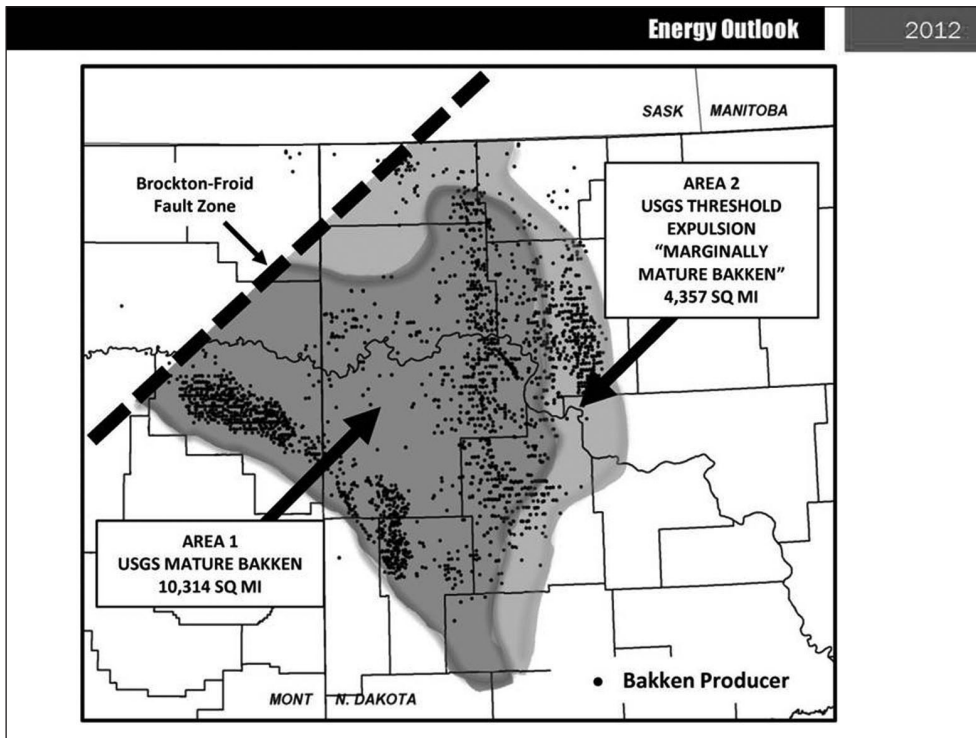
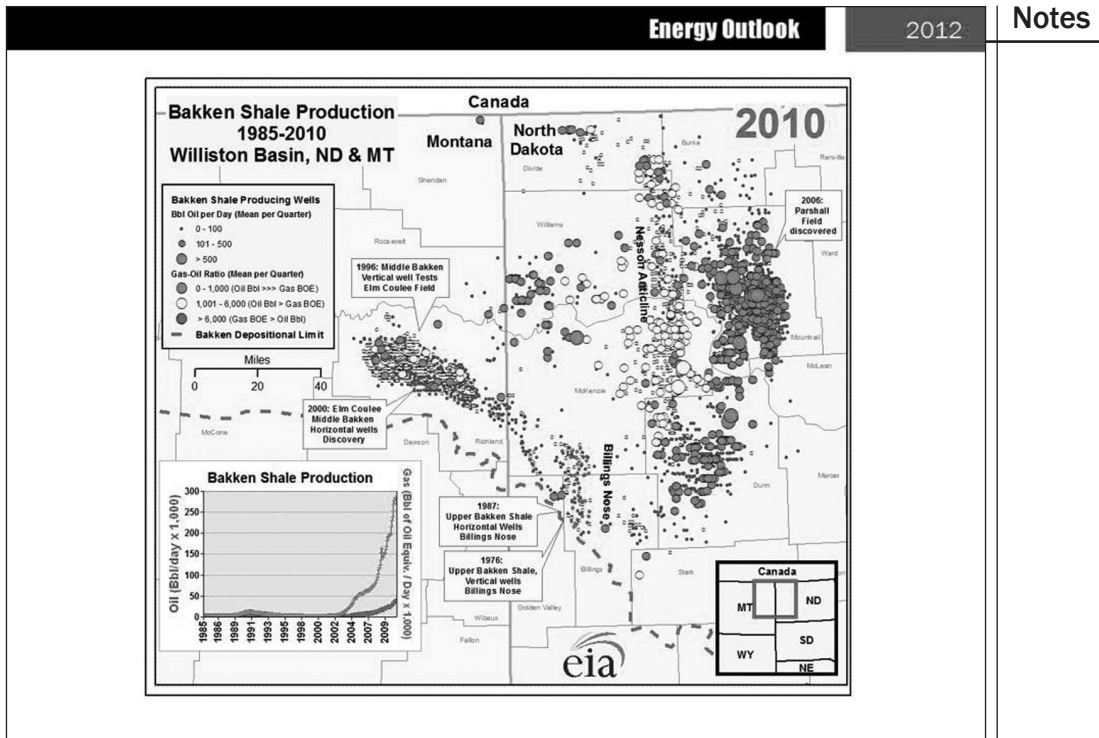
### Vertical Casing Exit

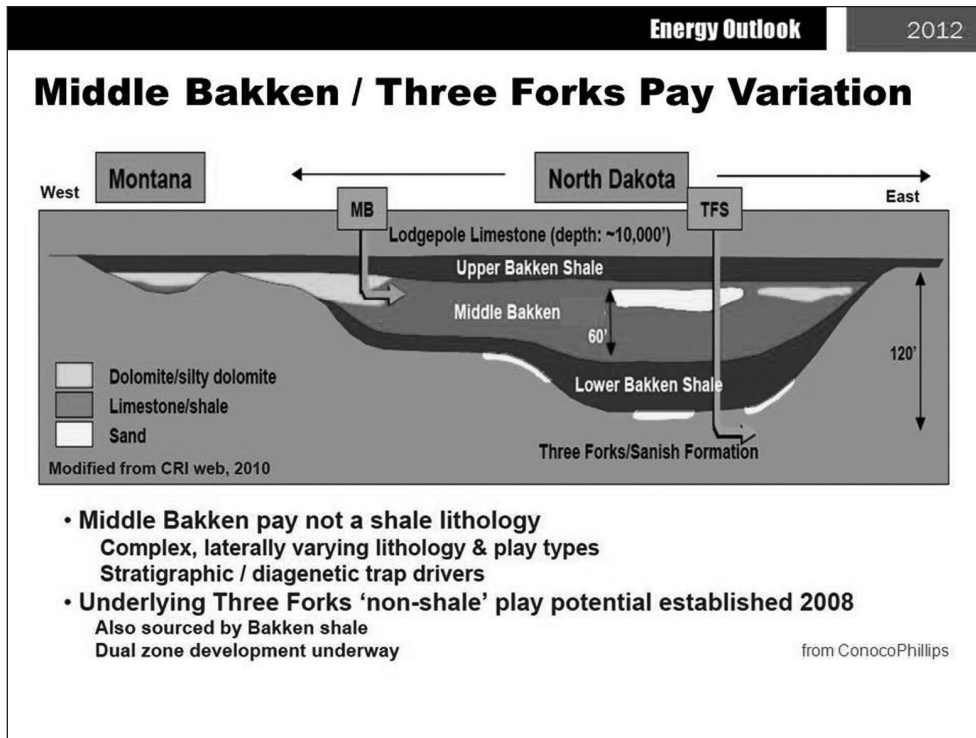




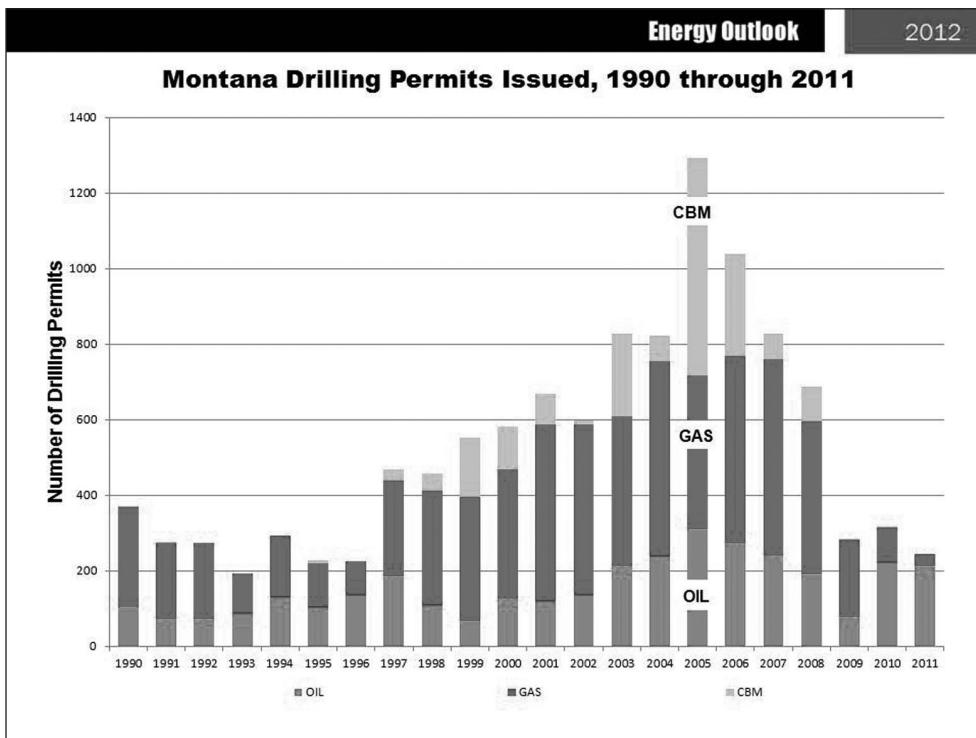


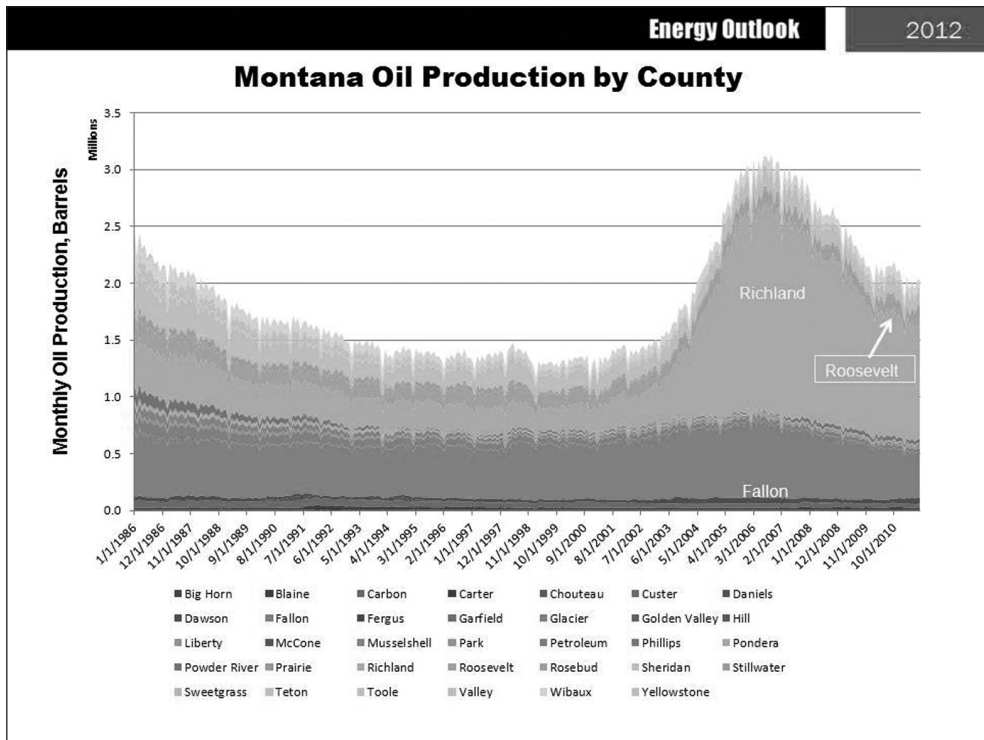




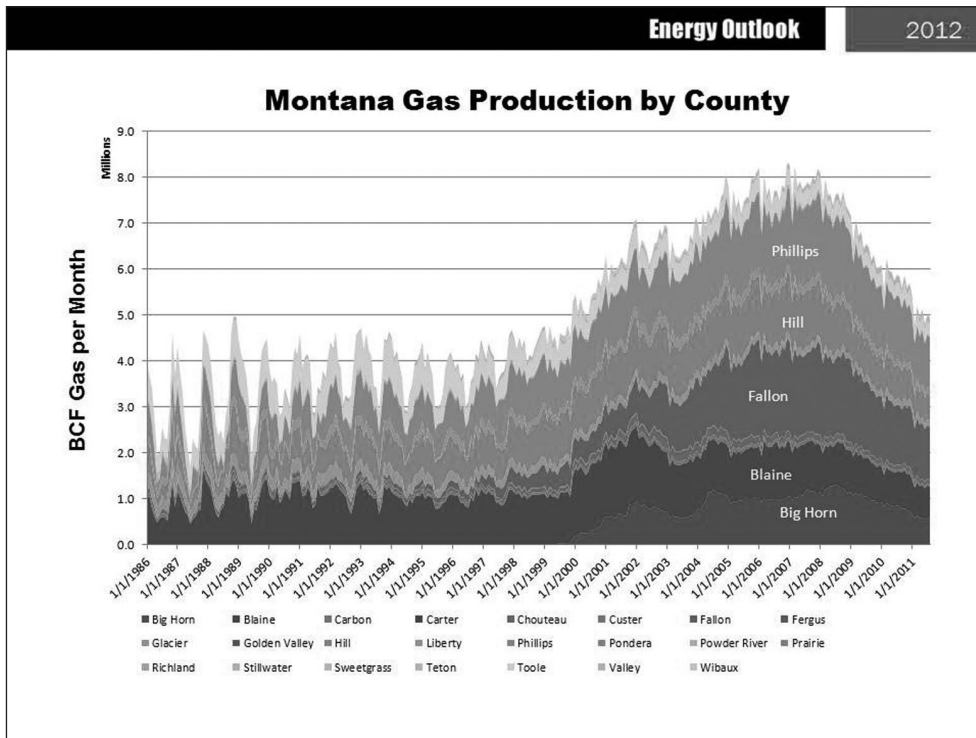


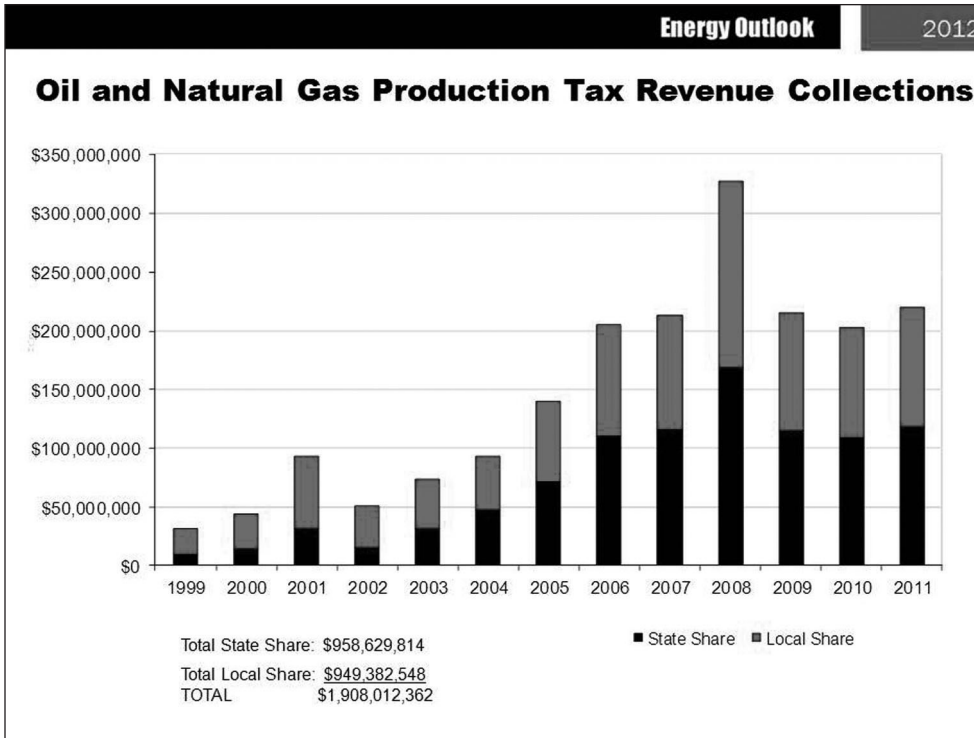
Notes



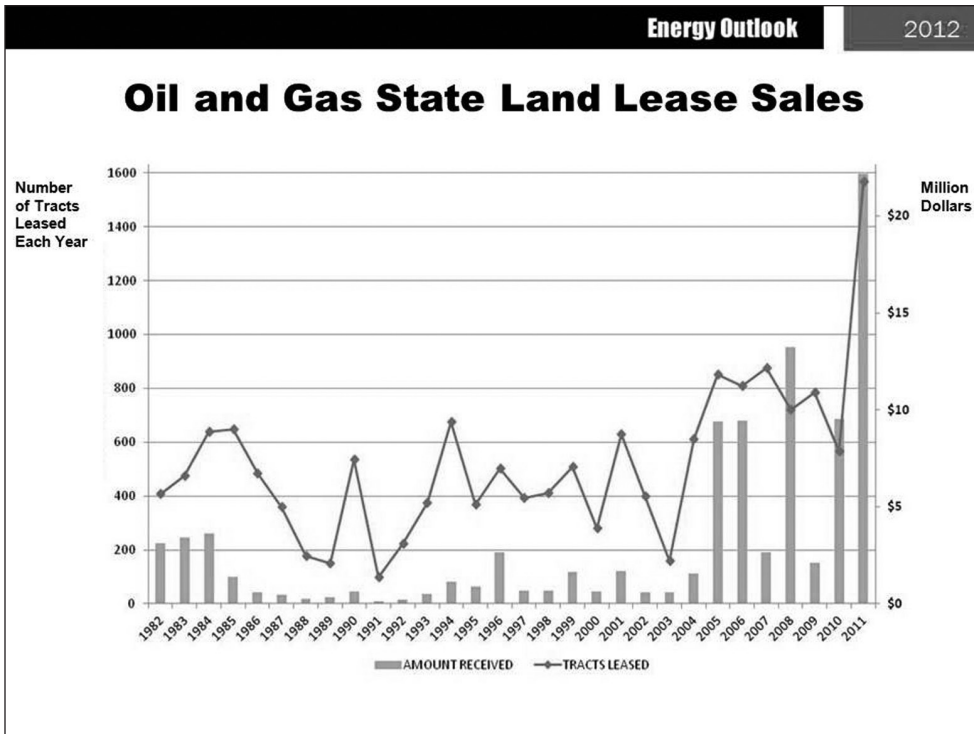


Notes





Notes



## Petroleum Industry Facts

**\$9+ BILLION** Total economic impact – including E&P and Refining

**4,600** Employees in Exploration, Production, or Refining

Economic impact from producing an additional 1 million barrels of oil

- **86** Full time positions
- **\$18.5 million** in labor income

Each 10% increase in drilling activity leads to about 315 additional jobs.

Drilling Rig Count Increased from 9 last year to 13 in January 2012

Industry likes MT's business climate and tax structure

- **Brigham Energy:** "They (Montana) have a good operating environment."  
(Billings Gazette, May, 2011)

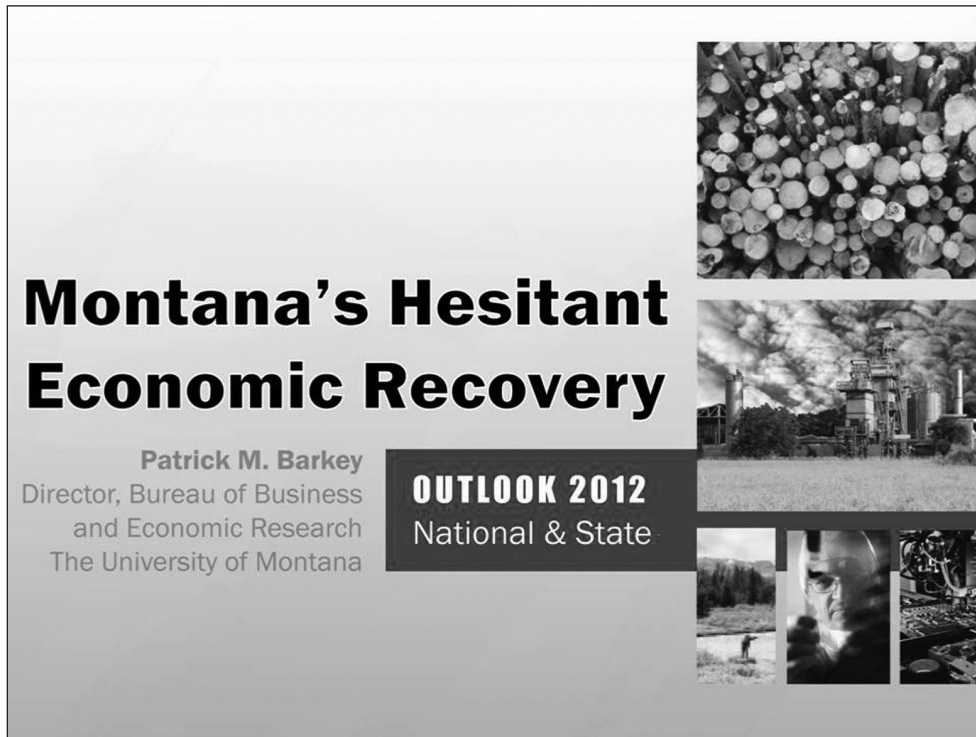
## BUSINESS TAX CLIMATE RANKINGS

*THE TAX FOUNDATION FISCAL YEAR 2011*



Energy Outlook		2012		Notes
<b>Montana Oil and Gas Taxes</b>				
<b>Montana's tax rate on oil is 20% lower than North Dakota's</b>				
→ 9.25% vs. 11.5% (Former North Dakota Governor Ed Schafer, FixTheTax.com)				
Taxes	Montana	North Dakota	Advantage	
Tax Rate	9.25%	11.5%	Montana	
Tax Holiday	18 mo. (0.5%)	Only if oil <\$50.07	Montana	
Avg. Tax/Bbl (05-08)	\$4.89	\$5.87	Montana	
(Montana Department of Revenue Study)				

Energy Outlook		2012	
<b>O&amp;G Impact Funds to Counties, 2007-2001</b>			
All O&G Producing Counties (33)	\$555 million		
Top 12 Counties Big Horn, Blaine, Fallon, Glacier, Hill, Phillips, Powder River, Richland, Roosevelt, Sheridan, Toole, Wibaux	\$515 million		
Richland County	\$244 million Over \$26,000/resident		



# Montana's Hesitant Economic Recovery

**Patrick M. Barkey**  
Director, Bureau of Business and Economic Research  
The University of Montana

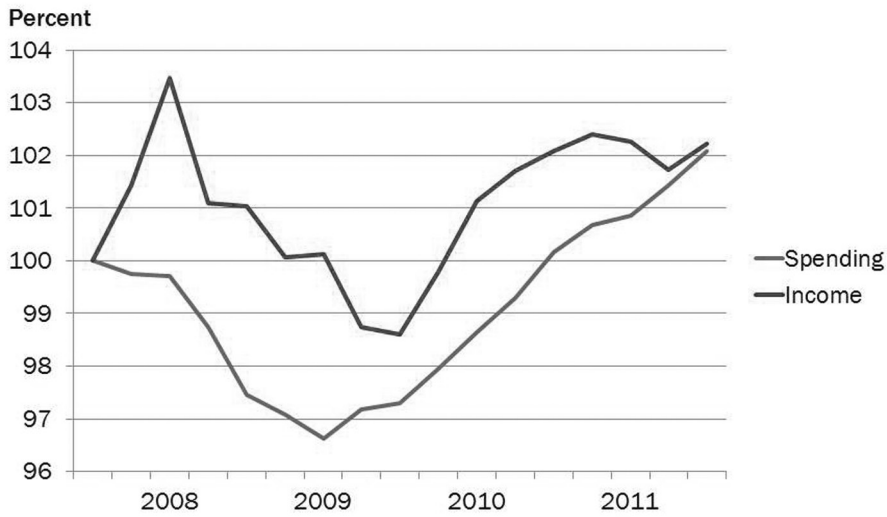
**OUTLOOK 2012**  
National & State

## A Great Recession, But Not a Great Recovery

- Persistently weak consumer and business spending
- Slow recovery both here and abroad
- Special problems of housing and the Euro
- Problems of long-term unemployed, government debt, are festering as a result

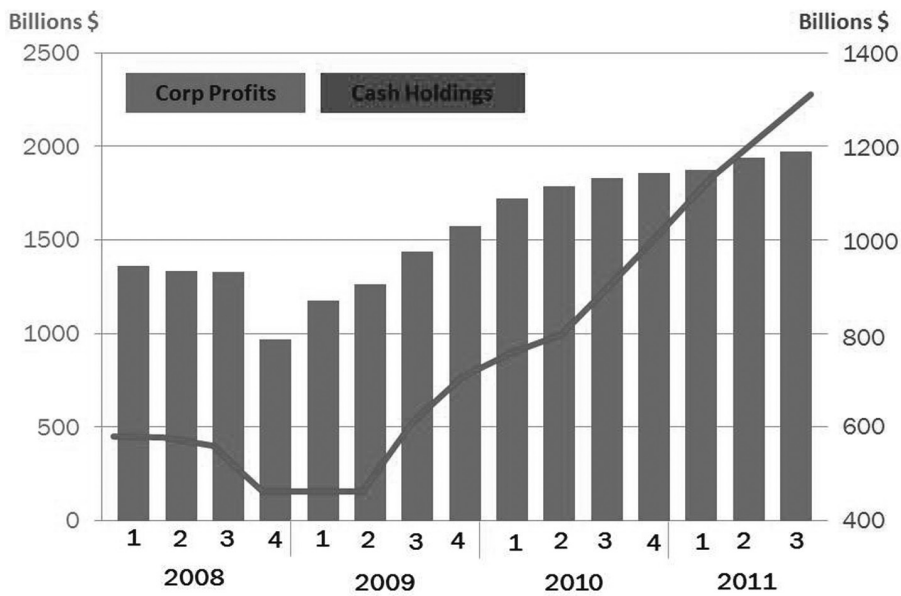


**Pace of Consumer Spending Likely to Slow**

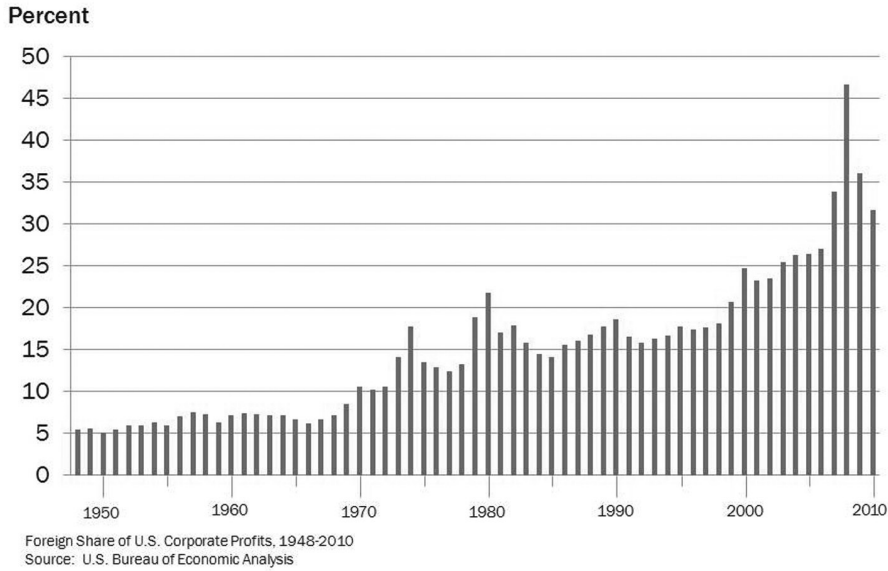


U.S. Pers. Consumption Expenditures and Disposable Pers. Income, 2005 \$, Index 2007Q4 = 100

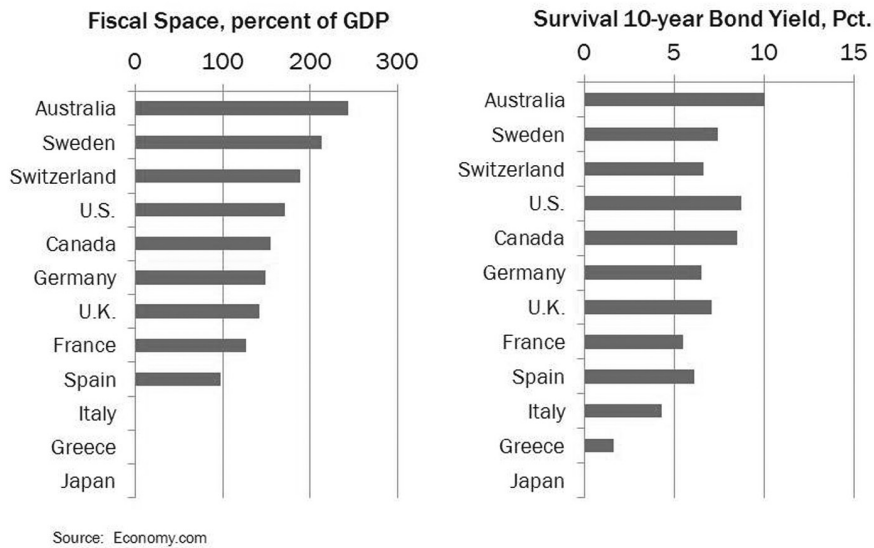
**Companies Are Hoarding, Not Spending**



**Source of Corporate Profits?  
Look Abroad**



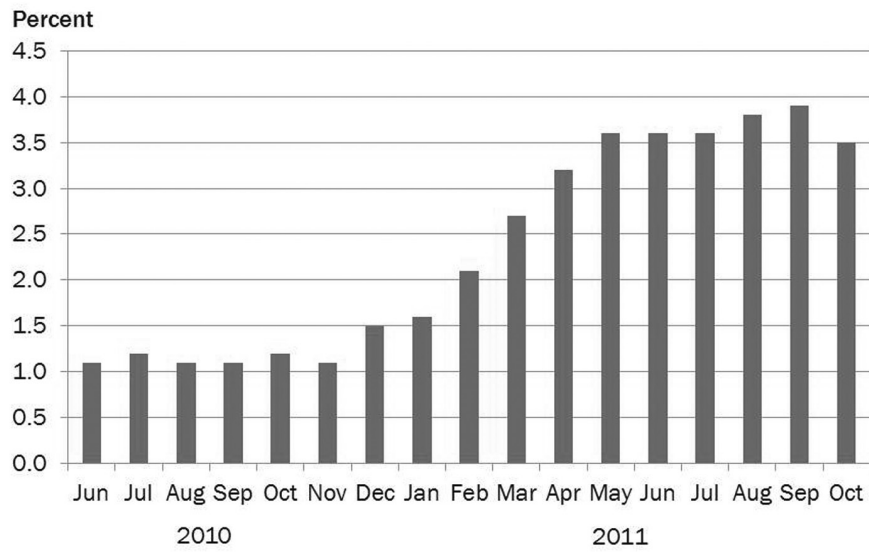
**How Much Borrowing Capacity  
Do Countries Have Left?**



**2011 Growth in Montana  
will be Lower Than 2010**

- Reason #1: Inflation

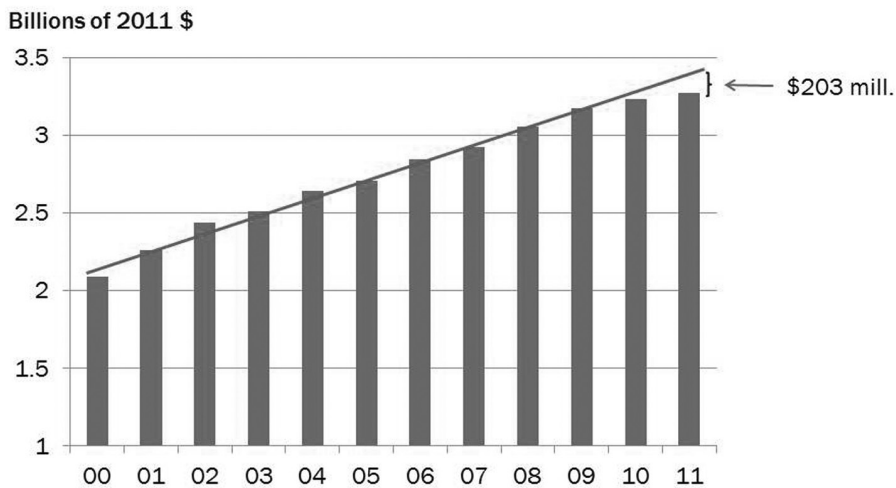
**Consumer Price Index  
12-month percent change**



**2011 Growth in Montana  
will be Lower Than 2010**

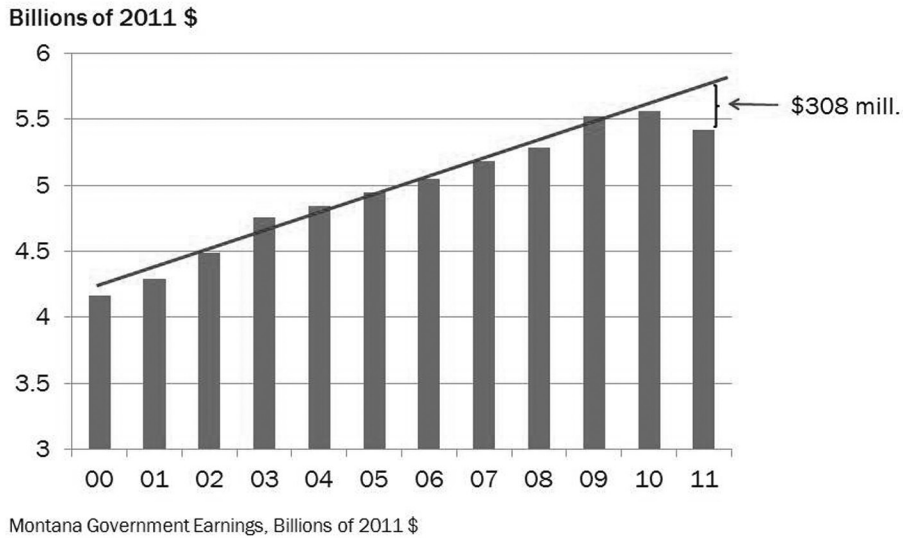
- Reason #1: Inflation
- Reason #2: Underperformance of key sectors

**Health Care  
Earnings Growth Slows**



Montana Health Care Services Earnings

**Government Earnings  
Go in Reverse**

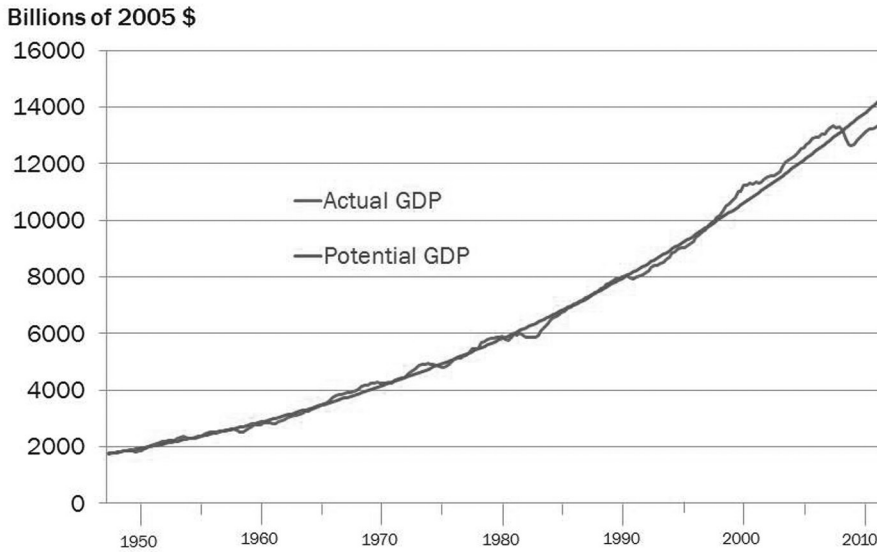


Notes

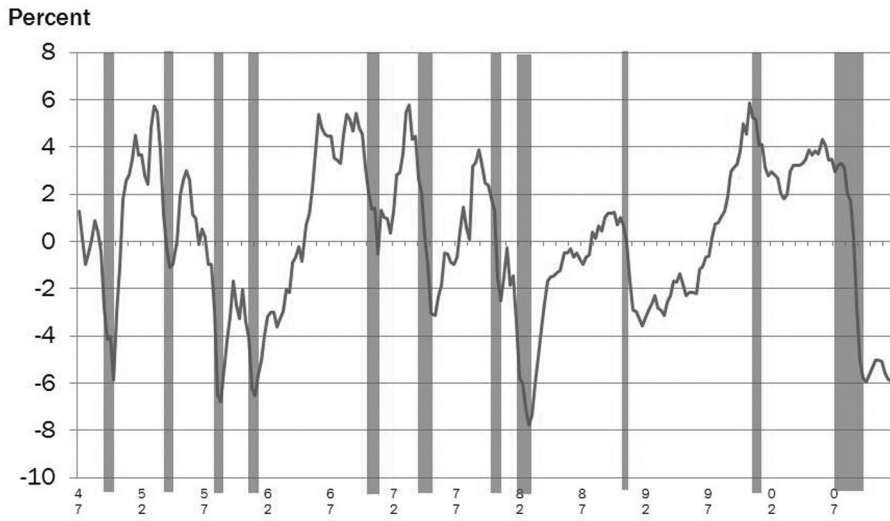
**2011 Growth in Montana  
will be Lower Than 2010**

- Reason #1: Inflation
- Reason #2: Underperformance of key sectors
- Reason #3: The national economy

**Actual and Potential Economic Output**



**How the U.S. Economy Recovers from Recessions**



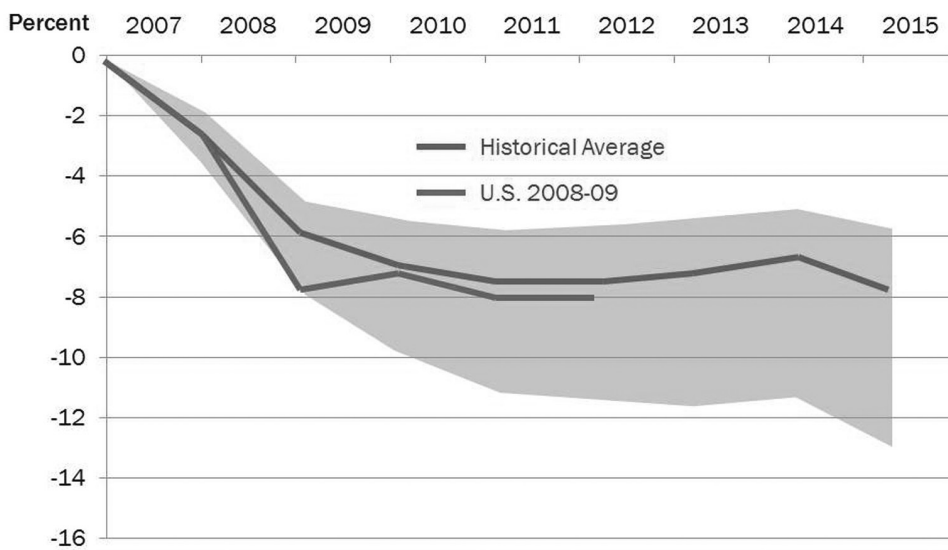
Deviation of U.S. Gross Domestic Product from Long Term Trend

**Recessions and Banking Crises**

- Austria, 2008
- Hungary, 2008
- U.S., 1929
- Sweden, 1991
- Japan, 1992
- Norway, 1987
- Indonesia 1997
- Hong Kong, 1997
- Argentina, 2001
- Korea, 1997
- Malaysia, 1997
- Spain, 1977
- Thailand, 1997



**Recovery of GDP From Financial Crises**



## U.S. Outlook Summary

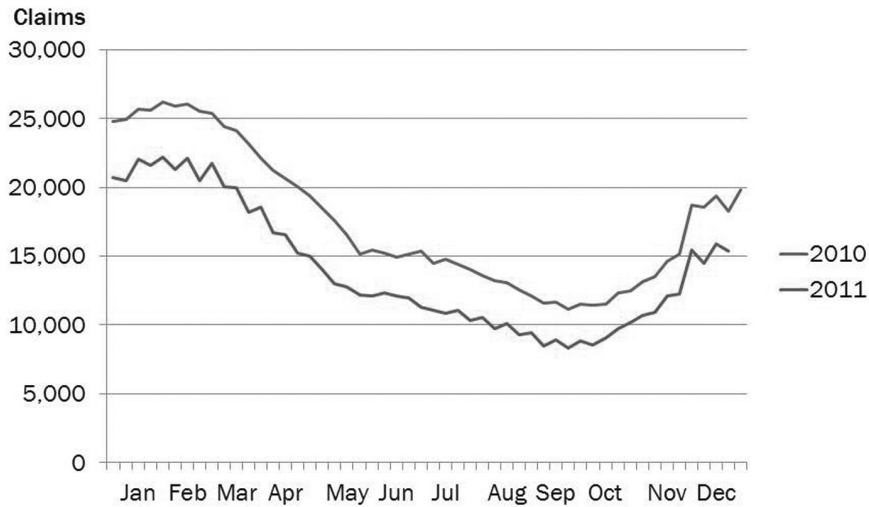
- U.S. will probably avoid another recession
- Euro Zone is already in recession. Will it be mild or severe?
- Continued government cutbacks, at all levels
- Evidence of pent-up demand in a few areas
- A cooling off for commodity and food prices
- Very high unemployment rates persist

### The Montana Economy What's Right and What's Wrong

- |  |  |
|--|--|
| • Energy and natural resources are booming | • Housing bust hangover still lingers      |
| • Healthy increases in farm gross receipts | • Retail remains weak                      |
| • Labor market is healing                  | • Government cutbacks being felt           |
| • Consumer confidence is higher            | • Wood products cutbacks still reverberate |

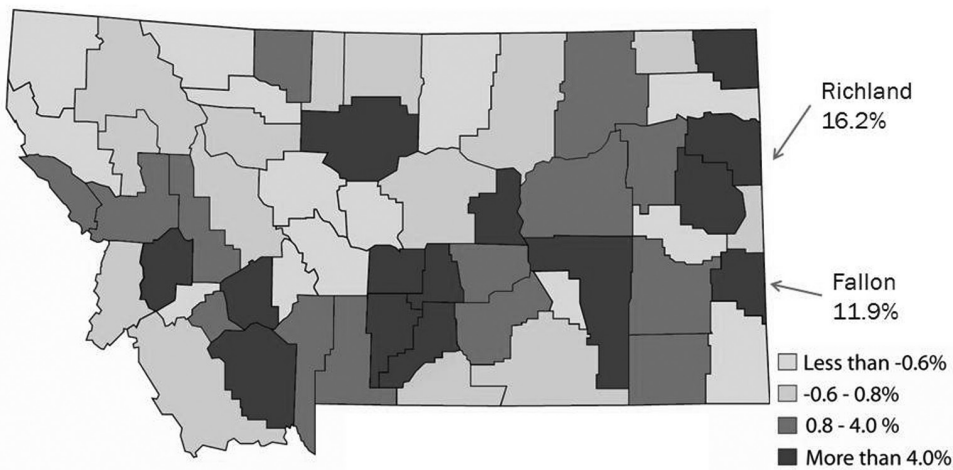


**Lower Unemployment Claims  
Sign of Labor Market Improvement**



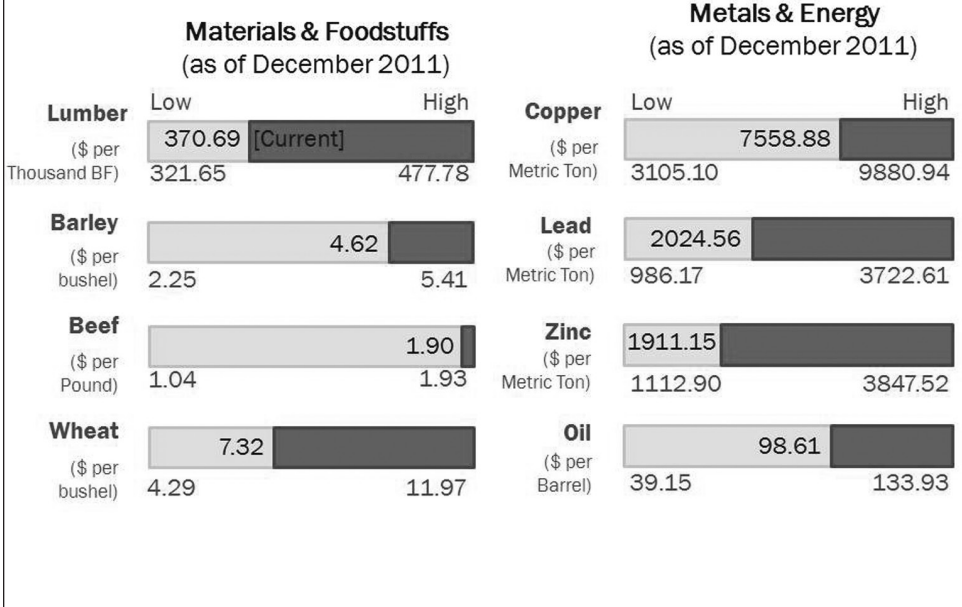
Continuing Claims for Unemployment Insurance, Montana  
Source: U.S. Department of Labor

**Fastest Growth  
is in the East**



Percentage Growth in Real Wage and Salary Disbursements, 2010Q2 - 2011Q2

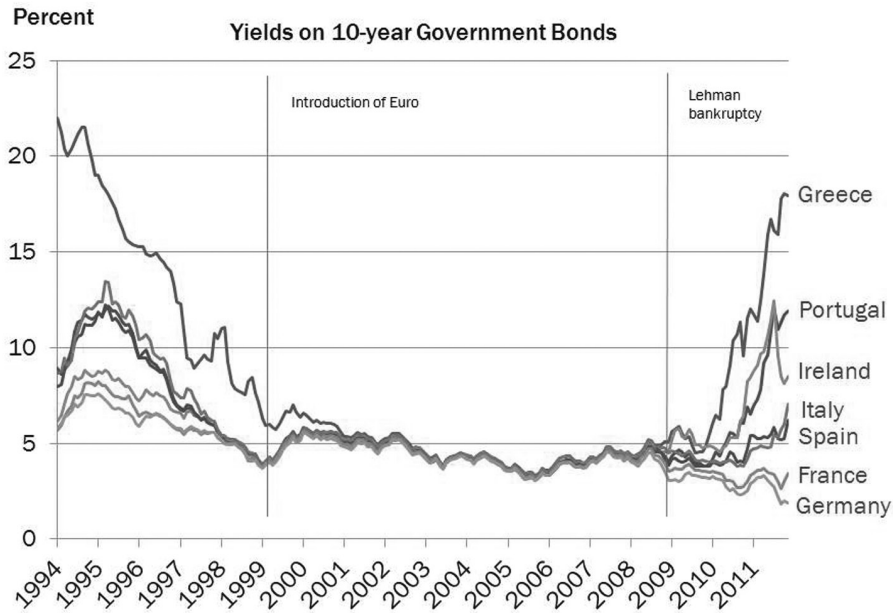
**Commodity Prices:  
Favorable to Montana?**



**Labor Income and  
Basic Industries, Montana**



**The EU Currency Experiment is Unraveling**

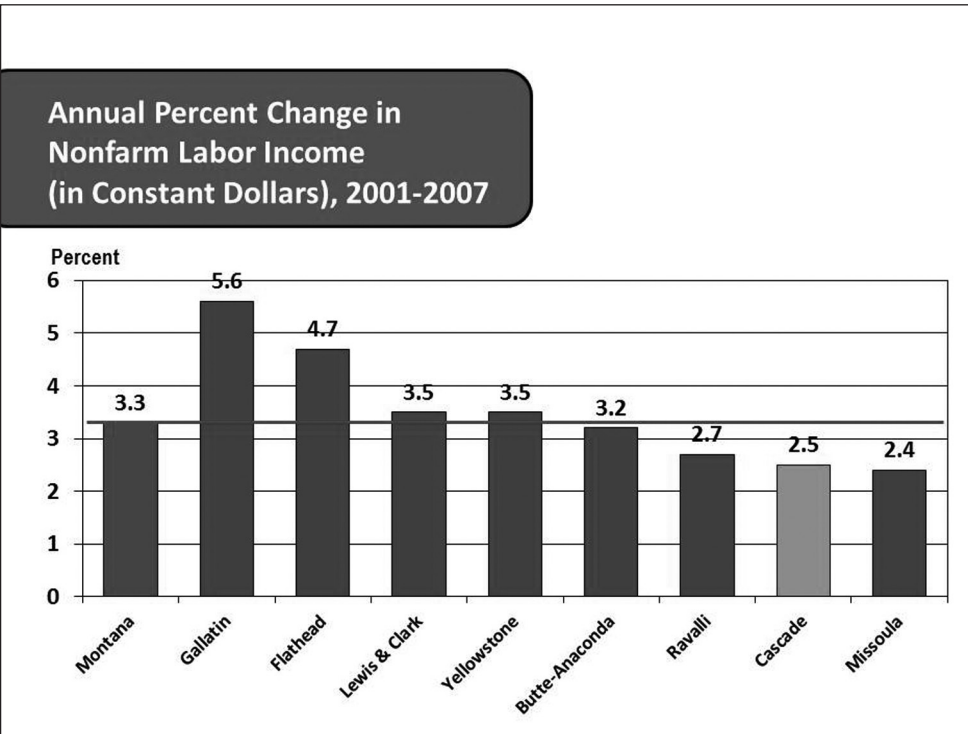
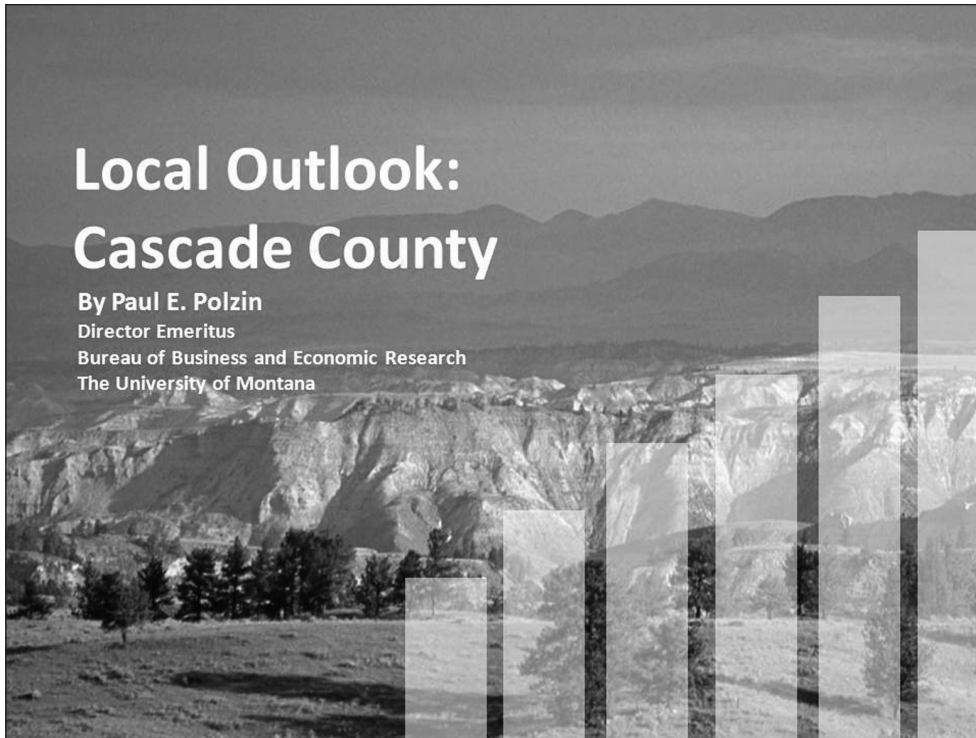


**Top 10 Countries Buying Montana Products**

In millions of dollars:

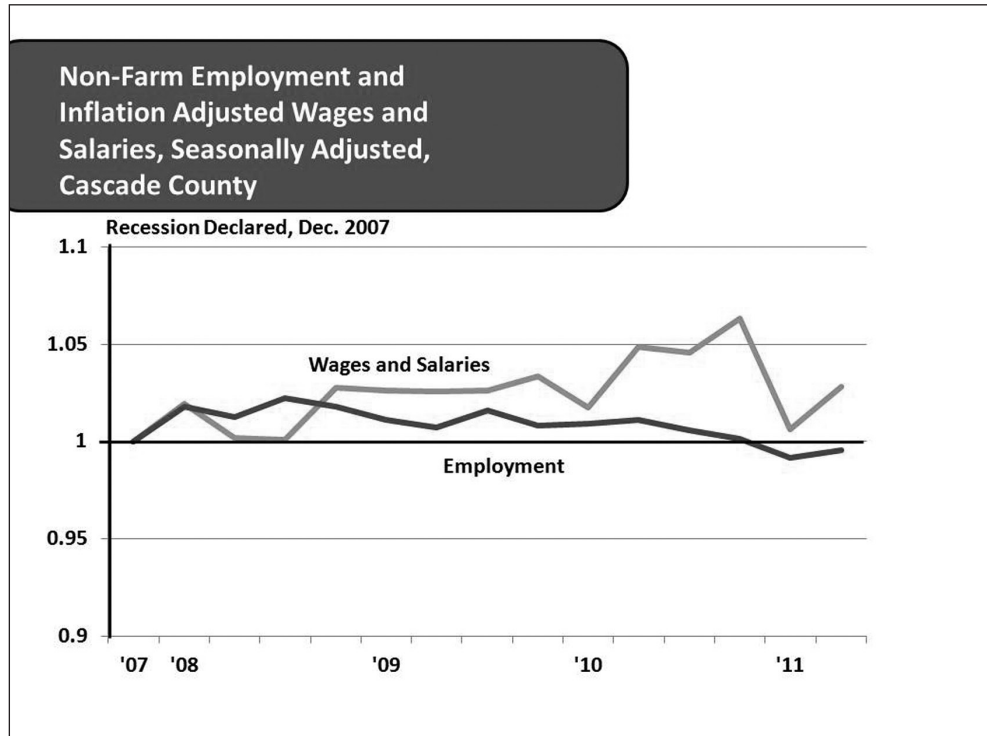
1	Canada	\$539.7
2	Republic of Korea	186.8
3	China (Mainland)	122.9
4	Japan	109.8
5	China (Taiwan)	93.5
6	Mexico	79.9
7	United Kingdom	37.3
8	Germany	25.6
9	Belgium	24.8
10	Netherlands	18.5

\*These figures do not include bulk wheat exports



# Recession Scorecard

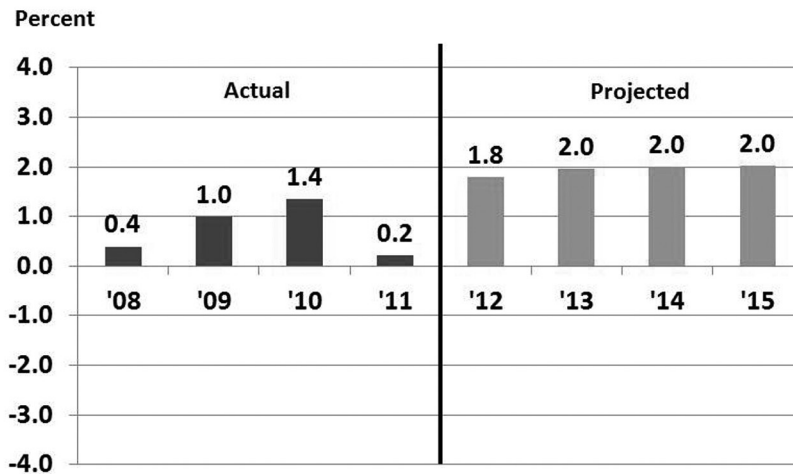
	Duration (Years)	Severity (% Change)
Lewis & Clark County	<b>What Recession?</b>	
Cascade County		
Yellowstone County	1	-1.5%
Butte - Anaconda	1	-0.8%
Missoula County	3-4	-4.9%
Gallatin County	2	-7.9%
Flathead County	4	-10.2%
Ravalli County	4	-11.4%



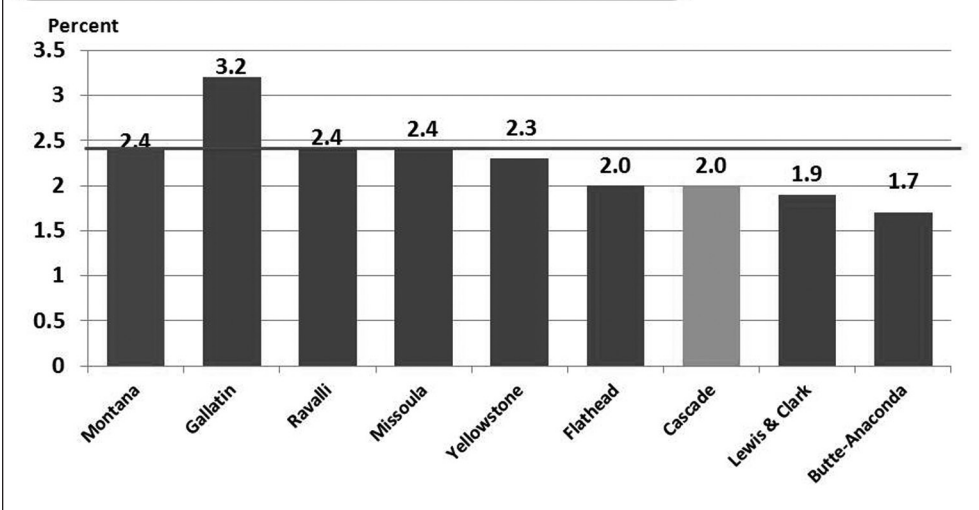
### Cascade County's Economic Base 2009-2011

• Other	5%	
• Transportation	7%	Energy Growth
• State Gov't and Higher Ed.	7%	Pay Freeze
• Manufacturing *	7%	Stable
• Trade Center - Other	7%	Stable
• Trade Center - Health	11%	? Reform
• Federal Civ.	10%	Stable at Best
• Malmstrom AFB	46%	Stable, BRAC?
<b>Construction</b>		<b>Not Before 2013</b>
* Including Oil Refineries		

### Actual and Projected Change in Nonfarm Earnings, Cascade County, 2008-2015



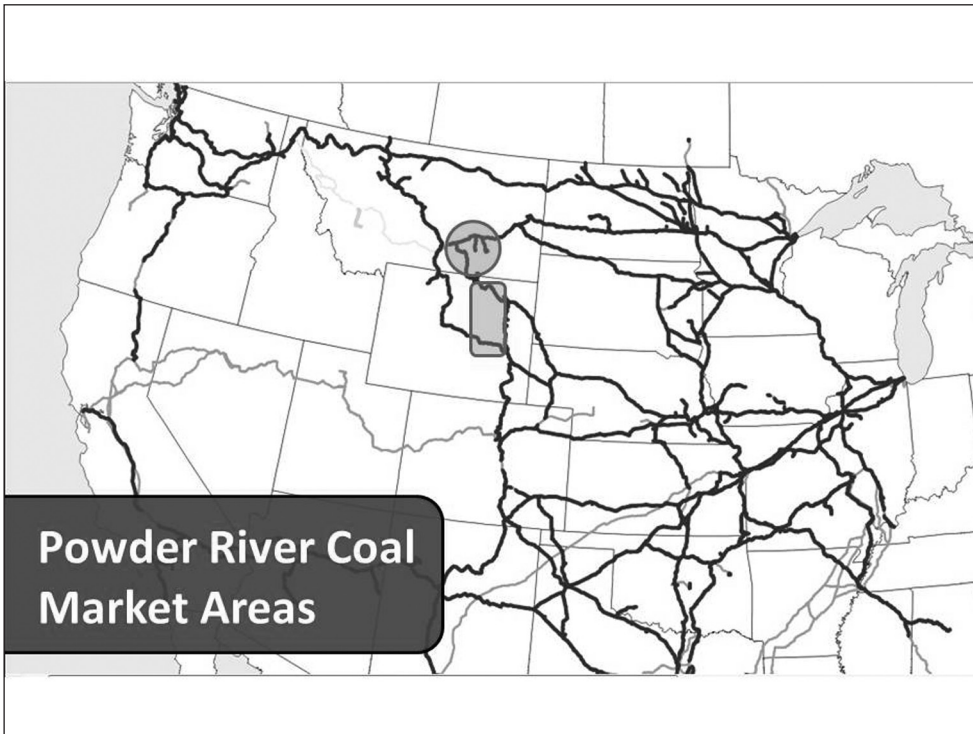
**Projected Annual Percent Change  
in Nonfarm Labor Income  
(in Constant Dollars) 2011-2015**



**Montana's Energy  
Transportation Systems**

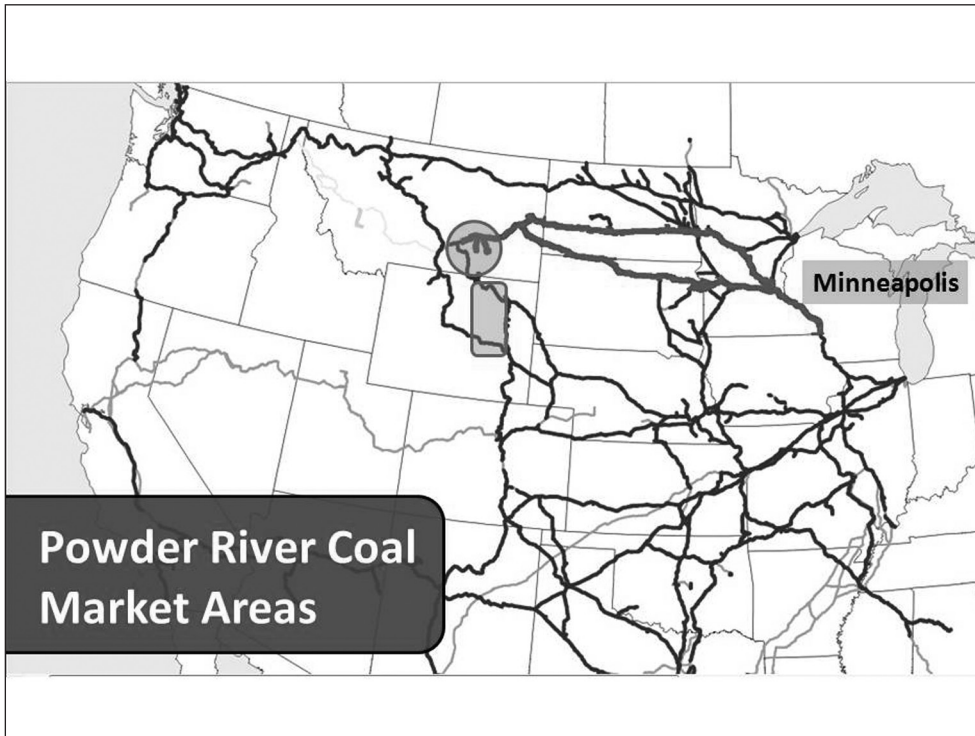
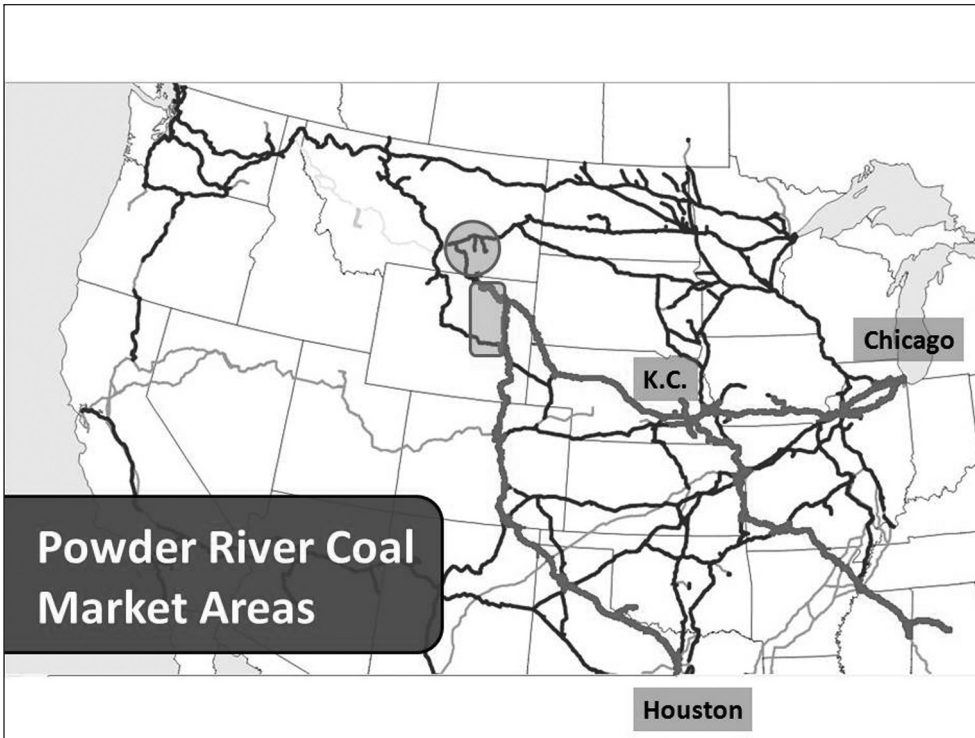
## Coal Reserves and Production

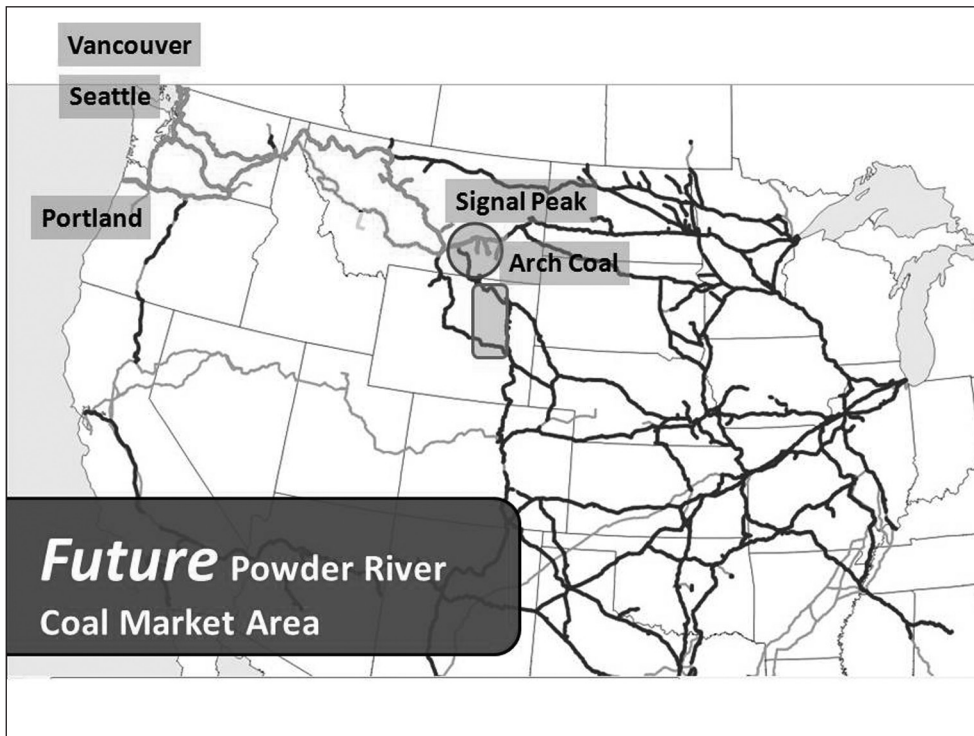
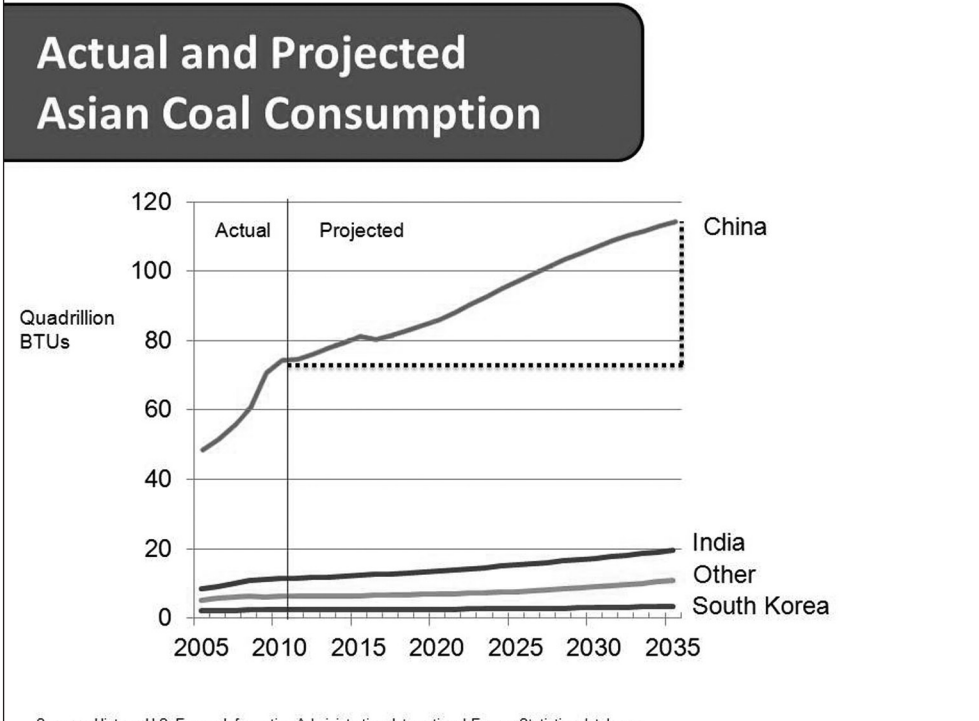
	Reserves (Billions of Tons)	
<b>Montana</b>	<b>119.0</b>	
<b>Wyoming</b>	<b>61.0</b>	





Notes

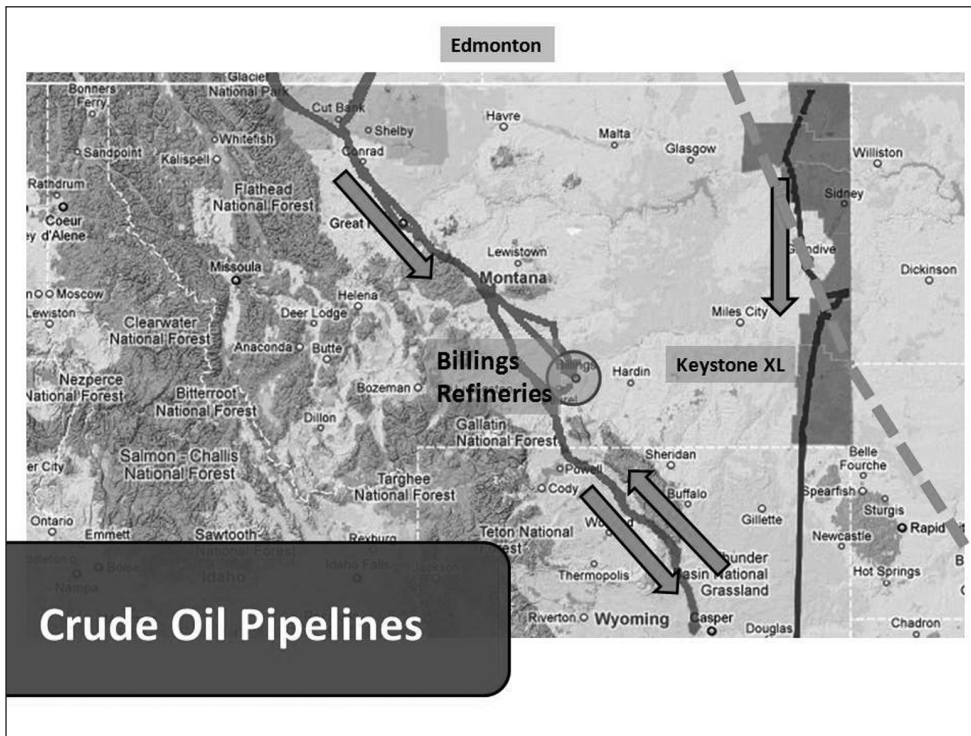


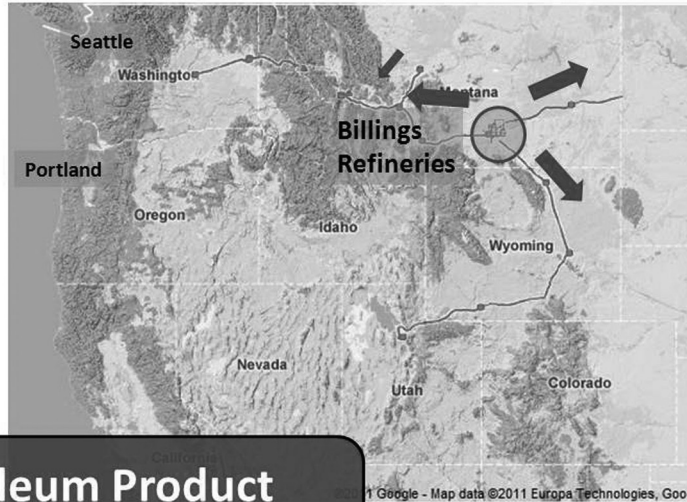


## Montana Crude Oil, 2010

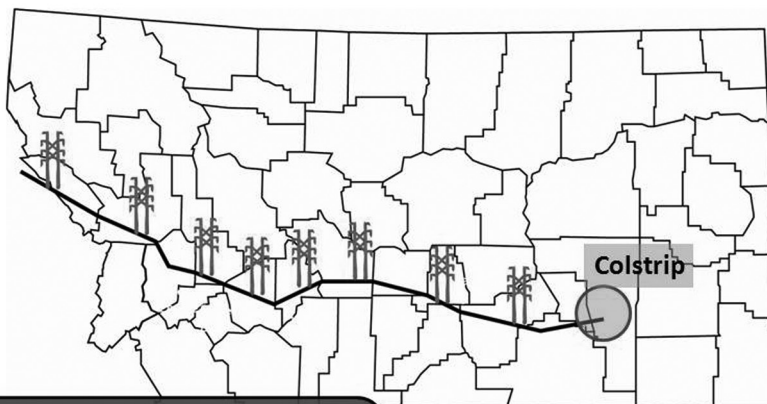
	Barrels
<b>Production</b>	<b>25,317,532</b>
<b>Refined in MT</b>	<b>1,574,362</b>
<b>Percent</b>	<b>6.21</b>

Source: Montana Oil and Gas Conservation Division.





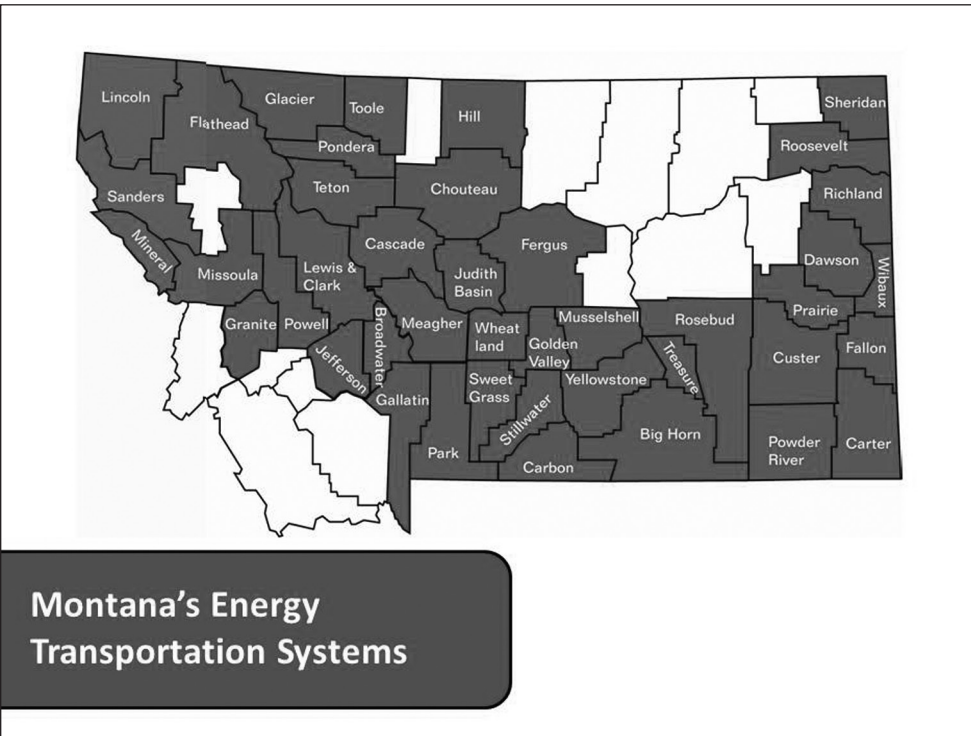
**Petroleum Product Pipeline**



**Colstrip 500 KV Transmission Line**


**Transmission Line  
Property Taxes  
to Counties**

County	Estimated Taxes
Rosebud	\$492,000
Treasure	\$952,000
Big Horn	\$241,000
Yellowstone	\$1,467,000
Golden Valley	\$372,000
Stillwater	\$373,000
Wheatland	\$615,000
Meagher	\$865,000
Broadwater	\$563,000
Jefferson	\$401,000
Powell	\$322,000
Granite	\$401,000
Missoula	\$568,000
Mineral	\$784,000
<b>TOTAL</b>	<b>\$8,417,000</b>



# Soaring, Gliding, or 'Bumpy Ride'? Changes in Tourism

Norma Nickerson, Director  
Institute for Tourism and Recreation Research  
University of Montana



## 2012 Annual Outlook Seminar



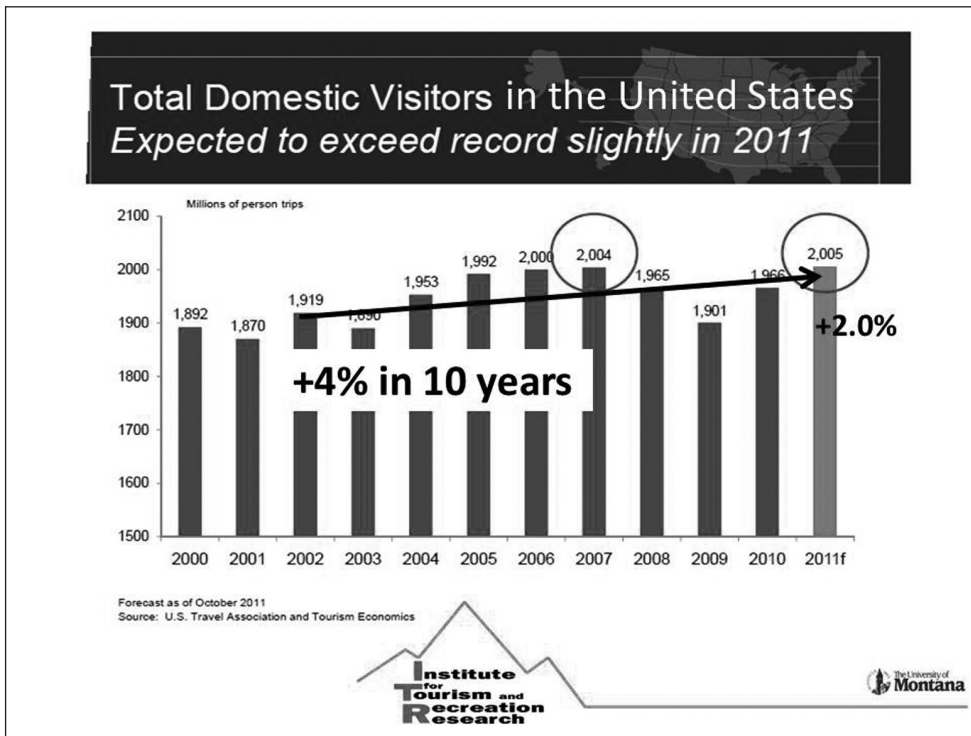
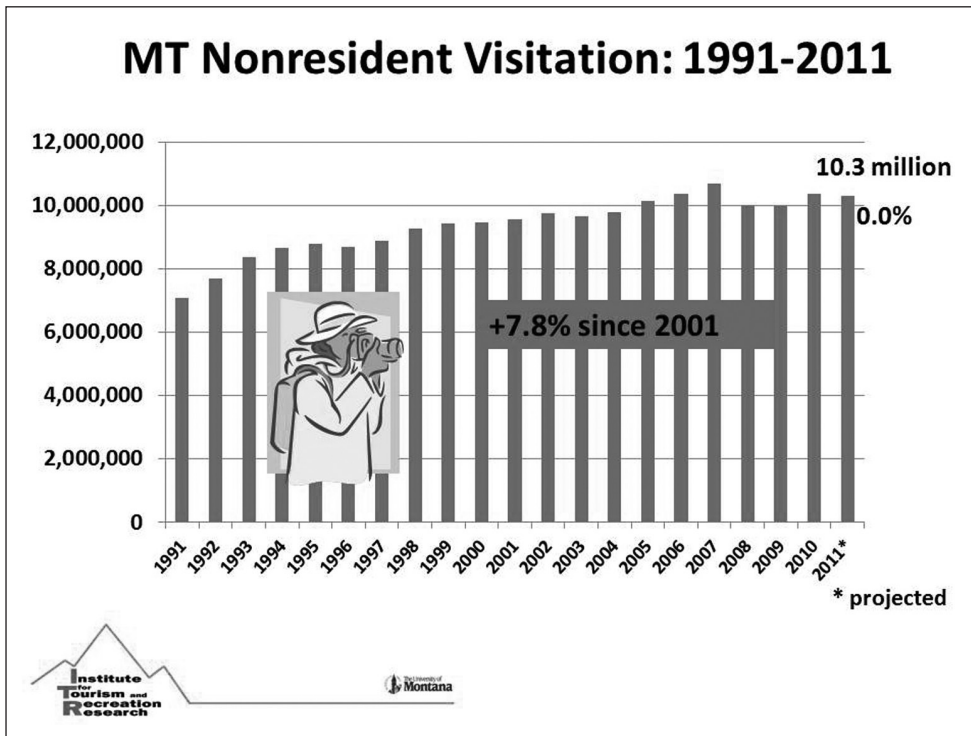
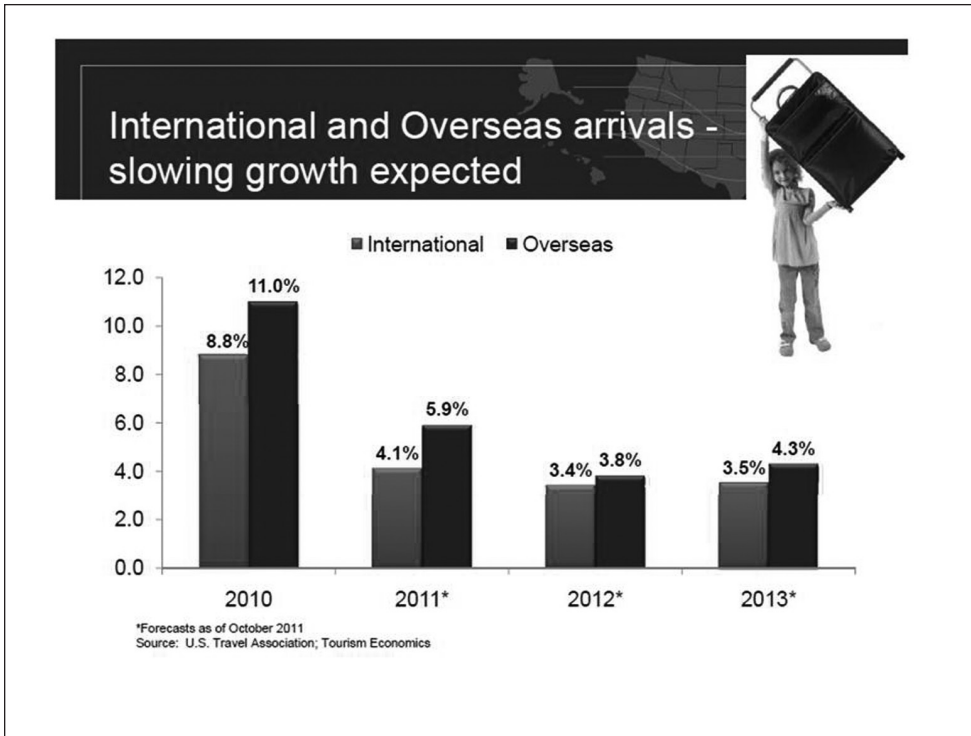
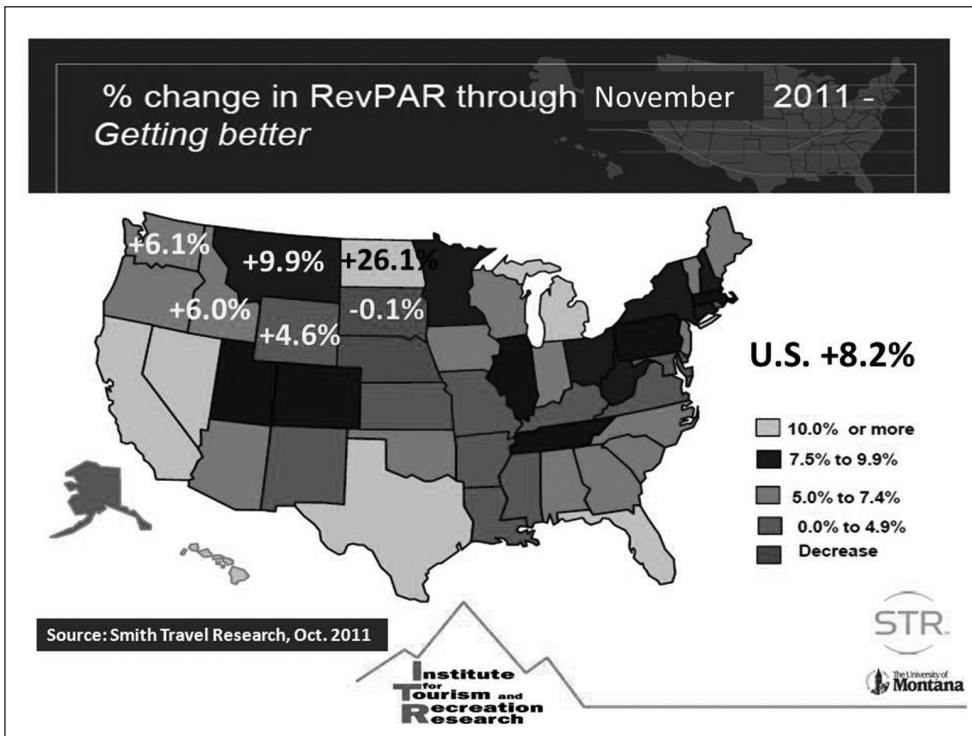
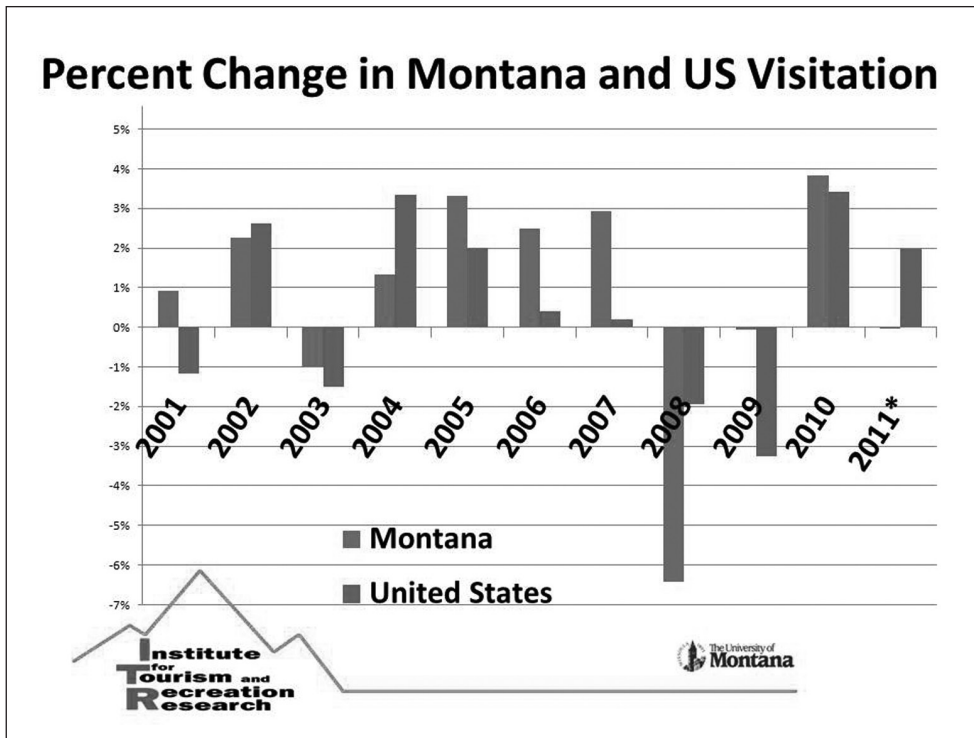



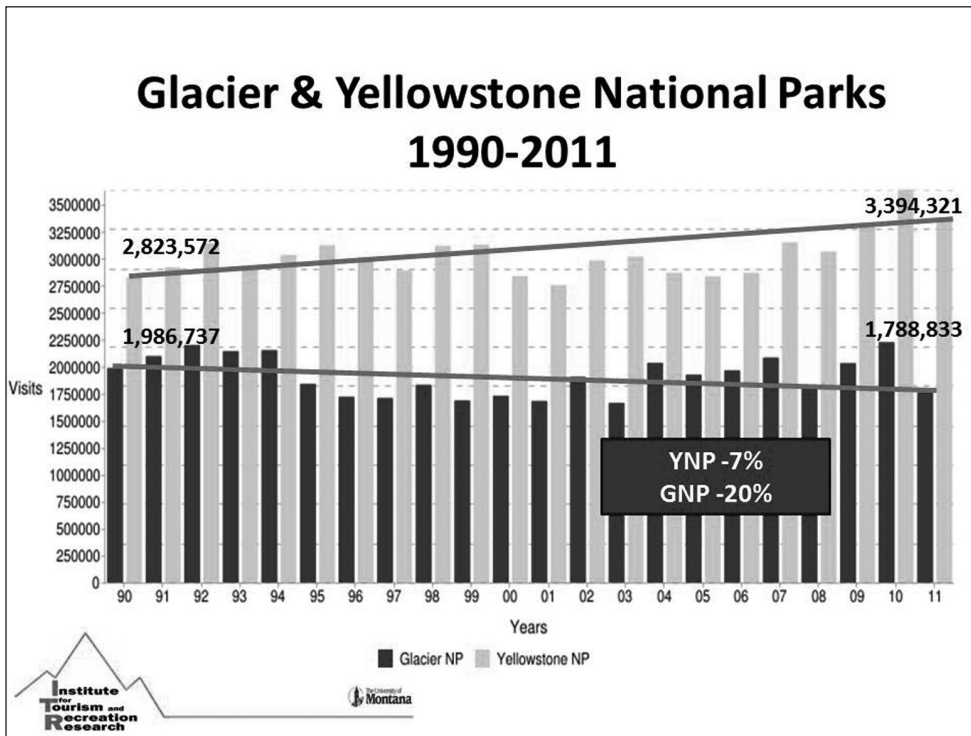
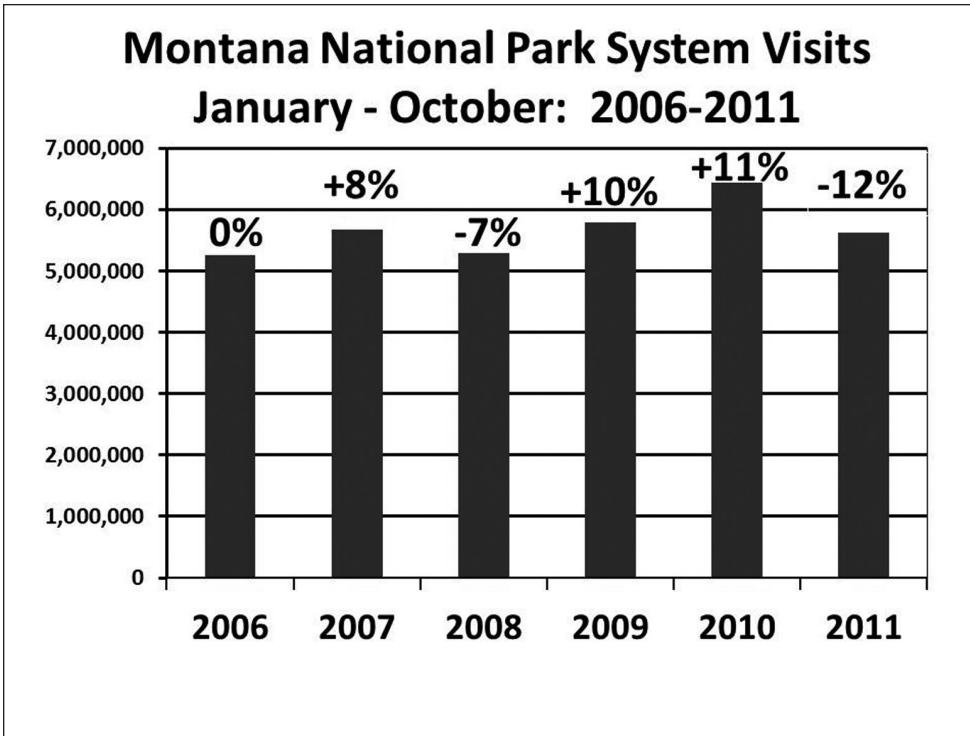
Photo: Norma Nickerson

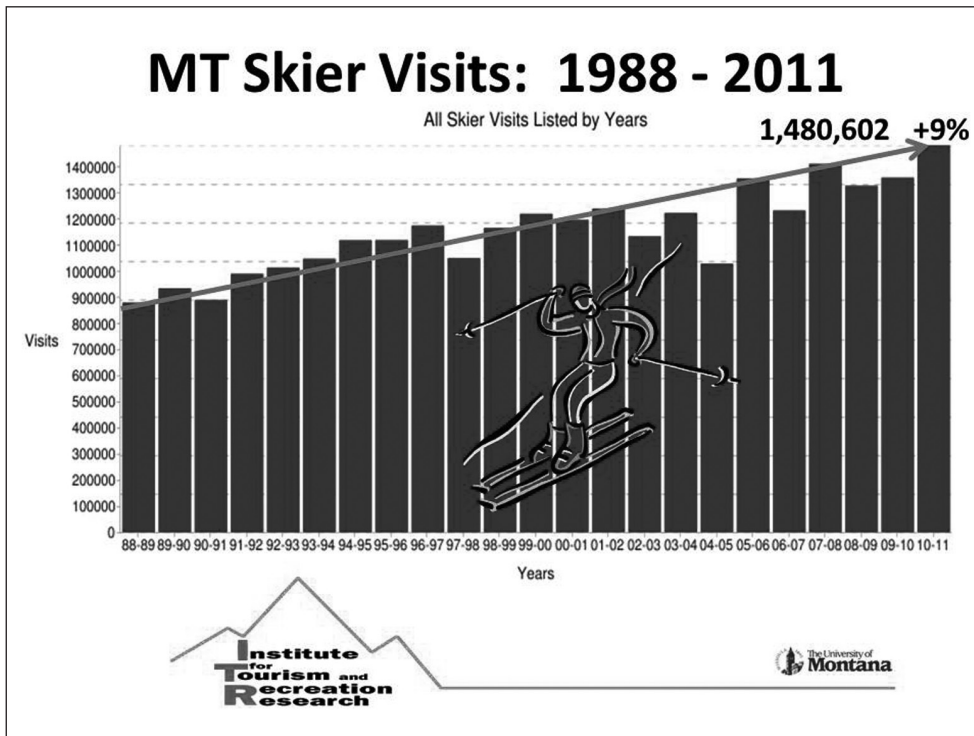
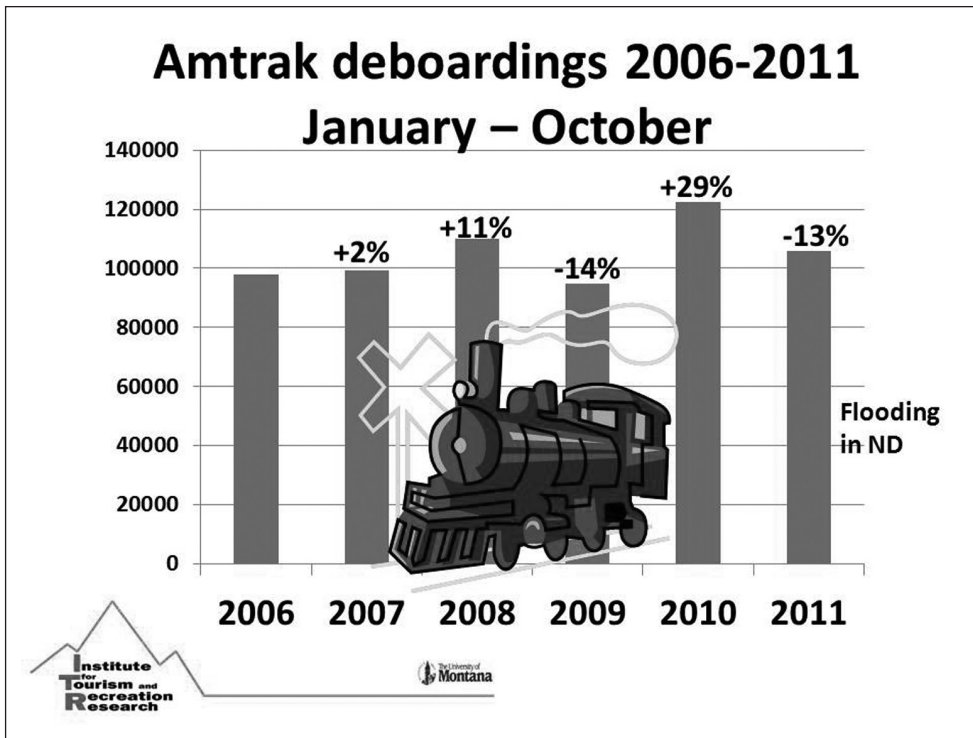


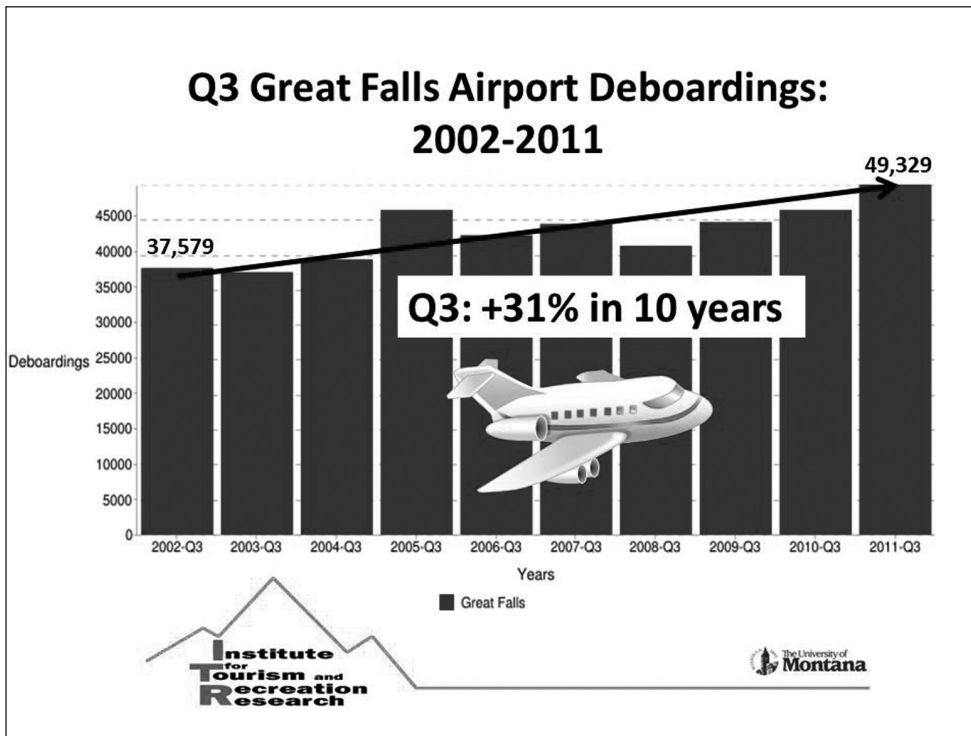
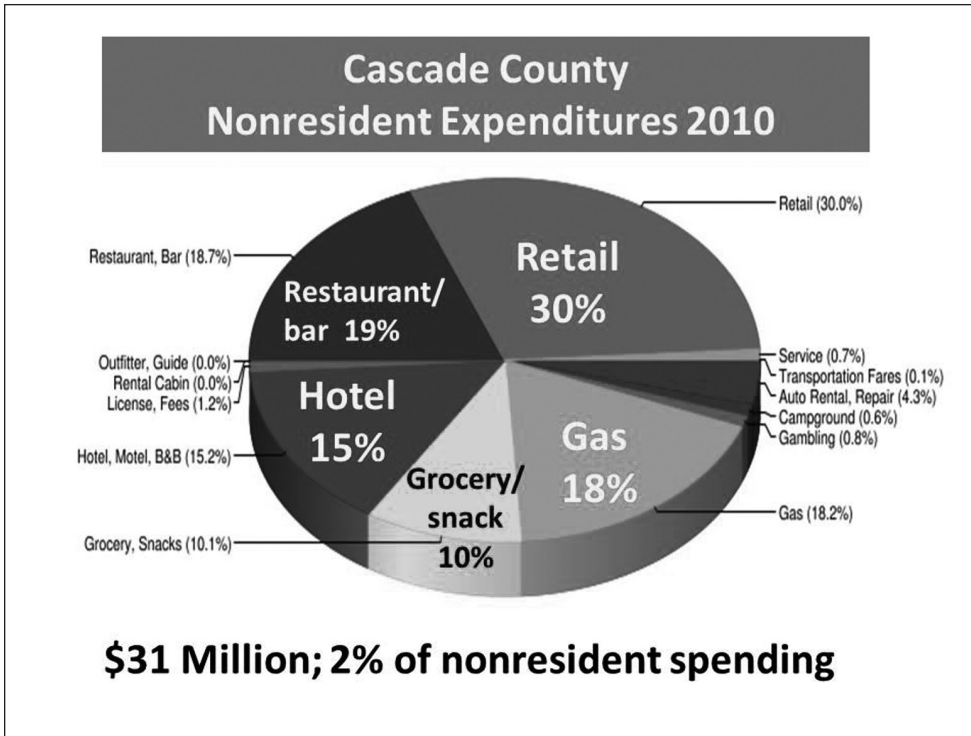


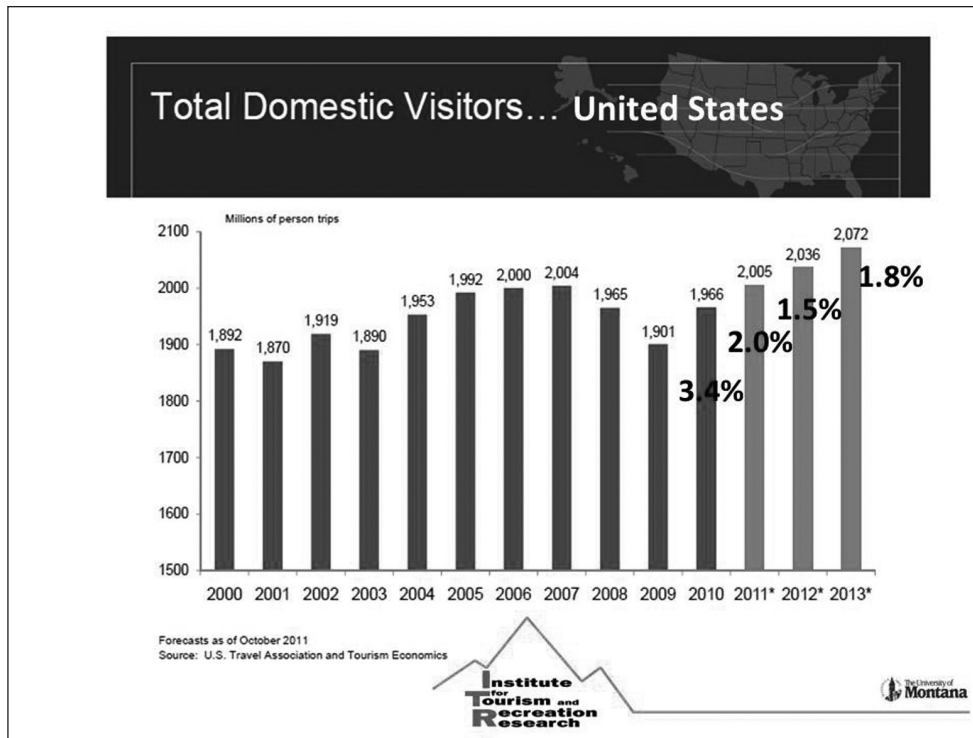










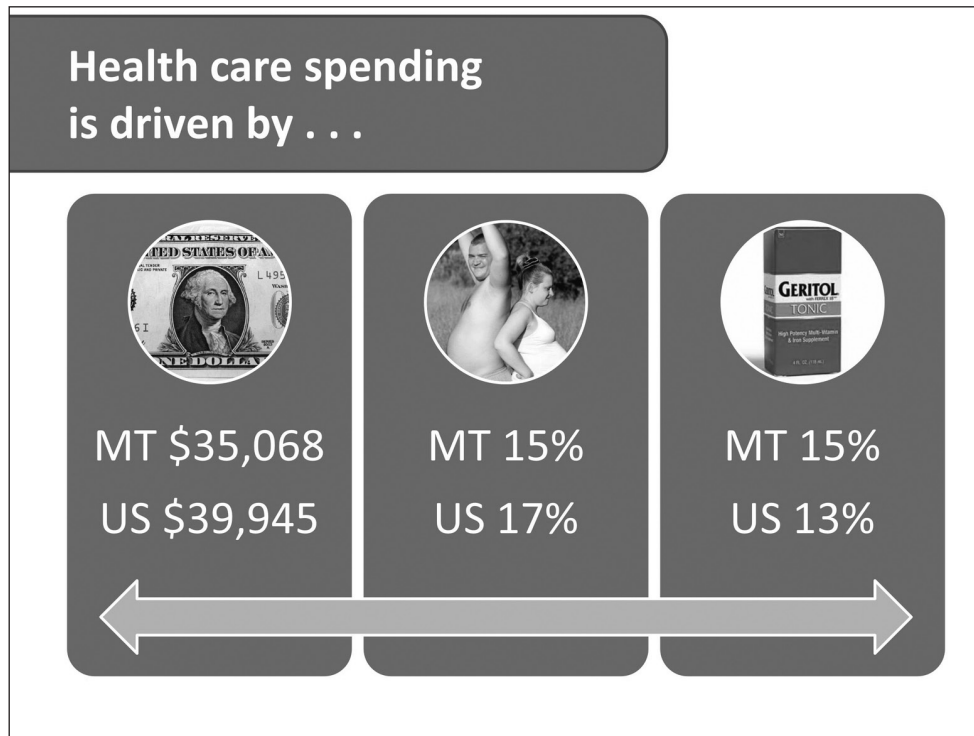
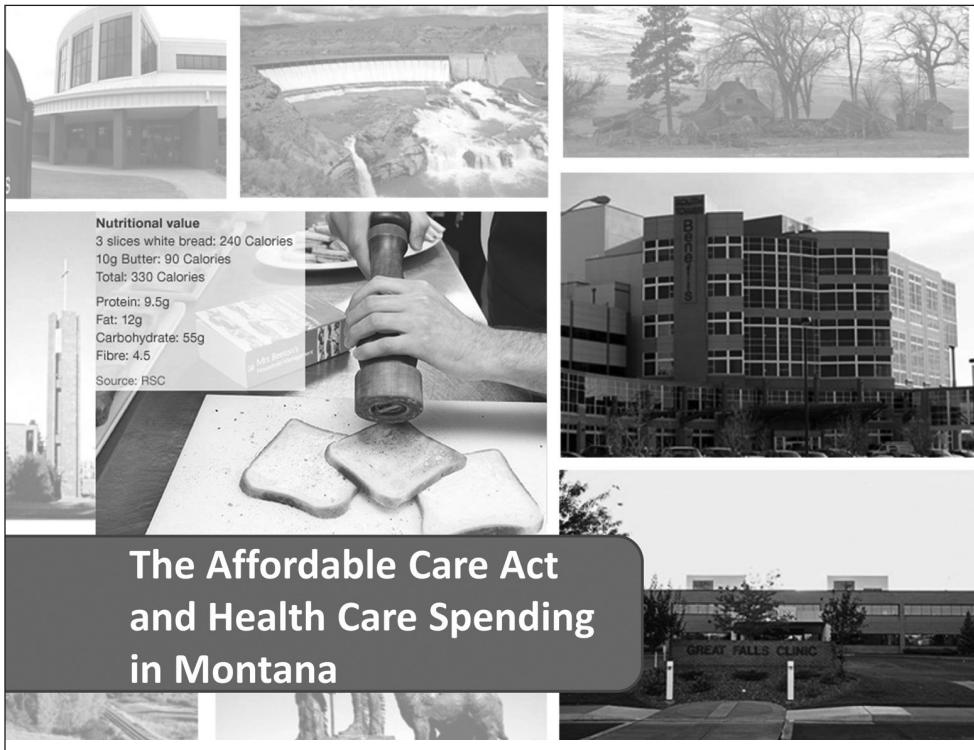


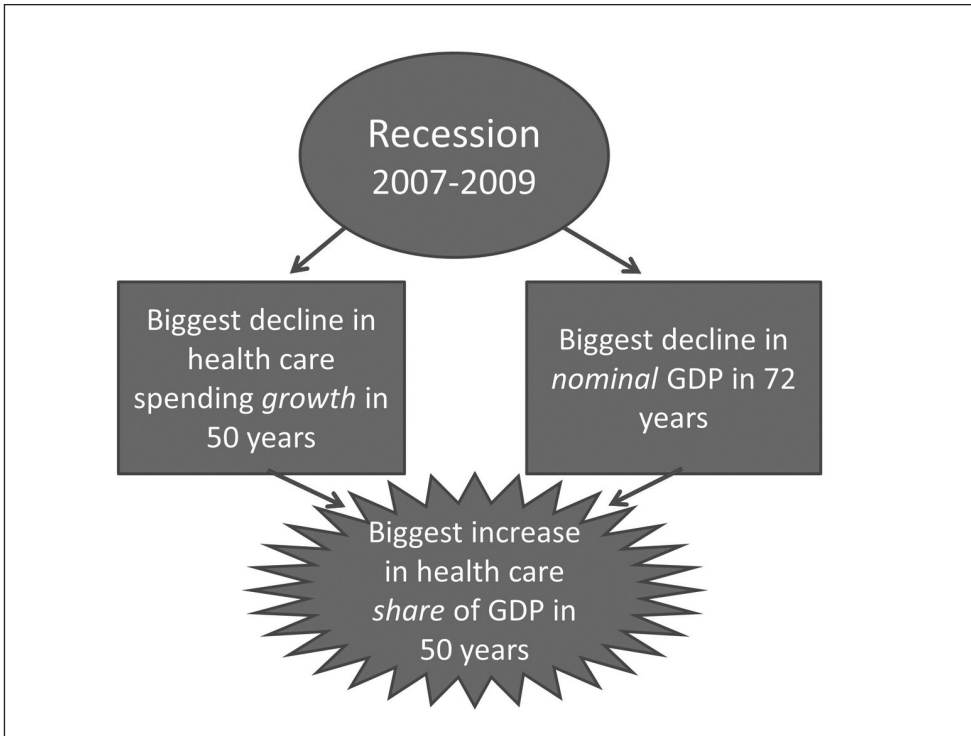
## 2012 MT Tourism Businesses

- 48% expect growth in 2012
- 40% expect to stay the same
- Overall: 2% growth expected in 2012

## 2012 National Tourism

- 1.5% growth in domestic visitors
- 3.4% growth in International visitors
- 3.8% growth in overseas visitors





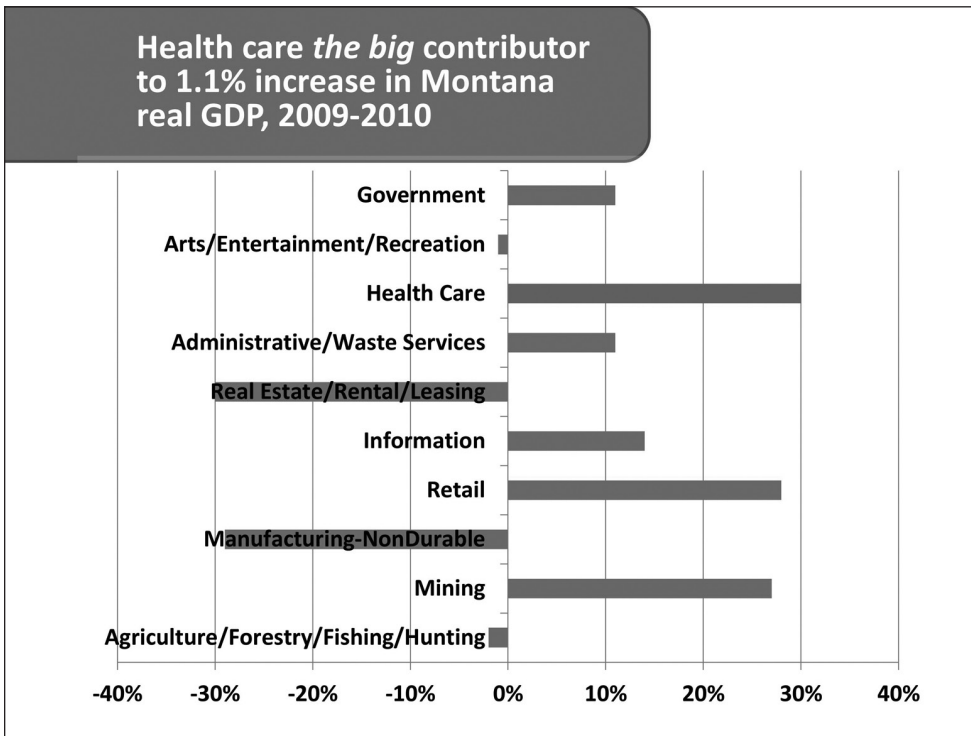
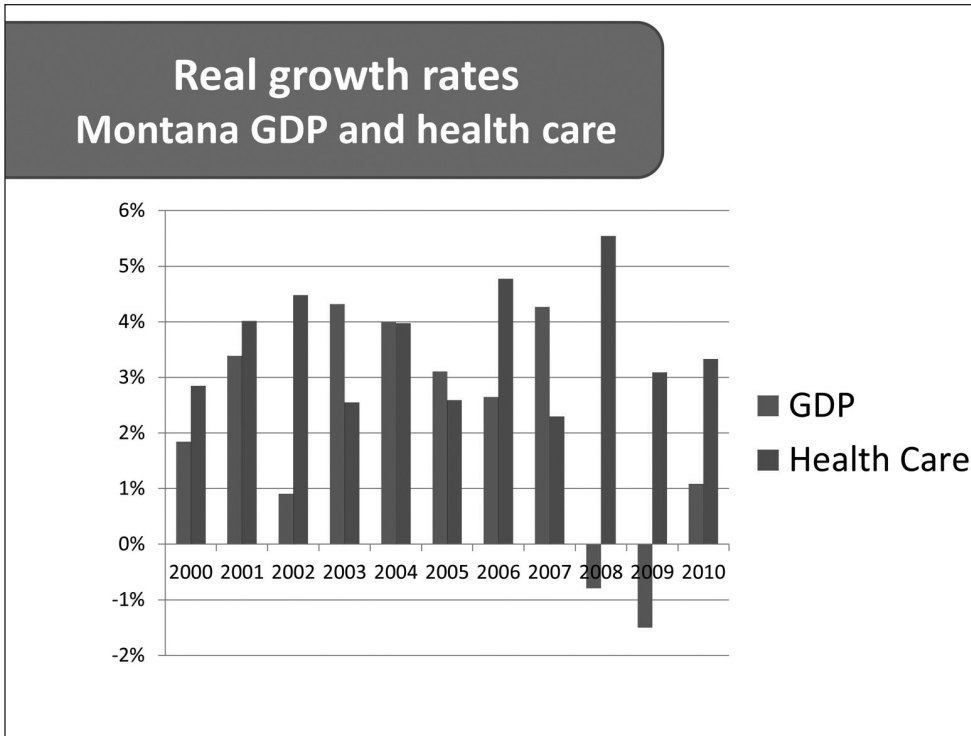
### Health care is big in Montana...

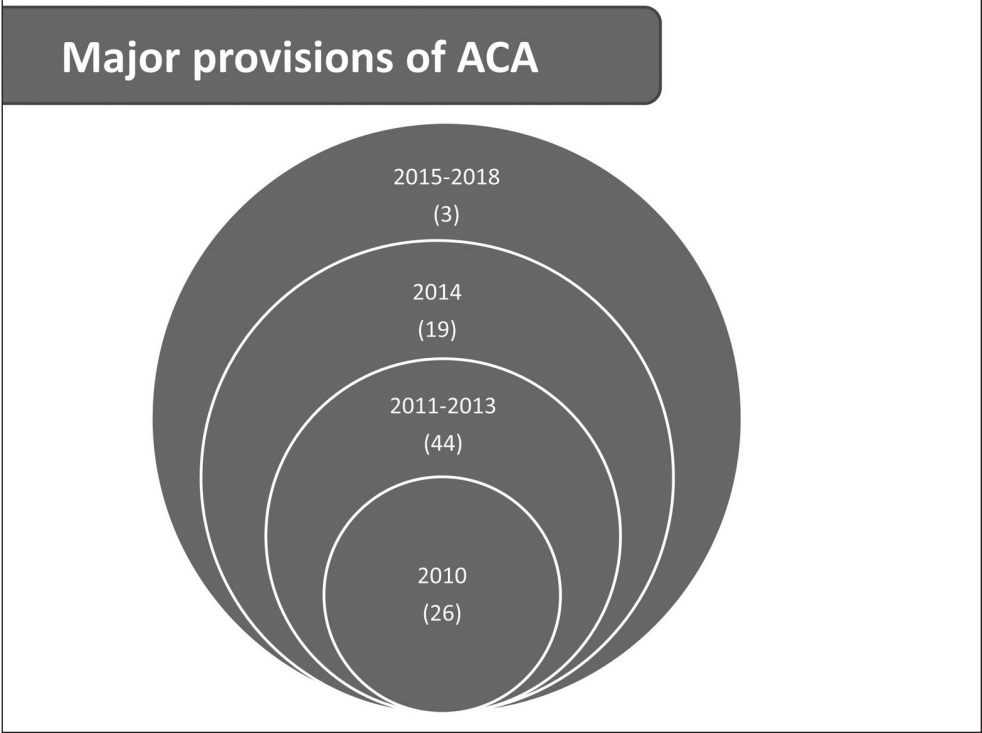
\$7.2 billion in PHCE

Health care share of economy




Growth Rate

The complex block features a dark grey header with the text 'Health care is big in Montana...'. Below the header are three vertical panels. The first panel has a circular icon of a dollar sign on a coin and the text '\$7.2 billion in PHCE'. The second panel has a circular icon of a person's hands and the text 'Health care share of economy'. The third panel has a circular icon of a car and the text 'Growth Rate'. A large, light grey double-headed arrow is positioned at the bottom, spanning the width of the three panels.



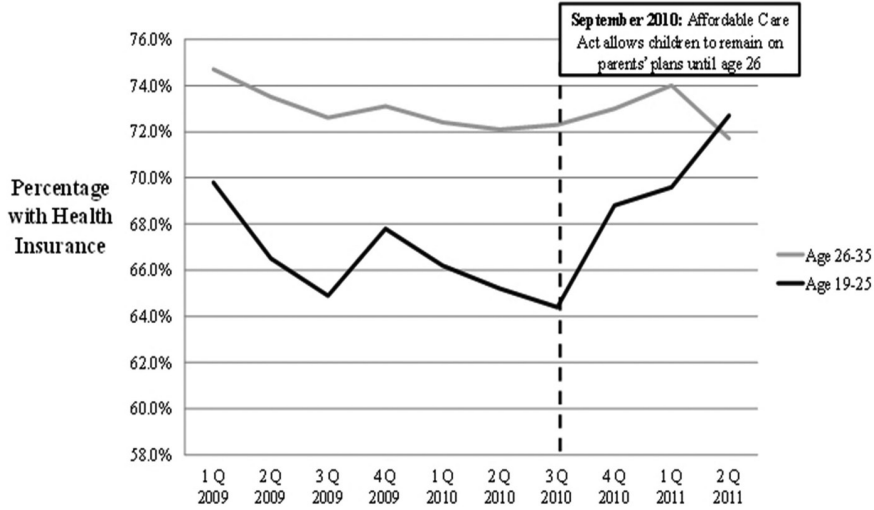


### ACA provisions

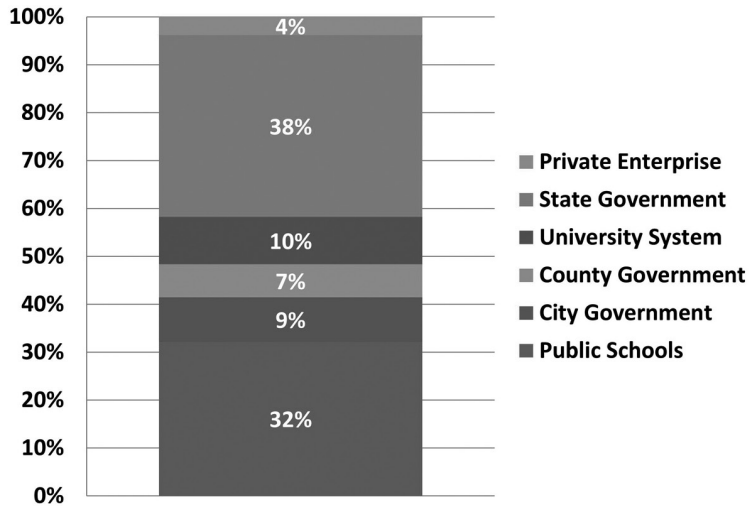
		
10% Tanning bed tax 7/1/2010	Adults under 26 9/23/10	Early Retiree Reinsurance Program 6/29/2010



### Health insurance coverage for young adults



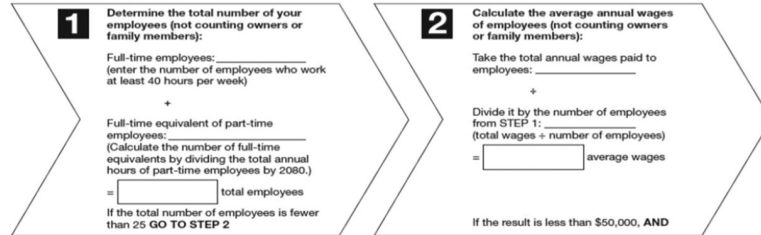
### Distribution of \$3.8 million ERRP Funds, Montana



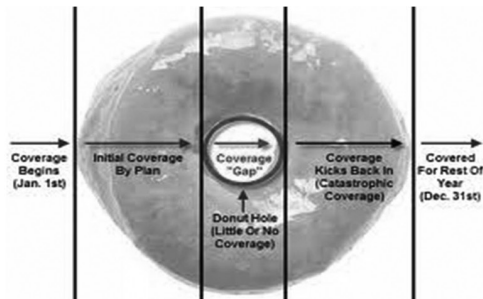
# Wasn't so simple Small Business Tax Credit

## 3 SIMPLE STEPS

If you are a small employer (business or tax-exempt) that provides health insurance coverage to your employees, determine if you may qualify for the **Small Business Health Care Tax Credit** by following these three simple steps:



**3** You pay at least half of the insurance premiums for your employees at the single (employee-only) coverage rate, then you may be able to claim the **Small Business Health Care Tax Credit**. Find out more information at [IRS.gov](http://IRS.gov)

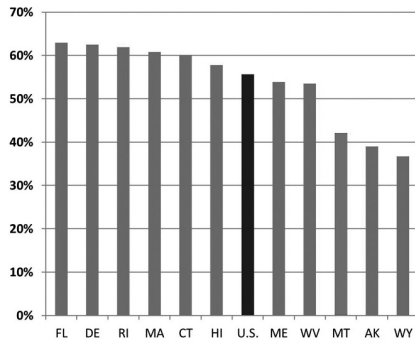


	# of Gap Beneficiaries	Total Gap Discount	Average Gap Discount
MONTANA	6,075	\$3,511,260	\$578
Belt	13	\$5,900	\$456
Great Falls	448	\$252,881	\$564
Cascade County	509	\$290,506	\$571

## No cost sharing

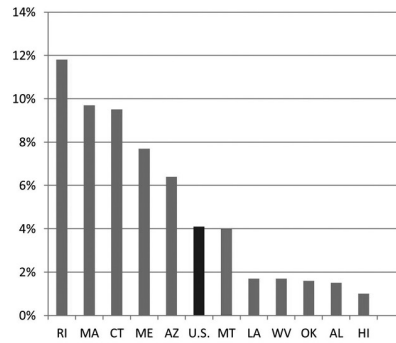
### Medicare Preventive Services

Beneficiaries Using One or More Preventive Services



### Medicare Annual Wellness Exam

Beneficiaries Using Wellness Exam



## Premiums increase if you are a person of “means”

### Medicare Part B Premiums

Joint Tax Return (000's AGI)	Monthly Increase	Total Monthly Premium
≤\$170	\$0	\$115.40
>\$170 ≤\$214	\$46.10	\$161.50
>\$214 ≤\$320	\$115.30	\$230.70
>\$320 ≤\$428	\$184.50	\$299.90
> \$428	\$253.70	\$369.10

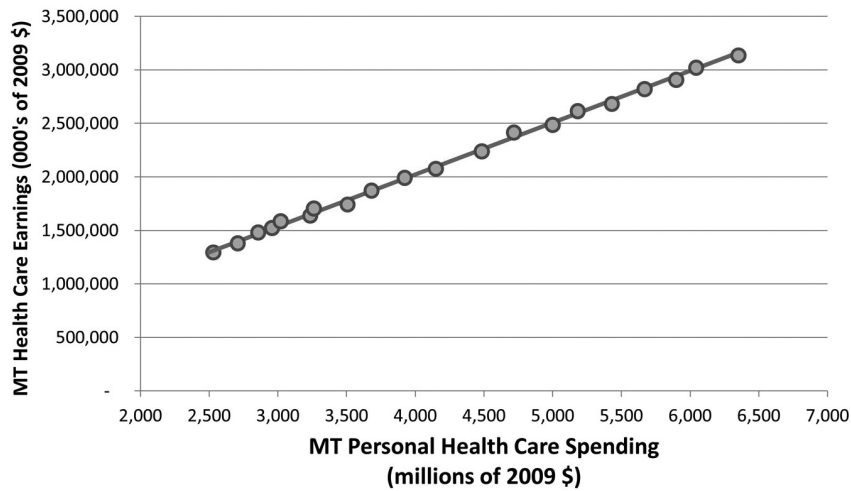
### Medicare Part D Premiums

Joint Tax Return (000's AGI)	Monthly Increase	Total Monthly Premium
≤ \$170	\$0	\$41.43
> \$170 ≤ \$214	\$12.00	\$53.43
> \$214 ≤ \$320	\$31.10	\$72.53
> \$ 320 ≤ \$428	\$50.10	\$91.53
> \$428	\$69.10	\$110.53

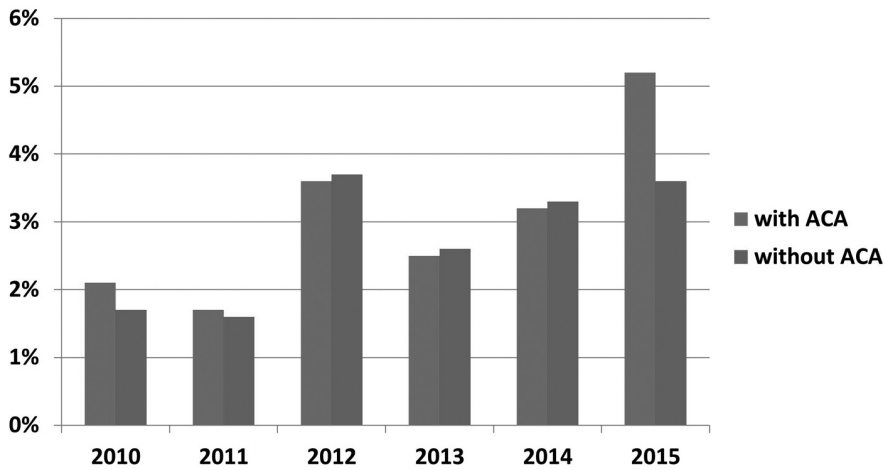
### Medicare and Medicaid per enrollee spending in Montana

	Average Annual Growth (%)		% of MT total personal health care spending			% of U.S. per enrollee spending		
	'98-'04	'04-'09	1998	2004	2009	1998	2004	2009
Medicare	6.3	6.3	17.4	17.2	19.3	73	76	73
Medicaid	3.3	5.9	13.7	13.5	13.2	122	123	146

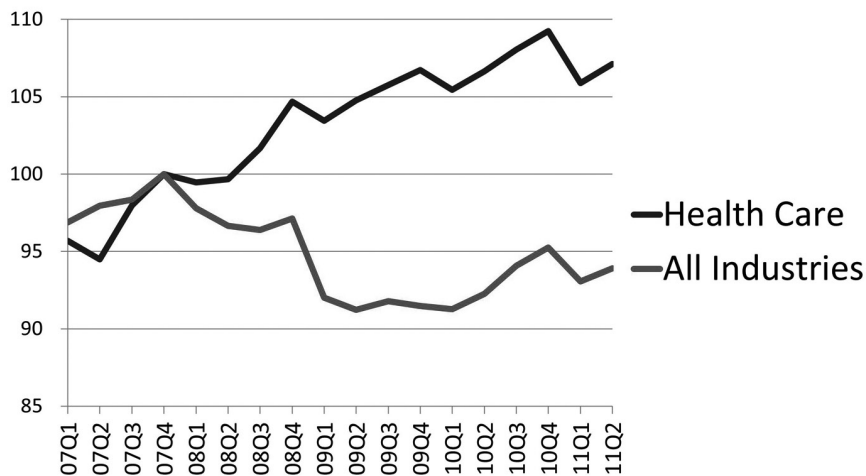
### Personal health care spending and health care earnings, Montana, 1990-2009



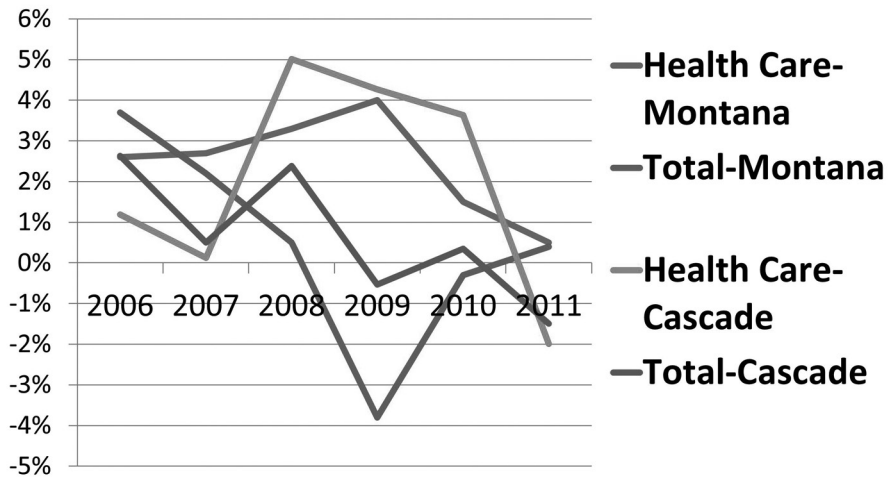
### Projected annual percent change in real health care earnings, Montana



### Recession and post-recession real earnings in Montana



### Health insurance coverage for young adults



Economic recovery?



Challenge to the ACA?



No historical experience for ACA reforms?



Provider responses?

# 2012 Montana Agricultural Outlook

**George Haynes**

Department of Agricultural Economic & Economics  
MSU Extension

Data Source: National Agricultural Statistics Service  
Montana Field Office



Mountains & Minds

## 2011 “Recap”

### ■ Crops

- All wheat prices – up 26%
- All wheat production – down 17%
  - Spring Wheat – production down 29%
- Pulse crops

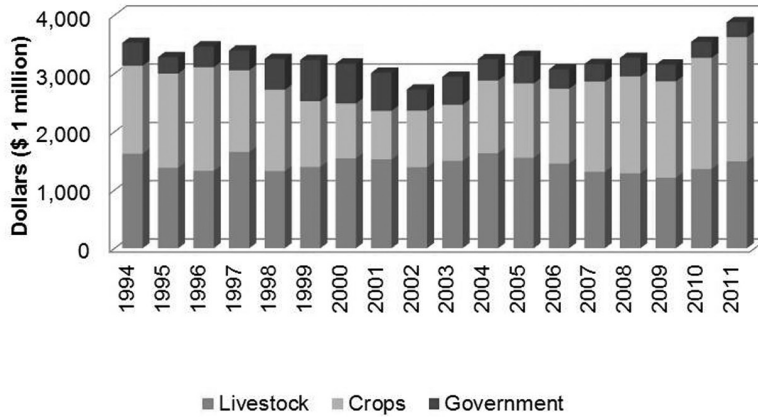
### ■ Cattle

- Cattle and Calf Prices – up 15%+
- Cow Herd - down by 2%, but total herd value is record high



Mountains & Minds

## Gross Revenue Estimates (2011 dollars)

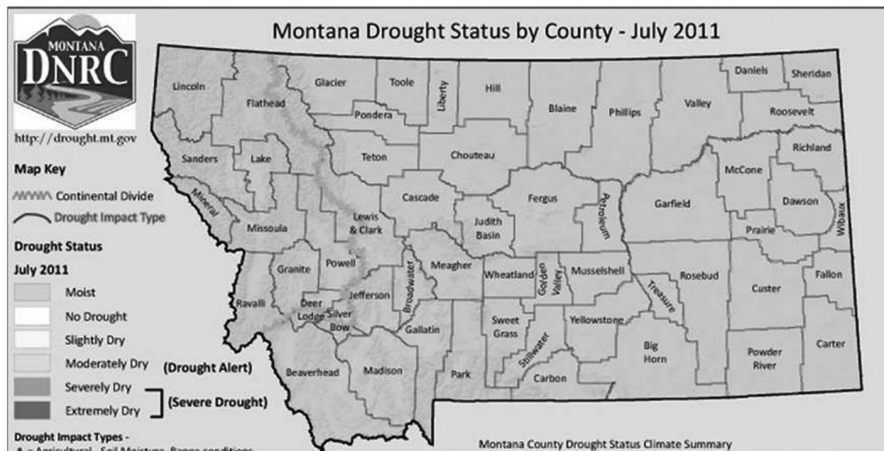


MONTANA STATE UNIVERSITY

EXTENSION

Mountains & Minds

## Drought Status – July 2011



MONTANA STATE UNIVERSITY

EXTENSION

Mountains & Minds





Courtesy of the Billings Gazette

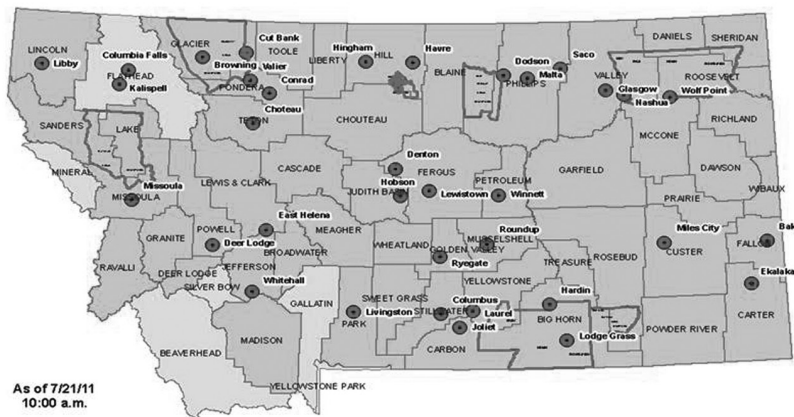


Courtesy of the Billings Gazette

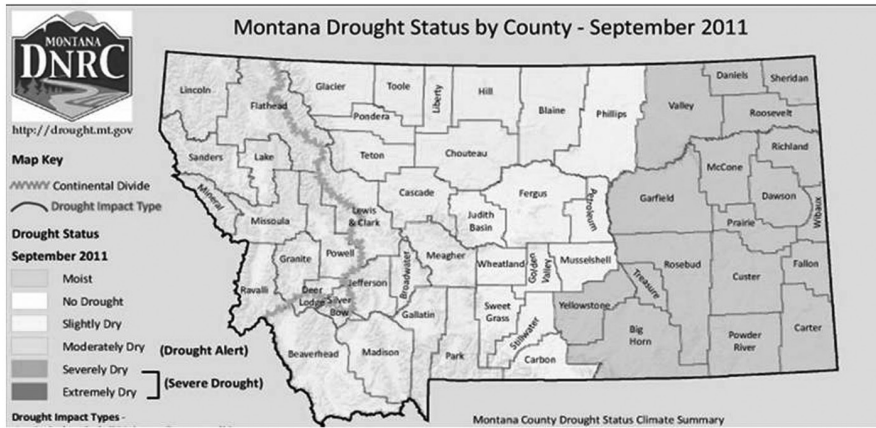


Courtesy of the Billings Gazette

## Locally Declared Emergencies as of July 21, 2011

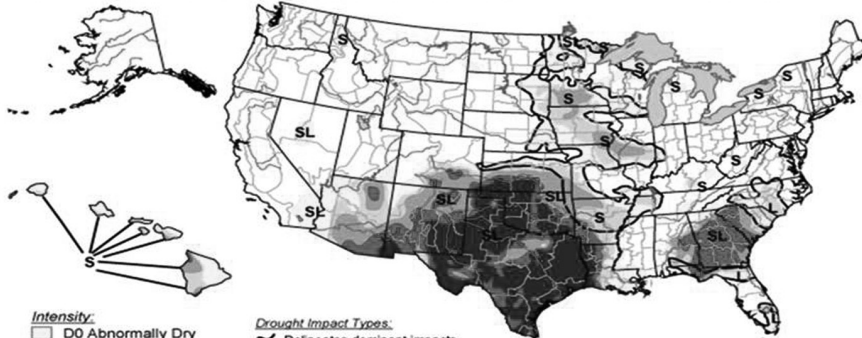


## Drought Status – September 2011



## U.S. Drought Monitor October 11, 2011

Valid 8 a.m. EDT



**Intensity:**  
 D0 Abnormally Dry  
 D1 Drought - Moderate  
 D2 Drought - Severe  
 D3 Drought - Extreme  
 D4 Drought - Exceptional

**Drought Impact Types:**  
 ~ Delineates dominant impacts  
 S = Short-Term, typically <6 months (e.g. agriculture, grasslands)  
 L = Long-Term, typically >6 months (e.g. hydrology, ecology)

The Drought Monitor focuses on broad-scale conditions. Local conditions may vary. See accompanying text summary for forecast statements.

<http://droughtmonitor.unl.edu/>



Released Thursday, October 13, 2011

Authors: R. Tinker/M. Rosencrans, NOAA/NWS/NCEP/CPC

## CROPS (*GRAIN, HAY & PULSES*)

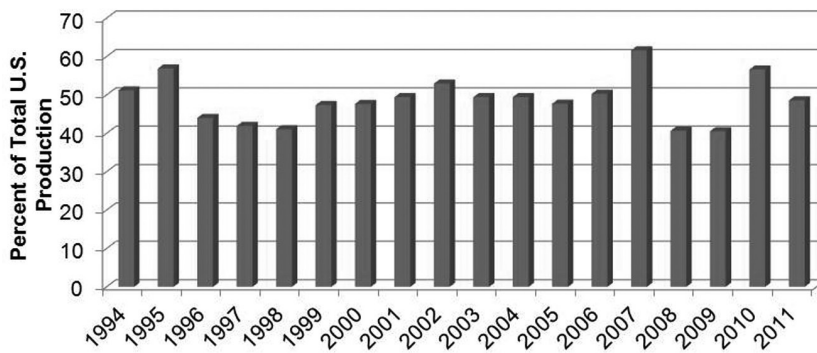


**MONTANA**  
STATE UNIVERSITY

EXTENSION

Mountains & Minds

### Wheat Exports percent of total U.S. production



Total U.S. Exports = 34.5 mmt in 2010/2011 and 25.2 mmt in 2011/2012



**MONTANA**  
STATE UNIVERSITY

EXTENSION

Mountains & Minds

## Where are these exports going?

- **Wheat (50% of total U.S. wheat exports)**
  - Sub-Saharan Africa           4.9 million metric tons
  - Egypt                           3.8
  - Japan                            3.3
  - Mexico                         2.8
  - Philippines                   1.8
  
- **Export competition**
  - Kazakhstan, Australia, Russia, Canada

## “Biggest Losers – Wheat Production” 2010 to 2011

State	Total Production (1,000 bu.)			%
	2010	2011	Difference	
North Dakota	361,550	205,845	-155,705	-43
Kansas	360,000	276,500	-83,500	-23
Texas	127,500	49,400	-78,100	-61
Oklahoma	120,900	70,400	-50,500	-42
Montana	215,360	178,290	-37,070	-17
Colorado	108,234	81,828	-26,406	-24
South Dakota	123,475	104,796	-18,679	-15
Minnesota	88,070	70,456	-17,614	-20

### Global Wheat Market Shares

Country	2010/2011		2011/2012	
	mmt	shares %	mmt	shares %
Australia	26.00	4.0	25.00	3.7
Canada	23.17	3.6	24.20	3.6
China	115.18	17.8	117.00	17.2
EU-27	135.61	20.9	136.33	20.0
India	80.80	12.5	85.93	12.6
FSU-12	80.97	12.5	110.45	16.2
U.S.	60.06	9.3	54.65	8.0
Other	126.37	19.5	127.64	18.7
<b>Total</b>	<b>648.16</b>	<b>100.0</b>	<b>681.20</b>	<b>100.0</b>

Source, WASDE-499, October 12, 2011

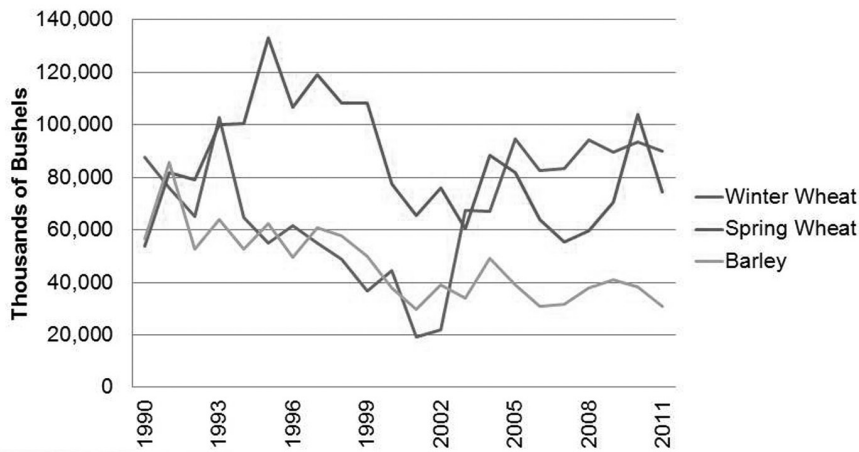


**MONTANA**  
STATE UNIVERSITY

EXTENSION

Mountains & Minds

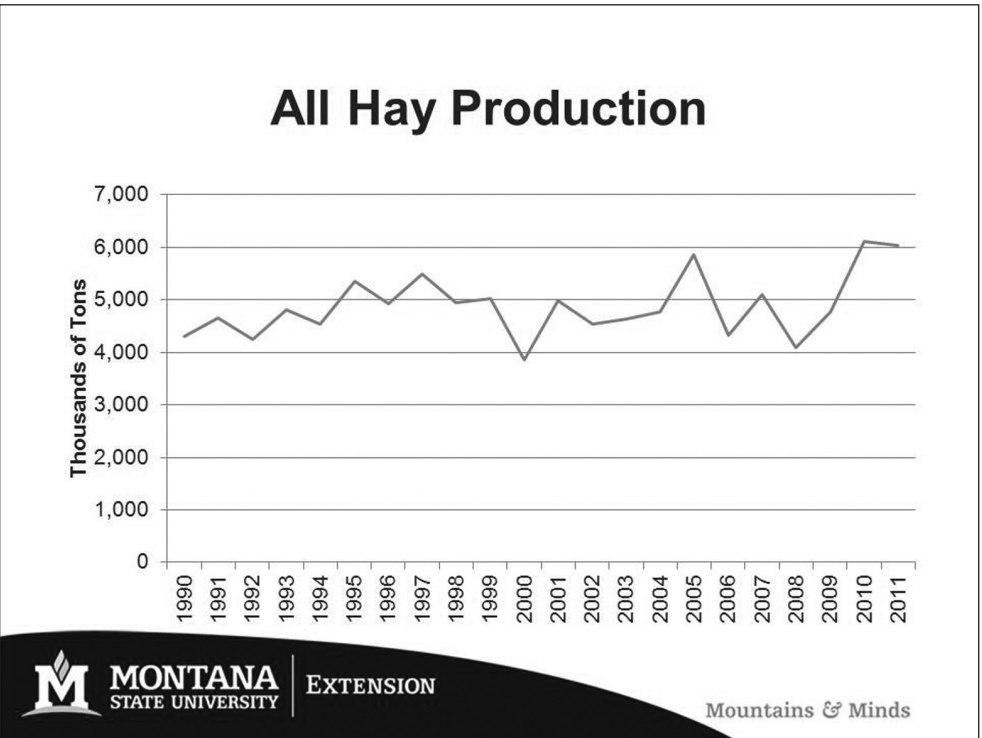
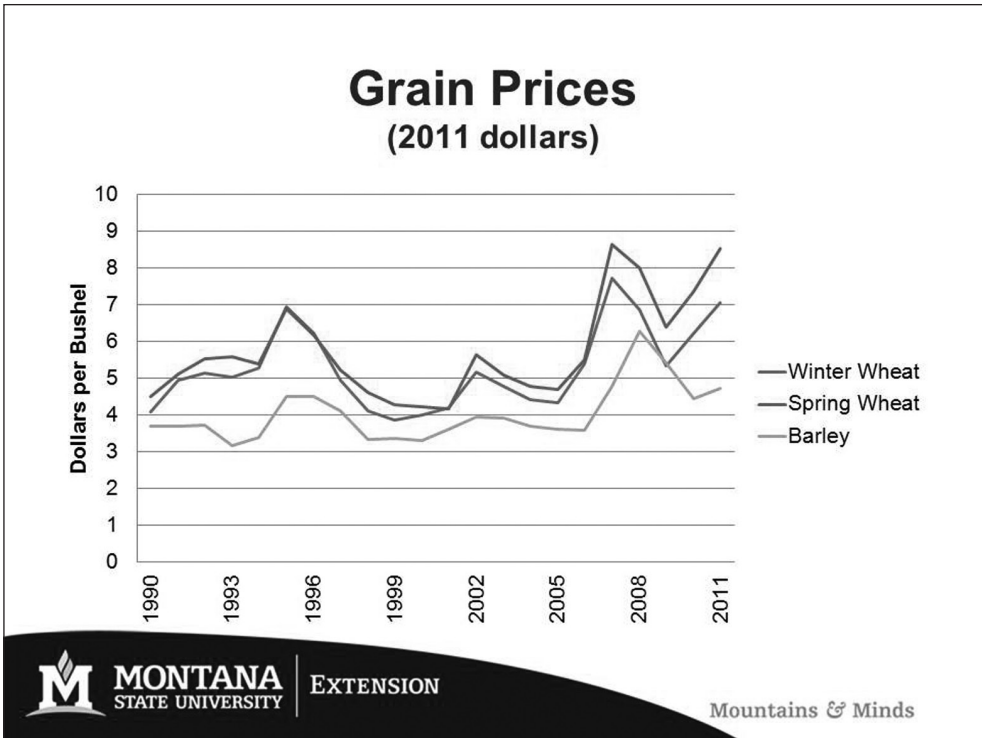
### Grain Production

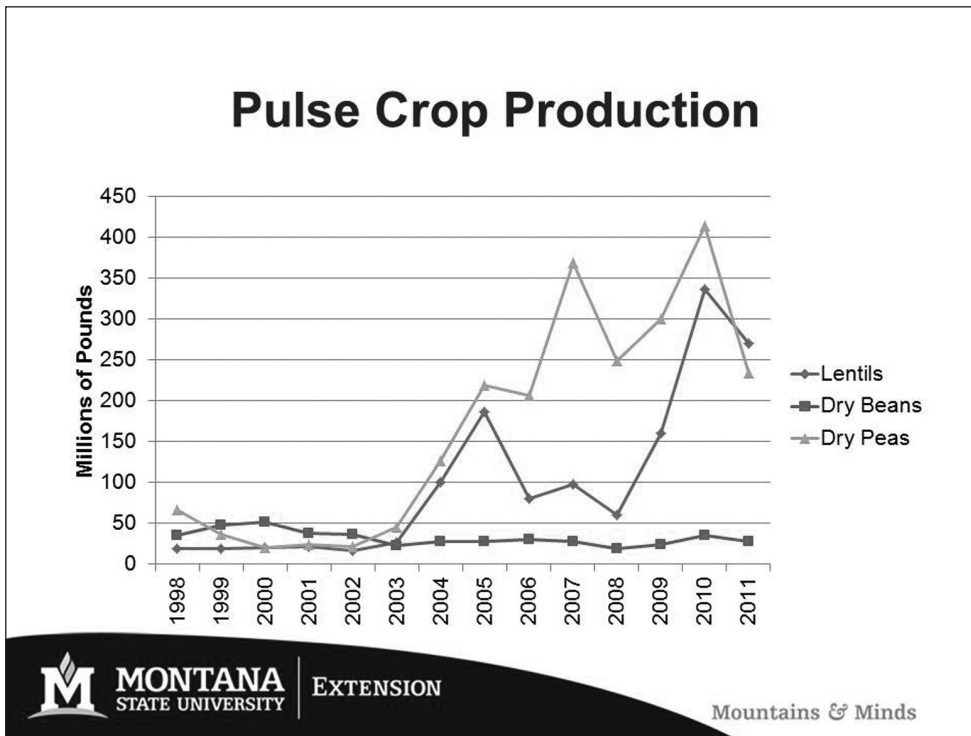
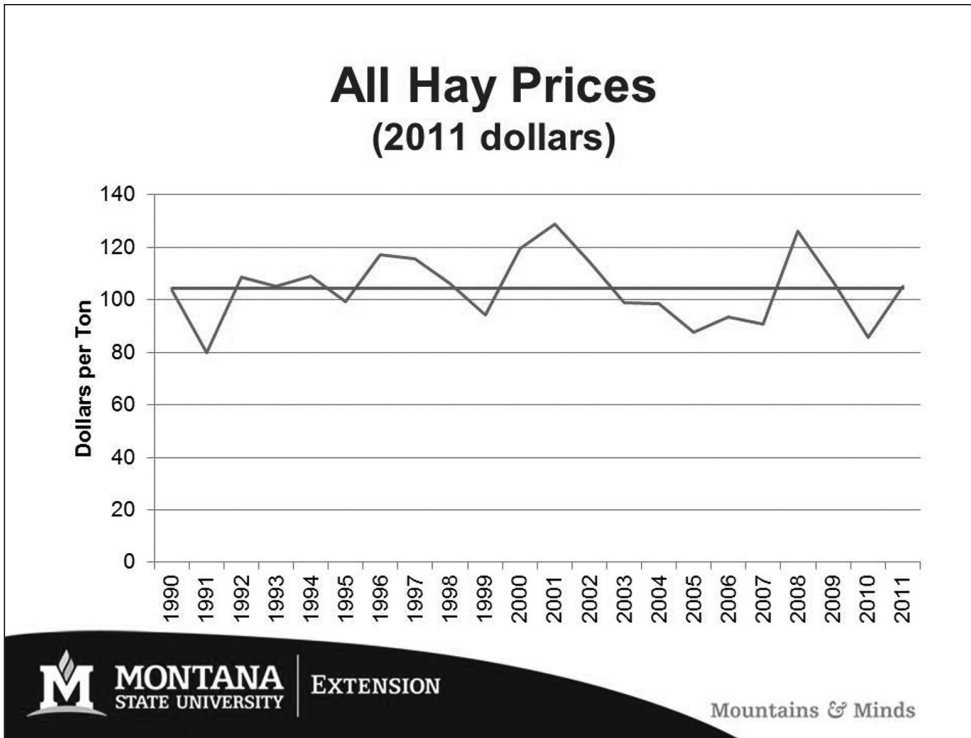


**MONTANA**  
STATE UNIVERSITY

EXTENSION

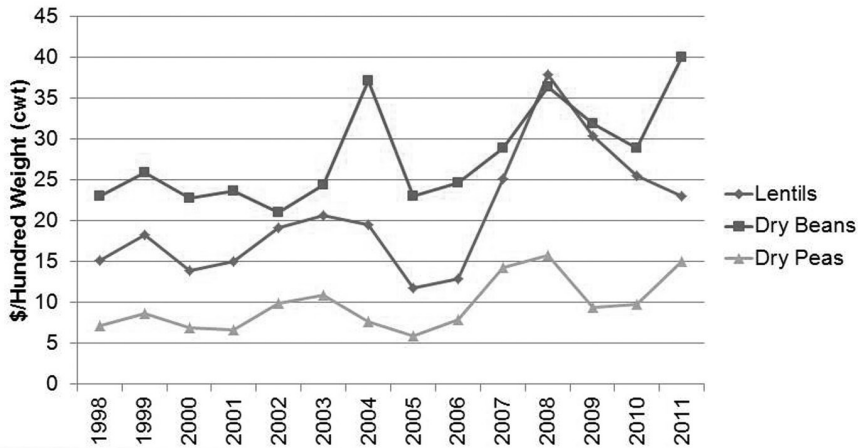
Mountains & Minds







### Pulse Crop Prices



### Share of Pulse Crops Grown in MT

Crop	Montana (1,000 cwt)	U.S. (1,000 cwt)	Montana Share (%)
Dry Beans	359	31,801	1.1
Pinto Beans	275	13,814	2.0
Garbonzo Beans	84	1,939	4.3
Lentils	3,359	8,657	38.8
Dry Peas	4,140	14,221	29.1
Austrian Winter Peas	110	237	46.4

## Futures Prices (not basis adjusted – 12/29/11)

Location	Units	3/12	5/12	7/12	9/12
Minneapolis Grain Exchange					
Hard Red Spring Wheat	\$/bu	8.55	8.31	8.17	7.90
Kansas City Board of Trade					
Winter Wheat	\$/bu	7.09	7.17	7.25	7.37
Chicago Board of Trade					
Corn	\$/bu	6.45	6.53	6.59	6.10

Hay and pulse crops



**MONTANA**  
STATE UNIVERSITY

EXTENSION

Mountains & Minds

## Montana Wheat 2012

- **2012 Winter Wheat Plantings → ???**
- **Influence of corn prices (public policy)**
- **2012 Production/Prices**
  - **MT 2012 All Wheat Price: optimistic**
    - **Early 2012– prices caution (Russia, Ukraine, Kazakhstan)**
    - **Late 2012– two important factors**
      - **Demand – worldwide economic conditions**
      - **Supply – worldwide growing conditions**



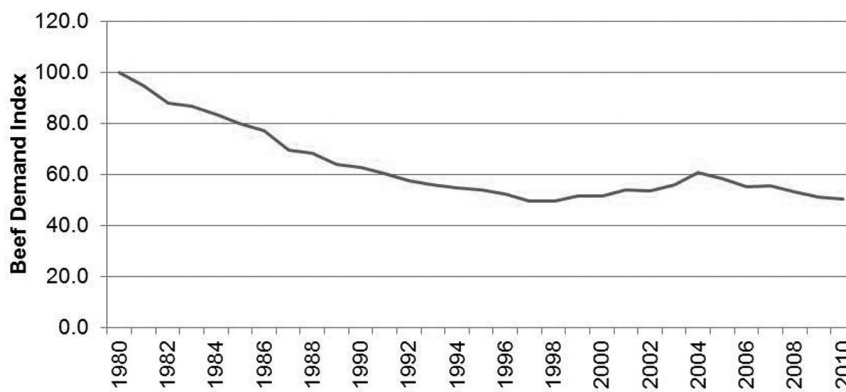
**MONTANA**  
STATE UNIVERSITY

EXTENSION

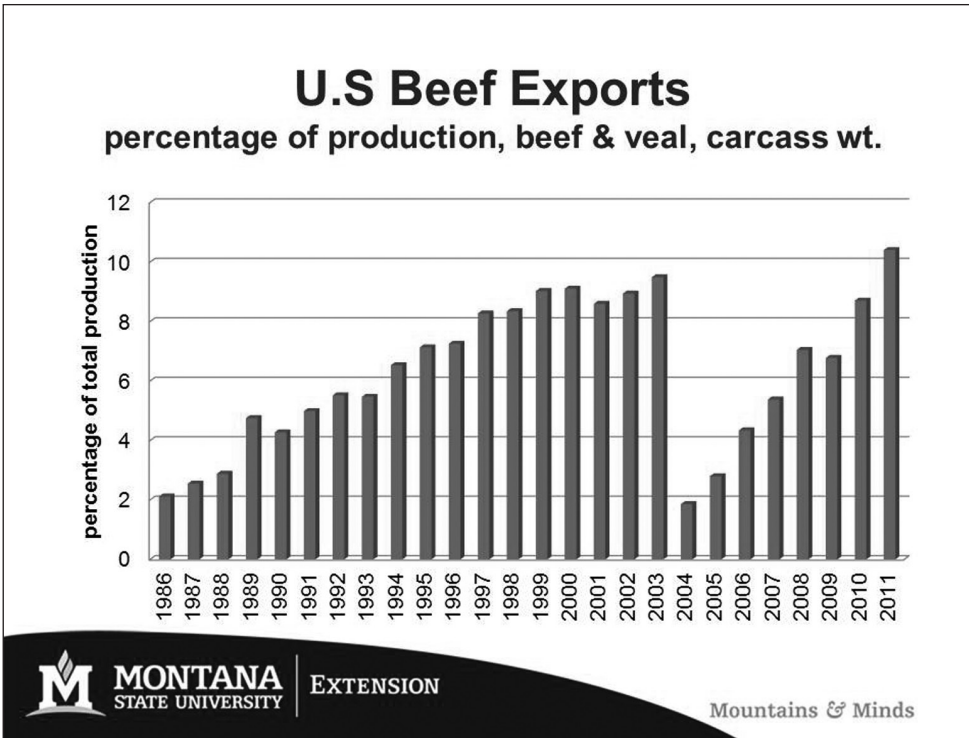
Mountains & Minds

# CATTLE

## Consumer Demand for Beef (annual choice retail beef demand index)



[http://www.agmanager.info/livestock/marketing/graphs/Tonsor/Annual\\_ChoiceBeefDemandIndex\\_Table\\_1990.htm](http://www.agmanager.info/livestock/marketing/graphs/Tonsor/Annual_ChoiceBeefDemandIndex_Table_1990.htm)  
54.1 lbs./capita (USDA)



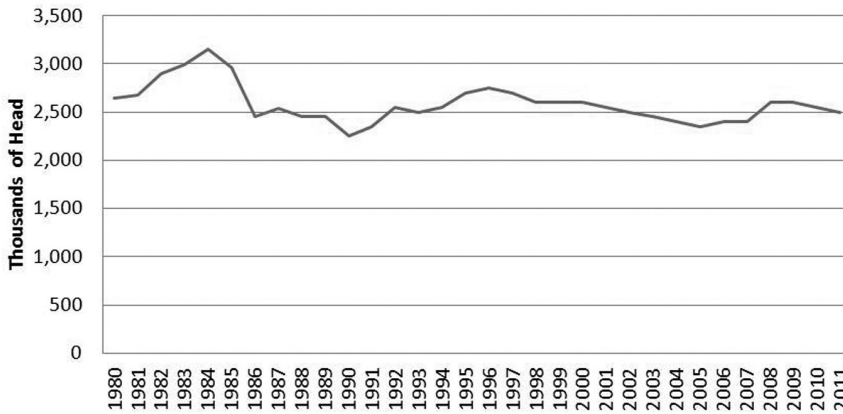
## Exports – who’s buying U.S. beef

- **90% of U.S. beef exports**

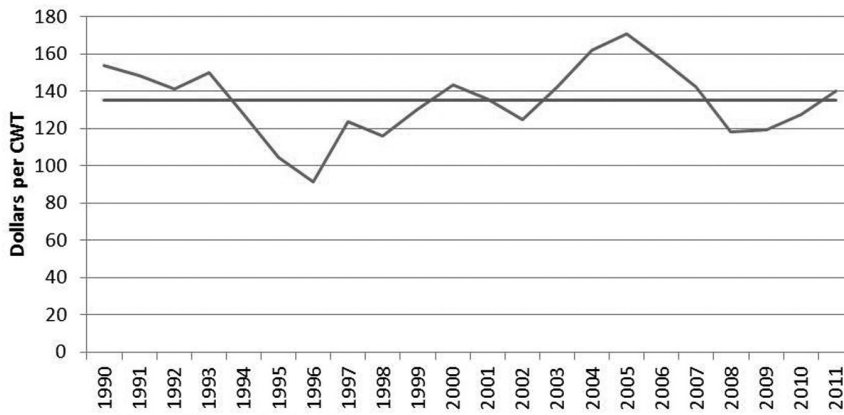
Country	Export Value	Growth '10 – '11
Japan	\$ 662 m.	38%
Mexico	670 m.	---
South Korea	540 m.	50%
Canada	730 m.	39%
Russia	80 m.	72%

USDA Livestock, Dairy and Poultry Outlook, 10/18/2011

### Montana Cattle Herd



### Calf Prices (2011 dollars)



NASS, 190 – 2010, MSU 2011 estimate

## Futures Prices (no basis adjustments – 12/29/11)

Location	04/12	06/12	08/12	12/12
Chicago Mercantile Exchange				
Feeder Cattle, cwt	151	152	153	153
Live Cattle, cwt	127	126	127	130

20% increase from 2009



**MONTANA**  
STATE UNIVERSITY

EXTENSION

Mountains & Minds

## Montana Cattle 2012

- **Strong prices**
  - Global demand (growing emerging economies)
  - Strength of the U.S. dollar
  
- **Opportunity to increase cattle herd**
  - Southern U.S. drought conditions
  - Aging rancher population (interest in expansion)



**MONTANA**  
STATE UNIVERSITY

EXTENSION

Mountains & Minds

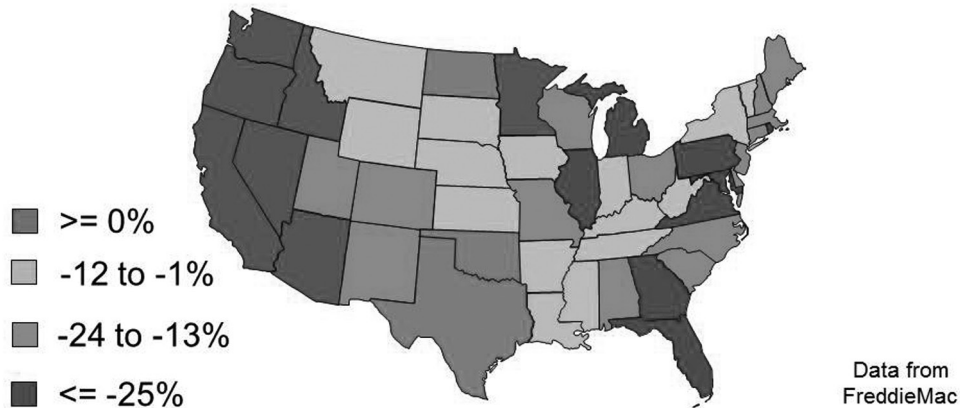


## Montana's Housing Market

### National Conditions



## Change in Home Prices 2006 – 2011



## 2011 Statistics



**Existing  
Homes**

**4.26 Million**

**\$164,500**

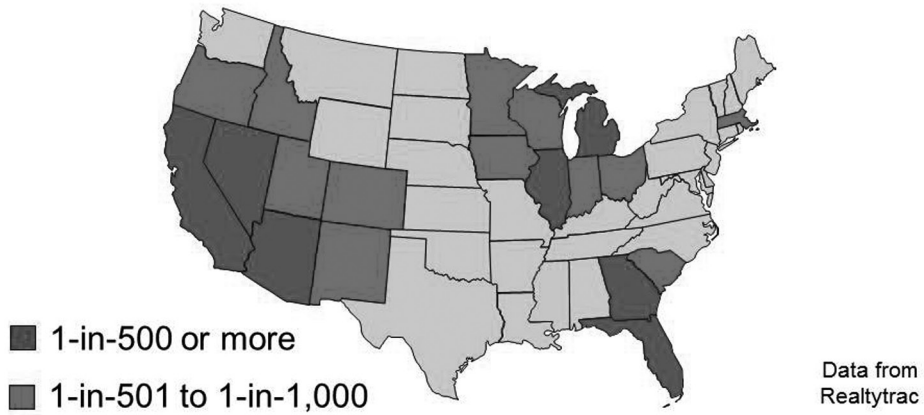
**New  
Construction**

**607,000**

**\$212,000**



## Foreclosure Rates Dec 2011



## Shadow Inventory

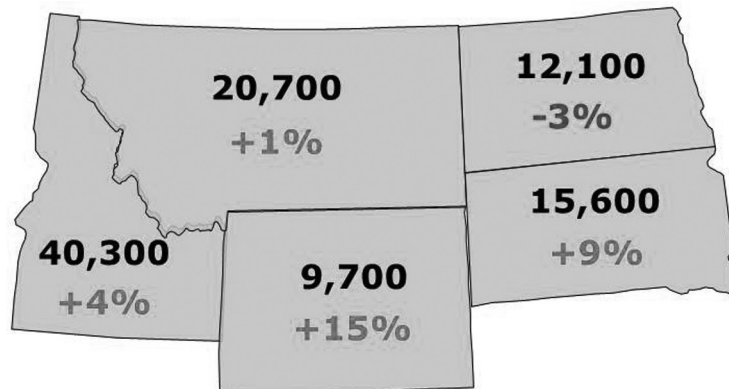


14 Million Units

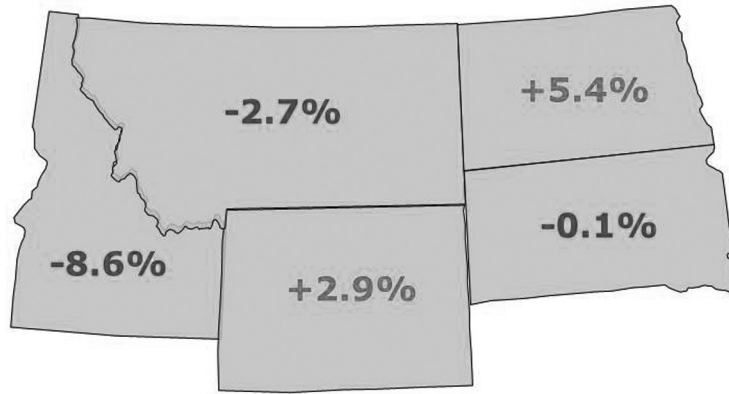
## Regional Conditions



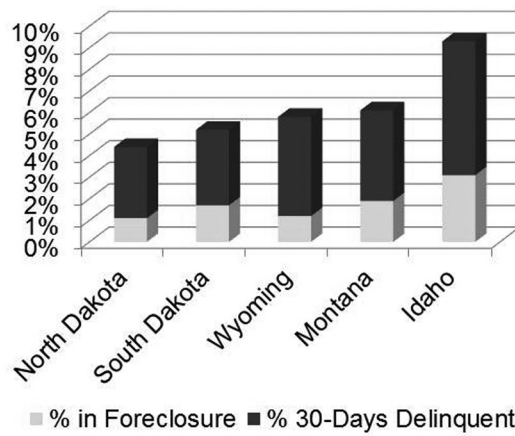
## Number of Sales in 2011



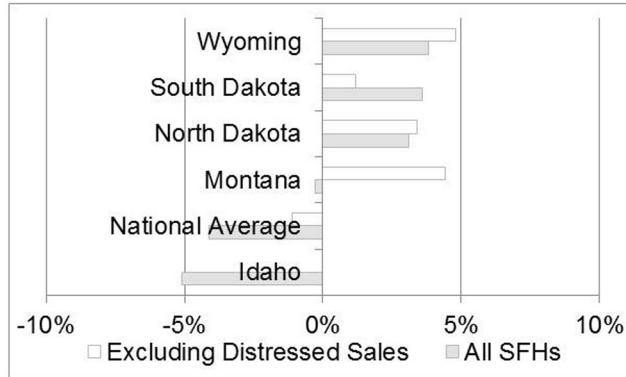
### 12-Month Price Change



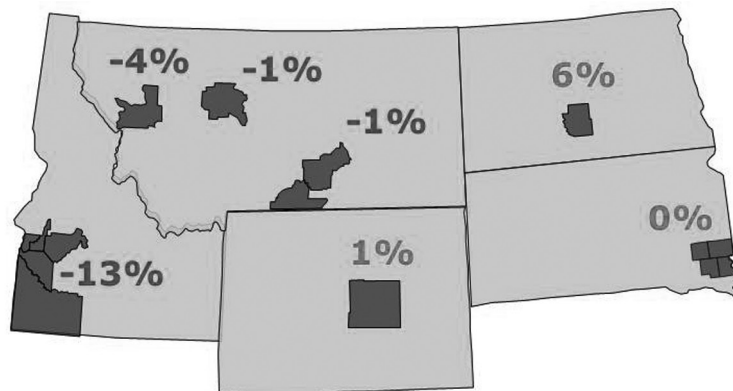
### Foreclosures and Delinquencies



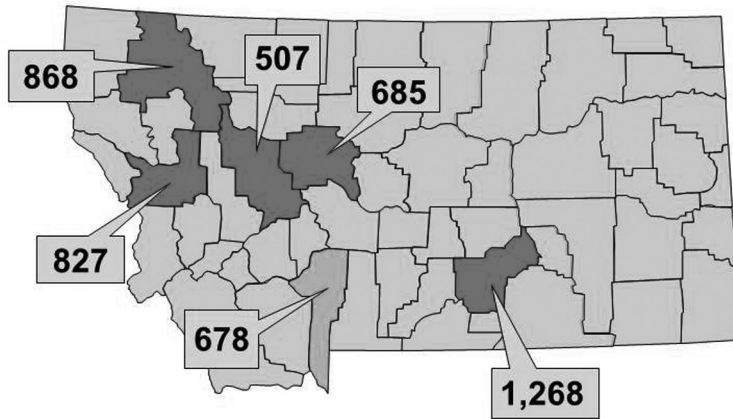
### Distressed Sales Reduce Price Growth



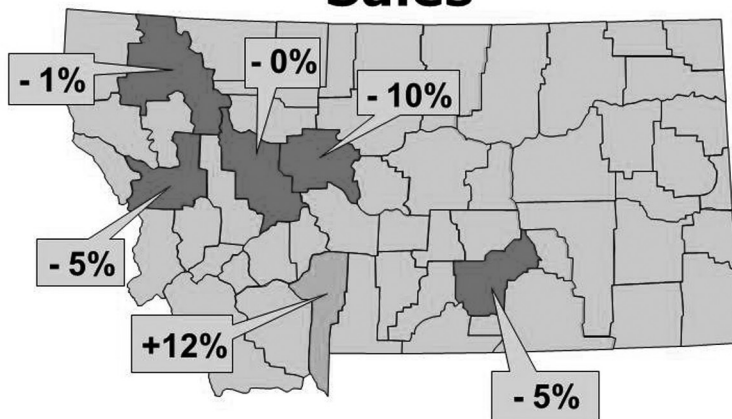
### Metro Area Prices



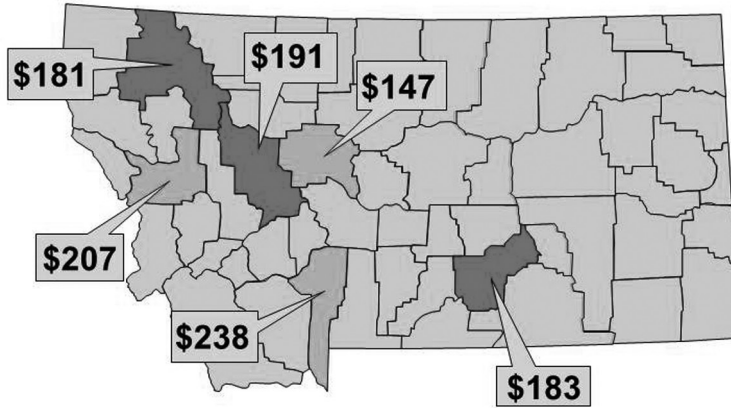
### Number of Sales



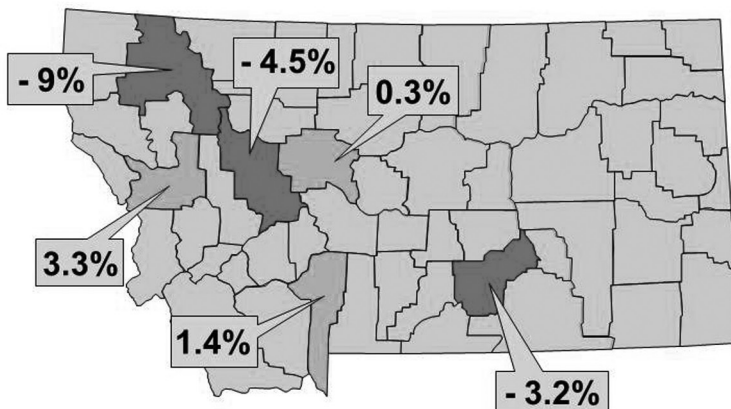
### % Change in Number of Sales

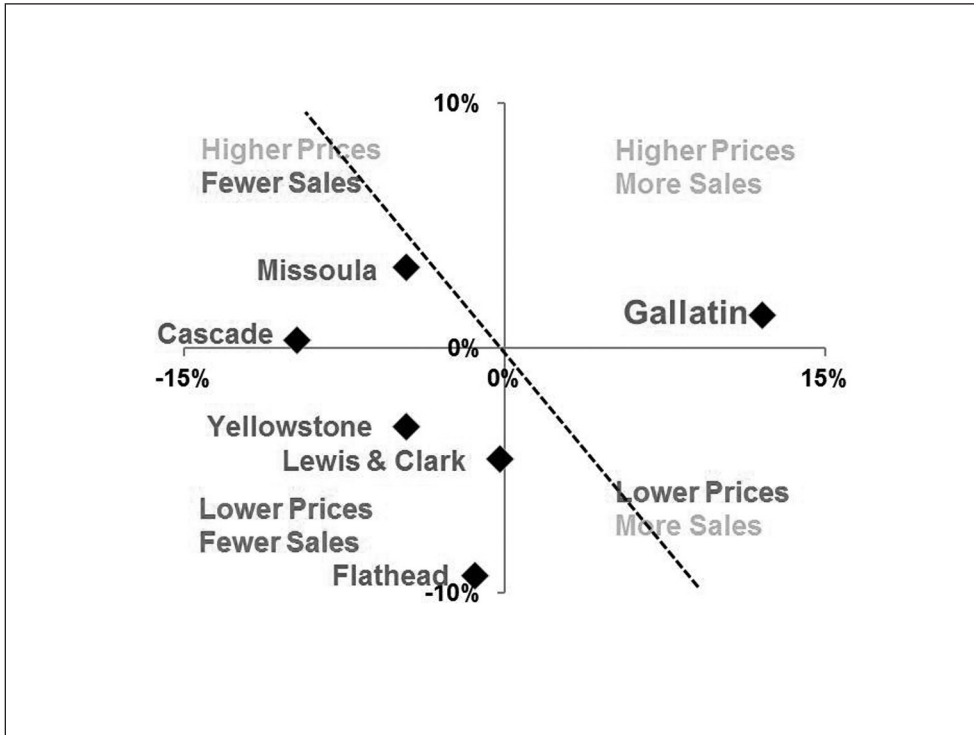


### Median Prices (in \$ 1,000s)



### Median Prices (in \$ 1,000s)





## MT Housing Starts



### From Peak

- Silver Bow -25%
- Yellowstone, L&C -50%
- Missoula, Flathead -60%
- Many Other Counties -80%

## 2012 Conditions



- **Incomes Flat**
- **Limited Wealth**
- **Abundant Debt**
- **Shadow Inventories**
- **Consumer Confidence**

## 2012 Forecast



### Overall

**Lower Prices**

**Flat Sales**

**Higher Rents**

**More Construction**



## Montana's Rental Markets



### Apartment Rent

	1 Bedroom	2 Bedroom	3+ Bedroom
<b>Butte</b>	\$ 437	\$ 556	\$ 650
<b>Billings</b>	\$ 448	\$ 638	\$ 837
<b>Great Falls</b>	\$ 454	\$ 654	\$ 875
<b>Helena</b>	\$ 488	\$ 699	\$ 1,036
<b>Bozeman</b>	\$ 489	\$ 641	\$ 1,123
<b>Kalispell</b>	\$ 501	\$ 626	\$ 817
<b>Missoula</b>	\$ 626	\$ 694	\$ 747

## House Rent

	1 Bedroom	2 Bedroom	3+ Bedroom
<b>Butte</b>	\$ 530	\$ 680	\$ 868
<b>Billings</b>	\$ 604	\$ 880	\$ 1,313
<b>Great Falls</b>	\$ 450	\$ 875	\$ 1,250
<b>Helena</b>	\$ 510	\$ 873	\$ 1,030
<b>Bozeman</b>		\$ 1,042	\$ 1,377
<b>Kalispell</b>		\$ 838	\$ 1,002
<b>Missoula</b>		\$ 1,028	\$ 1,419

## Premium for Renting a House

	1 Bedroom	2 Bedroom	3+ Bedroom
<b>Butte</b>	+21%	+22%	+34%
<b>Billings</b>	+35%	+38%	+57%
<b>Great Falls</b>	-1%	+34%	+43%
<b>Helena</b>	+5%	+25%	-1%
<b>Bozeman</b>		+63%	+23%
<b>Kalispell</b>		+34%	+23%
<b>Missoula</b>		+48%	+90%

**Premium: 2 BR House vs. 3 BR Apt.**

	1 BR House vs. 2 BR Apt	2 BR House vs. 3 BR Apt
<b>Butte</b>	-5%	+5%
<b>Billings</b>	-5%	+5%
<b>Great Falls</b>	-31%	0%
<b>Helena</b>	-27%	-16%
<b>Bozeman</b>		-7%
<b>Kalispell</b>		+3%
<b>Missoula</b>		+38%

# Thank You

Scott Rickard Ph.D.  
srickard@msubillings.edu

# Montana Manufacturing: 2012 Outlook

BUREAU OF  
BUSINESS  
AND ECONOMIC  
RESEARCH

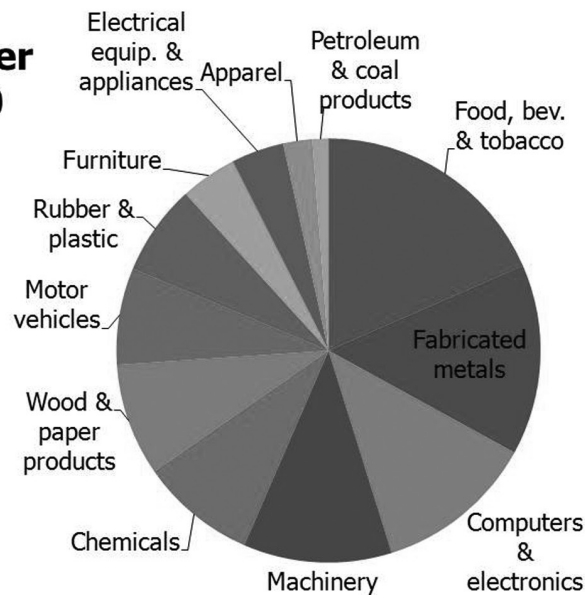
Todd A. Morgan, CF

## U.S. Manufacturing

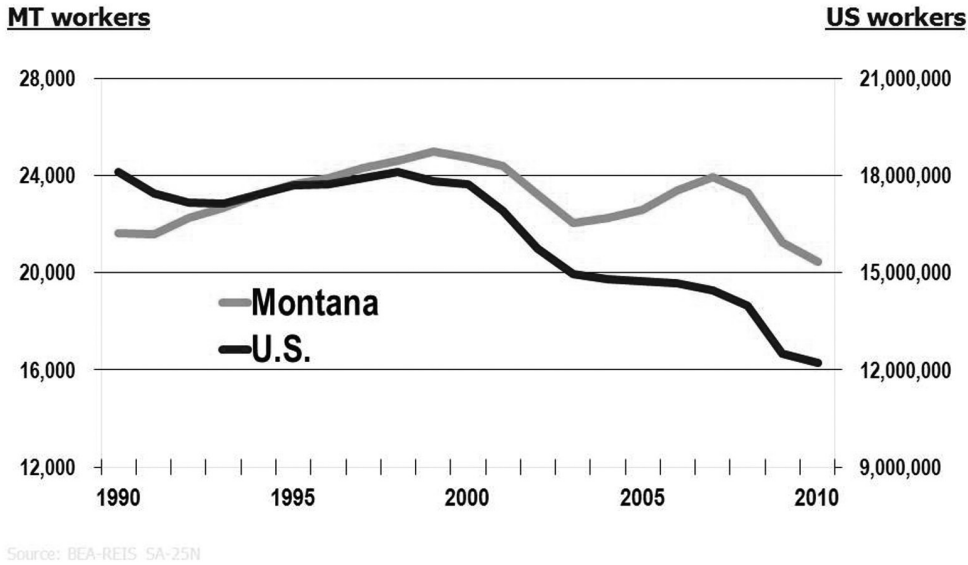
➤ **5.5 million fewer jobs than in 2000**

➤ **Annual worker income down by \$49 billion**

➤ **Gross output down by \$296 billion**



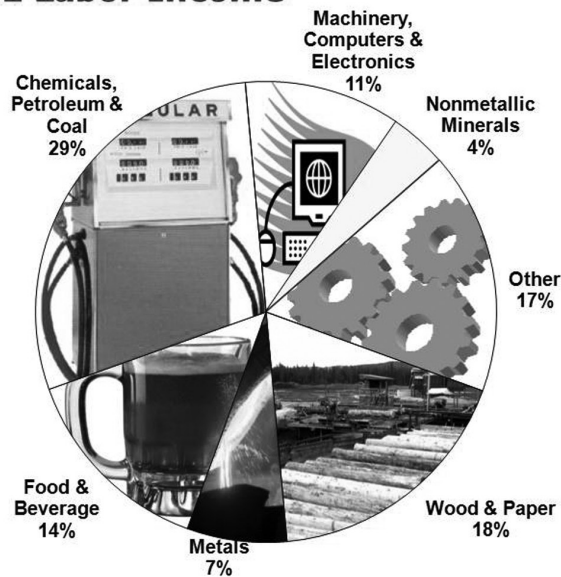
## Montana & U.S. Manufacturing Employment 1990-2010



## Montana Manufacturing 2011 Labor Income

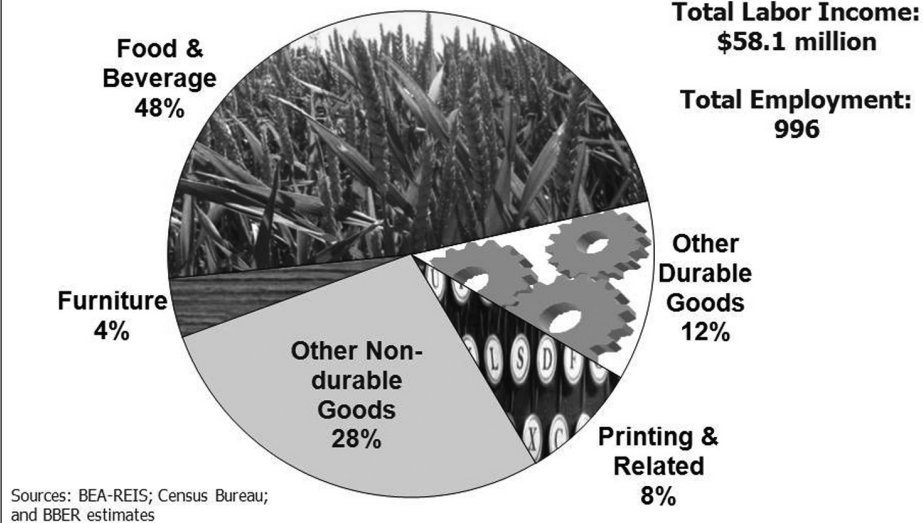
**Total Employment:**  
~19,938

**Total Labor Income:**  
\$1.08 billion



Sources: BEA-REIS; Census Bureau; and BBER estimates

## Cascade County Manufacturing 2009 Labor Income



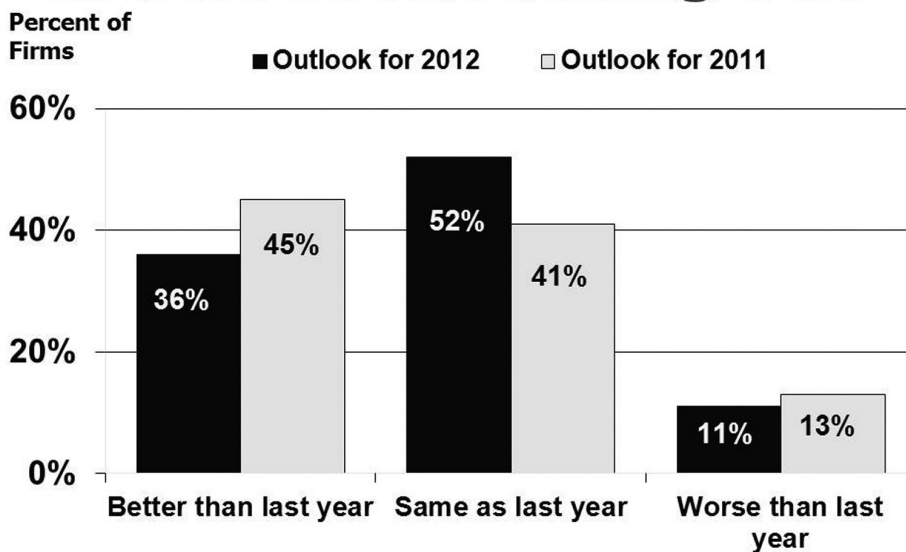
## 2011-2012 Montana Manufacturers Survey

- annual survey
- conducted in December
- open-ended & multi-choice questions
- current & coming year
- 211 firms participated
- response rate >88%

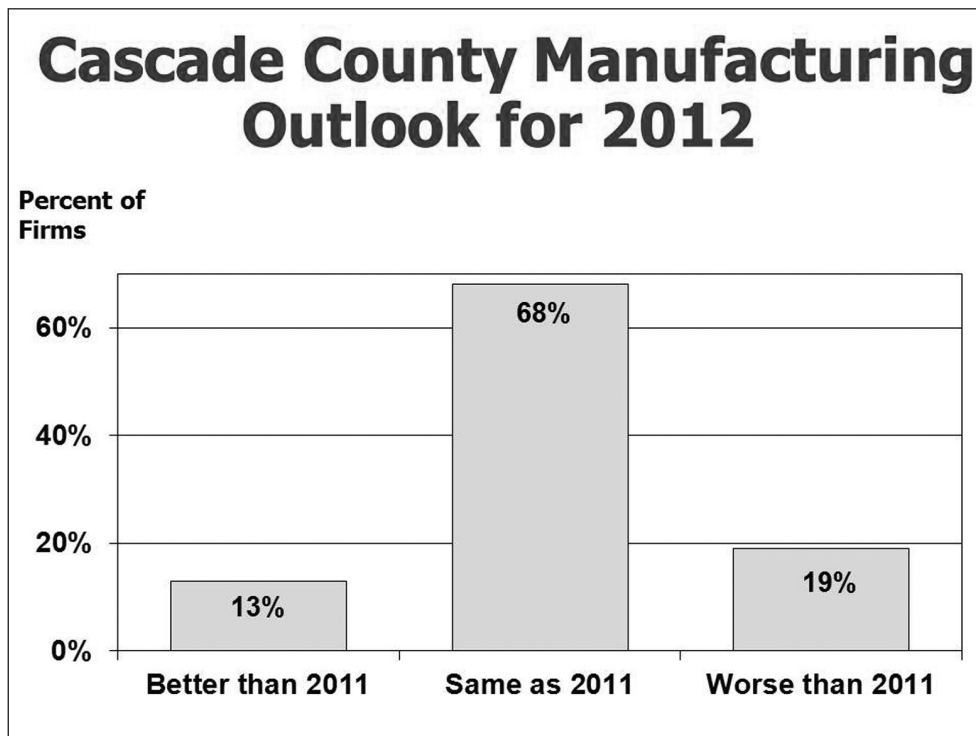
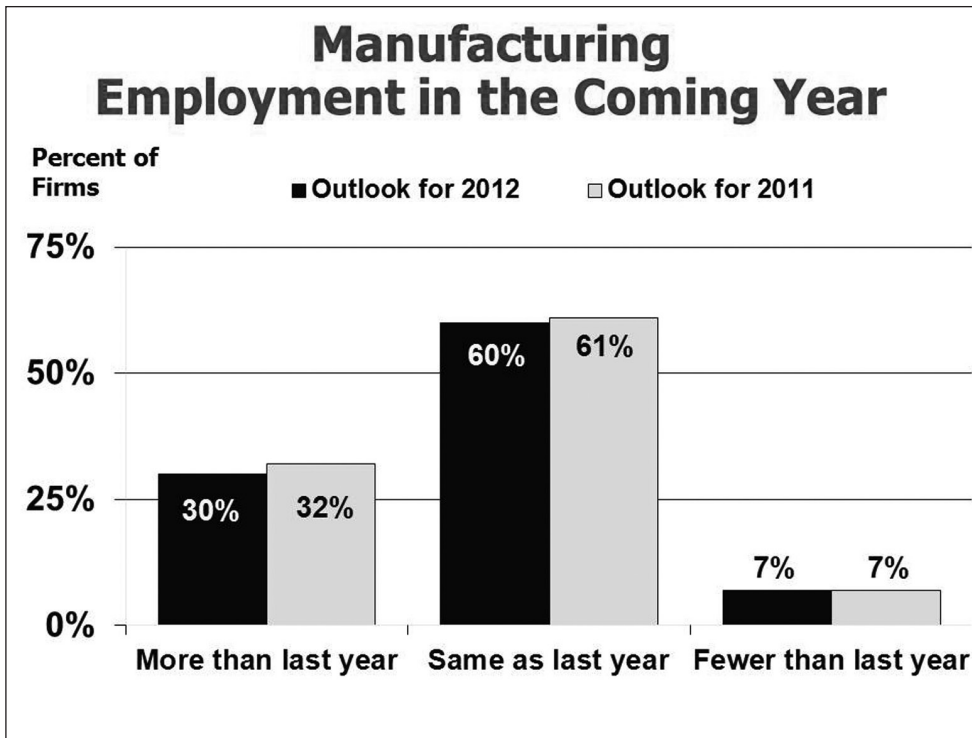
## Montana Manufacturing 2011 Recap

- **Better than 2010 for many firms**
- **Employment down at one-quarter of firms**
- **Many firms reported increased production, sales, and profits**
- **Few firms reported curtailments**
- **44% of firms did make major capital expenditures**

## Montana Manufacturing Outlook for the Coming Year



Notes



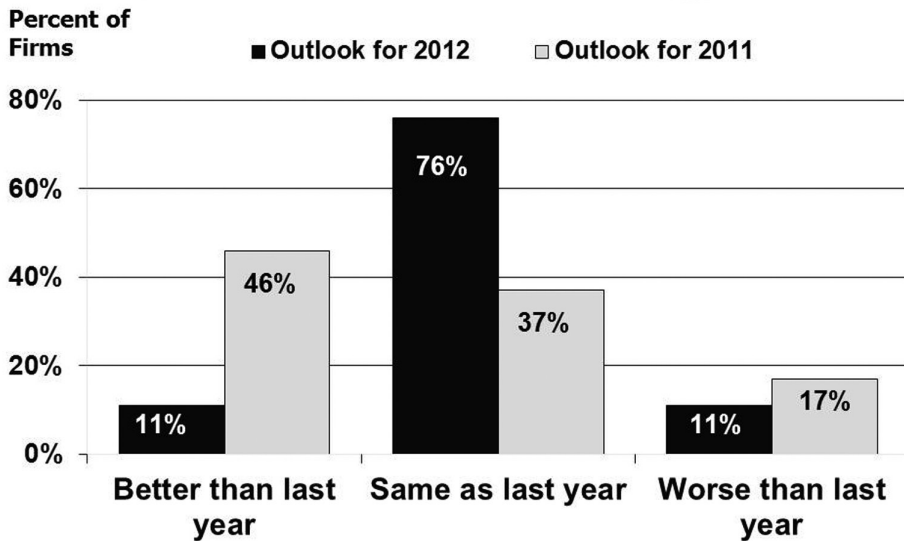


## **Montana Manufacturing Forecast for 2012**

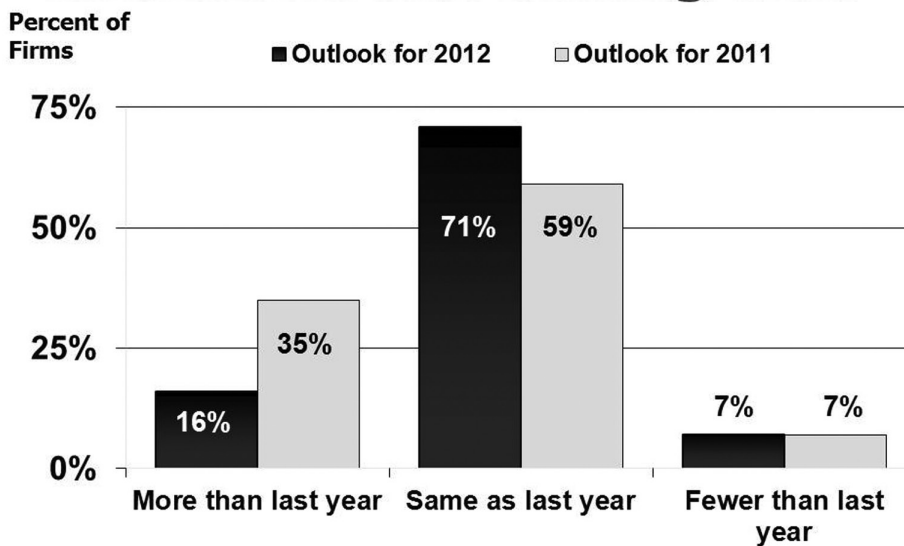
- **Little change is expected**
- **Recovery dependent on broader US economy & international factors**
- **Health insurance costs & workers comp remain the greatest concerns**
- **Half of MT manufacturers expect their energy costs to increase**

Notes

## Montana Forest Products Outlook for the Coming Year



## Forest Products Employment Outlook for the Coming Year



## **Forest Industry Conditions**

- **Slow recovery in US housing**
- **Chinese lumber & log demand could impact Montana**
- **Wood energy markets are slowly emerging**
- **Retaining industry is important to forest landowners**
- **The industry is changing**

## **Montana Forest Products Industry Forecast**

- **2012 markets are expected to be somewhat better than 2011.**
- **Timber harvest & lumber production may increase slightly.**
- **Employment is expected to stay low.**
- **Forests will become more expensive to manage.**

## Montana Chamber of Commerce Calendar of Events

**Safety Training Workshops**  
[www.MTSafetyChoices.com](http://www.MTSafetyChoices.com)

**Montana Candidate Schools**  
February 7-10, 2012  
Great Falls, Missoula, Bozeman, Billings

**Montana Chamber Summer Meeting**  
June 20-21, 2012  
Fort Benton

**2012 Governors' Cup Golf Tournament**  
August 2-4, 2012  
Flathead Valley  
[www.MontanaGovernorsCup2012.com](http://www.MontanaGovernorsCup2012.com)

**Montana Goes to China Tour,**  
October 8-17, 2012  
[www.MontanaGoesToChina.com](http://www.MontanaGoesToChina.com)

**Montana Chamber Annual Meeting**  
October 10-11, 2012  
Missoula



[www.MTSafetyChoices.com](http://www.MTSafetyChoices.com)



[www.MontanaGoesToChina.com](http://www.MontanaGoesToChina.com)



[www.ChamberChoices.com](http://www.ChamberChoices.com)

Check out  
**[www.MontanaChamber.com](http://www.MontanaChamber.com)**  
for the latest Montana business news and resources



# OUTLOOK 2012 PRESENTATIONS

Published with the support of the Montana Chamber of Commerce

## Midyear Update to the Economic Outlook

### **Kalispell**

August 2, 2012 (Thursday)  
Noon – 1:30 p.m.  
Kalispell Hilton Garden Inn

### **Billings**

August 7, 2012 (Tuesday)  
7:00 – 8:30 a.m.  
Billings Crowne Plaza

### **Bozeman**

August 7, 2012 (Tuesday)  
Noon – 1:30 p.m.  
Bozeman GranTree

### **Great Falls**

August 8, 2012 (Wednesday)  
7:00 – 8:30 a.m.  
Great Falls Hilton Garden Inn

### **Helena**

August 8, 2012 (Wednesday)  
Noon – 1:30 p.m.  
Helena Red Lion Colonial

### **Butte**

August 9, 2012 (Thursday)  
7:00 – 8:30 a.m.  
Butte Quality Inn & Suites  
(War Bonnet)

### **Missoula**

August 9, 2012 (Thursday)  
Noon – 1:30 p.m.  
Missoula Hilton Garden Inn

Check out

**[www.MontanaChamber.com](http://www.MontanaChamber.com)**

for the latest Montana business news and resources



**Montana Chamber of Commerce  
Treasure State Investors**

