

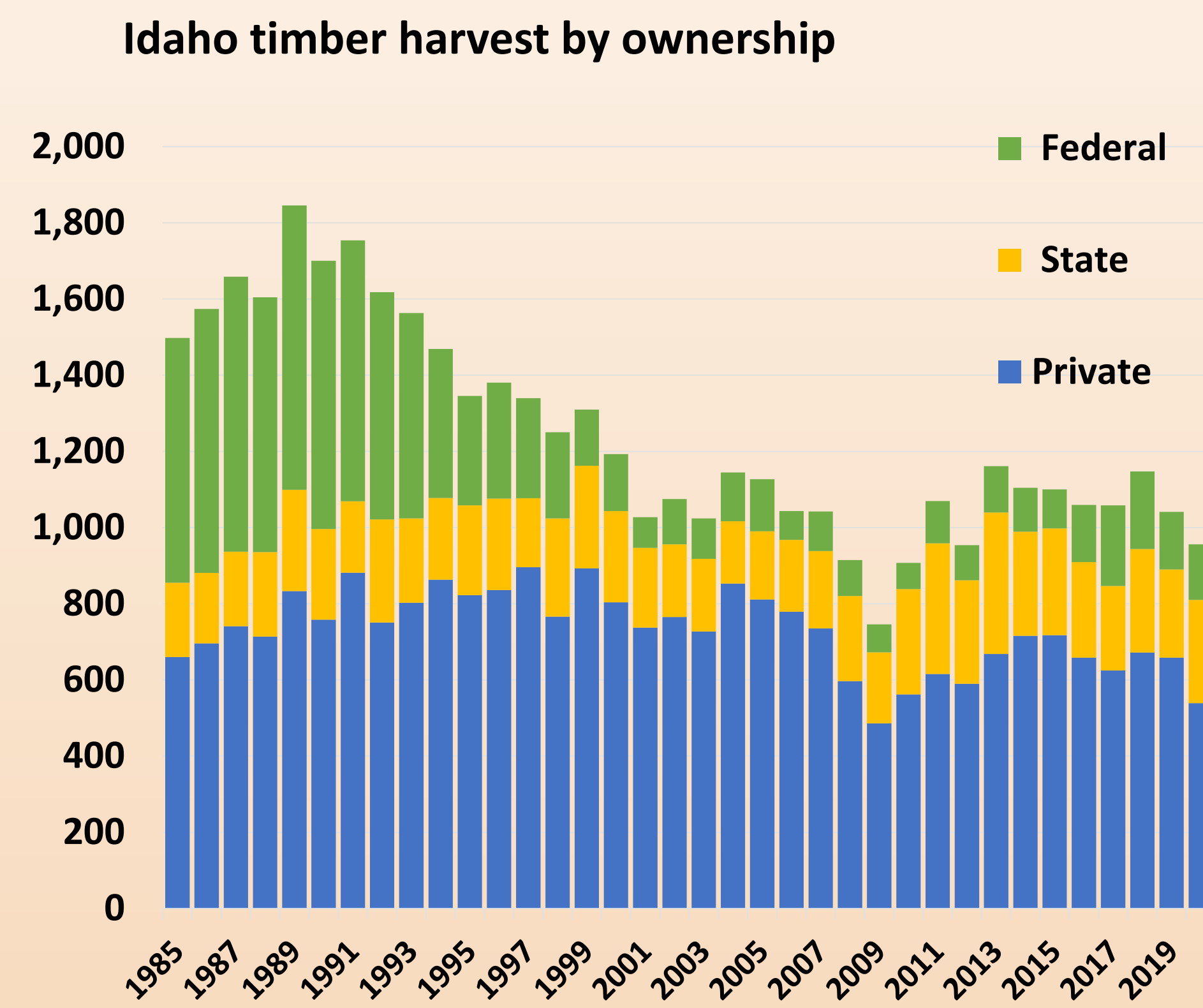
Timber Basket of the Interior West: Idaho's Forest Products Industry and Timber Harvest, 2019

Eric A. Simmons, Samuel G. Scott, Todd A. Morgan, and John D. Shaw Society of American Foresters, Baltimore Maryland September 20-23, 2022

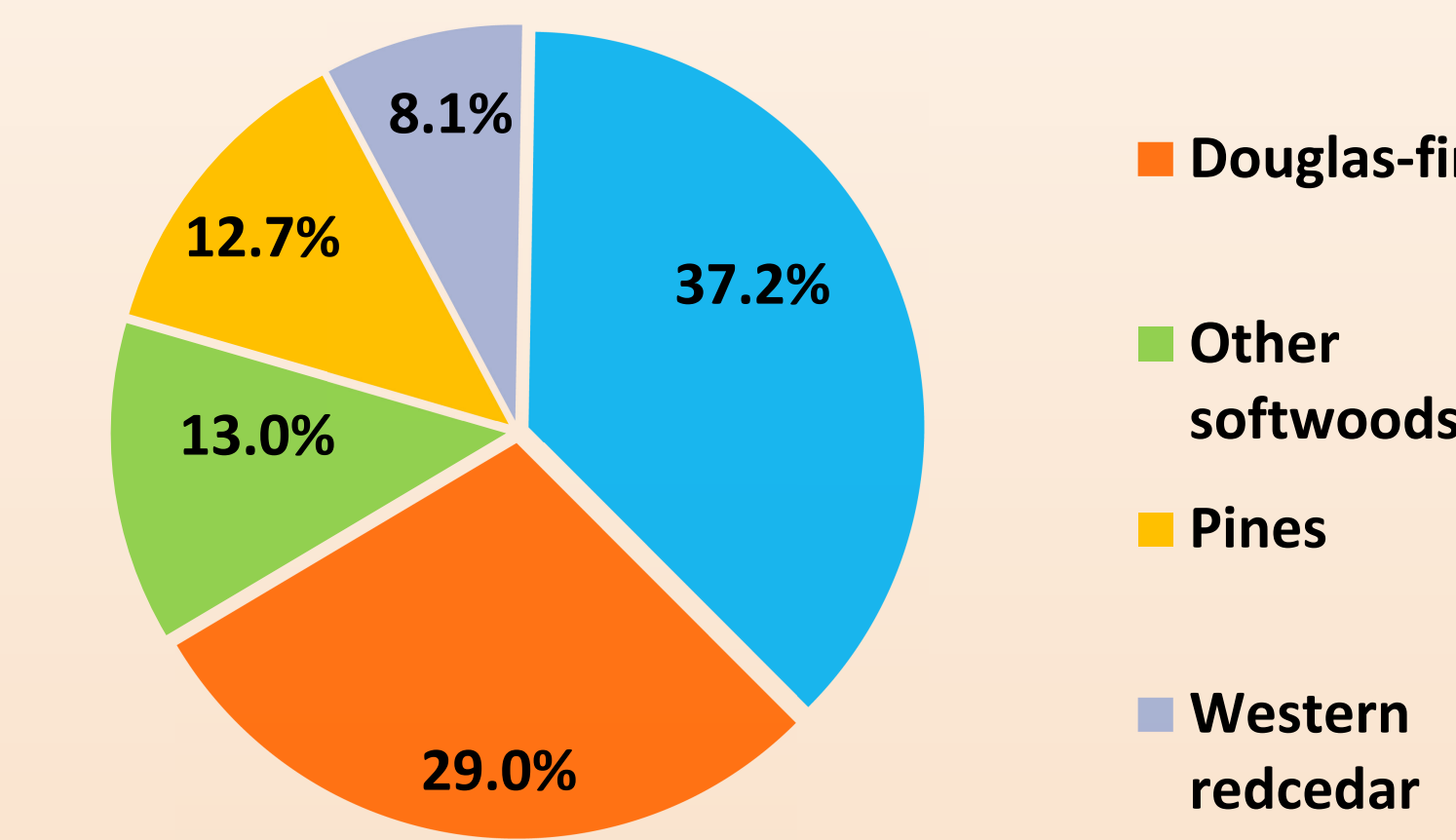
Timber harvest facts



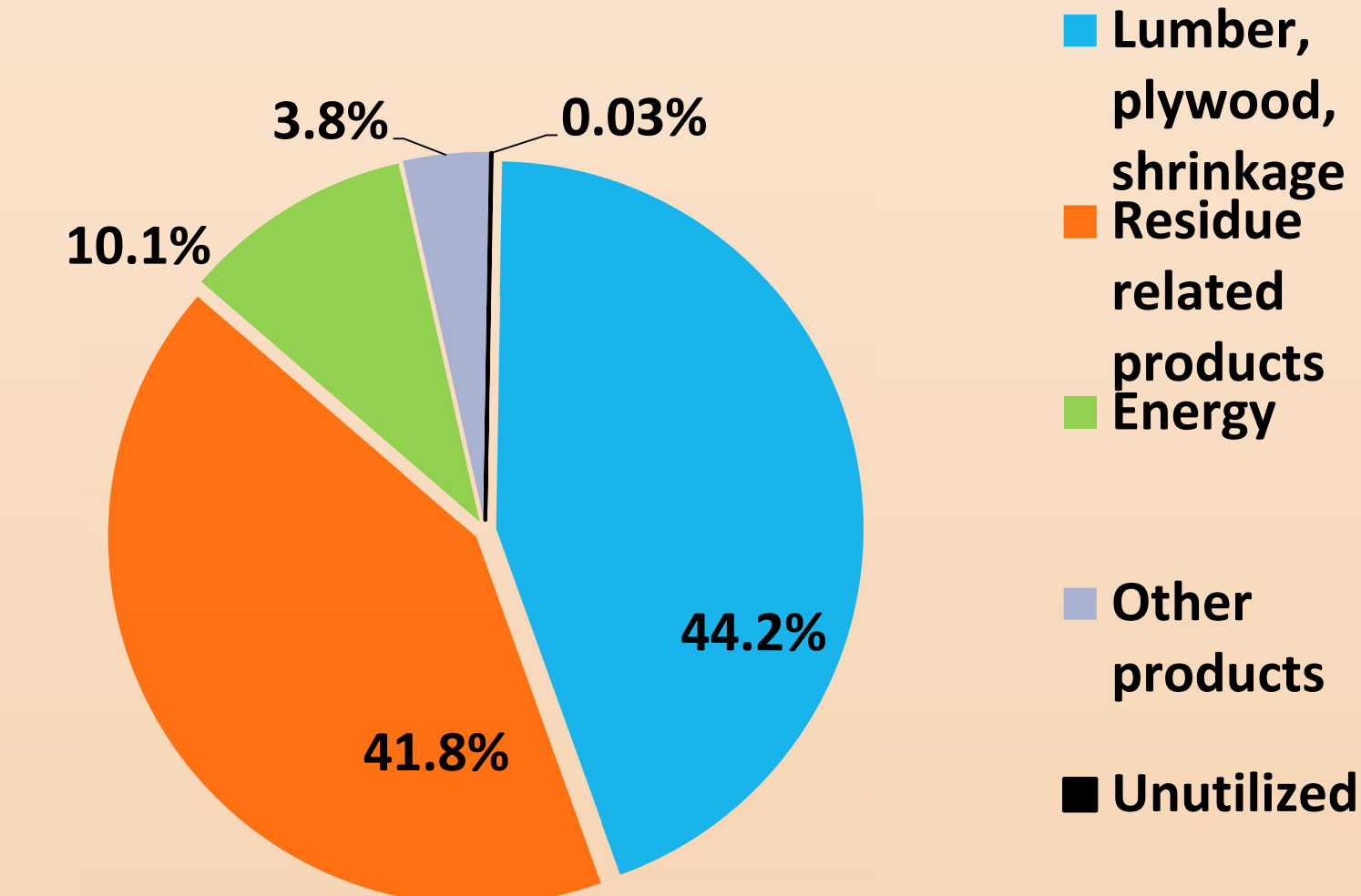
Thousand board feet Scribner



Harvest by species



Final disposition of wood without bark



Northwest states' timber harvests by comparison, 2019.

State	MMBF Scribner
Idaho	1,041
Montana	387
Oregon	3,541
Washington	2,547

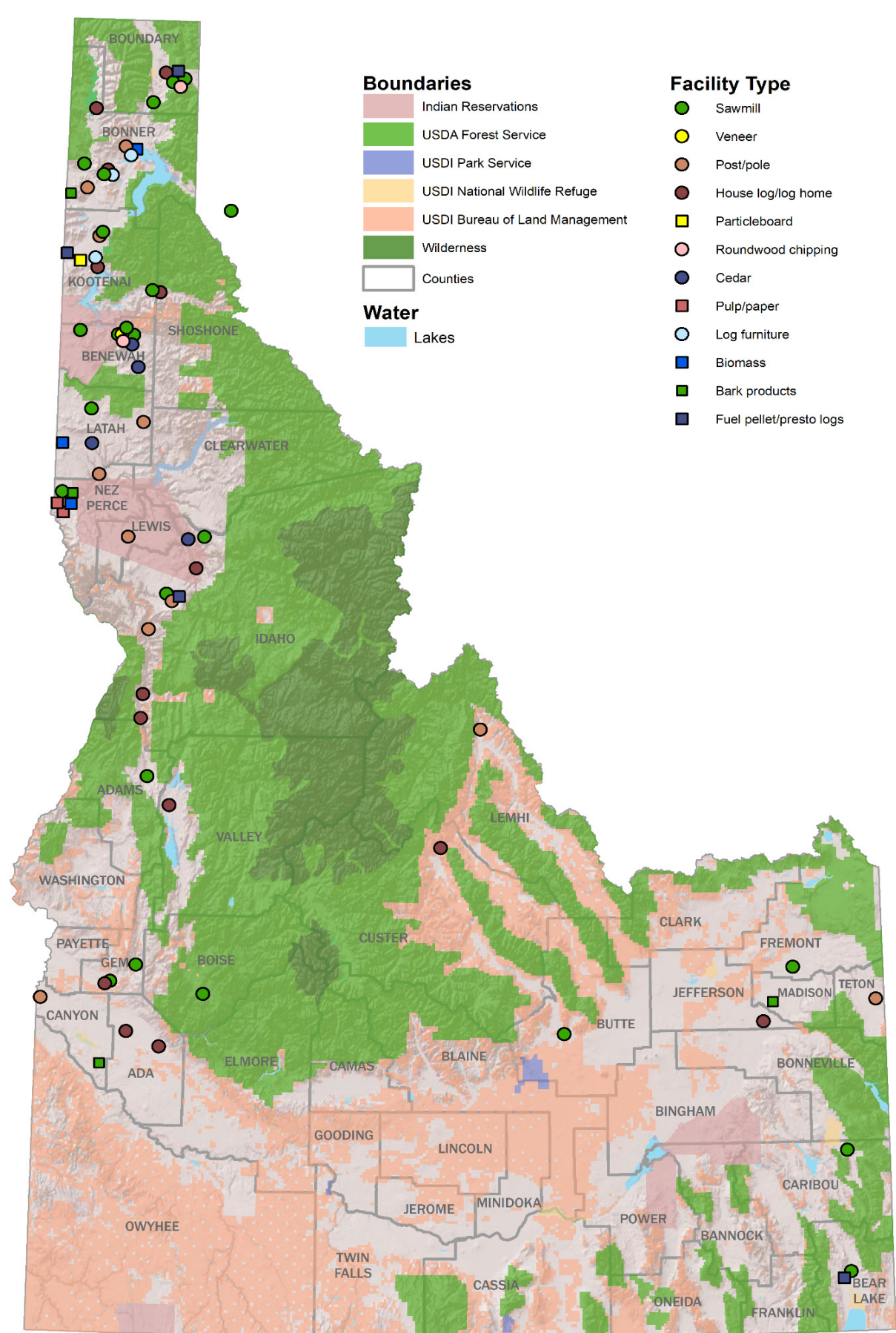


- True firs, Douglas-fir, western redcedar and ponderosa pine accounted for 81 percent of Idaho's 2019 timber harvest.
- Saw and veneer logs accounted for 91 percent of the timber products in the 2019 harvest.
- More than 94 percent of the state's timber harvest was processed in-state.
- Nearly 83 percent of the wood fiber from the timber harvest was delivered as logs to sawmills in Idaho.
- Lumber products including shrinkage allowance accounted for 44 percent of the wood fiber from harvested trees.
- Residue products facilities received just 13 percent of the wood fiber delivered as logs but combined with mill residuals, finished products accounted for nearly 42 percent of the wood fiber from the 2019 timber harvest.
- Less than 0.05 percent of the wood fiber from the harvest went unused in 2019.

Timber harvests from Federal timberlands in Idaho declined dramatically after 1990. Idaho's total timber harvest in 2019 was 1,041 million board feet (MMBF) Scribner.

Residue related products include pulp, paper, board products, landscape, mulch and animal bedding. Energy uses include residuals burned on site, hog fuel, wood pellets and energy logs. Other products include posts, poles, cedar products, house logs/log homes and log furniture.

Industry facts



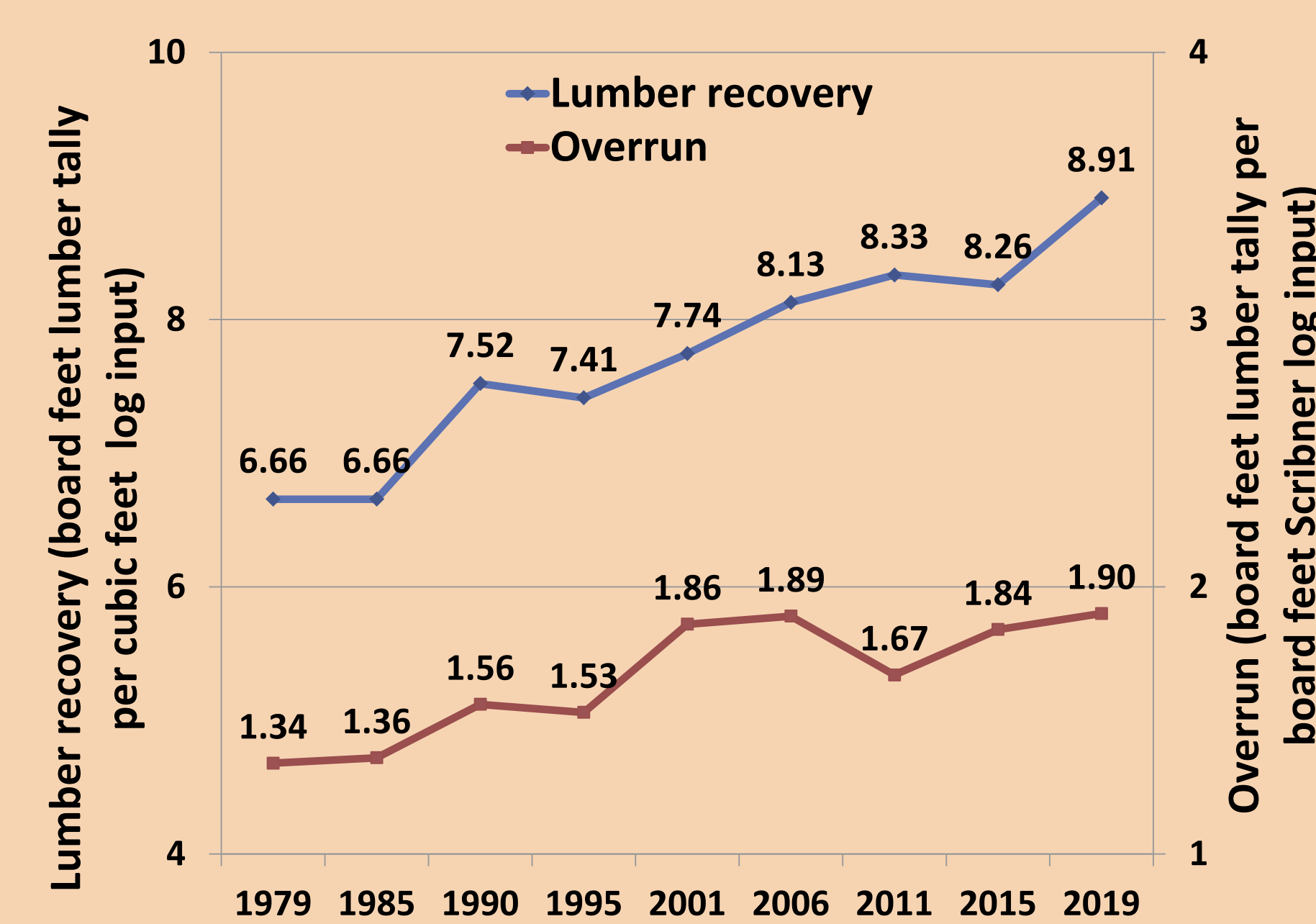
Lumber overrun and recovery factors demonstrate the efficiency of sawmills to use the timber resource.

- In 2019 Idaho sawmills recovered an average of 1.90 board feet lumber tally per board foot Scribner of input.
- Idaho's 24 active sawmills produced 1.8 billion board feet of lumber during 2019.

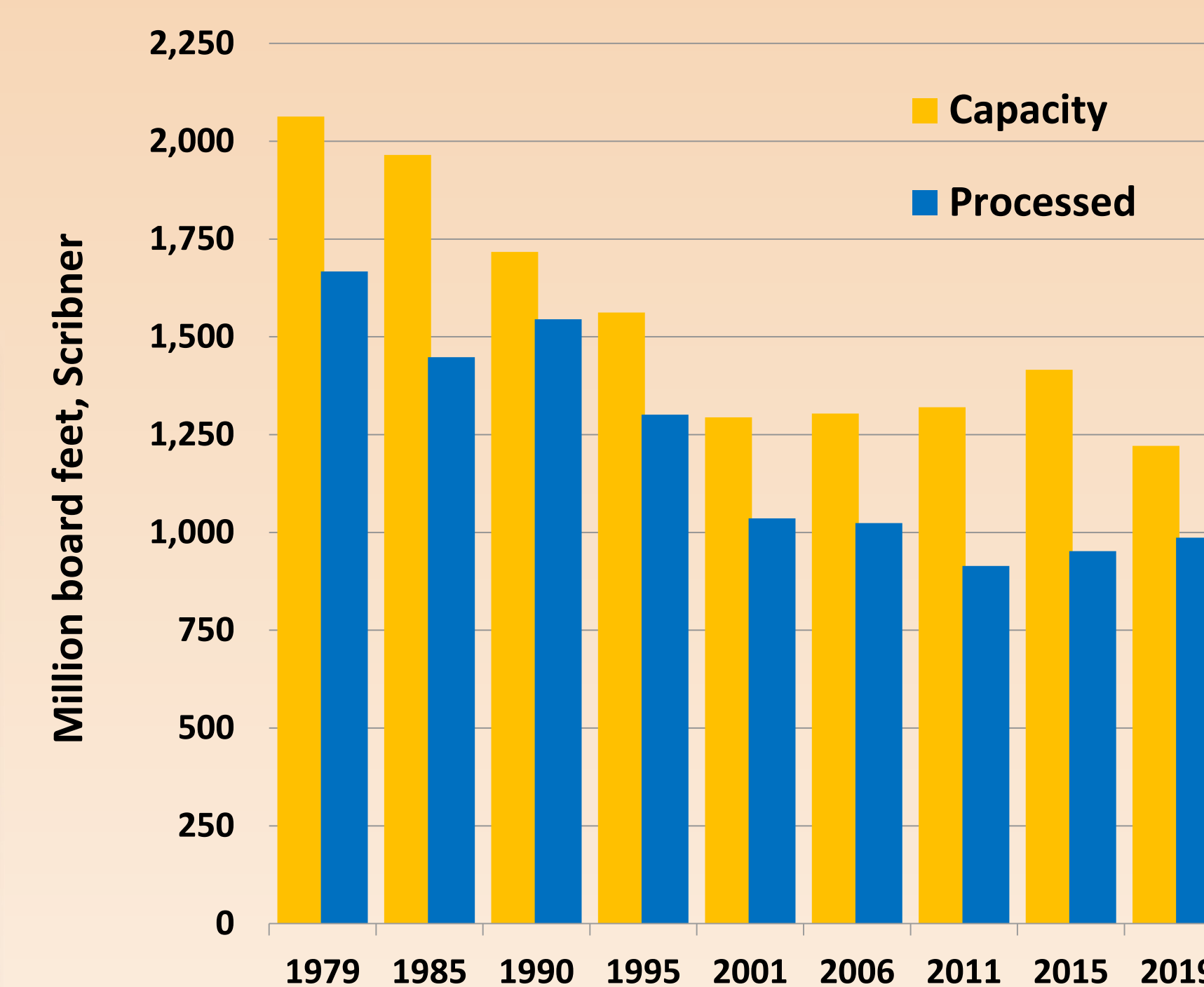
Sawtimber processing capacity is a measure of the volume of sawlogs that could be processed if facilities were operating at full production capacities.

- In Idaho during 2019 sawtimber processing capacity was 1,221 MMBF, capacity utilization was 81 percent.
- Sawmills accounted for 80 percent of the capacity and 84 percent was utilized in 2019.

Idaho lumber recovery and overrun select years



Idaho sawtimber processing capacity and sawtimber processed, select years



A total of 73 primary wood products facilities were identified as active in Idaho during 2019.

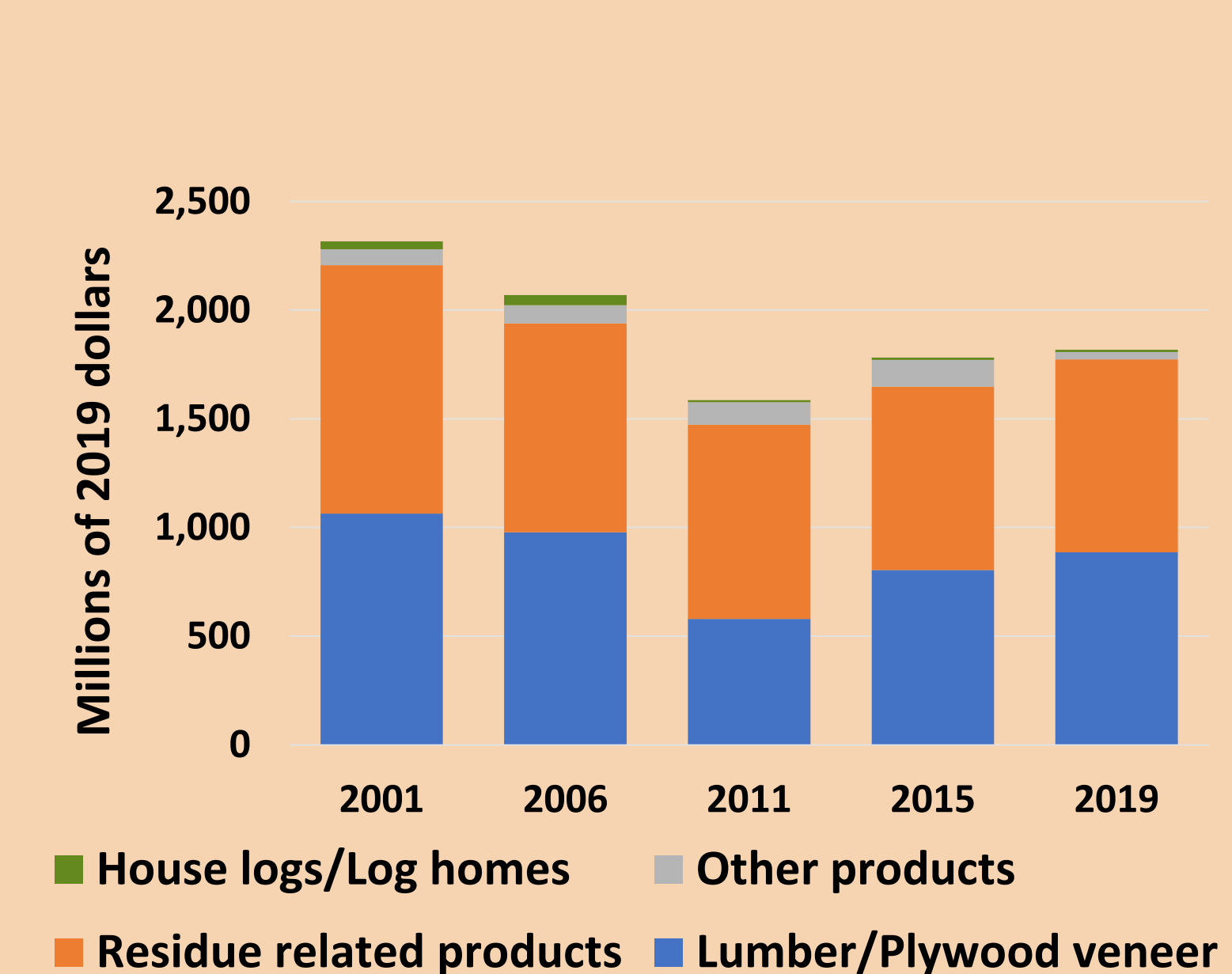
- 24 Sawmills
- 16 Residue related products facilities
- 14 Log home facilities
- 13 Post, pole, and log furniture producers
- 5 Cedar product manufacturers
- 1 Plywood / veneer plant

Sales and economic contributions

Over time, the proportion of total sales for lumber and residue related products have been nearly equal except during and immediately after the Great Recession.

- Sales values in Idaho during 2019 were \$1.8 billion.
- House logs and log home sales were severely impacted by the Great Recession but have been improving since 2011.

Sales value of Idaho's primary wood products



Forest industry employment in Idaho stimulates additional economic activity and opportunities through employment and wages spent throughout the state economy.

- In 2019 16,741 people were employed in Idaho directly and through indirect and induced activities from primary wood products manufacturing.
- Direct, indirect, and induced economic contributions from primary wood products manufacturing labor income in 2019 was \$1.36 billion.

Economic contribution of Idaho's forest industry employment (number of workers) by sector in 2019



Darker bars = direct effects
Lighter bars = indirect and induced effects
Sources: USDC BEA 2019; USDC CB 2019; USDL BLS 2019; USDC BEA 2019; BBER 2019.



Funding provided by:
USDA, Forest Service,
Interior West Forest Inventory and Analysis (FIA)
Program,
Ogden, Utah.

Contact Us:
Bureau of Business and Economic Research
www.bber.umt.edu
eric.simmons@mso.umt.edu
Samuel.Scott@mso.umt.edu