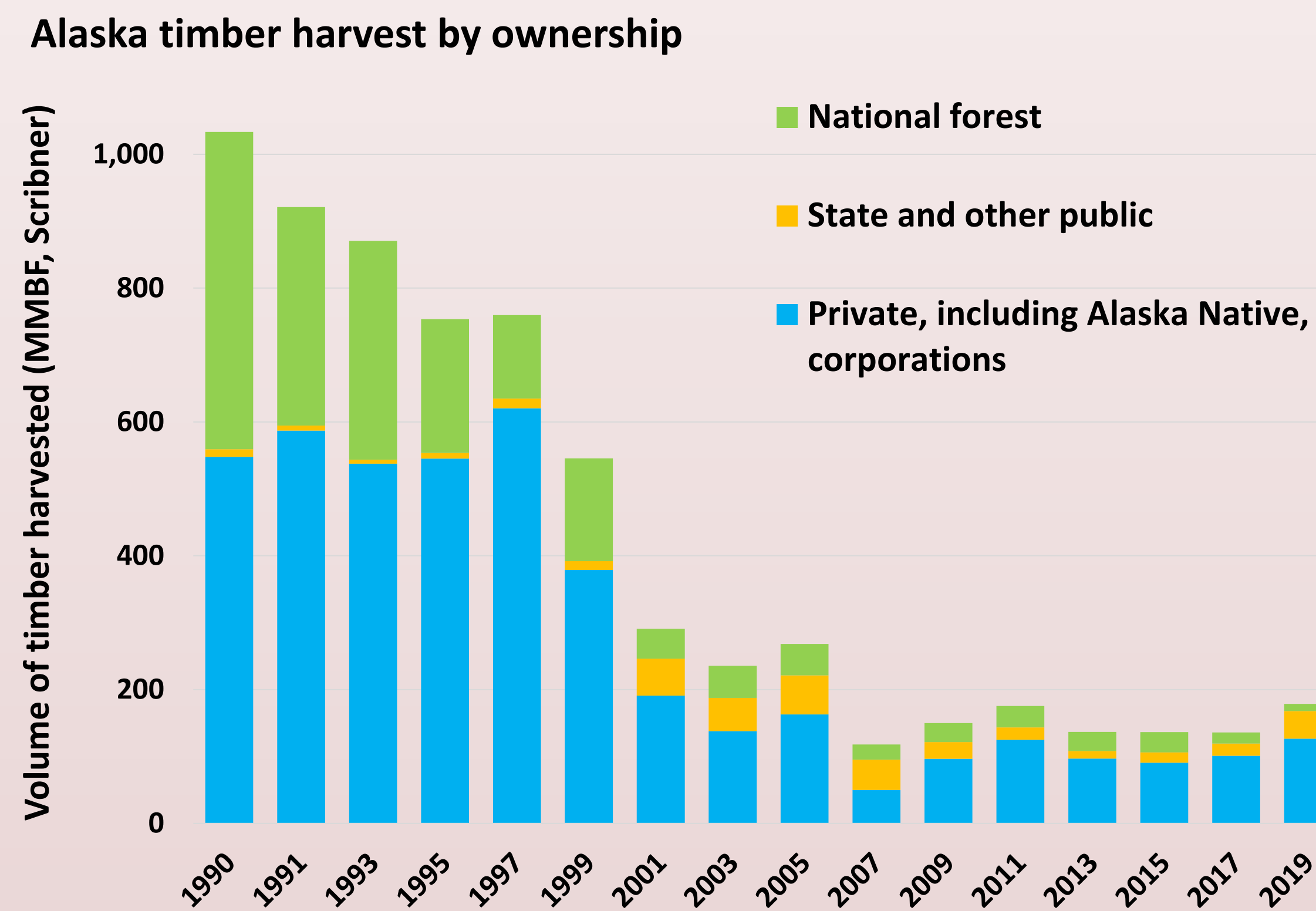


# Timber Products of the Far North: Alaska's Timber Harvest and Forest Products Industry, 2019

Thale Dillon, Erik C. Berg, Eric A. Simmons and Glenn Christensen

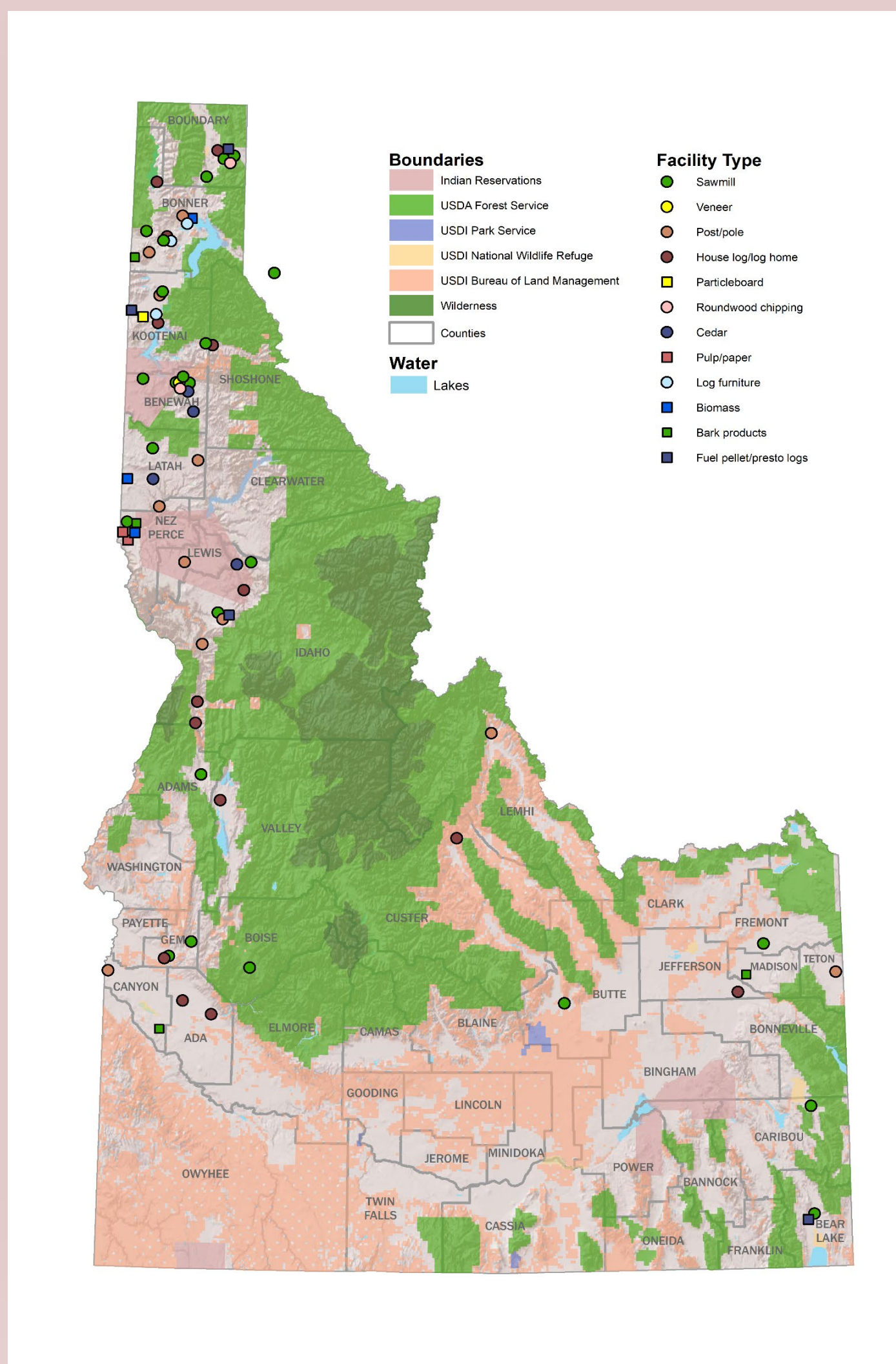
## Timber harvest facts



Timber harvests from Federal and private timberlands in Alaska declined dramatically after 1999. Alaska's total timber harvest in 2019 was 178.6 million board feet (MMBF) Scribner.

Lumber overrun and recovery factors demonstrate the efficiency of sawmills to use the timber resource. More product output per unit of volume input = less residuals.

## Industry facts



In 2019 Idaho sawmills recovered an average of 1.90 board feet lumber tally per board foot Scribner of input.

Idaho's 24 active sawmills produced 1.8 billion board feet of lumber during 2019.

Sawtimber processing capacity is a measure of the volume of sawlogs that could be processed if facilities were operating at full production capacities. Unused capacity is a good indicator of if timber harvests increased there may be a market for the logs.

In Idaho during 2019 sawtimber processing capacity was 1,221 MMBF, capacity utilization was 81 percent.

Sawmills accounted for 80 percent of the capacity and 84 percent was utilized in 2019.

A total of 73 primary wood products facilities were identified as active in Idaho during 2019.

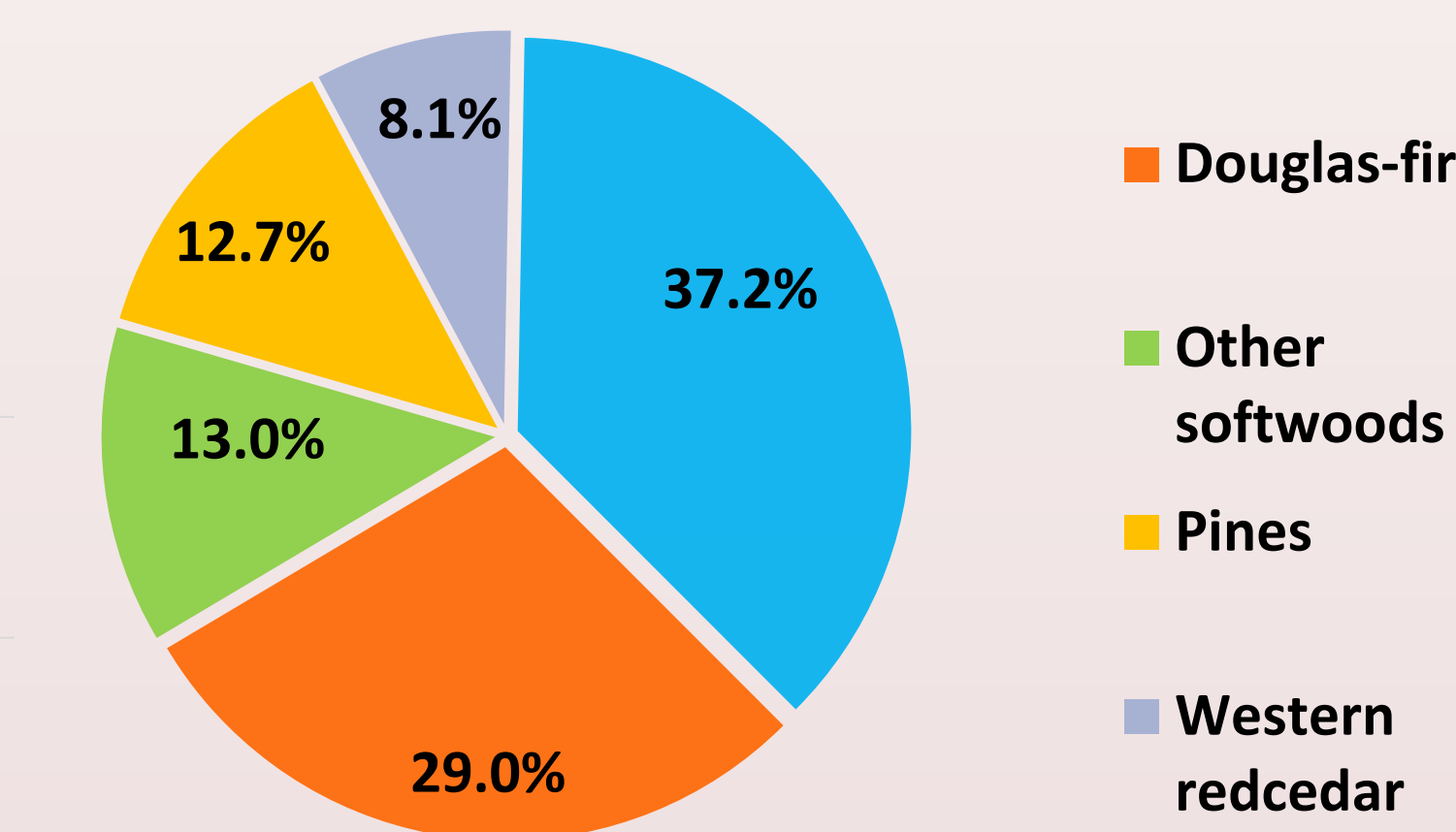
- 24 Sawmills
- 16 Residue related products facilities
- 14 Log home facilities
- 13 Post, pole, and log furniture producers
- 5 Cedar product manufacturers
- 1 Plywood / veneer plant



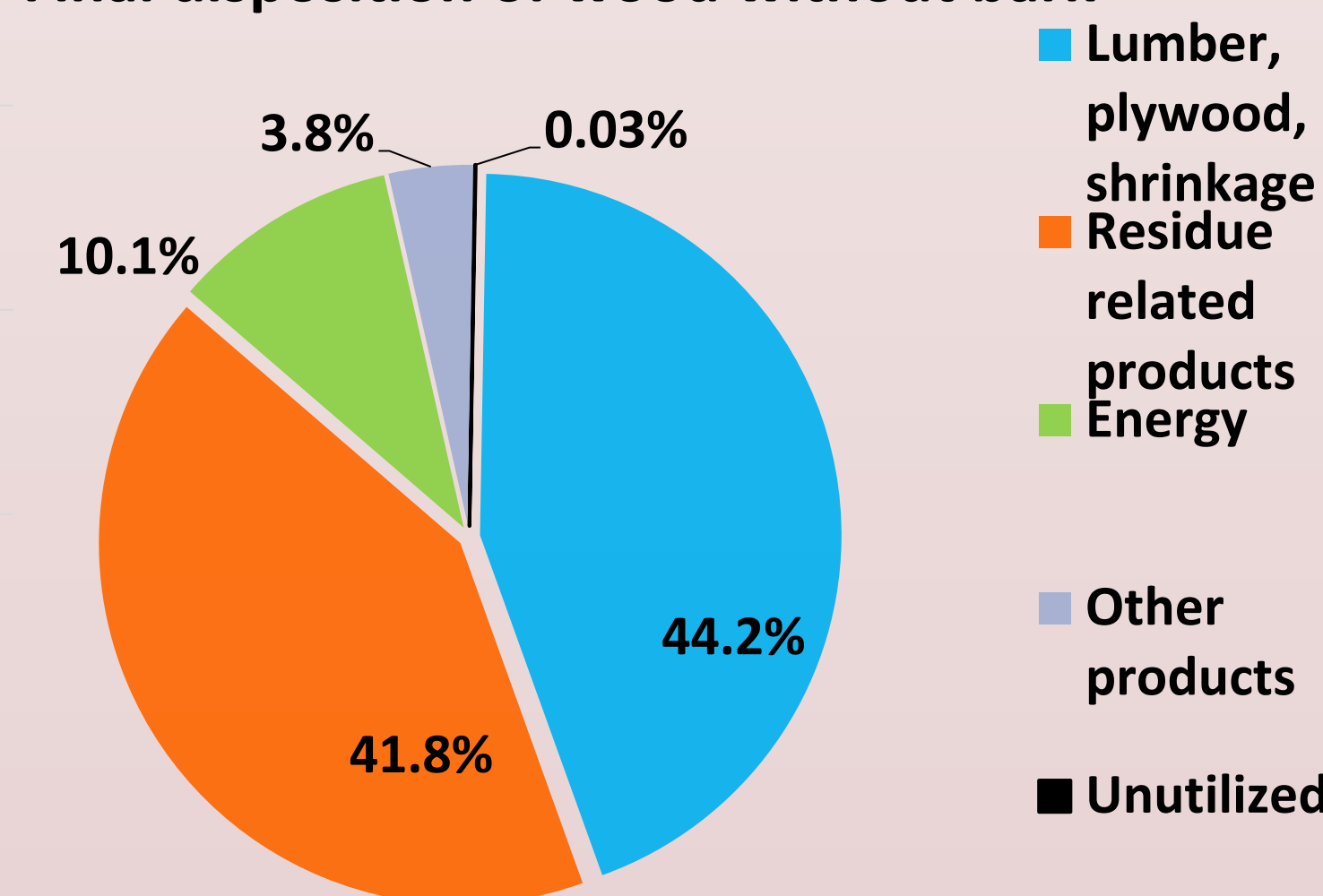
Funding provided by: USDA, Forest Service, Interior West Forest Inventory and Analysis (FIA) Program, Ogden, Utah.



## Harvest by species



## Final disposition of wood without bark



Residue related products include pulp, paper, board products, landscape, mulch and animal bedding. Energy uses include residuals burned on site, hog fuel, wood pellets and energy logs. Other products include posts, poles, cedar products, house logs/log homes and log furniture.



- True firs, Douglas-fir, western redcedar and ponderosa pine accounted for 81 percent of Idaho's 2019 timber harvest.
- Saw and veneer logs accounted for 91 percent of the timber products in the 2019 harvest.
- More than 94 percent of the state's timber harvest was processed in-state.
- Nearly 83 percent of the wood fiber from the timber harvest was delivered as logs to sawmills in Idaho.
- Lumber products including shrinkage allowance accounted for 44 percent of the wood fiber from harvested trees.
- Residue products facilities received just 13 percent of the wood fiber delivered as logs but combined with mill residuals, finished products accounted for nearly 42 percent of the wood fiber from the 2019 timber harvest.
- Less than 0.05 percent of the wood fiber from the harvest went unused in 2019.

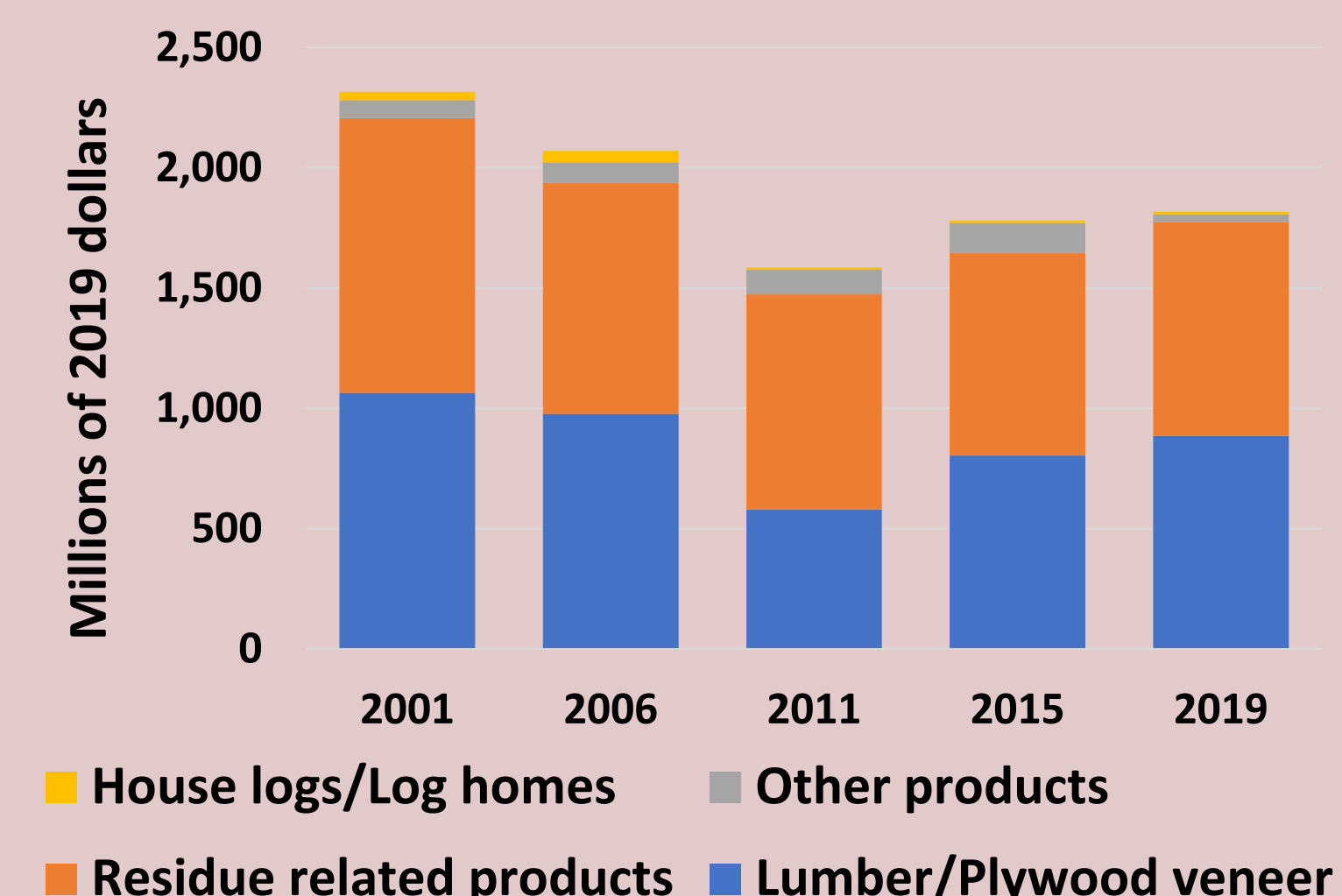
## Sales values and economic contributions

Over time the proportion of total sales for lumber and residue related products have been nearly equal except during and immediately after the Great Recession.

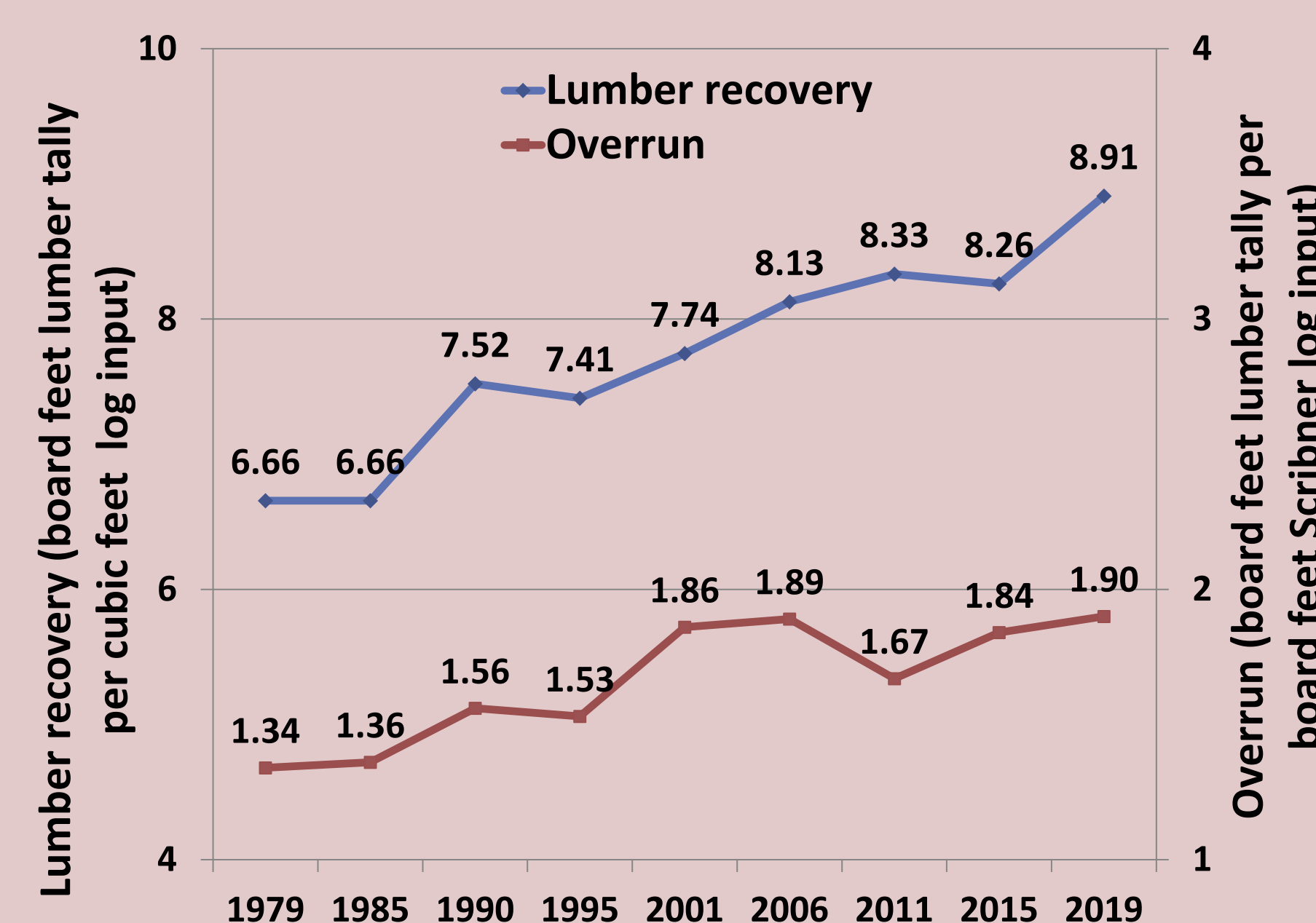
Sales values in Idaho during 2019 were \$1.8 billion. Lumber and Residue related products were the same proportion of total sales (48 percent for each sector).

House logs and log home sales were severely impacted by the Great Recession but have been improving since 2011 (from \$47 million in 2006 to \$10 million in 2019).

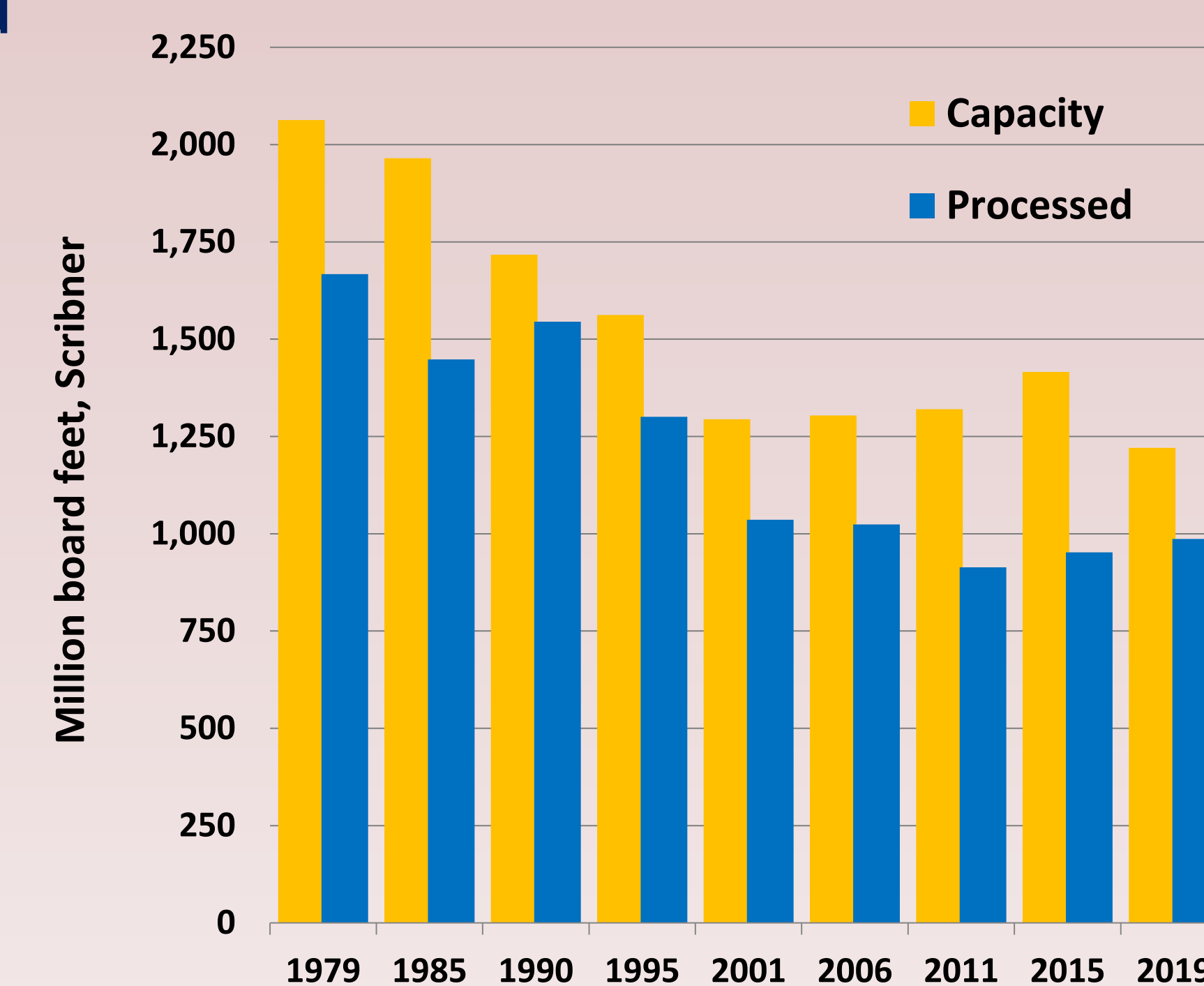
### Sales value of Idaho's primary wood products



### Idaho lumber recovery and overrun select years



### Idaho sawtimber processing capacity and sawtimber processed, select years



Forest industry employment in Idaho stimulates additional economic activity and opportunities through employment and wages spent throughout the state economy.

In 2019 16,741 people were employed in Idaho directly and through indirect and induced activities from primary wood products manufacturing.

Direct, indirect, and induced economic contributions from primary wood products manufacturing labor income in 2019 was \$1.36 billion.

### Economic contribution of Idaho's forest industry employment (number of workers) by sector in 2019



Darker bars = direct effects Lighter bars = indirect and induced effects  
Sources: USDC BEA 2019; USDC CB 2019; USDL BLS 2019; USDC BEA 2019; BBER 2019.

### Contact Us:

Bureau of Business and Economic Research  
www.bber.umt.edu  
eric.simmons@mso.umt.edu  
Samuel.Scott@mso.umt.edu

